

LONE PEAK CENTER 8



147 WEST ELECTION ROAD | SALT LAKE CITY, UTAH

BUILDING FEATURES

- 50,176 RSF
- 11,318 RSF immediately available
- Locker room and showers

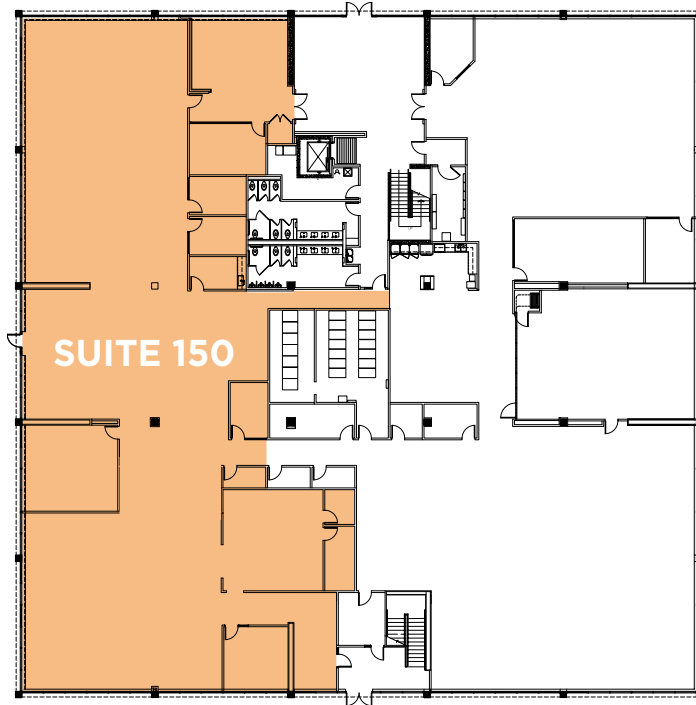


MAIER SIEBEL BABER



LONE PEAK CENTER 8

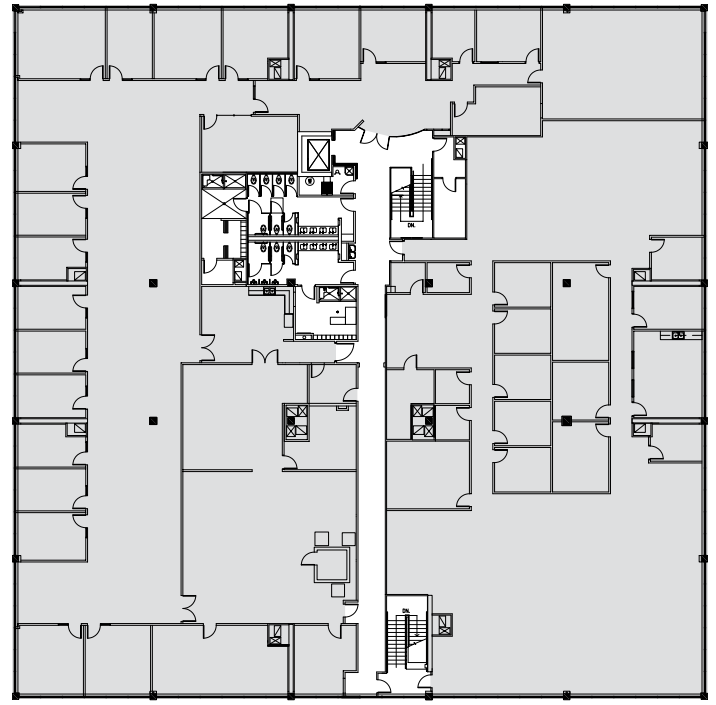
FIRST FLOOR



SUITE 150: 11,318 RSF



SECOND FLOOR



FULLY LEASED



FOR LEASING INFORMATION, PLEASE CONTACT:

DANA BAIRD, CCIM
Executive Managing Director
(801) 303 5526
dana.baird@cushwake.com

MIKE RICHMOND
Executive Managing Director
(801) 303 5434
mike.richmond@cushwake.com

 **CUSHMAN &
WAKEFIELD**
MAIER SIEBEL BABER