



## OFFICE SPACE AVAILABLE FOR LEASE

2450 Maitland Center Pkwy, Maitland, FL 32751

Second Floor Office Space in  
the Heart of Maitland Center

### PROPERTY HIGHLIGHTS

- Three-story, 41,274 SF building in the heart of Maitland Center
- Monument signage available
- Easy access to SR 414, I-4, Lake Destiny, Wymore, Lee Rd, SR 436
- Close proximity to RDV Sportsplex, Sheraton & Sam Snead's



#### ASKING RATE

\$23.50/sf Full Service



#### AVAILABLE SPACE

Suite 205: 2,133 ± SF



#### PARKING

Reserved/covered parking  
available; 4.50/1000 ratio



#### YEAR BUILT

2001; Renovated 2020



**HARBERT**  
REALTY SERVICES

**JOSH SMITH**

jsmith@harbertrealty.com | 407.377.4050

**DAMIEN MADSEN**

dmadsen@harbertrealty.com | 407.256.2844

**For More Information: HarbertRealty.com**  
400 S Park Ave, Suite 225, Winter Park, FL 32789

The information contained herein has been obtained from sources deemed reliable, however, HRS makes no guarantees, warranties or representation as to its completeness or accuracy thereof. The presentation of this property is submitted subject to errors, omissions, change of price or conditions, prior to sale or lease or withdrawal without notice.



# OFFICE SPACE AVAILABLE FOR LEASE

2450 Maitland Center Pkwy, Maitland, FL 32751

Building & Lobby



JOSH SMITH  
jsmith@harbertrealty.com | 407.377.4050

DAMIEN MADSEN  
dmadsen@harbertrealty.com | 407.256.2844

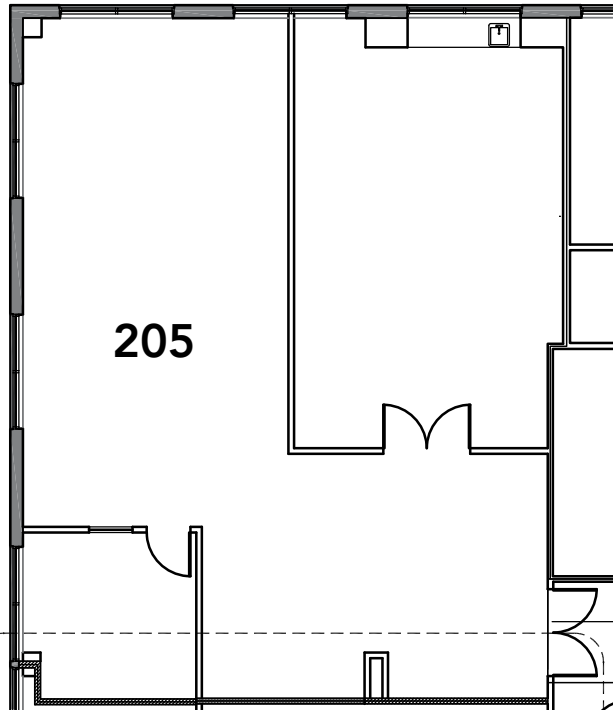
*For More Information: HarbertRealty.com*  
400 S Park Ave, Suite 225  
Winter Park, FL 32789

# OFFICE SPACE AVAILABLE FOR LEASE

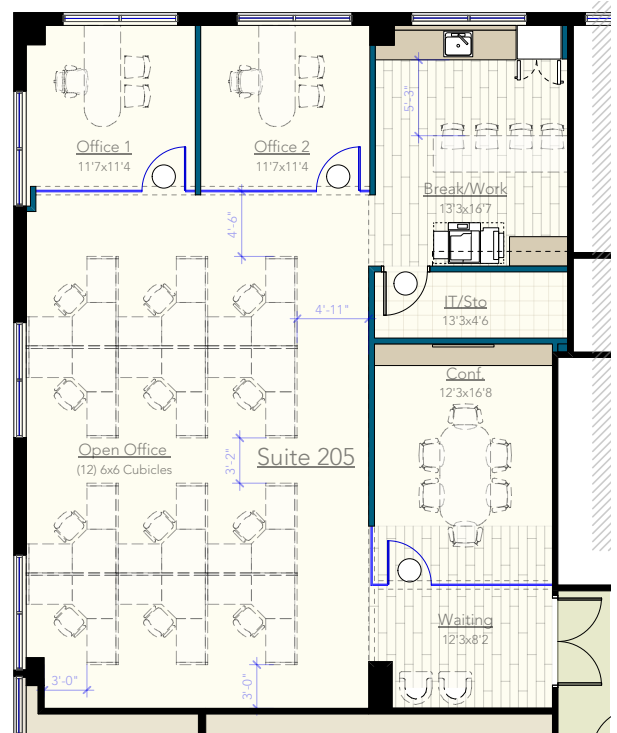
2450 Maitland Center Pkwy, Maitland, FL 32751

Suite 205

**SUITE 205: 2,133 ± SF**



**SUITE 205 - 2,133 RSF**



**TEST FIT - POSSIBLE LAYOUT : SUITE 205 - 2,133 RSF**



**JOSH SMITH**  
jsmith@harbertrealty.com | 407.377.4050

**DAMIEN MADSEN**  
dmadsen@harbertrealty.com | 407.256.2844

**For More Information: HarbertRealty.com**  
400 S Park Ave, Suite 225  
Winter Park, FL 32789