



80 M Street Southeast



Space availability summary

WeWork @ 80 M Street Southeast
Washington, DC

wework

[VIEW VIRTUAL TOUR](#)

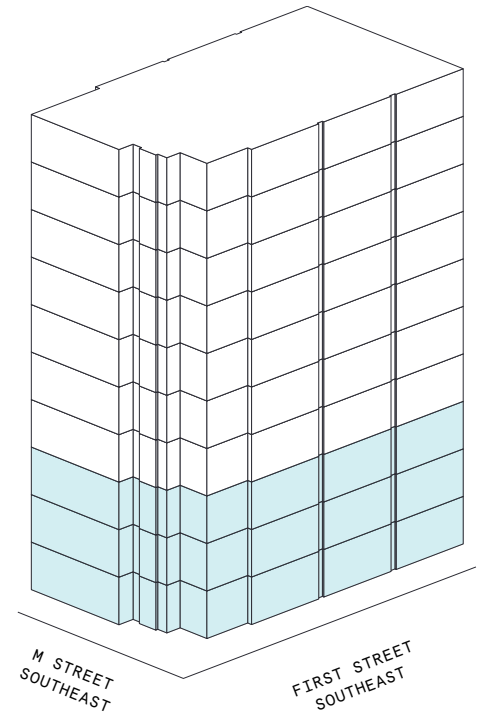
3rd Floor 18,708 RSF

2nd Floor 41,348 RSF

1st Floor 8,614 RSF

68,670 RSF

TOTAL WEWORK RSF



80 M Street Southeast

At a glance

Workspaces designed for productivity
and creativity with flexible size & term

Private suites available
from 55 to 4,648 RSF

Move-in ready suites
furnished & wired

10

TOTAL BUILDING FLOORS

285,123

TOTAL BUILDING SQ FT

All dimensions are approximate and subject to variances. It is your obligation to independently verify the particulars of the property. WeWork reserves the right to make changes.



Workspaces and lounges feature a mix of natural materials, rich woods, and mid-century-inspired furnishings.



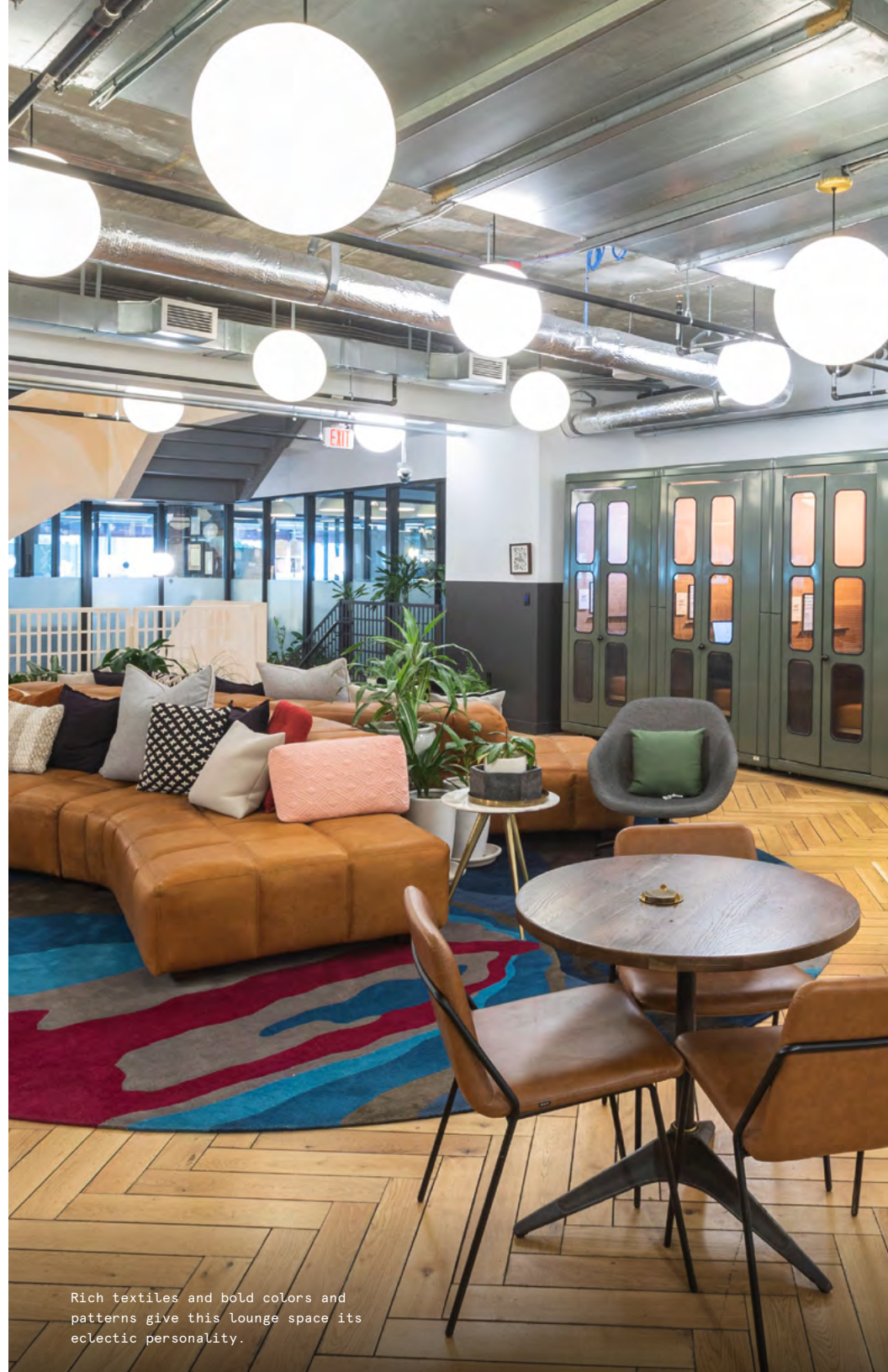
A geometric table, custom wood paneling, and slate-gray accents add drama to this meeting space.

A modern workspace in DC's Navy Yard

80 Main Street Southeast is centrally located in DC's Navy Yard district. This 10-story, Class-A building is LEED Gold certified and features expansive glass windows, an exposed brick lobby, and an outdoor terrace. WeWork's three floors in 80 Main Street Southeast, features a mix of private offices, meeting rooms, lounges, and thoughtfully designed workspaces.



Oversized windows flood the space with natural light and provide panoramic views of the surrounding neighborhood.



Rich textiles and bold colors and patterns give this lounge space its eclectic personality.

Polished design with unexpected flair

Inspired by classic Scandinavian design, 80 M Street Southeast features a neutral palette and natural materials accented with bold colors and patterns. Custom millwork, tiling, and oak wood provide a polished backdrop for the space's mid-century-inspired furniture and eclectic décor.

- A dynamic central staircase in neutral tones carries through all three floors
- Natural materials and wood tones soften the space's industrial elements, including concrete columns, exposed ceilings and ductwork, and metal accents
- Bright accent colors, patterned textiles, and custom artwork and neons give the space an elevated eclectic feel



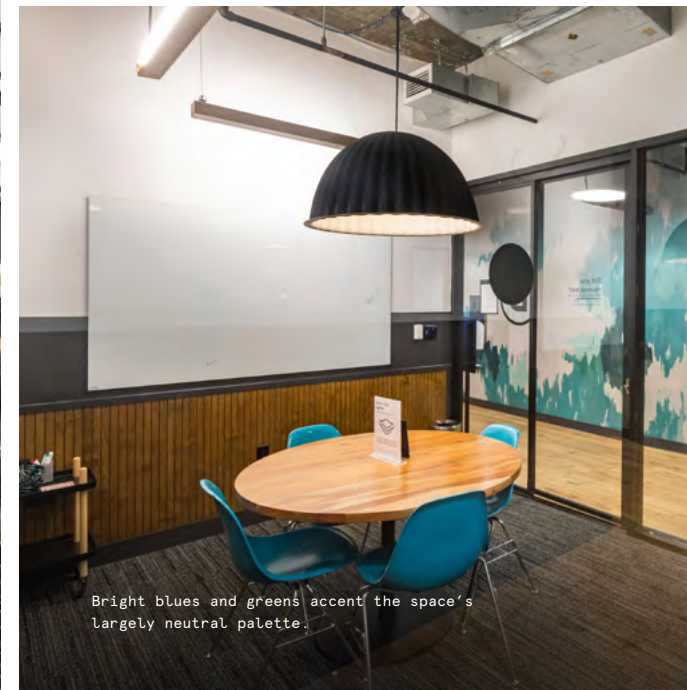
Modern pendant lighting carries the space's elevated design into the fitness center.



Custom artwork, murals, and greenery can be found throughout the space.



Neon installations add youth and playfulness to this polished workspace.



Bright blues and greens accent the space's largely neutral palette.



On-site amenities

- 24/7 security
- Electronic keycard access
- Business-class printers
- Professional events and programming
- Stocked pantry
- US mail drop
- On-site staff
- Meeting rooms
- Phone booths
- Wellness/meditation room
- Mother's room
- Event space
- Classroom space
- Fitness center
- Recreational games
- Locker room with showers
- Outdoor space
- Dog-friendly spaces
- Bicycle storage
- On-site parking
- Access to car charging stations
- Food hall

Building specifications



Hours of operation

Monday – Friday: 8am–5pm



Security

24/7 attended lobby



Fire strategy

Fully-sprinklered floors



Building history

Built in 2001

Developed by Davis
Construction



Elevators

6 passenger elevators with a
capacity of 3,500 lbs

1 freight elevator with a
capacity of 3,500 lbs



Building size

10 stories

285,123 SF









HVAC

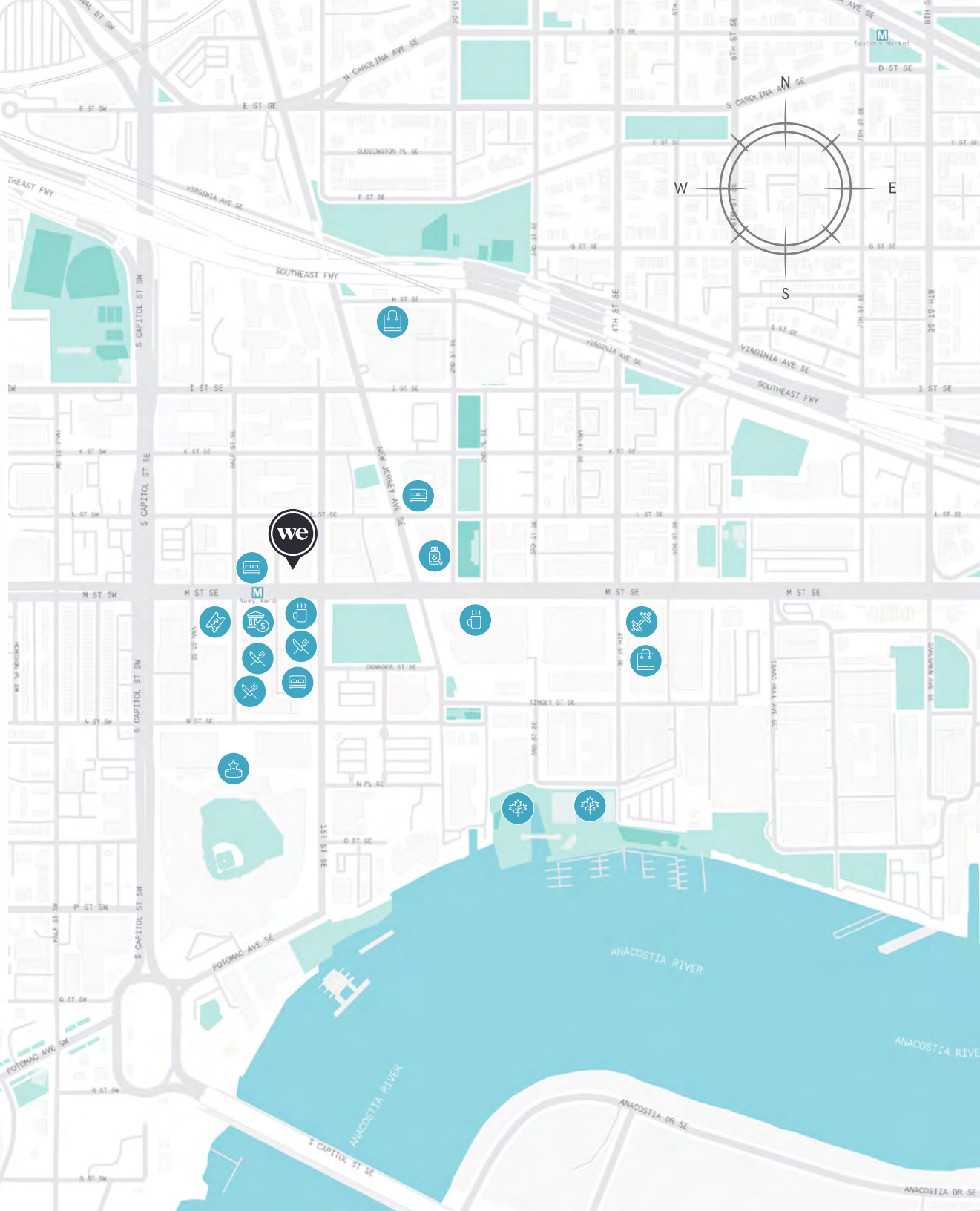
Monday – Friday: 9am–5pm

Experience the heart of Navy Yard

Just south of the Hill, Navy Yard is a bustling hub featuring some of DC's premier bars, restaurants, landmarks, and attractions. Members can catch an after-work game at Nationals Park or Audi Field, enjoy waterfront views at The Wharf, or take lunchtime strolls through Yards Park. Local favorite eateries like Swizzler, &Pizza, and Kilwins offer plenty of dining options, while on-site parking and quick access to the Green, Blue, Orange, and Silver lines make for an easy commute.

Distance to WeWork

On-site Parking	 Walk	1 min
Capital Bikeshare	 Walk	1 min
Navy Yard Metro Station	 Walk	5 min
DC Metro Bus Stop	 Walk	5 min
Potomac Water Taxi	 Drive	7 min
WhereI Park Parking	 Walk	10 min



1st Floor

8,614 RSF






4

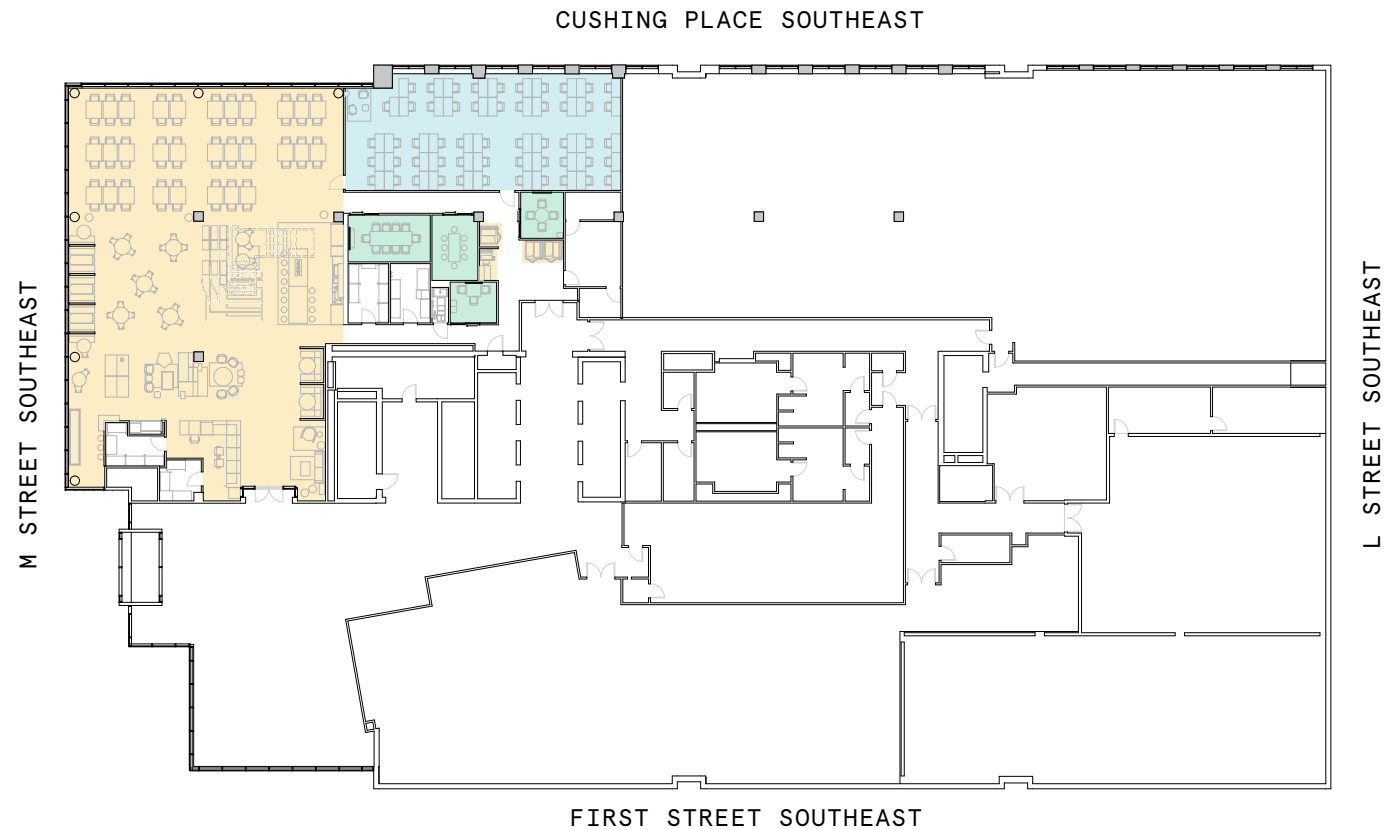
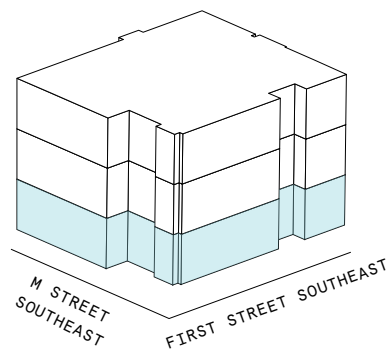
MEETING ROOM(S)

4

SHARED WORKSPACE(S)

LEGEND

-  MEETING ROOM
-  SHARED WORKSPACE
-  DEDICATED SPACE



2nd Floor

41,348 RSF






16

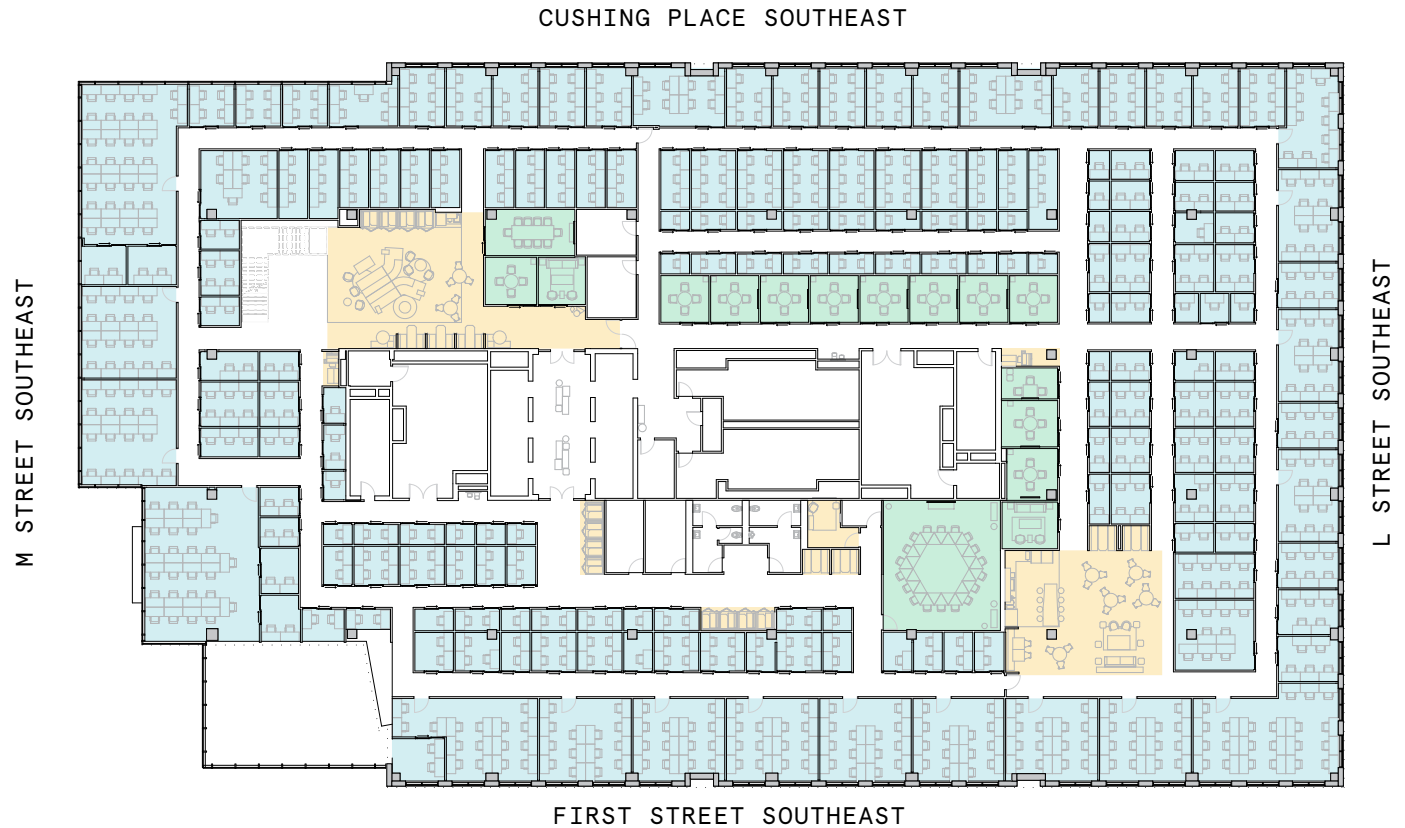
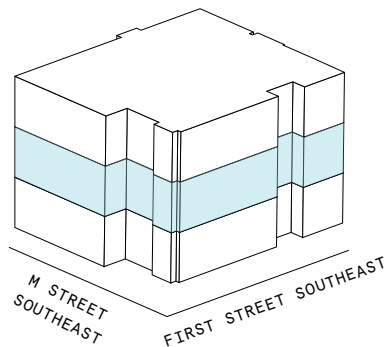
MEETING ROOM(S)

9

SHARED WORKSPACE(S)

LEGEND

-  MEETING ROOM
-  SHARED WORKSPACE
-  DEDICATED SPACE

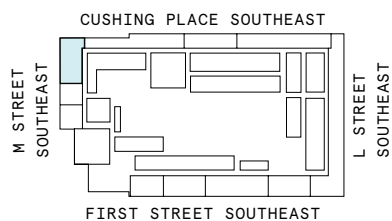
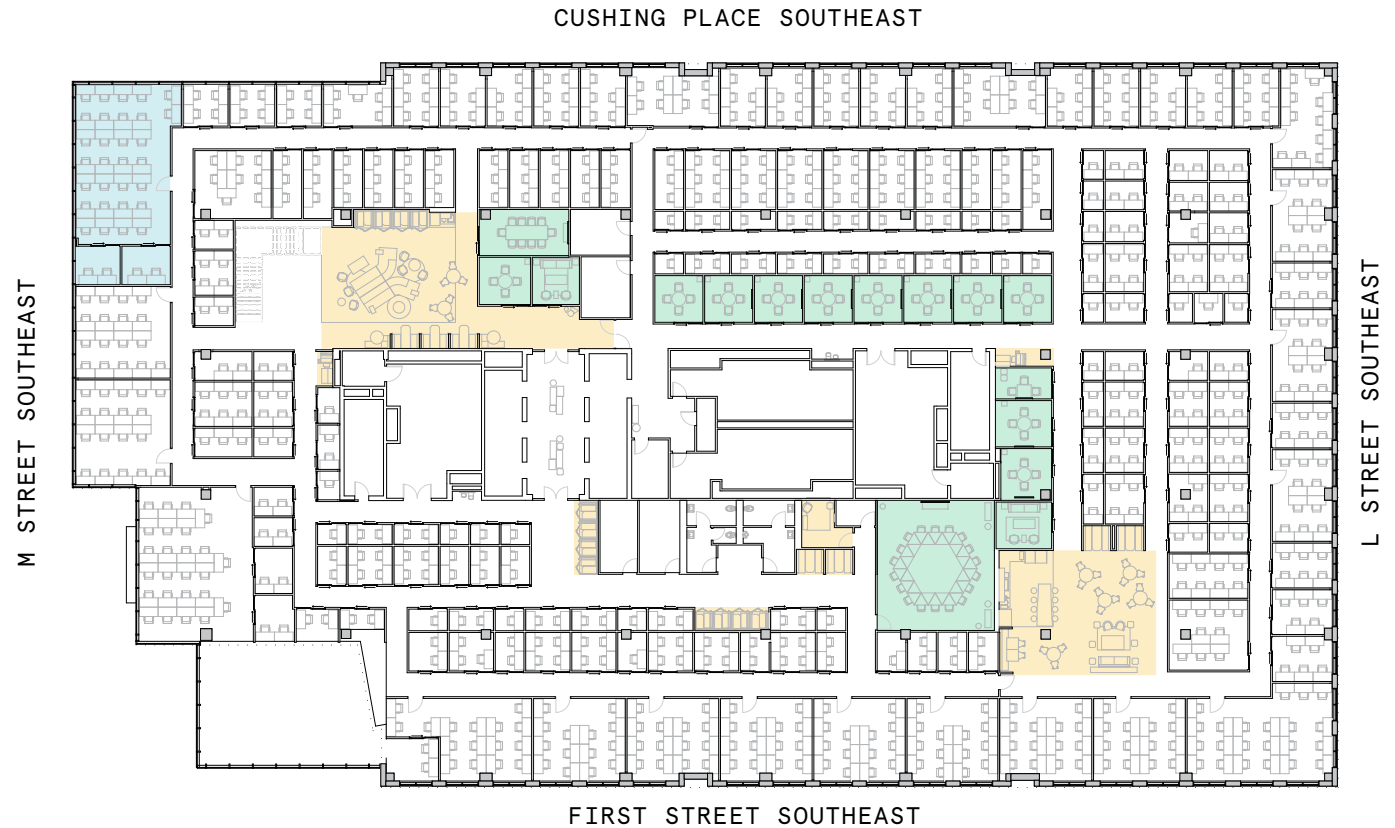


2nd Floor

41,348 RSF

1,966 RSF Suite 02-101

2
PRIVATE OFFICE(S)



Suite 02-101

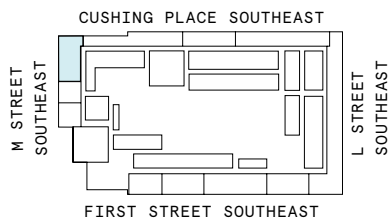
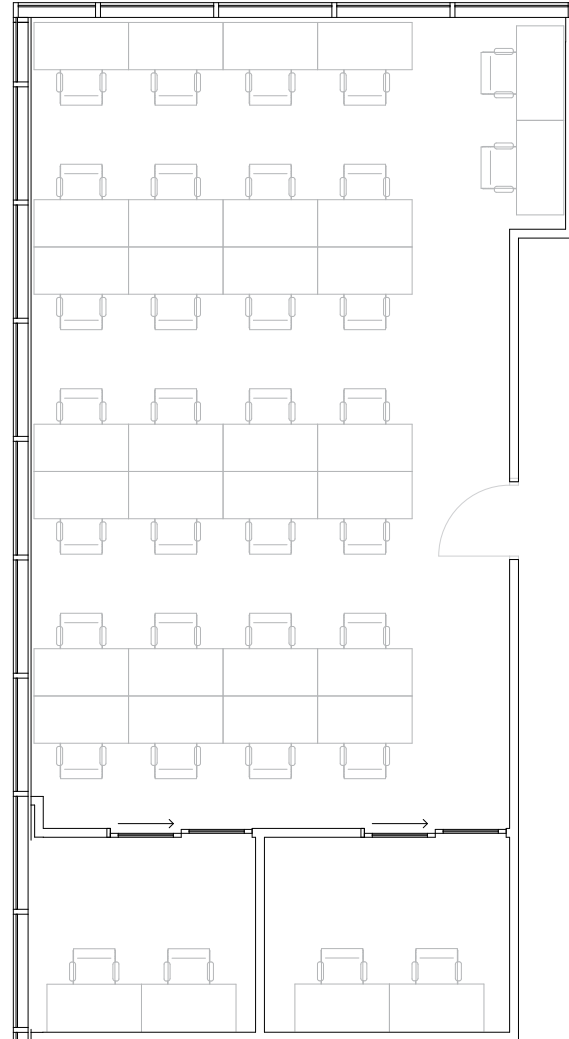
2nd Floor

2

PRIVATE OFFICE(S)

1,966 RSF

RENTABLE AREA

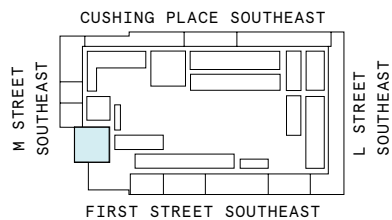
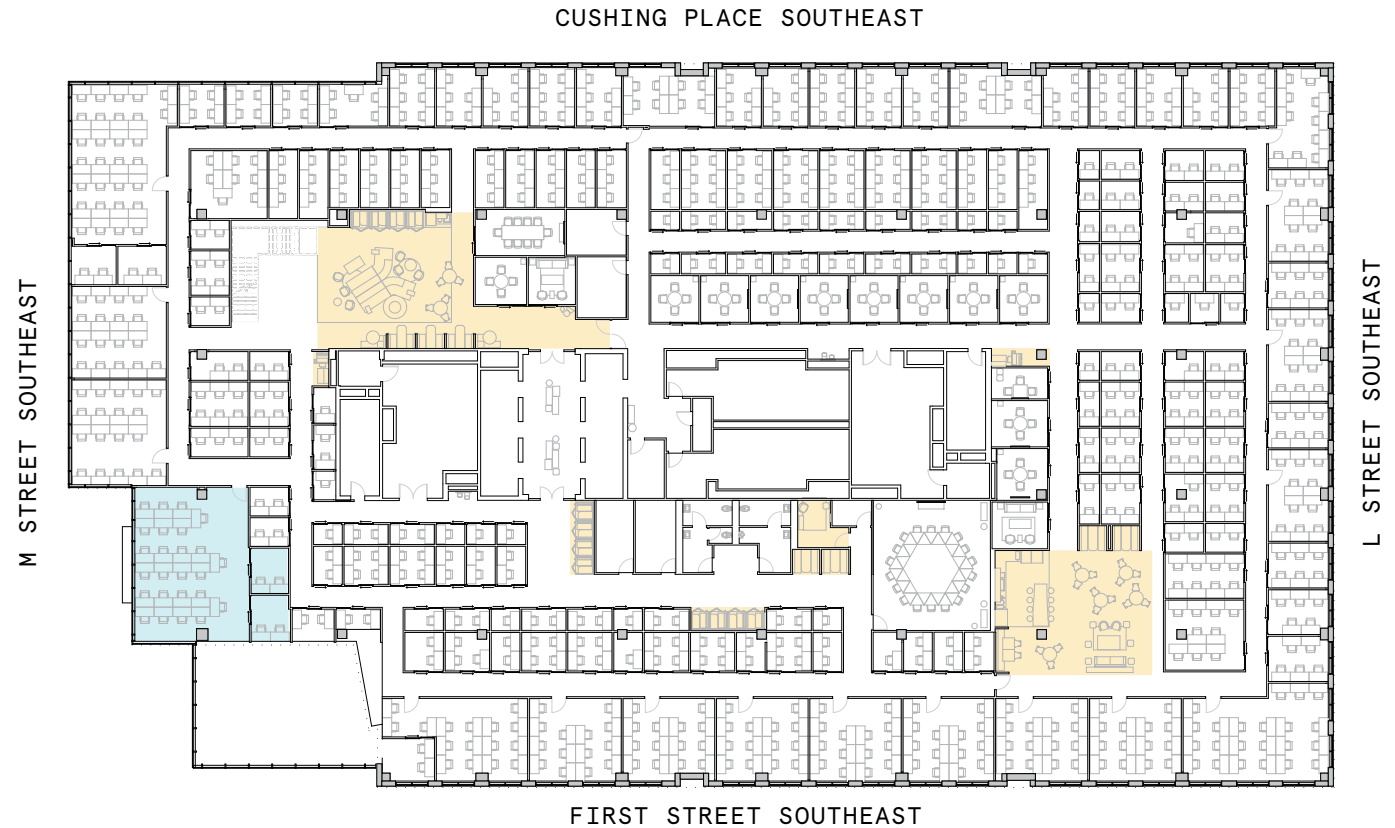


2nd Floor

41,348 RSF

2,875 RSF Suite 02-267

2
PRIVATE OFFICE(S)

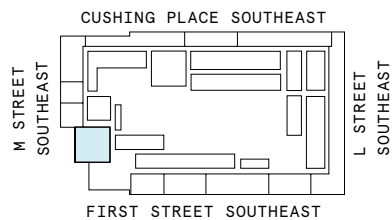
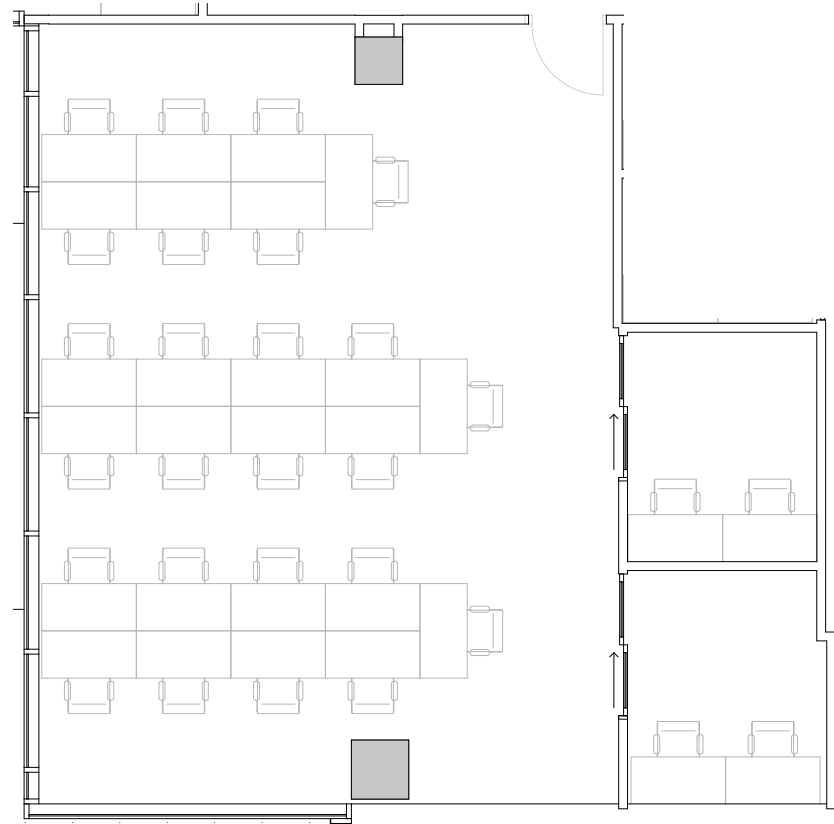


Suite 02-267

2nd Floor

2
PRIVATE OFFICE(S)

2,875 RSF
RENTABLE AREA



3rd Floor

18,708 RSF






5

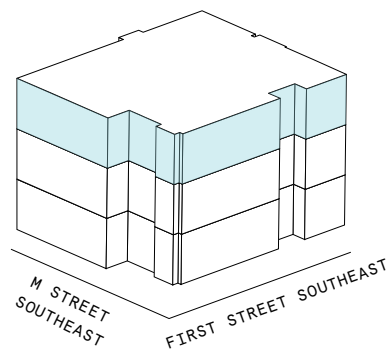
MEETING ROOM(S)

7

SHARED WORKSPACE(S)

LEGEND

-  MEETING ROOM
-  SHARED WORKSPACE
-  DEDICATED SPACE

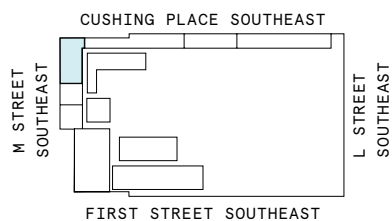


3rd Floor

18,708 RSF

2,326 RSF Suite 03-101

3
PRIVATE OFFICE(S)

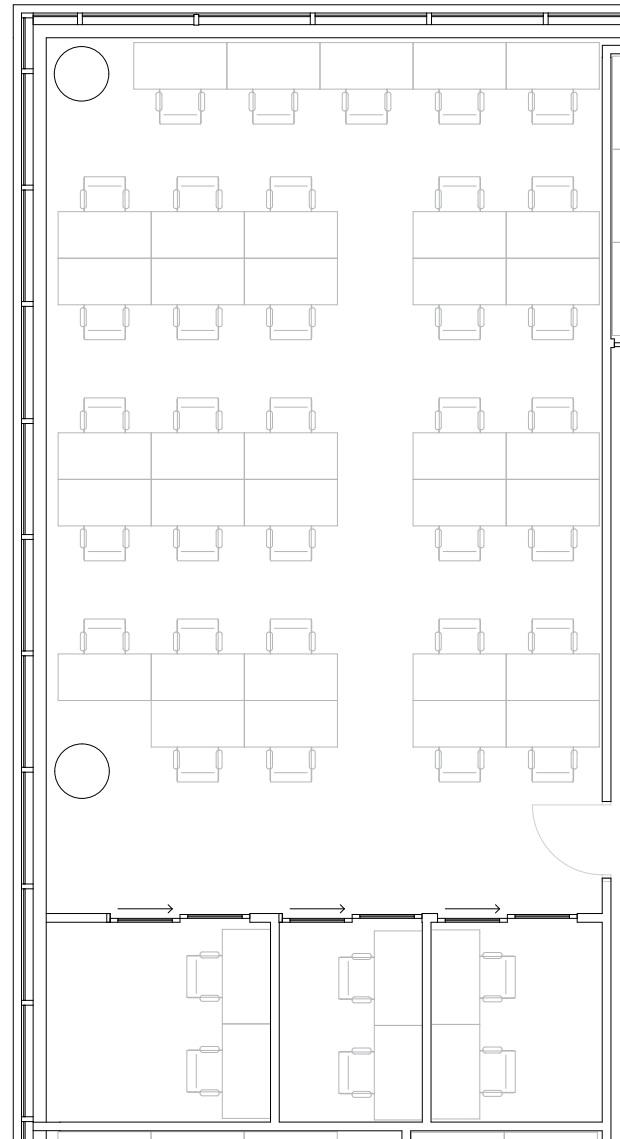
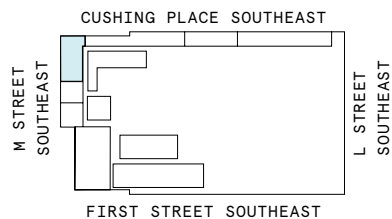


Suite 03-101

3rd Floor

3
PRIVATE OFFICE(S)

2,326 RSF
RENTABLE AREA

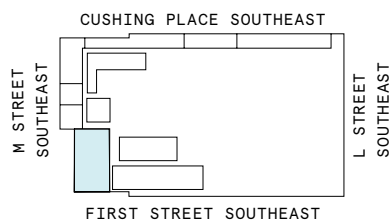
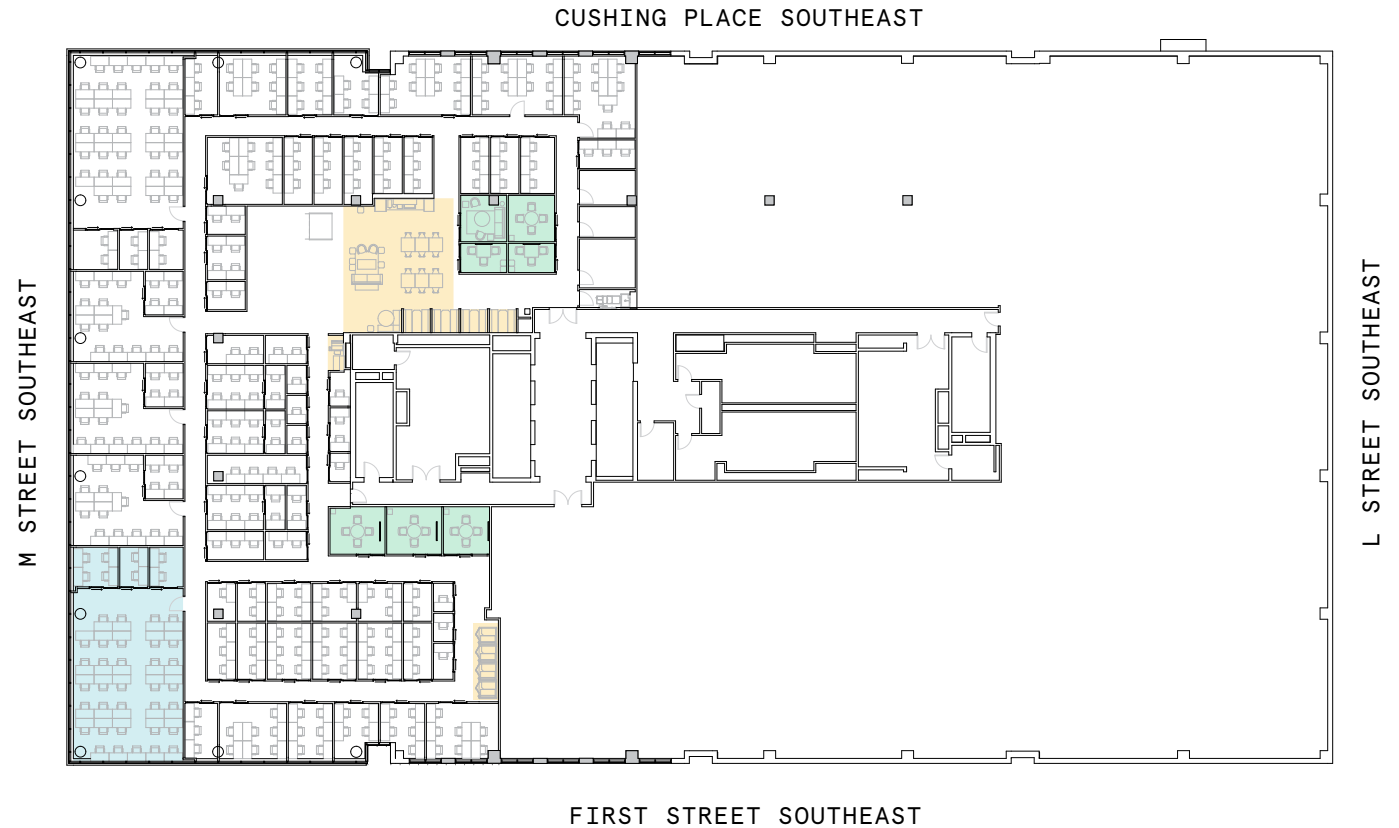


3rd Floor

18,708 RSF

2,326 RSF Suite 03-131

3
PRIVATE OFFICE(S)



Suite 03-131

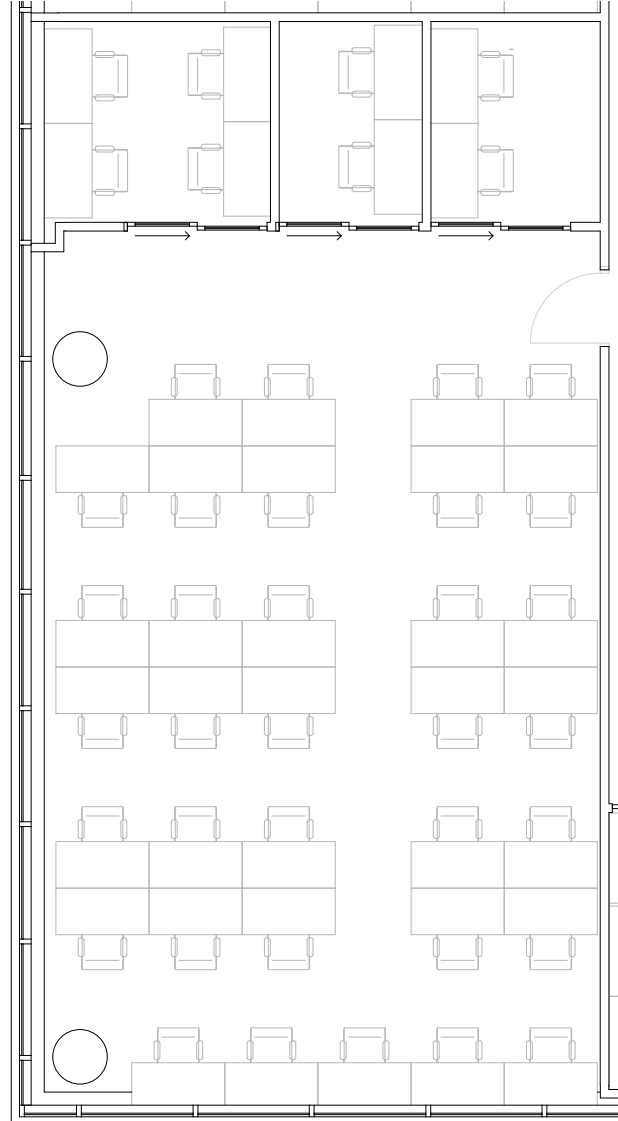
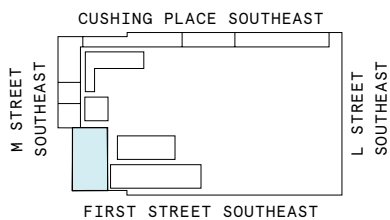
3rd Floor

3

PRIVATE OFFICE(S)

2,326 RSF

RENTABLE AREA



Contact

For leasing inquiries please
reach out to our team.



Evan Tyroler

PORTFOLIO DIRECTOR
EVAN.TYROLER@WEWORK.COM
954.461.3846

Dave Belford

SENIOR LEASING DIRECTOR
DAVE.BELFORD@WEWORK.COM
240.601.2991

Gillin Smith

SENIOR LEASING MANAGER
GILLIN.SMITH@WEWORK.COM