



FREESTANDING RESTAURANT WITH FF&E - CENTRAL REDDING NEAR I-5

1987 HILLTOP DR, REDDING, CA 96002

Jess Whitlow, CCIM
Broker Associate/Consultant
530.605.5169
jess@coxrec.com
coxrec.com

PROPERTY SUMMARY

1987 HILLTOP DR, REDDING, CA 96002



OFFERING SUMMARY

Sale Price:	\$1,725,000
Price/SF:	\$208/SF
Lease Rate:	\$1.75 SF/month (NNN)
Available SF:	8,287 SF
Lot Size:	1.43 Acres
Building Size:	8,287 SF
Year Built:	1988
Zoning:	GC-VR-BH
Parcel Number:	107-310-040

PROPERTY DESCRIPTION

Opportunity to own or lease a freestanding 8,287 SF restaurant in central Redding, CA, ideally located near I-5 and Hwy 44 intersection. This property offers a prominent 45-foot pylon sign for maximum visibility and benefits from high traffic exposure. Formerly home to Marie Callender's and Hilltop Diner, the space includes existing restaurant improvements and FF&E, making it a turnkey option for your next venture. Conveniently situated within one mile of 13 hotels totaling over 1,600 rooms, this location is perfect for capturing both local and traveler traffic.

PROPERTY HIGHLIGHTS

- 45' High Pylon Sign
- 19,602 ADT
- 210 Person Occupancy
- 1250-Gallon Grease Trap
- 2 Hoods - 21' x 4' Hood and 8' x 4' Hood with R-102 Wet Ansul System
- 2 Walk In Coolers - 15' x 10' and 11' x 11'
- Approx. 100 Parking Spaces
- 9' x 9' built-in Commercial Oven
- FF&E Included
- Public restrooms - women's 2 stall, men's 1 stall and urinal
- 2 single stall staff restrooms
- 13 Hotels with 1600+ rooms within 1 Mile
- Owner open to splitting space (potentially 2 suites approx. 3000-5000 SF)
- Redevelop pad into alternative use, split into multiple spaces or develop additional kiosk or other building pad 3600 SF
- Potential for seller financing for qualified buyers

JESS WHITLOW, CCIM
Broker Associate/Consultant

530.605.5169
jess@coxrec.com

coxrec.com
CalDRE #01941996

RETAIL PROPERTY FOR SALE & LEASE

LEASE SPACE

1987 HILLTOP DR, REDDING, CA 96002



LEASE INFORMATION

Lease Type:	NNN	Lease Term:	Negotiable
Total Space:	8,287 SF	Lease Rate:	\$1.75 SF/month

AVAILABLE SPACES

SUITE	TENANT	SIZE (SF)	LEASE TYPE	LEASE RATE	DESCRIPTION
Entire Building	Available	8,287 SF	NNN	\$1.75 SF/month	Fully equipped restaurant build-out in a prime central Redding location near I-5 and Hwy 44 intersections. This former Marie Callender's offers a functional restaurant floor plan with seating for up to 210 guests as currently configured. FF&E is included in the lease, and key features include 2 hoods, 2 walk-in coolers, a large oven, and a 1,250-gallon grease trap. The landlord may consider dividing the space into a smaller footprint for qualified tenants, providing flexibility for a variety of concepts.

JESS WHITLOW, CCIM

Broker Associate/Consultant

530.605.5169

jess@coxrec.com

coxrec.com

CalDRE #01941996

The information above has been obtained from sources believed reliable. While we do not doubt its accuracy, we have not verified it and make no guarantee, warranty or representation about it. It is your responsibility to independently confirm its accuracy and completeness.

FLOOR PLAN

1987 HILLTOP DR, REDDING, CA 96002



JESS WHITLOW, CCIM
Broker Associate/Consultant

530.605.5169
jess@coxrec.com

coxrec.com
CalDRE #01941996

RETAIL PROPERTY FOR SALE & LEASE

EXTERIOR PHOTOS

1987 HILLTOP DR, REDDING, CA 96002



JESS WHITLOW, CCIM
Broker Associate/Consultant

530.605.5169
jess@coxrec.com

coxrec.com
CalDRE #01941996

The information above has been obtained from sources believed reliable. While we do not doubt its accuracy, we have not verified it and make no guarantee, warranty or representation about it. It is your responsibility to independently confirm its accuracy and completeness.

RETAIL PROPERTY FOR SALE & LEASE

EXTERIOR PHOTOS

1987 HILLTOP DR, REDDING, CA 96002



JESS WHITLOW, CCIM
Broker Associate/Consultant

530.605.5169
jess@coxrec.com

coxrec.com
CalDRE #01941996

The information above has been obtained from sources believed reliable. While we do not doubt its accuracy, we have not verified it and make no guarantee, warranty or representation about it. It is your responsibility to independently confirm its accuracy and completeness.

RETAIL PROPERTY FOR SALE & LEASE

DINING AREA

1987 HILLTOP DR, REDDING, CA 96002



JESS WHITLOW, CCIM
Broker Associate/Consultant

530.605.5169
jess@coxrec.com

coxrec.com
CalDRE #01941996

The information above has been obtained from sources believed reliable. While we do not doubt its accuracy, we have not verified it and make no guarantee, warranty or representation about it. It is your responsibility to independently confirm its accuracy and completeness.

RETAIL PROPERTY FOR SALE & LEASE

KITCHEN AREA

1987 HILLTOP DR, REDDING, CA 96002



JESS WHITLOW, CCIM
Broker Associate/Consultant

530.605.5169
jess@coxrec.com

coxrec.com
CalDRE #01941996

The information above has been obtained from sources believed reliable. While we do not doubt its accuracy, we have not verified it and make no guarantee, warranty or representation about it. It is your responsibility to independently confirm its accuracy and completeness.

RETAIL PROPERTY FOR SALE & LEASE

CLOSE UP AERIAL

1987 HILLTOP DR , REDDING, CA 96002



JESS WHITLOW, CCIM
Broker Associate/Consultant

530.605.5169
jess@coxrec.com

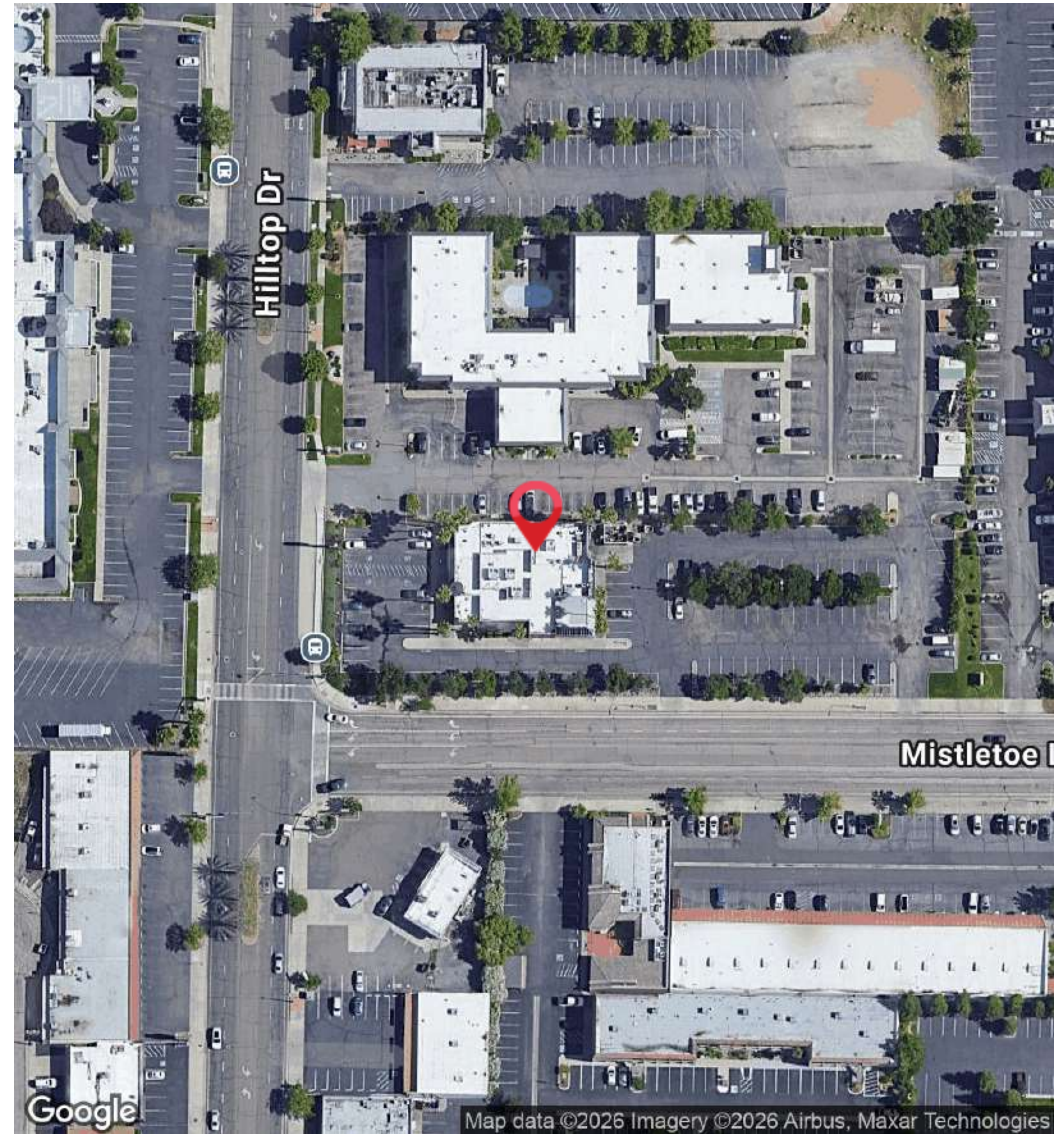
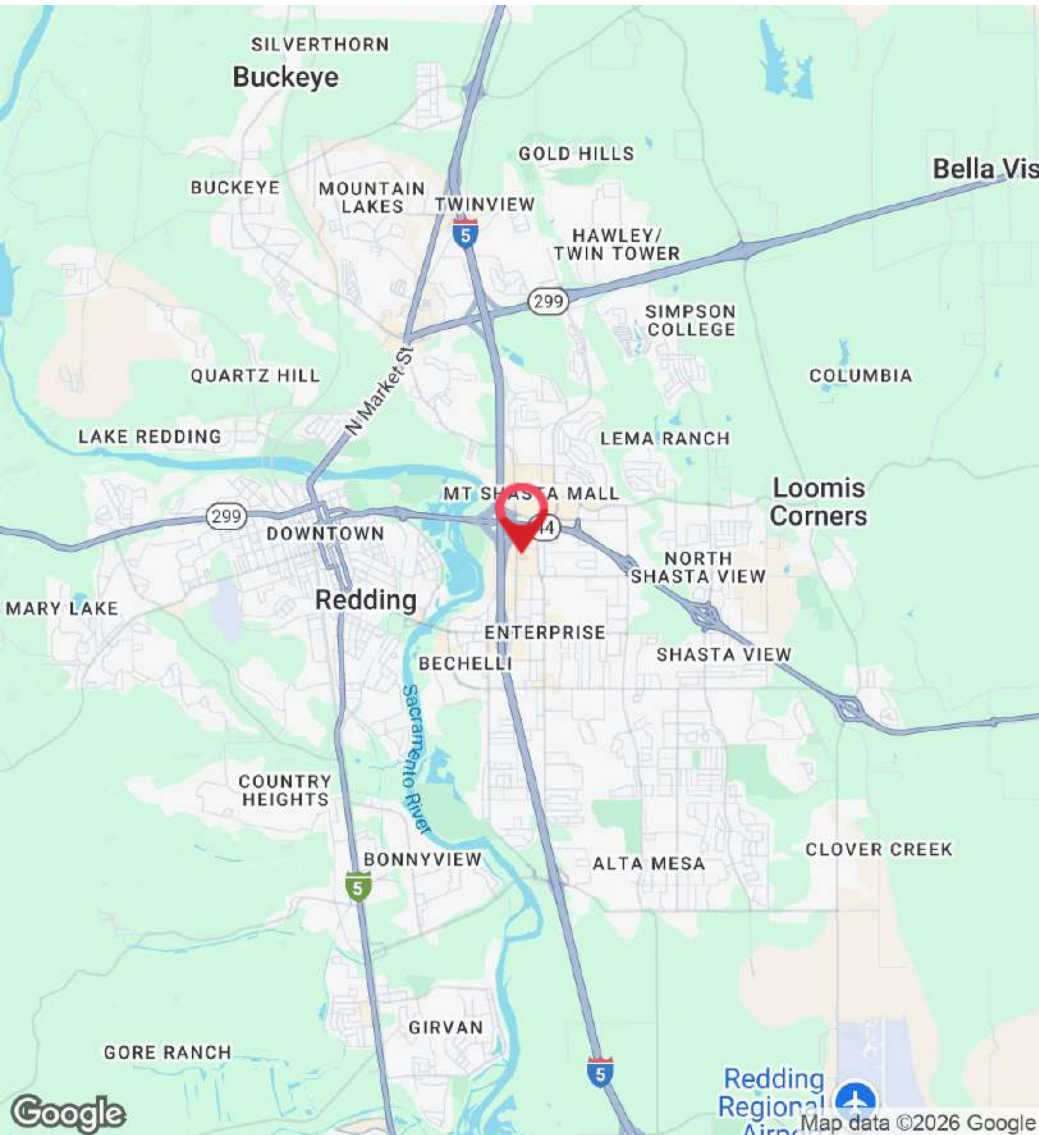
coxrec.com
CalDRE #01941996

The information above has been obtained from sources believed reliable. While we do not doubt its accuracy, we have not verified it and make no guarantee, warranty or representation about it. It is your responsibility to independently confirm its accuracy and completeness.

RETAIL PROPERTY FOR SALE & LEASE

LOCATION MAP

1987 HILLTOP DR, REDDING, CA 96002

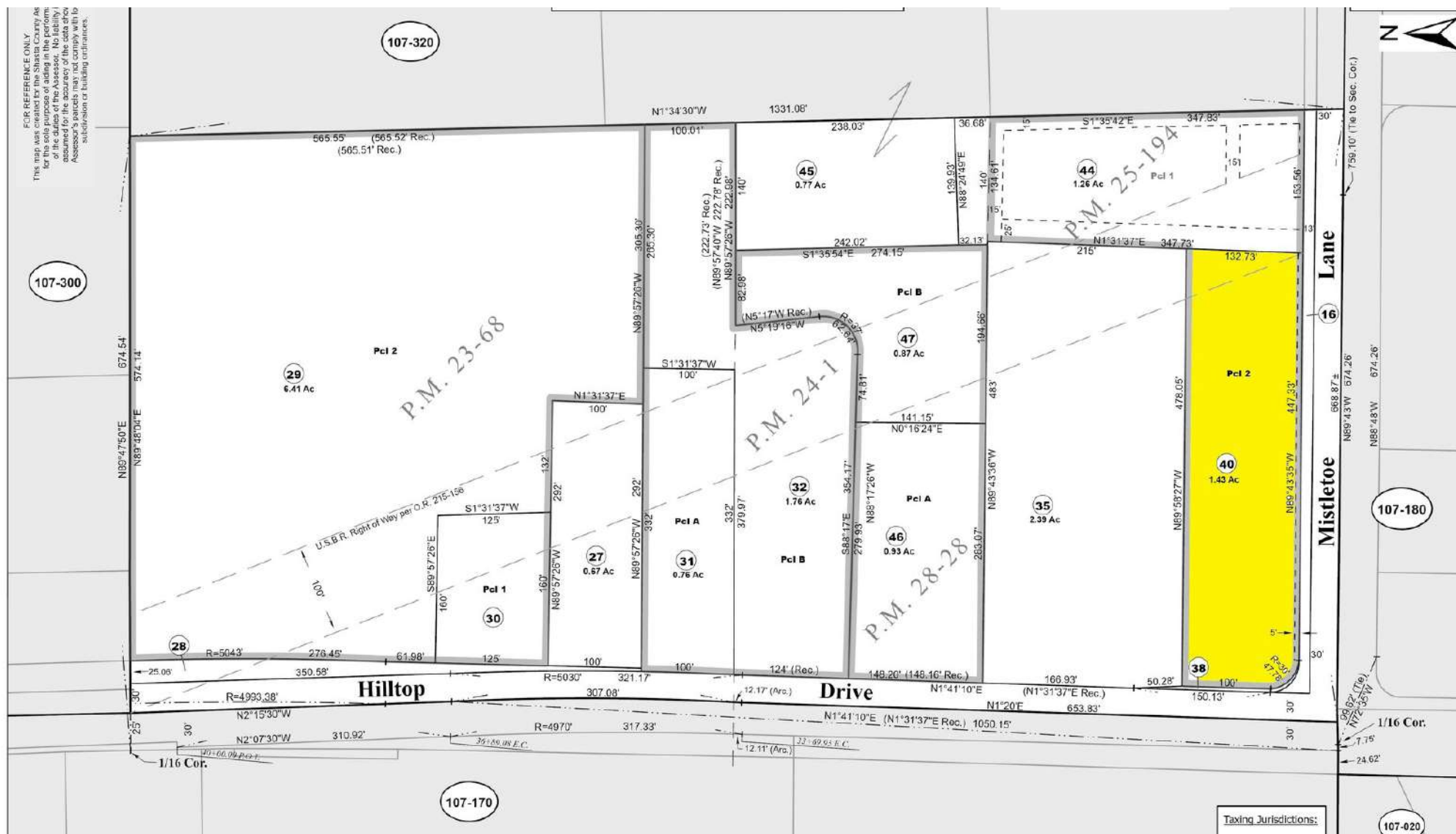


JESS WHITLOW, CCIM
Broker Associate/Consultant

530.605.5169
jess@coxrec.com

coxrec.com
CalDRE #01941996

The information above has been obtained from sources believed reliable. While we do not doubt its accuracy, we have not verified it and make no guarantee, warranty or representation about it. It is your responsibility to independently confirm its accuracy and completeness.



530.605.5169
jess@coxrec.com

coxrec.com
CaIDRE #01941996

The information above has been obtained from sources believed reliable. While we do not doubt its accuracy, we have not verified it and make no guarantee, warranty or representation about it. It is your responsibility to independently confirm its accuracy and completeness.

RETAIL PROPERTY FOR SALE & LEASE

RETAILER MAP

1987 HILLTOP DR, REDDING, CA 96002



JESS WHITLOW, CCIM
Broker Associate/Consultant

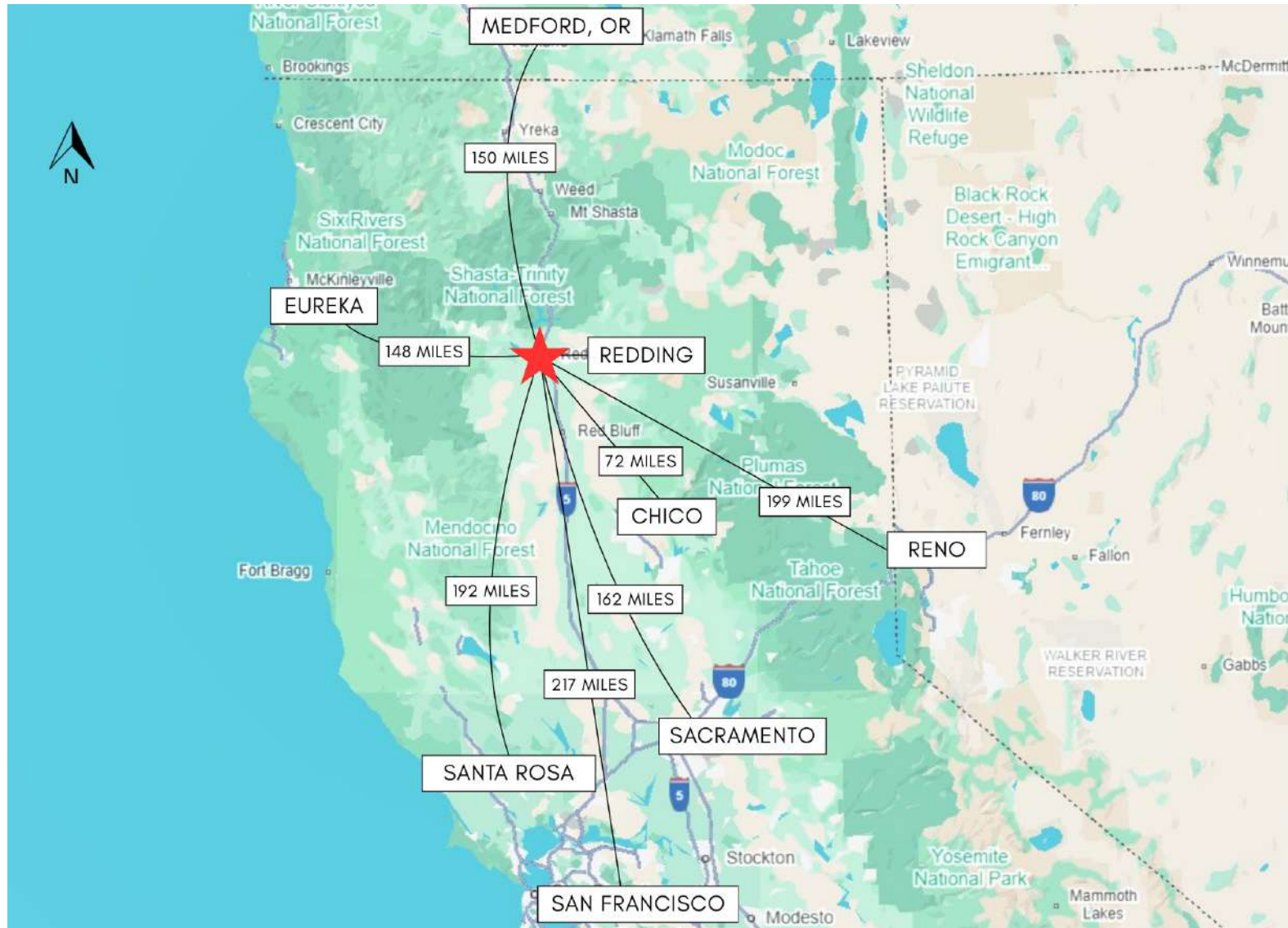
530.605.5169
jess@coxrec.com

coxrec.com
CalDRE #01941996

The information above has been obtained from sources believed reliable. While we do not doubt its accuracy, we have not verified it and make no guarantee, warranty or representation about it. It is your responsibility to independently confirm its accuracy and completeness.

REGIONAL MAP

1987 HILLTOP DR, REDDING, CA 96002



JESS WHITLOW, CCIM
Broker Associate/Consultant

530.605.5169
jess@coxrec.com

coxrec.com
CalDRE #01941996

NEARBY HOTELS

1987 HILLTOP DR, REDDING, CA 96002



HOTEL NAME	DISTANCE	NO. ROOMS	FOOD SERVICE OFFERED
Oxford Suites Redding	135'	141	Complimentary Local Cuisine Breakfast, Bar/Lounge
Comfort Inn Redding	300'	70	Complimentary Breakfast Buffet
Holiday Inn by IHG	500'	125	Poolside restaurant & Bar/Lounge (Braided Mane), Cook to Order Breakfast at a fee
Red Lion Hotel	0.10	500	Restaurant & Bar and Grill (Three Shastas Bar & Grill)
Quality Inn Redding near I-5	0.20	88	Complimentary Breakfast
Hampton Inn & Suites	0.20	80	Complimentary Breakfast
TownePlace Suites by Marriot	0.30	101	Complimentary Breakfast, Extended Stay (currently closed for remodel until 1/31/2026)
LaQuinta Inn & Suites by Wynham Redding	0.30	140	Complimentary Breakfast, Restaurant (Cattlemen's)
Motel 6 center	0.30	78	None. (next door to Mazatlan Restaurant)
Holiday Inn Express & Suites Redding	0.30	93	Complimentary Breakfast
Best Western Plus Hilltop Inn	0.30	114	Complimentary Breakfast, Restaurant (CR Gibbs)
MyPlace Hotels	0.70	64	None. 24 hr My Store (snacks, beverages, and essentials)
SureStay Plus by Best Western	0.70	84	Complimentary Breakfast (next door to Popeyes, Carls Jr, McDonalds)

JESS WHITLOW, CCIM
Broker Associate/Consultant

530.605.5169
jess@coxrec.com

coxrec.com
CalDRE #01941996

DEMOGRAPHICS MAP & REPORT

1987 HILLTOP DR, REDDING, CA 96002



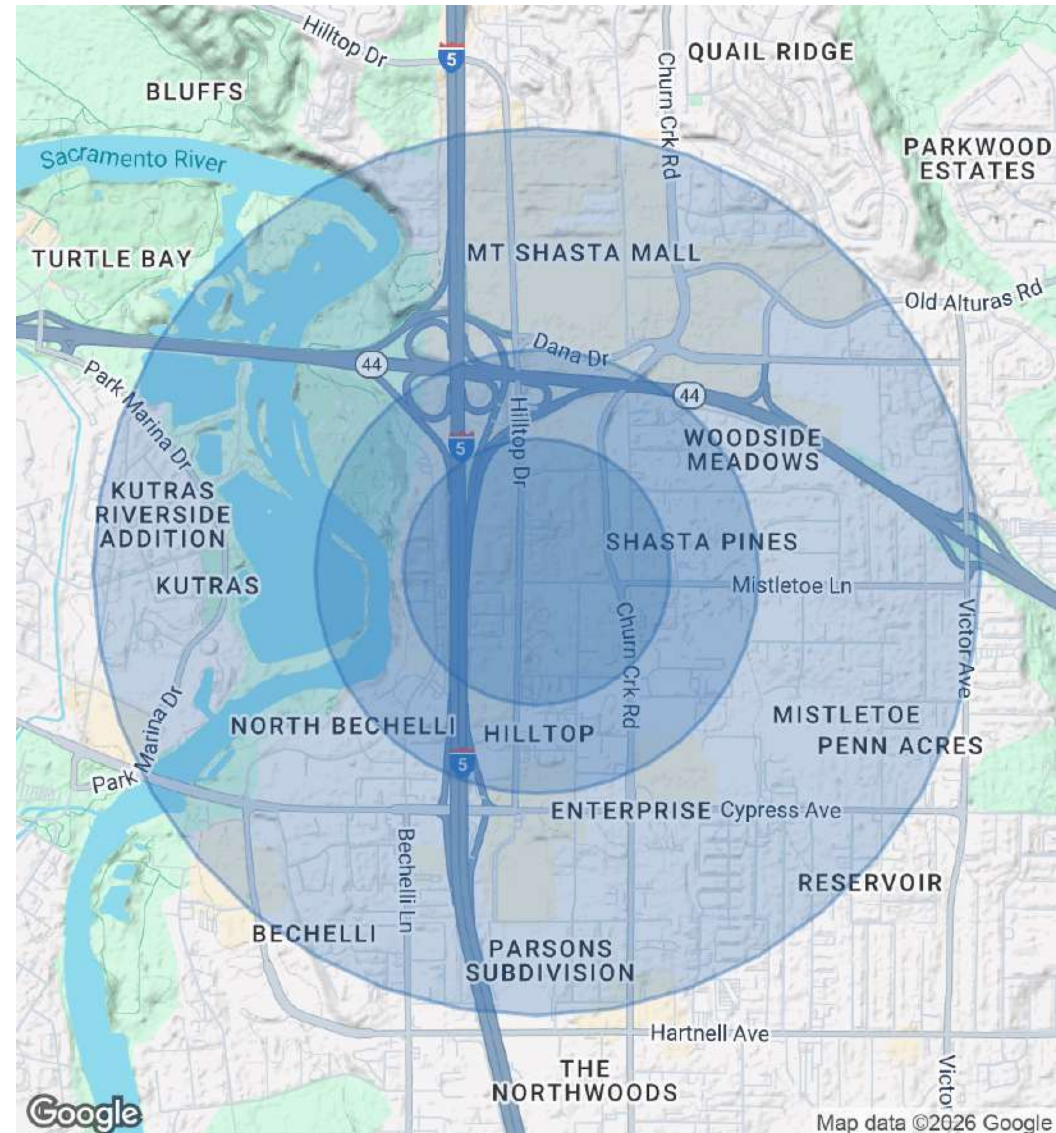
POPULATION

	0.3 MILES	0.5 MILES	1 MILE
Total Population	259	1,075	6,704
Average Age	42	42	41
Average Age (Male)	41	41	39
Average Age (Female)	44	44	43

HOUSEHOLDS & INCOME

	0.3 MILES	0.5 MILES	1 MILE
Total Households	100	416	2,905
# of Persons per HH	2.6	2.6	2.3
Average HH Income	\$86,073	\$85,896	\$76,527
Average House Value	\$347,865	\$348,960	\$350,991

Demographics data derived from AlphaMap



JESS WHITLOW, CCIM
Broker Associate/Consultant

530.605.5169
jess@coxrec.com

coxrec.com
CalDRE #01941996

MEET THE BROKER

1987 HILLTOP DR, REDDING, CA 96002



JESS WHITLOW, CCIM

Broker Associate/Consultant

jess@coxrec.com

Direct: **530.605.5169** | Cell: **530.605.5169**

CalDRE #01941996

PROFESSIONAL BACKGROUND

Jess is an experienced commercial real estate broker with a background in property management. She has worked in real estate since 2008 in the Los Angeles, Phoenix and Redding markets. She grew up in Redding and knows the Northern California regional market inside and out. Jess is consistently the most active commercial real estate broker in Redding based on the number of transactions handled each year. Her clients appreciate her exceptional client service, professionalism, dedication and responsiveness. She is passionate about commercial real estate because of the ability it provides to work with local investors, businesses and non-profits to help them meet their goals and being able to help them find creative solutions to their obstacles.

She has worked with many local non-profit organizations in a volunteer capacity such as Redding Rotary, Leadership Redding, Shasta Community Foundation and Turtle Bay Museum. Jess enjoys exploring the many outdoor adventures that Northern California and surrounding areas offer including hiking, paddle boarding, kayaking, ziplining and snowboarding.

EDUCATION

Jess holds a B.S. in Sociology with a minor in Psychology from the University of California, Santa Barbara.

She has completed the CCIM curriculum to become a Certified Commercial Investment Member

She is a licensed California Real Estate Broker

MEMBERSHIPS

CCIM - Certified Commercial Investment Member

Cox Real Estate Consultants - Jess Whitlow

1246 East St
Redding, CA 96001
530.605.5169

JESS WHITLOW, CCIM

Broker Associate/Consultant

530.605.5169

jess@coxrec.com

coxrec.com

CalDRE #01941996