

2,323 - 2,508 SF  
OFFICE SPACE



FOR SUBLEASE



ASKING RATE \$11.95 PSF GROSS

## Bingham Office Center

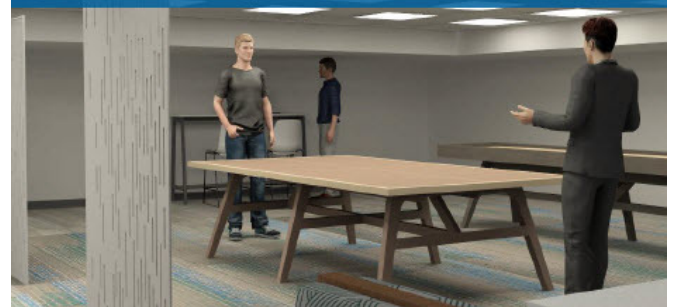
30600 Telegraph Rd, Suite 3155  
Bingham Farms, Michigan 48025

### Property Highlights

- Aggressive Lease Rates
- Lease Runs Through July 31, 2026
- Prime Telegraph Bingham Farms Location
- Surrounded by a Variety of Restaurants, Hotels and Other Service Businesses
- Building Amenities Include: On-site Property Management with Full Staff, Café, Sundry Shop, Building Collaborative Room, Building Conference Room, On-Site Security



**BUILDING LOUNGE AND BREAKROOM!**



**NAI Farbman**

Commercial Real Estate Services, Worldwide.

www.naifarbman.com

**Wendy Acho**

Leasing and Sales Associate | 248.563.0739  
acho@farbman.com

**Sheila Fogarty**

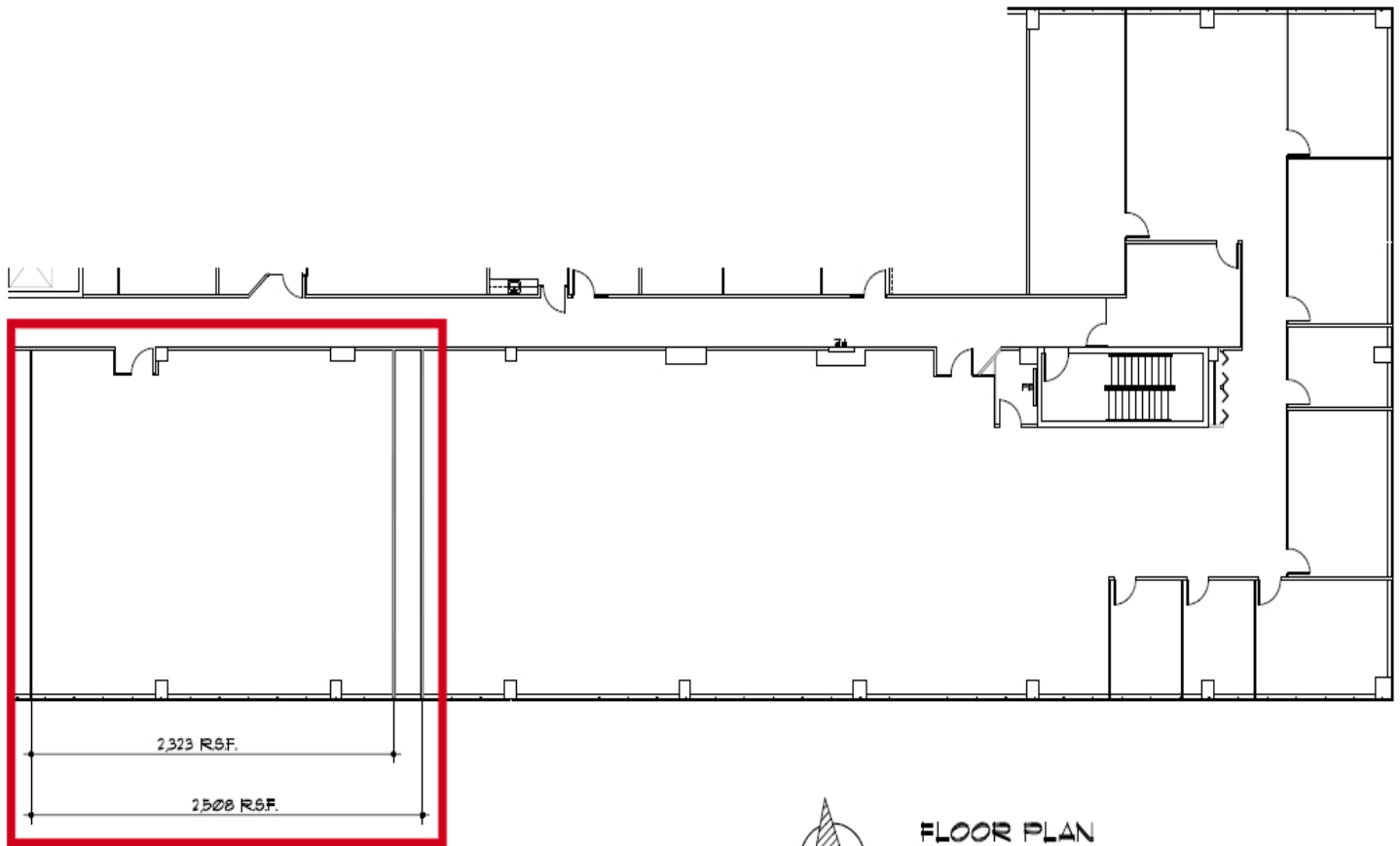
Senior Vice President | 248.798.9813  
fogarty@farbman.com

NO WARRANTY, EXPRESS OR IMPLIED, IS MADE AS TO THE ACCURACY OF THE INFORMATION CONTAINED HEREIN. THIS INFORMATION IS SUBMITTED SUBJECT TO ERRORS, OMISSIONS, CHANGE OF PRICE, RENTAL OR OTHER CONDITIONS, WITHDRAWAL WITHOUT NOTICE, AND IS SUBJECT TO ANY SPECIAL LISTING CONDITIONS IMPOSED BY OUR PRINCIPALS. COOPERATING BROKERS, BUYERS, TENANTS AND OTHER PARTIES WHO RECEIVE THIS DOCUMENT SHOULD NOT RELY ON IT, BUT SHOULD USE IT AS A STARTING POINT OF ANALYSIS, AND SHOULD INDEPENDENTLY CONFIRM THE ACCURACY OF THE INFORMATION CONTAINED HEREIN THROUGH A DUE DILIGENCE REVIEW OF THE BOOKS, RECORDS, FILES AND DOCUMENTS THAT CONSTITUTE RELIABLE SOURCES OF THE INFORMATION DESCRIBED HEREIN. LOGOS ARE FOR IDENTIFICATION PURPOSES ONLY AND MAY BE TRADEMARKS OF THEIR RESPECTIVE COMPANIES. NAI Farbman, INC. CA BRE LIC. #01990696.

# 2,323 - 2,508 SF OFFICE SPACE



## FOR SUBLEASE



### FLOOR PLAN

BINGHAM CENTER - SUITE 3155

BINGHAM FARMS, MI

DATE: 12-19-23

SCALE: 1/16" = 1'-0"

10,651 R.S.F.



Commercial Real Estate Services, Worldwide.  
www.naifarbman.com

#### Wendy Acho

Leasing and Sales Associate | 248.563.0739  
acho@farbman.com

#### Sheila Fogarty

Senior Vice President | 248.798.9813  
fogarty@farbman.com

NO WARRANTY, EXPRESS OR IMPLIED, IS MADE AS TO THE ACCURACY OF THE INFORMATION CONTAINED HEREIN. THIS INFORMATION IS SUBMITTED SUBJECT TO ERRORS, OMISSIONS, CHANGE OF PRICE, RENTAL OR OTHER CONDITIONS, WITHDRAWAL WITHOUT NOTICE, AND IS SUBJECT TO ANY SPECIAL LISTING CONDITIONS IMPOSED BY OUR PRINCIPALS, COOPERATING BROKERS, BUYERS, TENANTS AND OTHER PARTIES WHO RECEIVE THIS DOCUMENT SHOULD NOT RELY ON IT, BUT SHOULD USE IT AS A STARTING POINT OF ANALYSIS, AND SHOULD INDEPENDENTLY CONFIRM THE ACCURACY OF THE INFORMATION CONTAINED HEREIN THROUGH A DUE DILIGENCE REVIEW OF THE BOOKS, RECORDS, FILES AND DOCUMENTS THAT CONSTITUTE RELIABLE SOURCES OF THE INFORMATION DESCRIBED HEREIN. LOGOS ARE FOR IDENTIFICATION PURPOSES ONLY AND MAY BE TRADEMARKS OF THEIR RESPECTIVE COMPANIES. NAI Farbman, INC. CA BRE LIC. #01990696.