



# PLEASANT HILL OFFICE/RETAIL SPACE

1010 Sugarland Drive, Pleasant Hill, Missouri



## LEASE RATE: \$15/SF | 1,100 TO 2,200 SF SPACE

### DEMOGRAPHICS

	1 mile	3 miles	5 miles
Estimated Population	3,600	10,618	15,926
Avg. Household Income	\$128,673	\$114,395	\$129,863

- 2,200 SF available - great for professional office or service retail
- Could demise to 1,100 SF
- 2022 Build - multi tenant office building with residential units above
- White box delivery
- Located in main trade corridor of Pleasant Hill with easy access to 7 Highway
- Signage on future monument sign available

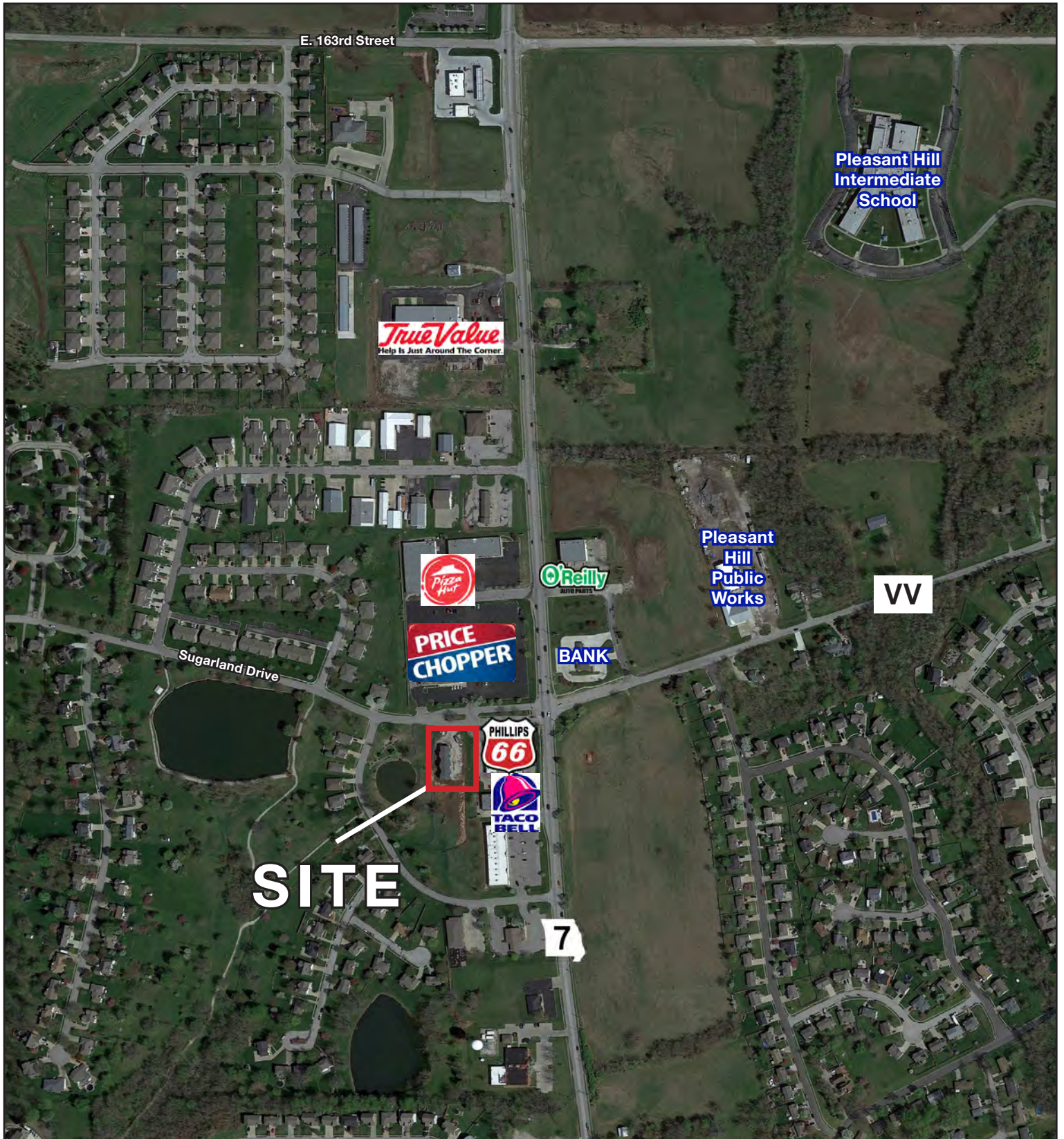
 [CLICK HERE TO VIEW MORE LISTING INFORMATION](#)

For More Information Contact:

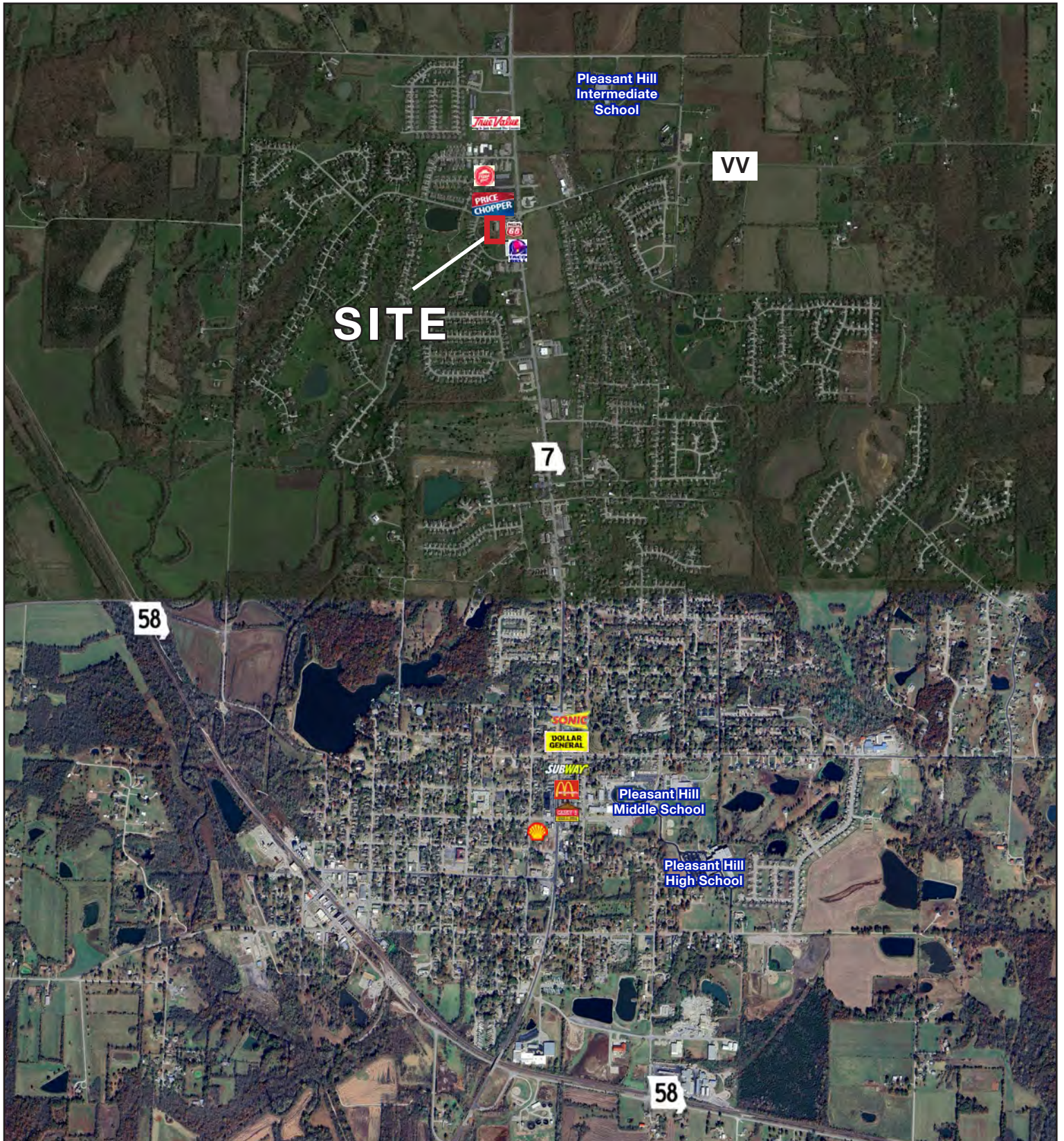
*Exclusive Agents*  
**KARSYN SMITH** | 816.412.7372 | [ksmith@blockandco.com](mailto:ksmith@blockandco.com)  
**BILL MAAS, CCIM** | 816.412.7392 | [bmaas@blockandco.com](mailto:bmaas@blockandco.com)



## AERIAL



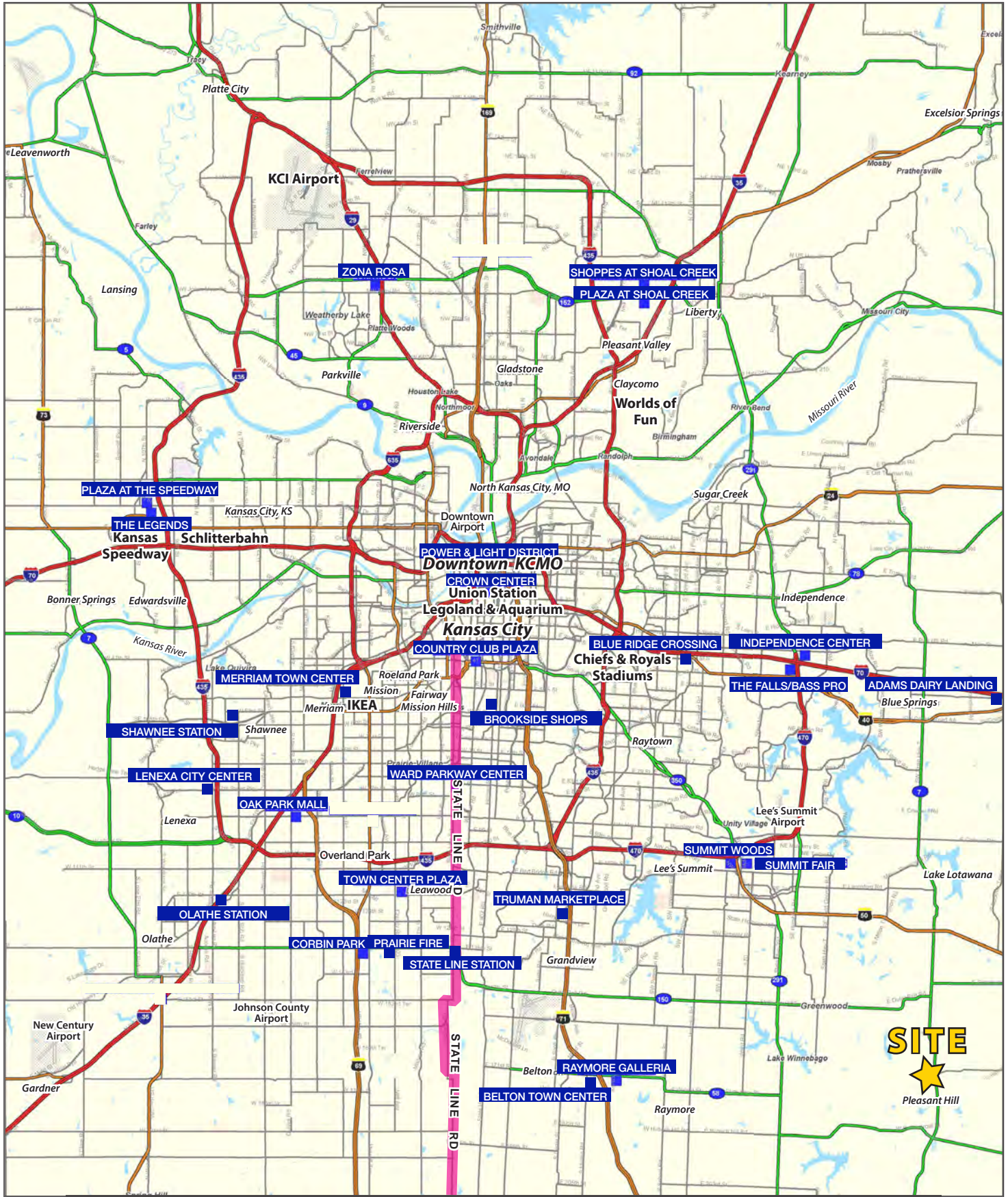
## AERIAL





# PLEASANT HILL OFFICE/RETAIL SPACE

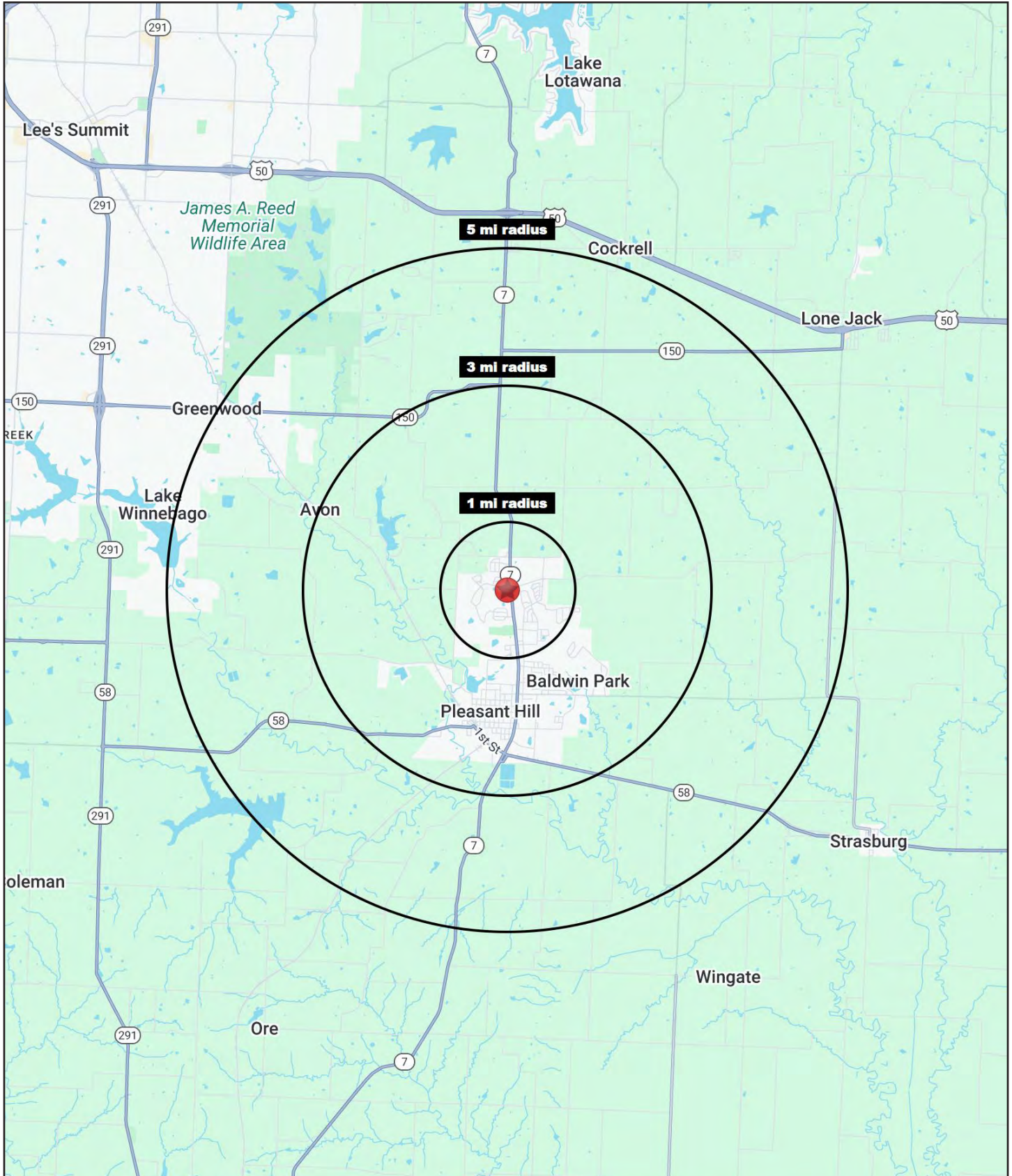
1010 Sugarland Drive, Pleasant Hill, Missouri





# PLEASANT HILL OFFICE/RETAIL SPACE

1010 Sugarland Drive, Pleasant Hill, Missouri





# PLEASANT HILL OFFICE/RETAIL SPACE

## 1010 Sugarland Drive, Pleasant Hill, Missouri

1010 Sugarland Drive Pleasant Hill, MO 64080	1 mi radius	3 mi radius	5 mi radius
<b>Population</b>			
2024 Estimated Population	3,600	10,618	15,926
2029 Projected Population	3,767	11,152	16,886
2020 Census Population	3,506	10,324	15,200
2010 Census Population	3,198	9,484	13,570
Projected Annual Growth 2024 to 2029	0.9%	1.0%	1.2%
Historical Annual Growth 2010 to 2024	0.9%	0.9%	1.2%
2024 Median Age	38.0	37.6	38.9
<b>Households</b>			
2024 Estimated Households	1,310	4,033	5,957
2029 Projected Households	1,368	4,243	6,331
2020 Census Households	1,268	3,825	5,591
2010 Census Households	1,157	3,471	4,963
Projected Annual Growth 2024 to 2029	0.9%	1.0%	1.3%
Historical Annual Growth 2010 to 2024	0.9%	1.2%	1.4%
<b>Race and Ethnicity</b>			
2024 Estimated White	92.9%	92.6%	91.7%
2024 Estimated Black or African American	1.3%	1.2%	2.0%
2024 Estimated Asian or Pacific Islander	0.4%	0.6%	0.6%
2024 Estimated American Indian or Native Alaskan	0.3%	0.3%	0.3%
2024 Estimated Other Races	5.1%	5.3%	5.3%
2024 Estimated Hispanic	4.4%	4.5%	4.4%
<b>Income</b>			
2024 Estimated Average Household Income	\$128,673	\$114,395	\$129,863
2024 Estimated Median Household Income	\$123,226	\$99,861	\$110,536
2024 Estimated Per Capita Income	\$46,828	\$43,490	\$48,597
<b>Education (Age 25+)</b>			
2024 Estimated Elementary (Grade Level 0 to 8)	0.4%	1.2%	1.1%
2024 Estimated Some High School (Grade Level 9 to 11)	3.9%	3.0%	2.8%
2024 Estimated High School Graduate	30.9%	33.9%	30.6%
2024 Estimated Some College	21.6%	25.0%	24.1%
2024 Estimated Associates Degree Only	6.8%	7.4%	7.7%
2024 Estimated Bachelors Degree Only	19.6%	17.5%	20.9%
2024 Estimated Graduate Degree	16.8%	12.0%	12.7%
<b>Business</b>			
2024 Estimated Total Businesses	118	267	358
2024 Estimated Total Employees	635	1,819	2,466
2024 Estimated Employee Population per Business	5.4	6.8	6.9
2024 Estimated Residential Population per Business	30.5	39.8	44.4

©2025, Sites USA, Chandler, Arizona, 480-491-1112 Demographic Source: Applied Geographic Solutions 11/2024, TIGER Geography - RS1