



For lease

3,200 SF - 6,400 SF
Office Space

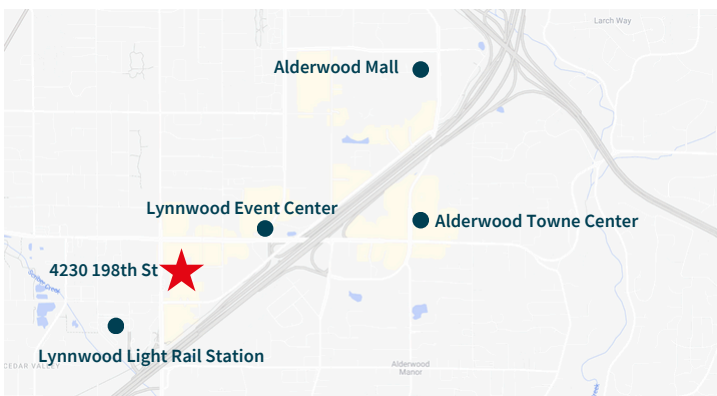
4230 198th Street SW
Lynnwood, WA 98036

Highlights

- 1st floor available now | 3,200 SF
- 2nd floor can be made available 2/1/2026 for an additional 3,200 SF
- Local ownership and management
- One block away from Lynnwood Light Rail station and Lynwood Convention Center
- Reception, multiple conference rooms, exterior private offices, staff breakrooms, and shower.
- Surface parking lot with secure fence



Centrally located between
Lynnwood's major amenities!



Lynnwood Event Center



Lynnwood Light Rail Station

Jake Bos

Senior Vice President, JLL
jake.bos@jll.com
+1 (206) 384 3814

Bailey Hallis

Associate Broker, JLL
bailey.hallis@jll.com
+1 (206) 777 5203

Rod Keefe

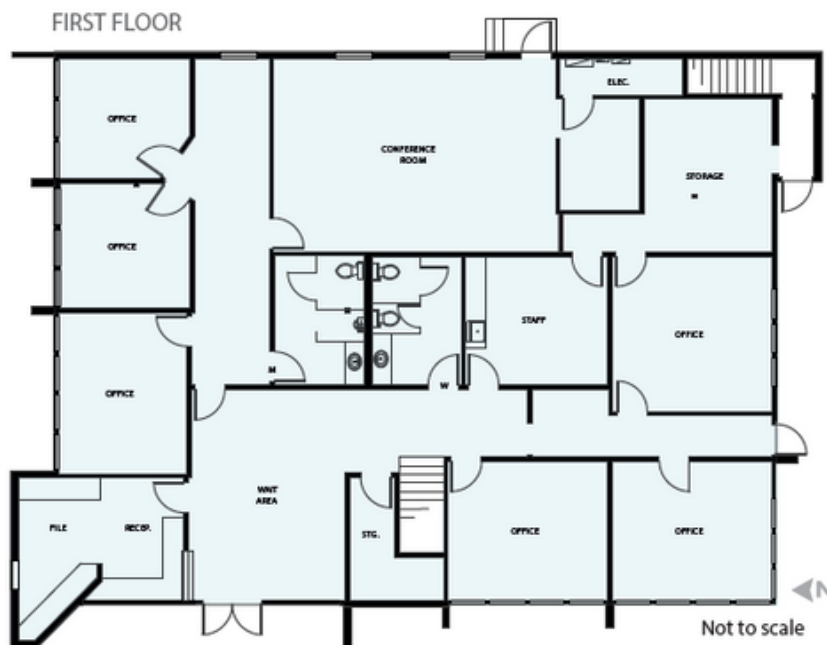
Senior Vice President, Kidder Mathews
rod.keefe@kidder.com
+1 (206) 819 7556



1st Floor

3,200 SF | Available Now

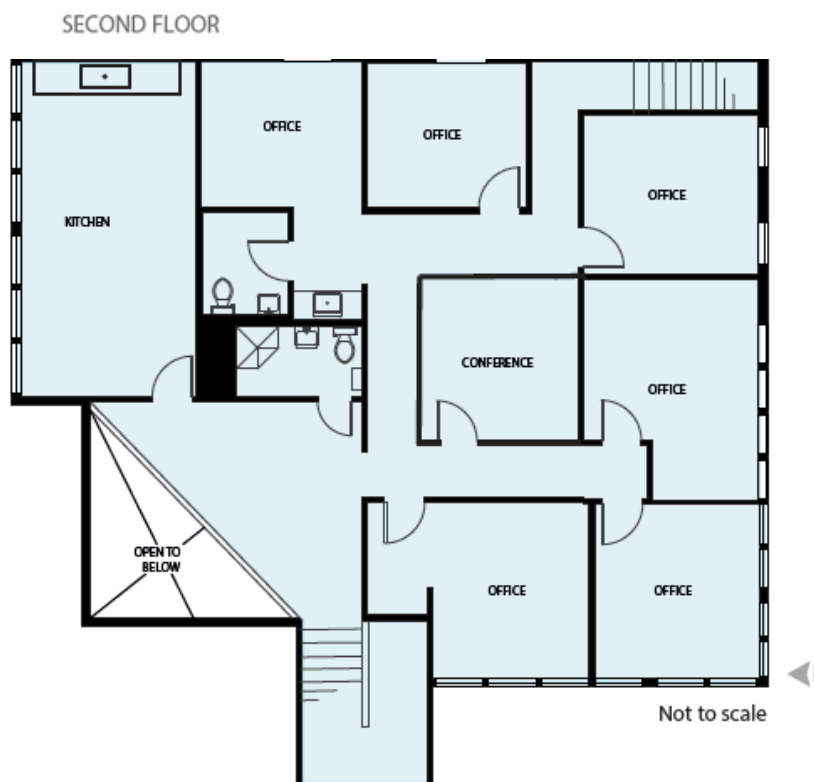
Generous reception area, large training room, kitchen and six exterior private offices, and two restrooms.



2nd Floor

3,200 SF | Can be made available on 2/1/2026

Large kitchen, six private offices, conference room, two restrooms, and a shower.



Jake Bos

Senior Vice President, JLL
jake.bos@jll.com
+1 (206) 384 3814

Bailey Hallis

Associate Broker, JLL
bailey.hallis@jll.com
+1 (206) 777 5203

Rod Keefe

Senior Vice President, Kidder Mathews
rod.keefe@kidder.com
+1 (206) 819 7556