



## ±2,282 - ±10,683 Shopping Center Spaces in Fresno



Lease Rate

**\$1.25 - 1.55  
SF/MONTH**

### OFFERING SUMMARY

Building Size:	105,416 SF
Available SF:	2,282 - 22,557 SF
Lot Size:	333,200 SF
NNN's:	\$0.43 SF/Month
Year Built:	1968
Zoning:	Commercial
Market:	Fresno
Submarket:	Midtown East Fresno
Traffic Count:	21,812
APN:	170-231-006 & -005

### PROPERTY HIGHLIGHTS

- Corner Pad Building ±7,200 SF and Former Home Town Buffet ±10,863 SF
- Street Inline Retail ±2,341 SF and Inline Retail ±2,282 SF
- Former Dollar Tree ±22,557 SF Retail Space
- Highly Visible Intersection w/ Ample Parking & Easy Access
- Close Proximity to Major Retailers, Restaurants, & Residential Areas
- Direct Blackstone Ave Visibility | Surrounded w/ Quality Tenants
- Close Proximity to Major Traffic Generators & CA-168 Ramps
- Densely Populated Trade Area w/ 398,647 People in 5-Miles Radius
- Great Exposure from CA-168, Blackstone and Shield Avenues
- Surrounded by Quality National Tenants Including Banks, Retail Stores, and Automotive Shops
- Exceptional Space Options for a Wide Variety of Uses
- Near Proximity to Other Shopping Centers
- Center Blackstone Location Amid a Long Line of Retail Stores
- High Foot & Vehicle Traffic - Ideal For Retail Businesses
- Nearby Schools and Residential Areas

#### Jared Ennis

CalDRE #01945284

Executive Vice President

jared@centralcacommercial.com

559.705.1000

#### Kevin Land

CalDRE #01516541

Executive Managing Director

kevin@centralcacommercial.com

559.705.1000

#### Central CA Commercial

Investments | Industrial | Office

Multifamily | Retail | Land | Specialty

**CentralCaCommercial.com**

We obtained the information above from sources we believe to be reliable. However, we have not verified its accuracy and make no guarantee, warranty or representation about it. It is submitted subject to the possibility of errors, omissions, change of price, rental or other conditions, prior sale, lease or financing, or withdrawal without notice. We include projections, opinions, assumptions or estimates for example only, and they may not represent current or future performance of the property. You and your tax and legal advisors should conduct your own investigation of the property and transaction.





## ±2,282 - ±10,683 Shopping Center Spaces in Fresno

### PROPERTY DESCRIPTION

Prime Anchor Shopping Center Space is well-located on Fresno's busiest #1 Retail destination corridor Blackstone Avenue historically serving the vast majority of Fresno and Clovis residents. (5) separate available spaces in Manchester North Shopping Center on Blackstone that includes a ±7,200 SF drive-thru pad on corner of N Blackstone and East Garland. Building features private offices, open center space, and private bathroom, ±10,683 SF restaurant space available in between Planet Fitness and Dollar Tree. Features include private bathrooms, booth seating, open dining area, ample storage space, and kitchen sinks. ±2,341 SF center space located between a Subway and Smileland Dental and a space that features private restrooms, built in storage shelves, and space dividers. ±2,282 SF customizable space between Planet Fitness and Grifols. ±22,557 SF former Dollar Tree retail space in corner location of shopping center.

### LOCATION DESCRIPTION

Visible location on N Blackstone and Shields in shopping center with lots of foot traffic and ample parking space. Multiple spaces with a variety of different uses like a restaurant, drive-thru pad, and strip retail space. Quality tenants in shopping center include Grifols, Planet Fitness, Dollar Tree, Hair-way to Heaven, Subway, and Smileland Dental. Other surrounding tenants include Arco, Sinclair, McDonalds, Regal Manchester, Chase Bank, The Red Chickz, dd's Discounts, AT&T, Ross, Walmart Supercenter, Petco, Jiffy Lube, Les Schwab Tire Center, and Goodguys Tire and Auto.

Fresno is a city in the San Joaquin Valley of California, United States. It is the county seat of Fresno County and the largest city in the greater Central Valley region, as well as the most populated city in Central California. It covers about 114.7 square miles (297 km<sup>2</sup>) and had a population of 542,107 as of the 2020 census, making it the fifth-most populous city in California, the most populous inland city in California, and the 34th-most populous city in the nation.



#### Jared Ennis

CalDRE #01945284

Executive Vice President

jared@centralcacommercial.com

559.705.1000

#### Kevin Land

CalDRE #01516541

Executive Managing Director

kevin@centralcacommercial.com

559.705.1000

#### Central CA Commercial

Investments | Industrial | Office

Multifamily | Retail | Land | Specialty

**CentralCaCommercial.com**

We obtained the information above from sources we believe to be reliable. However, we have not verified its accuracy and make no guarantee, warranty or representation about it. It is submitted subject to the possibility of errors, omissions, change of price, rental or other conditions, prior sale, lease or financing, or withdrawal without notice. We include projections, opinions, assumptions or estimates for example only, and they may not represent current or future performance of the property. You and your tax and legal advisors should conduct your own investigation of the property and transaction.





## ±2,282 - ±10,683 Shopping Center Spaces in Fresno



## AVAILABLE SPACES

SUITE	SIZE (SF)	LEASE TYPE	LEASE RATE	DESCRIPTION
3720 N Blackstone Corner Pad Building	7,200 SF	NNN's \$0.43 SF/month	\$1.50 SF/month	±7,200 SF drive-thru pad on corner of N Blackstone and East Garland. Building features private offices, open center space, and private bathroom.
3730 N Blackstone Fmr Dollar Tree	22,557 SF	NNN's \$0.43 SF/month	Negotiable	±22,557 SF former Dollar Tree End Cap retail space. The column spacing is 36' W by 38' L and the clear height under the drop ceiling is 11'5.
3744 N Blackstone Fmr Hometown Buffett	10,683 SF	NNN's \$0.43 SF/month	\$1.25 SF/month	±10,683 SF restaurant space available in between Planet Fitness and Dollar Tree. Features include private bathrooms, booth seating, open dining area, ample storage space, and kitchen sinks.
3764 N Blackstone Inline Retail	2,282 SF	NNN's \$0.43 SF/month	\$1.35 SF/month	±2,282 SF customizable space between Planet Fitness and Grifols.

**Jared Ennis**

CalDRE #01945284

Executive Vice President

jared@centralcacommercial.com

559.705.1000

**Kevin Land**

CalDRE #01516541

Executive Managing Director

kevin@centralcacommercial.com

559.705.1000

**Central CA Commercial**

Investments | Industrial | Office

Multifamily | Retail | Land | Specialty

**CentralCaCommercial.com**

We obtained the information above from sources we believe to be reliable. However, we have not verified its accuracy and make no guarantee, warranty or representation about it. It is submitted subject to the possibility of errors, omissions, change of price, rental or other conditions, prior sale, lease or financing, or withdrawal without notice. We include projections, opinions, assumptions or estimates for example only, and they may not represent current or future performance of the property. You and your tax and legal advisors should conduct your own investigation of the property and transaction.



±2,282 - ±10,683 Shopping Center Spaces in Fresno



SUITE	SIZE (SF)	LEASE TYPE	LEASE RATE	DESCRIPTION
3786 N Blackstone Inline Street Retail	2,341 SF	NNN's \$0.43 SF/month	\$1.55 SF/month	±2,341 SF center space located between a Subway and Smileland Dental. Space features private restrooms, built in storage shelves, and space dividers.

**Jared Ennis**  
CalDRE #01945284  
Executive Vice President  
jared@centralcacommercial.com  
559.705.1000

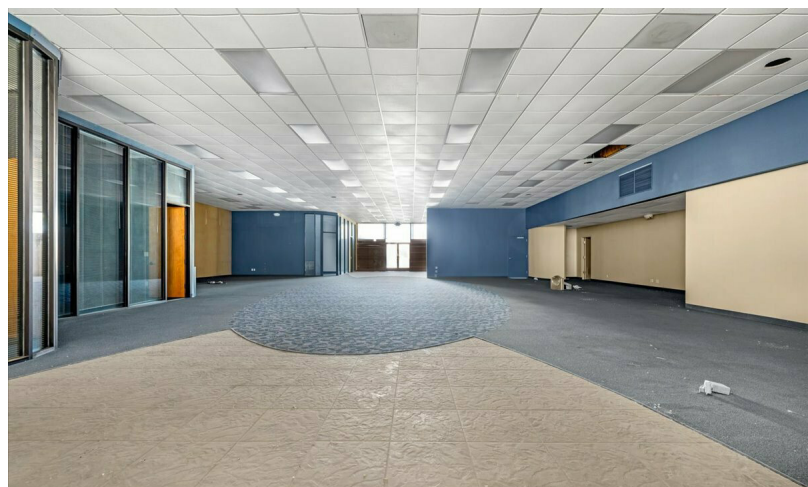
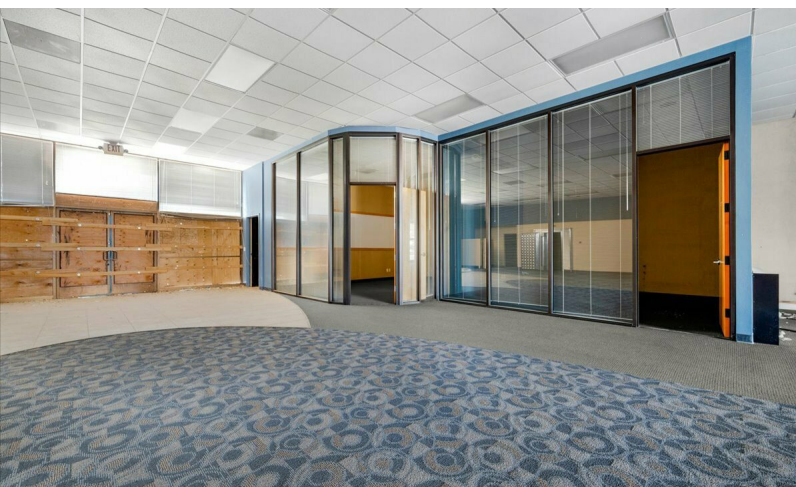
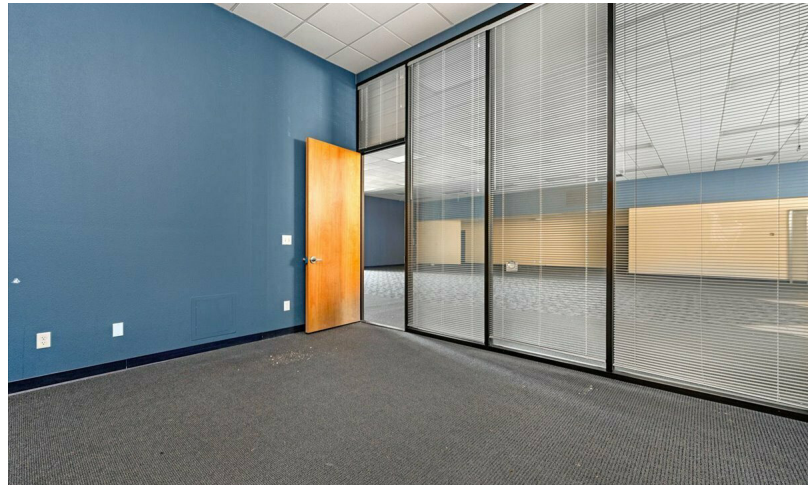
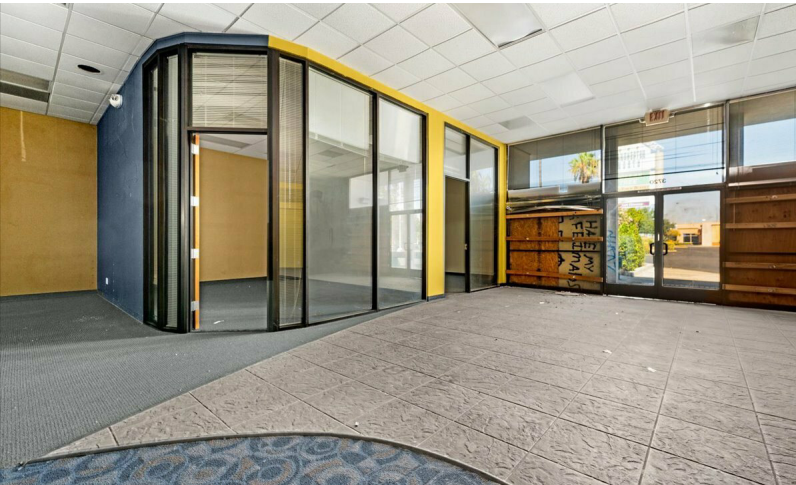
**Kevin Land**  
CalDRE #01516541  
Executive Managing Director  
kevin@centralcacommercial.com  
559.705.1000

**Central CA Commercial**  
Investments | Industrial | Office  
Multifamily | Retail | Land | Specialty  
**CentralCaCommercial.com**

We obtained the information above from sources we believe to be reliable. However, we have not verified its accuracy and make no guarantee, warranty or representation about it. It is submitted subject to the possibility of errors, omissions, change of price, rental or other conditions, prior sale, lease or financing, or withdrawal without notice. We include projections, opinions, assumptions or estimates for example only, and they may not represent current or future performance of the property. You and your tax and legal advisors should conduct your own investigation of the property and transaction.



## Premier Corner Pad



**Jared Ennis**

CalDRE #01945284

Executive Vice President

jared@centralcacommercial.com

559.705.1000

**Kevin Land**

CalDRE #01516541

Executive Managing Director

kevin@centralcacommercial.com

559.705.1000

**Central CA Commercial**

Investments | Industrial | Office

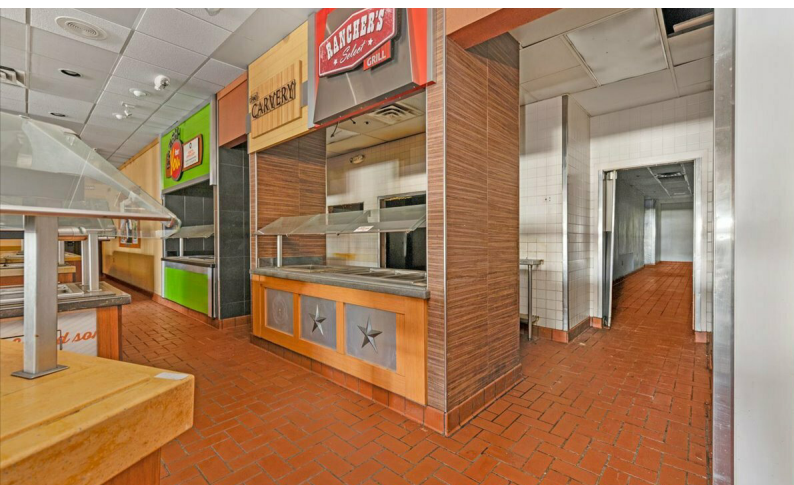
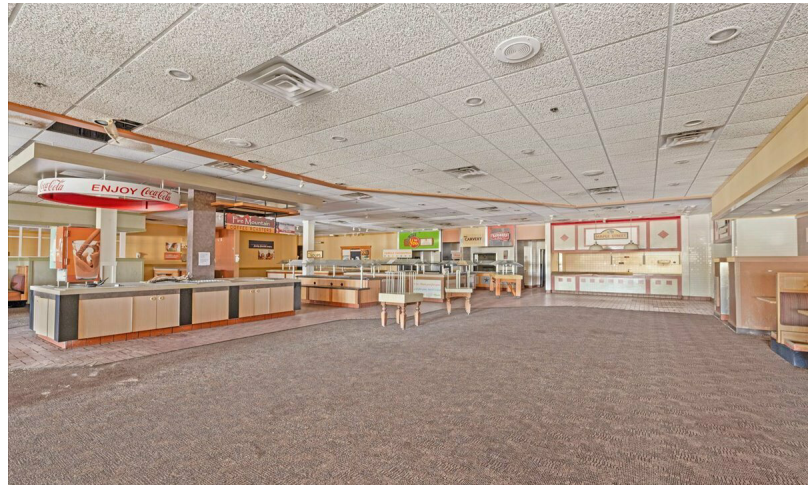
Multifamily | Retail | Land | Specialty

**CentralCaCommercial.com**

We obtained the information above from sources we believe to be reliable. However, we have not verified its accuracy and make no guarantee, warranty or representation about it. It is submitted subject to the possibility of errors, omissions, change of price, rental or other conditions, prior sale, lease or financing, or withdrawal without notice. We include projections, opinions, assumptions or estimates for example only, and they may not represent current or future performance of the property. You and your tax and legal advisors should conduct your own investigation of the property and transaction.



## Former HomeTown Buffet Space



**Jared Ennis**

CalDRE #01945284

Executive Vice President

jared@centralcacommercial.com

559.705.1000

**Kevin Land**

CalDRE #01516541

Executive Managing Director

kevin@centralcacommercial.com

559.705.1000

**Central CA Commercial**

Investments | Industrial | Office

Multifamily | Retail | Land | Specialty

**CentralCaCommercial.com**

We obtained the information above from sources we believe to be reliable. However, we have not verified its accuracy and make no guarantee, warranty or representation about it. It is submitted subject to the possibility of errors, omissions, change of price, rental or other conditions, prior sale, lease or financing, or withdrawal without notice. We include projections, opinions, assumptions or estimates for example only, and they may not represent current or future performance of the property. You and your tax and legal advisors should conduct your own investigation of the property and transaction.

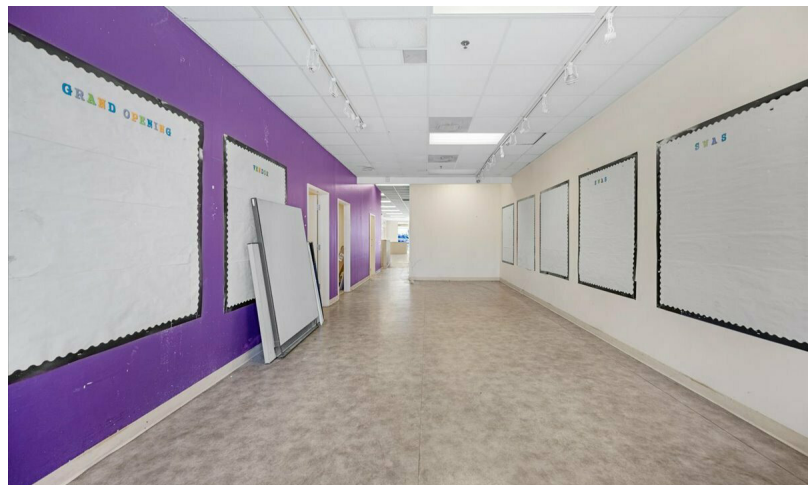
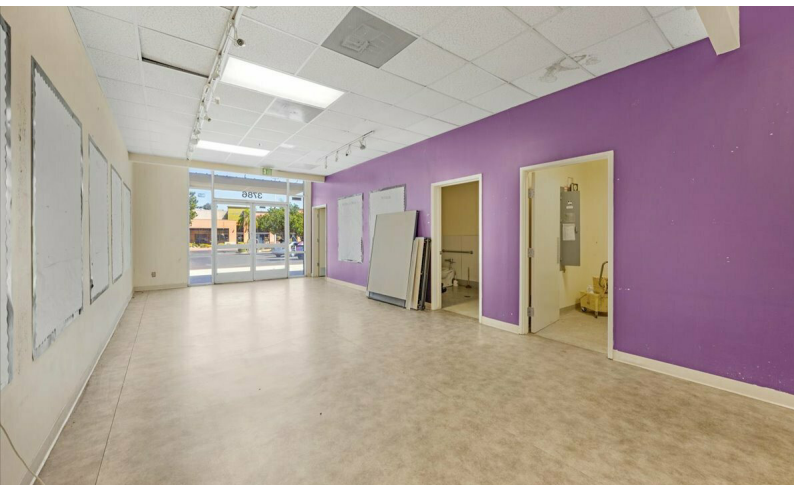


Retail For Lease | 3720-3790 N. Blackstone Ave Fresno, CA 93726



**CENTRAL CA  
COMMERCIAL**

## Inline Street Retail



**Jared Ennis**

CalDRE #01945284

Executive Vice President

jared@centralcacommercial.com

559.705.1000

**Kevin Land**

CalDRE #01516541

Executive Managing Director

kevin@centralcacommercial.com

559.705.1000

**Central CA Commercial**

Investments | Industrial | Office

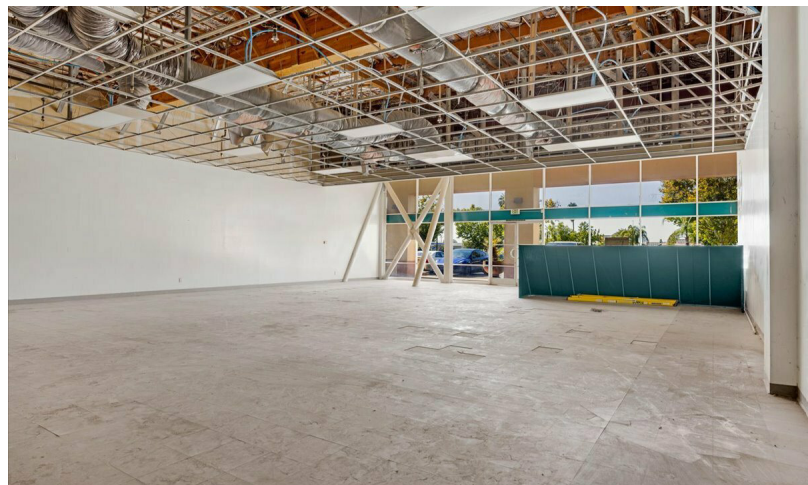
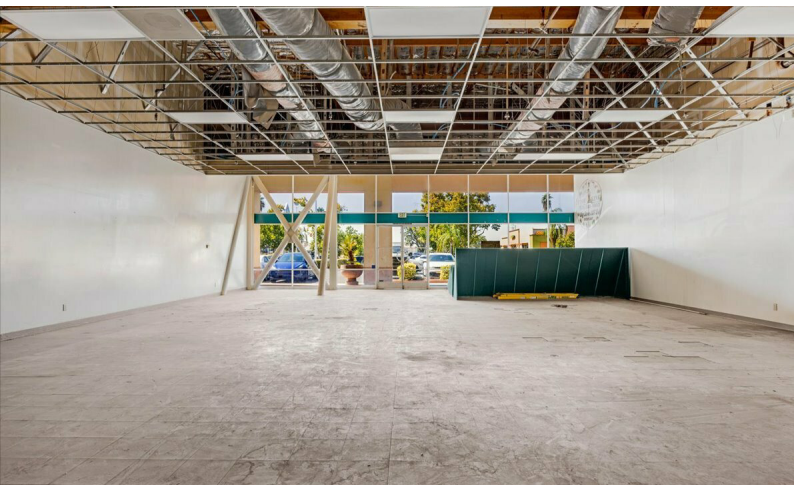
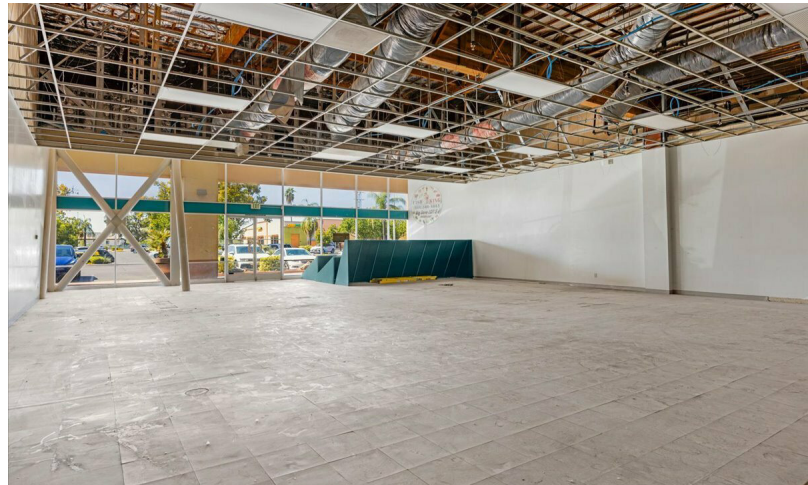
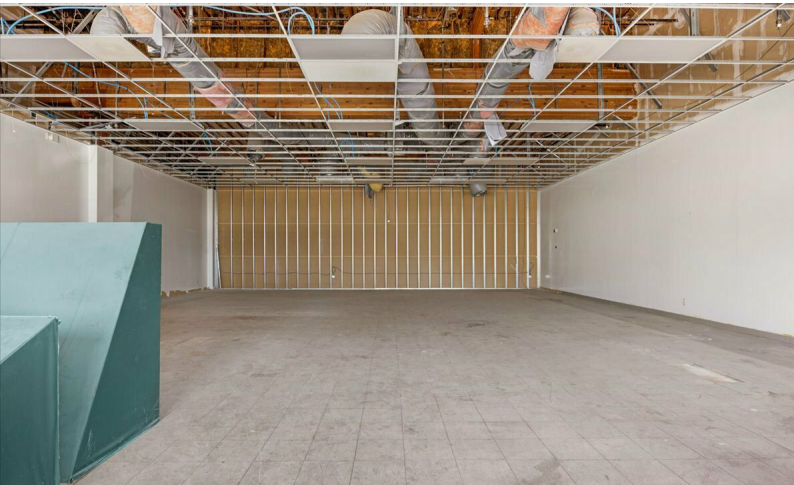
Multifamily | Retail | Land | Specialty

**CentralCaCommercial.com**

We obtained the information above from sources we believe to be reliable. However, we have not verified its accuracy and make no guarantee, warranty or representation about it. It is submitted subject to the possibility of errors, omissions, change of price, rental or other conditions, prior sale, lease or financing, or withdrawal without notice. We include projections, opinions, assumptions or estimates for example only, and they may not represent current or future performance of the property. You and your tax and legal advisors should conduct your own investigation of the property and transaction.



## Inline Retail



**Jared Ennis**

CalDRE #01945284

Executive Vice President

jared@centralcacommercial.com

559.705.1000

**Kevin Land**

CalDRE #01516541

Executive Managing Director

kevin@centralcacommercial.com

559.705.1000

**Central CA Commercial**

Investments | Industrial | Office

Multifamily | Retail | Land | Specialty

**CentralCaCommercial.com**

We obtained the information above from sources we believe to be reliable. However, we have not verified its accuracy and make no guarantee, warranty or representation about it. It is submitted subject to the possibility of errors, omissions, change of price, rental or other conditions, prior sale, lease or financing, or withdrawal without notice. We include projections, opinions, assumptions or estimates for example only, and they may not represent current or future performance of the property. You and your tax and legal advisors should conduct your own investigation of the property and transaction.



**±2,282 - ±10,683 Shopping Center Spaces in Fresno**



**Jared Ennis**

CalDRE #01945284

Executive Vice President

jared@centralcacommercial.com

559.705.1000

**Kevin Land**

CalDRE #01516541

Executive Managing Director

kevin@centralcacommercial.com

559.705.1000

**Central CA Commercial**

Investments | Industrial | Office

Multifamily | Retail | Land | Specialty

**CentralCaCommercial.com**

We obtained the information above from sources we believe to be reliable. However, we have not verified its accuracy and make no guarantee, warranty or representation about it. It is submitted subject to the possibility of errors, omissions, change of price, rental or other conditions, prior sale, lease or financing, or withdrawal without notice. We include projections, opinions, assumptions or estimates for example only, and they may not represent current or future performance of the property. You and your tax and legal advisors should conduct your own investigation of the property and transaction.

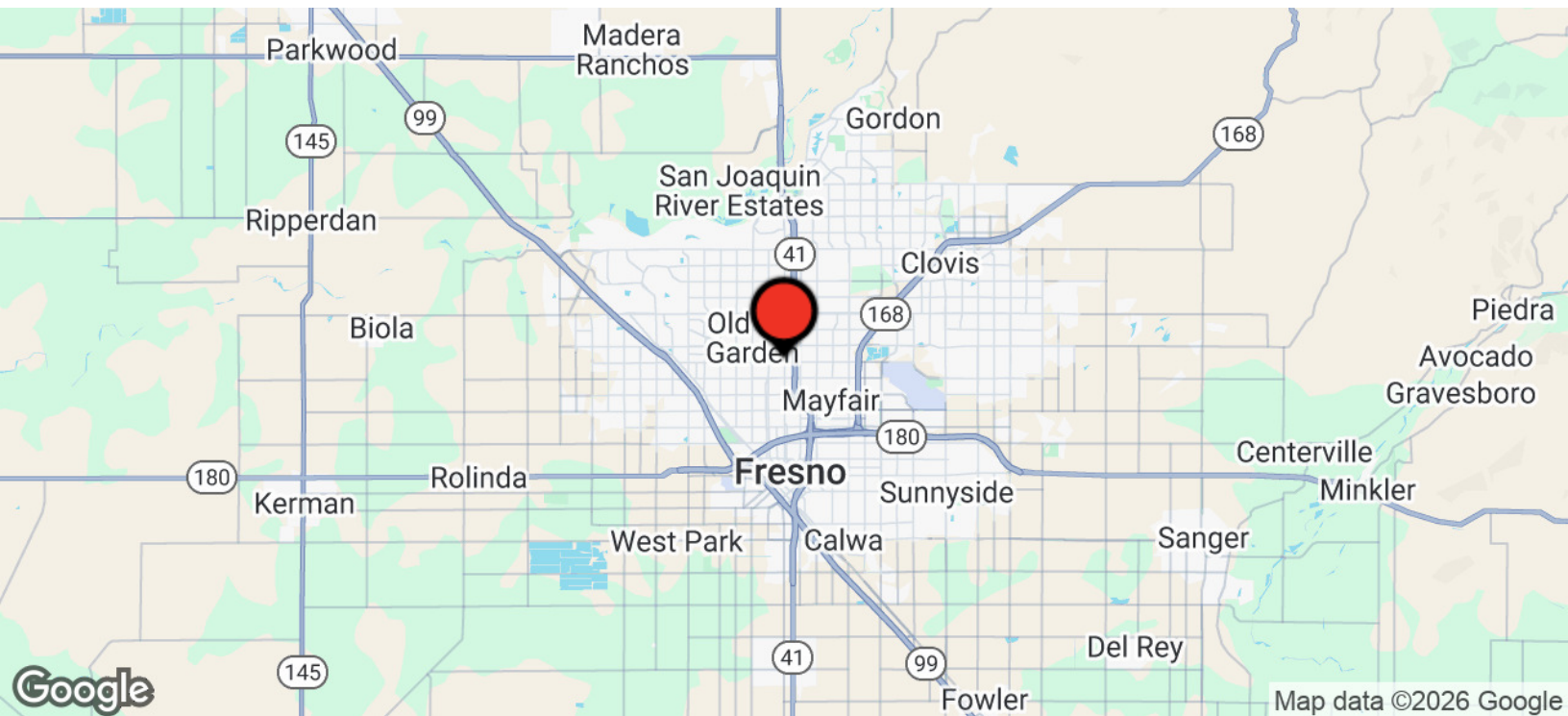


Retail For Lease | 3720-3790 N. Blackstone Ave Fresno, CA 93726



**CENTRAL CA  
COMMERCIAL**

**±2,282 - ±10,683 Shopping Center Spaces in Fresno**



**Jared Ennis**

CalDRE #01945284

Executive Vice President

jared@centralcacommercial.com

559.705.1000

**Kevin Land**

CalDRE #01516541

Executive Managing Director

kevin@centralcacommercial.com

559.705.1000

**Central CA Commercial**

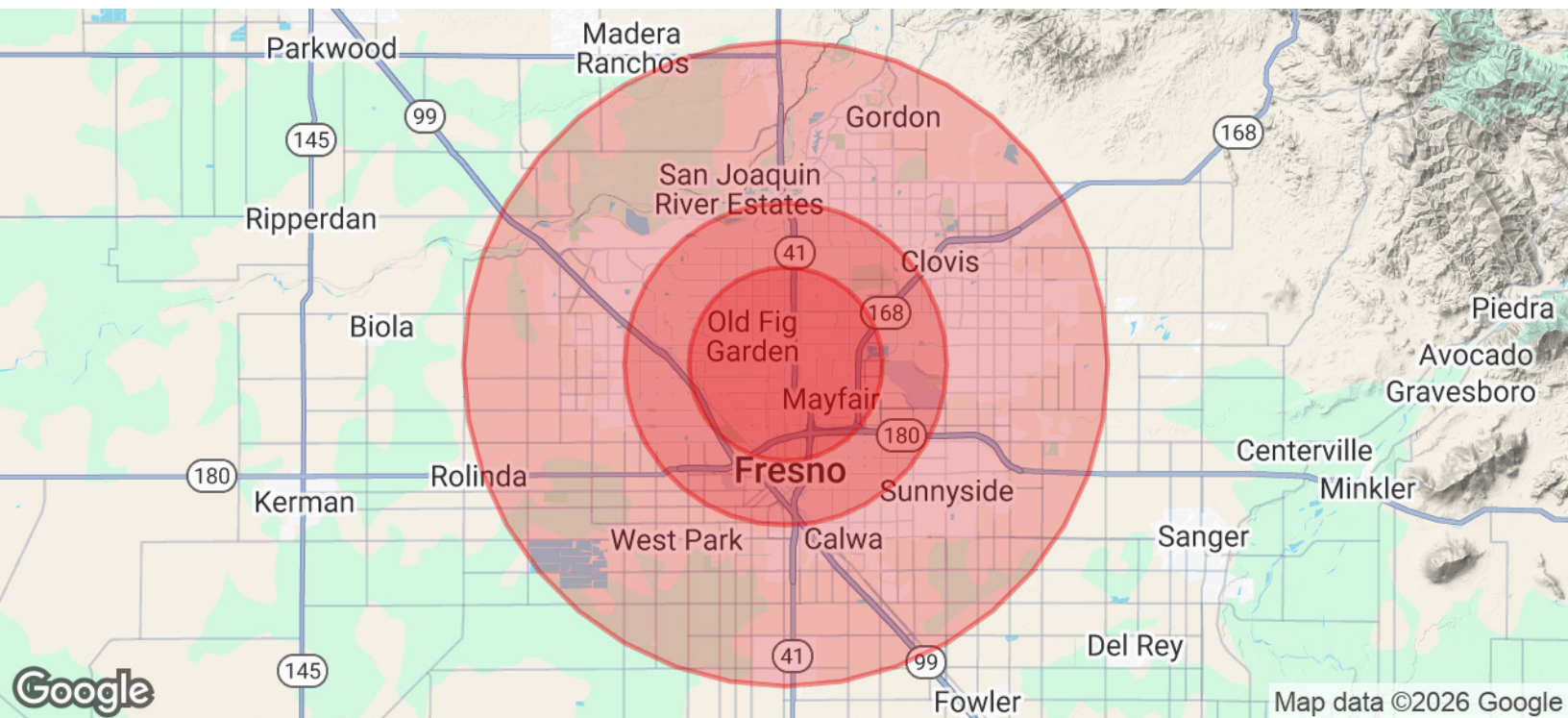
Investments | Industrial | Office

Multifamily | Retail | Land | Specialty

**CentralCaCommercial.com**

We obtained the information above from sources we believe to be reliable. However, we have not verified its accuracy and make no guarantee, warranty or representation about it. It is submitted subject to the possibility of errors, omissions, change of price, rental or other conditions, prior sale, lease or financing, or withdrawal without notice. We include projections, opinions, assumptions or estimates for example only, and they may not represent current or future performance of the property. You and your tax and legal advisors should conduct your own investigation of the property and transaction.



**±2,282 - ±10,683 Shopping Center Spaces in Fresno****POPULATION****3 MILES****5 MILES****10 MILES**

Total Population	177,889	398,647	745,363
Average Age	36	36	37
Average Age (Male)	35	35	36
Average Age (Female)	37	37	38

**HOUSEHOLDS & INCOME****3 MILES****5 MILES****10 MILES**

Total Households	61,013	135,581	246,022
# of Persons per HH	2.9	2.9	3
Average HH Income	\$69,972	\$72,739	\$97,631
Average House Value	\$310,011	\$334,416	\$412,302

**ETHNICITY (%)****3 MILES****5 MILES****10 MILES**

Hispanic	59.3%	57.4%	49.3%
----------	-------	-------	-------

**Jared Ennis**

CalDRE #01945284

Executive Vice President

jared@centralcacommercial.com

559.705.1000

**Kevin Land**

CalDRE #01516541

Executive Managing Director

kevin@centralcacommercial.com

559.705.1000

**Central CA Commercial**

Investments | Industrial | Office

Multifamily | Retail | Land | Specialty

**CentralCaCommercial.com**

We obtained the information above from sources we believe to be reliable. However, we have not verified its accuracy and make no guarantee, warranty or representation about it. It is submitted subject to the possibility of errors, omissions, change of price, rental or other conditions, prior sale, lease or financing, or withdrawal without notice. We include projections, opinions, assumptions or estimates for example only, and they may not represent current or future performance of the property. You and your tax and legal advisors should conduct your own investigation of the property and transaction.