

**FOR SALE** | 1515 E Main Street, Yukon



## ABOUT THE PROPERTY



**PRICE**

\$2,750,000



**ACRES**

14



**ZONING**

CH

**LISTING PRICE** **\$2,750,000**

## Highlights

- Prime land along Route 66 near turnpike
- 17,000-24,000 daily traffic count
- 4 minutes from Kilpatrick Turnpike
- Strong frontage on Route 66
- High intensity development opportunity
- City-supported redevelopment potential
- Close to major retailers
- Growing Yukon trade area
- Few remaining large development sites in area
- Access to local and regional traffic
- Sits on border of OKC/Yukon city limits
- 20 minutes to Will Rogers International Airport

Positioned along one of Yukon's primary commercial corridors, 1515 E Main Street presents a rare 14.5± acre redevelopment opportunity in one of the fastest-growing communities in the Oklahoma City metro.



**Ryan Motsinger** |

405.513.1299

[ryan@solasre.com](mailto:ryan@solasre.com)

**Richie Bean** |

405.664.1646

[richie@solasre.com](mailto:richie@solasre.com)

**Aaron Hanes** |

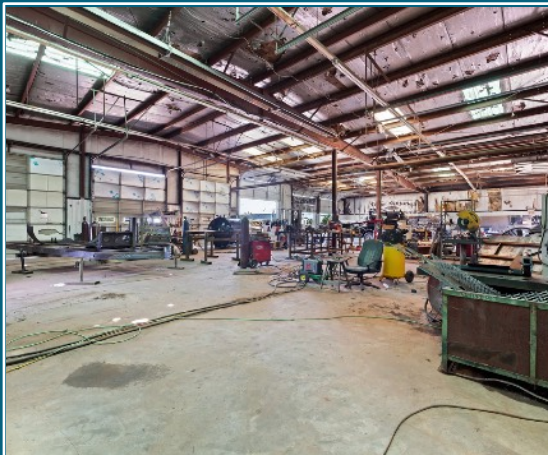
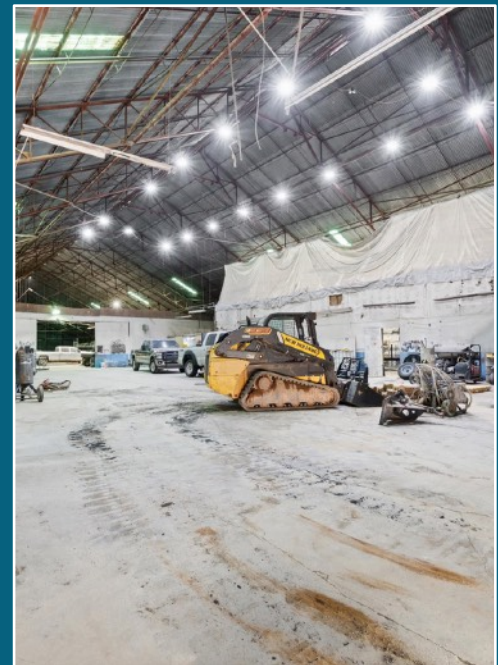
405.820.1313

[aaron@solasre.com](mailto:aaron@solasre.com)

20 NW 13th St  
#101  
OKC, OK 73103  
405.856.0000

FOR SALE

1515 E Main Street, Yukon



For more information:

Ryan Motsinger  
405-513-1299  
ryan@solasre.com

Richie Bean  
405-664-1646  
richie@solasre.com

Aaron Hanes  
405-820-1313  
aaron@solasre.com



# Prime Main Street Development

1515 East Main, YUKON

## DEMOGRAPHICS



## KEY FACTS

2025 SUMMARY	1 MILE	3 MILES	5 MILES
Population	11,628	39,050	120,681
Households	4,049	14,156	44,651
Avg Household Size	2.6	2.46	2.5
Median Age	37.5	36	35.2
Median Household Income	\$75,000	\$80,429	\$74,713

 120,681  
POPULATION

 35.2  
MEDIAN AGE

 2.7  
AVG. HOUSEHOLD SIZE

 \$74,713  
Median Household Income

24,000  
DAILY TRAFFIC COUNT

For more information:

Richie Bean  
405-664-1646  
richie@solasre.com

Ryan Motsinger  
405-513-1299  
ryan@solasre.com

Aaron Hanes  
405-820-1313  
aaron@solasre.com

