

510 River Street (SR 528)

.80± Acre Vacant Land - Zoned B4, Highway Business

Madison Village, Ohio 44057 (Lake County)



Property Features:

- .80± Acre of Vacant Land
- Zoned B-4, Highway Business
- All Utilities at the Site
- 125± Feet Frontage on River Street (SR 528)
- Outstanding Growing Area with New Business Sheetz
Meyer's Mentor RV
Great Lakes Power
Love's Travel Stop with Arby's
- Easy Access to Interstate 90 - North West Quad and State Route 84
- Great Location to Many Wineries

Call for Pricing

Contact:
Neil Sawicki, SIOR, Broker
440-255-5552 x13 Office
440-339-8585 Cell
Neil@GlobalCommercialRE.com



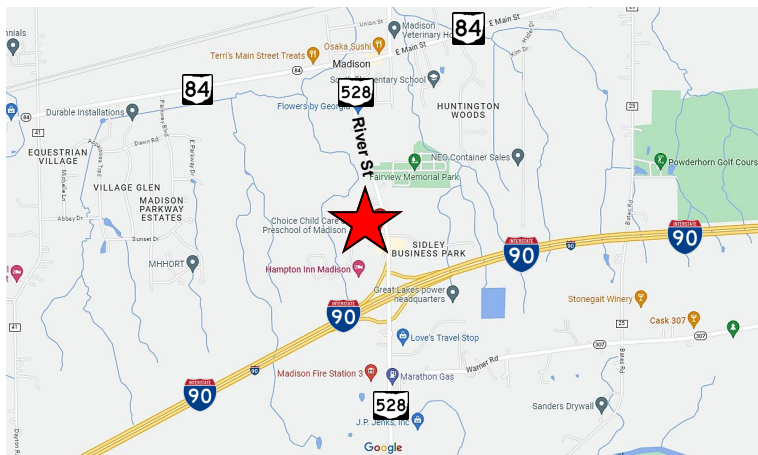
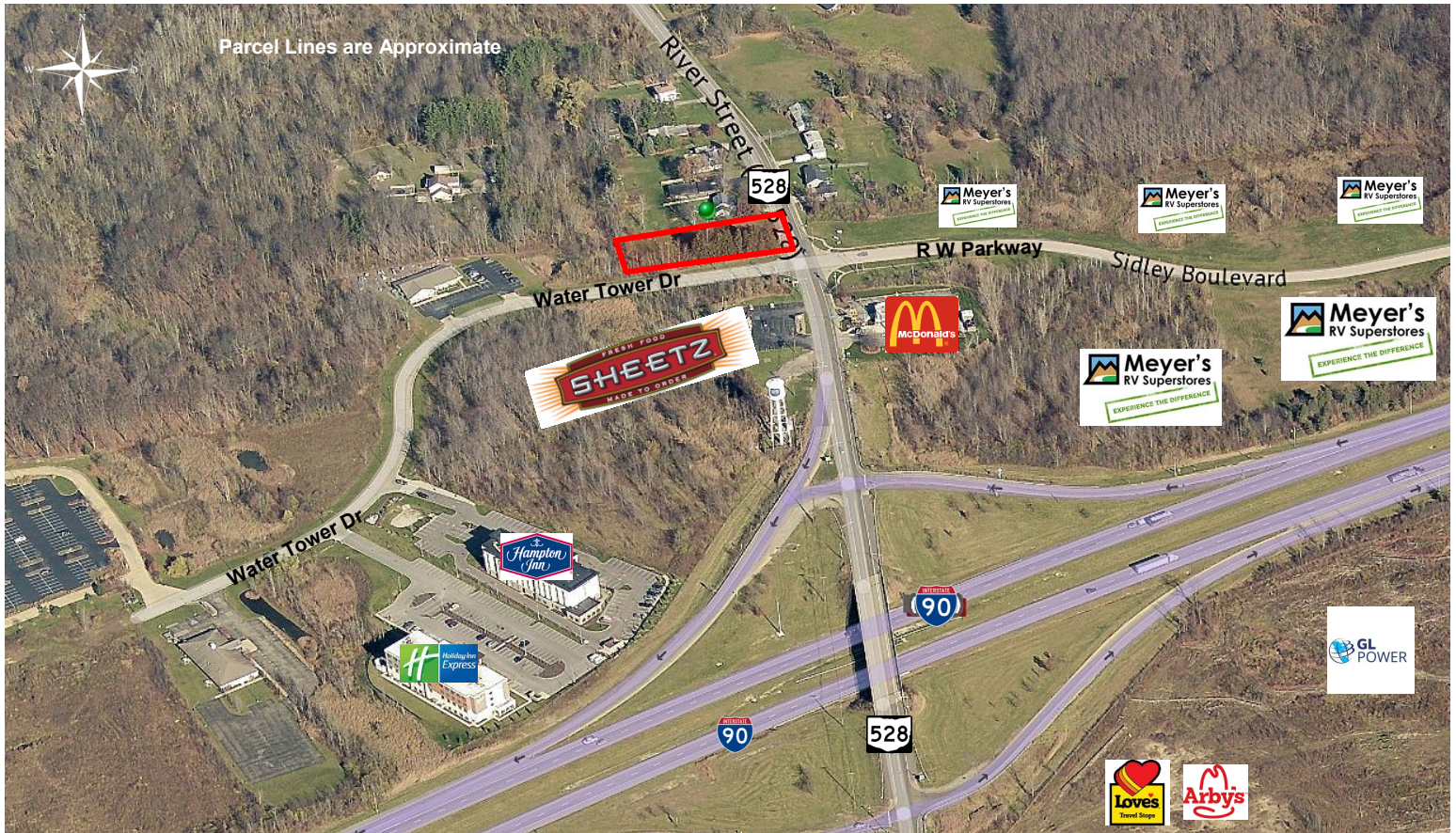
GLOBAL

Real Estate Advisors Inc.
Broker
www.GlobalCommercialRE.com
440-255-5552

This information has been secured from sources we believe are reliable, but we make no representations or warranties, expressed or implied, as to the accuracy of the information. References to condition, square footage or age are approximate. Buyer or Tenant acknowledges that they are relying on their own investigations and are not relying on Broker provided information. Procuring broker shall only be entitled to a commission, calculated in accordance with the rates approved by our principal only if such procuring broker executes a brokerage agreement acceptable to us and our principal and the conditions as set forth in the brokerage agreement are fully and unconditionally satisfied. Although all information furnished regarding property for sale, rental, or financing is from sources deemed reliable, such information has not been verified and no express representation is made nor is any to be implied as to the accuracy thereof and it is submitted subject to errors, omissions, change of price, rental or other conditions, prior sale, lease or financing, or withdrawal without notice and to any special conditions imposed by our principal.

510 River Street (SR 528)

.80± Acre Vacant Land - Zoned B4, Highway Business Madison Village, Ohio 44057 (Lake County)



Call for Additional information

Contact:
Neil Sawicki, SIOR, Broker
440-255-5552 x13 Office
440-339-8585 Cell
Neil@GlobalCommercialRE.com



GLOBAL

Real Estate Advisors Inc.
Broker
www.GlobalCommercialRE.com
440-255-5552

This information has been secured from sources we believe are reliable, but we make no representations or warranties, expressed or implied, as to the accuracy of the information. References to condition, square footage or age are approximate. Buyer or Tenant acknowledges that they are relying on their own investigations and are not relying on Broker provided information. Procuring broker shall only be entitled to a commission, calculated in accordance with the rates approved by our principal only if such procuring broker executes a brokerage agreement acceptable to us and our principal and the conditions as set forth in the brokerage agreement are fully and unconditionally satisfied. Although all information furnished regarding property for sale, rental, or financing is from sources deemed reliable, such information has not been verified and no express representation is made nor is any to be implied as to the accuracy thereof and it is submitted subject to errors, omissions, change of price, rental or other conditions, prior sale, lease or financing, or withdrawal without notice and to any special conditions imposed by our principal.