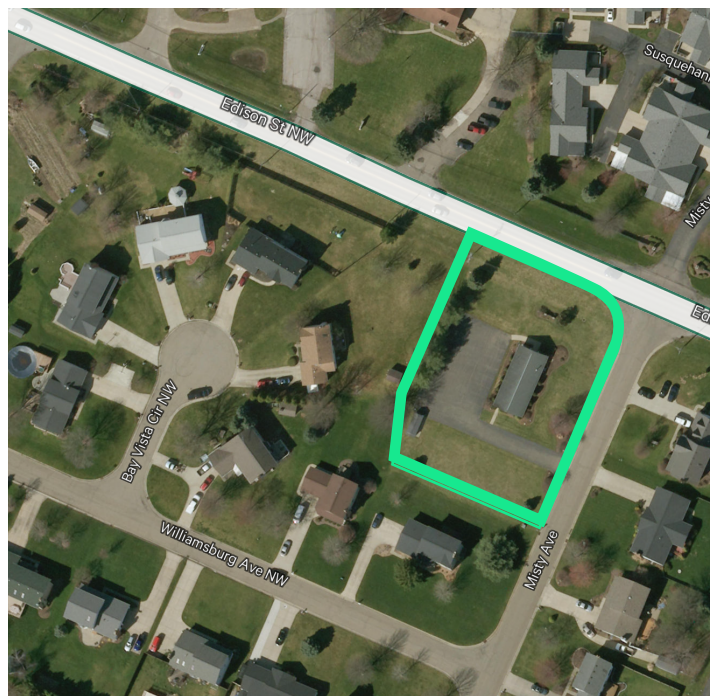


# Versatile Opportunity

12385 Misty Ave NW,  
Uniontown, OH 44685



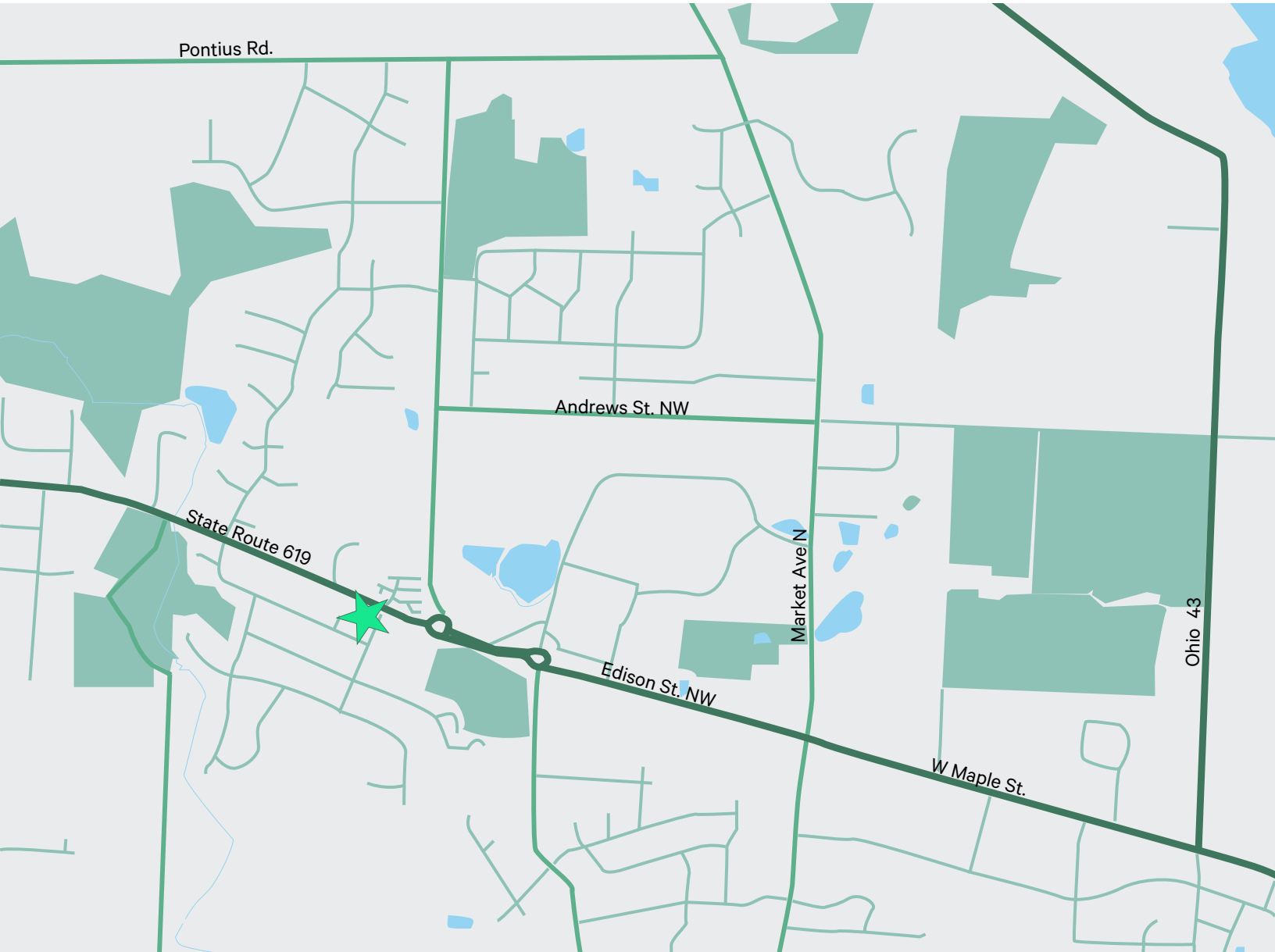
Asking Price \$99,000





Versatile Opportunity

12385 Misty Ave NW, | Uniontown, Ohio 44685



Demographics 2025	1 Mile	3 Miles	5 Miles	10 Miles
Population	4,639	23,016	56,054	290,635
Daytime Population	3,813	17,685	44,911	285,290
Employed Civilian Population	2,412	11,744	28,695	148,108
Businesses	100	581	1,324	10,079
Employees	1,484	5,387	14,142	139,279
Average Household Income	\$111,869	\$108,641	\$109,068	93,782
Median Household Income	\$101,255	\$89,016	\$85,736	\$70,639

Travel Times

- + 20 Minutes to Ohio 44
- + 15 Minutes to Akron Canton Regional Airport
- + 12 Minutes to State Route 44
- + 10 Minutes to Highway 77
- + 5 Minutes to State Route 619

For Sale

## Property Overview

This well-maintained church building, located at 12385 Misty Ave NW in Uniontown, OH, offers a unique opportunity for both religious organizations and residential developers. Situated on a generous .761-acre lot, this property features a 1,508 SF building ready for its next chapter.

### Key Features

- + Zoning: Light Residential
- + Move-In Ready
- + Acres: 0.761
- + Surface Parking Lot
- + Residential development opportunity
- + Convenient Location

# 1,508

Total Square feet

# R1

Zoning



## Contact Us

**Katie Thome**

Senior Associate

+1 330 670 4411

[katie.thome@cbre.com](mailto:katie.thome@cbre.com)

© 2025 CBRE, Inc. All rights reserved. This information has been obtained from sources believed reliable, but has not been verified for accuracy or completeness. You should conduct a careful, independent investigation of the property and verify all information. Any reliance on this information is solely at your own risk. CBRE and the CBRE logo are service marks of CBRE, Inc. All other marks displayed on this document are the property of their respective owners, and the use of such logos does not imply any affiliation with or endorsement of CBRE. Photos herein are the property of their respective owners. Use of these images without the express written consent of the owner is prohibited.

# CBRE