

**For  
Lease**



# Edgewood Executive Suites

JUST OFF I-40 AND ROUTE 66



3 George Ct. | Edgewood, NM 87015

**±144 - 576 SF Available**

**NA SunVista** ] **Got Space™**

Opening the Door to Commercial Real Estate Excellence

**Melody Torres**

melody@sunvista.com | 505 280 2839

# For Lease

3 George Ct. | Edgewood, NM 87015



## PROPERTY

### AVAILABLE

- Suite 3-C: Executive Suites
  - Ste. 1: ±144 SF \$500/Mo.
  - Ste. 2: ±144 SF \$500/Mo.
  - Ste. 3: ±144 SF \$500/Mo.
  - Ste. 4: ±144 SF \$500/Mo.

### HIGHLIGHTS

- Charming shopping center located in the heart of Edgewood, a vibrant and growing community
- Excellent space for retail, service, or office
- Situated in a high-traffic area just off I-40, attracting both local and regional/national customers

### ZONING

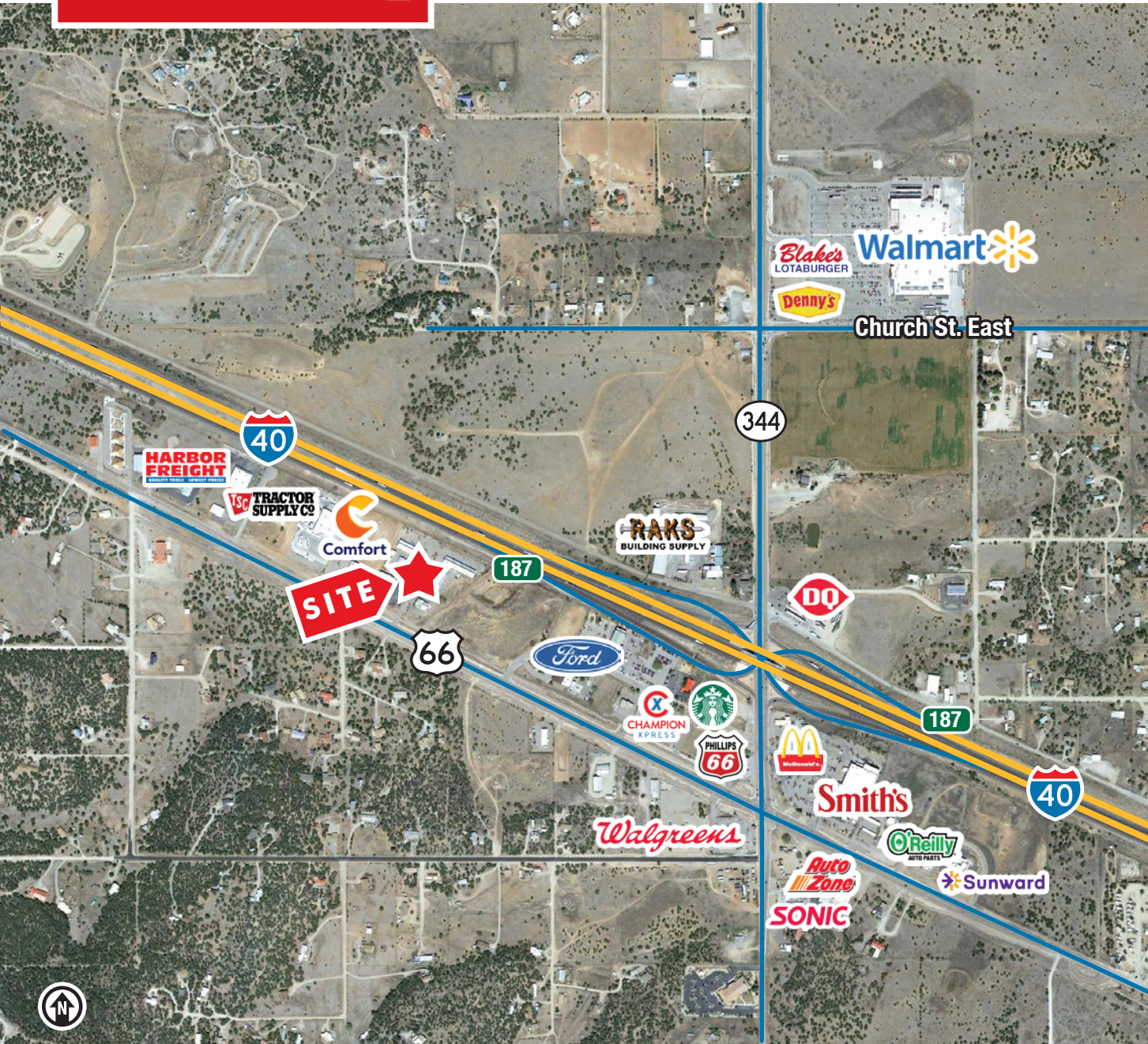
- C-2 Commercial

### LOCATION

SWQ I-40 &  
NM State Hwy. 344

**For Lease**

3 George Ct. | Edgewood, NM 87015



**LOCATION**

Demographics	5 Mile	10 Mile	15 Mile
Total Population	11,675	28,346	39,108
Average HH Income	\$97,665	\$101,492	\$105,528
Daytime Employment	1,814	3,731	5,781

2024 Forecasted by Esri

