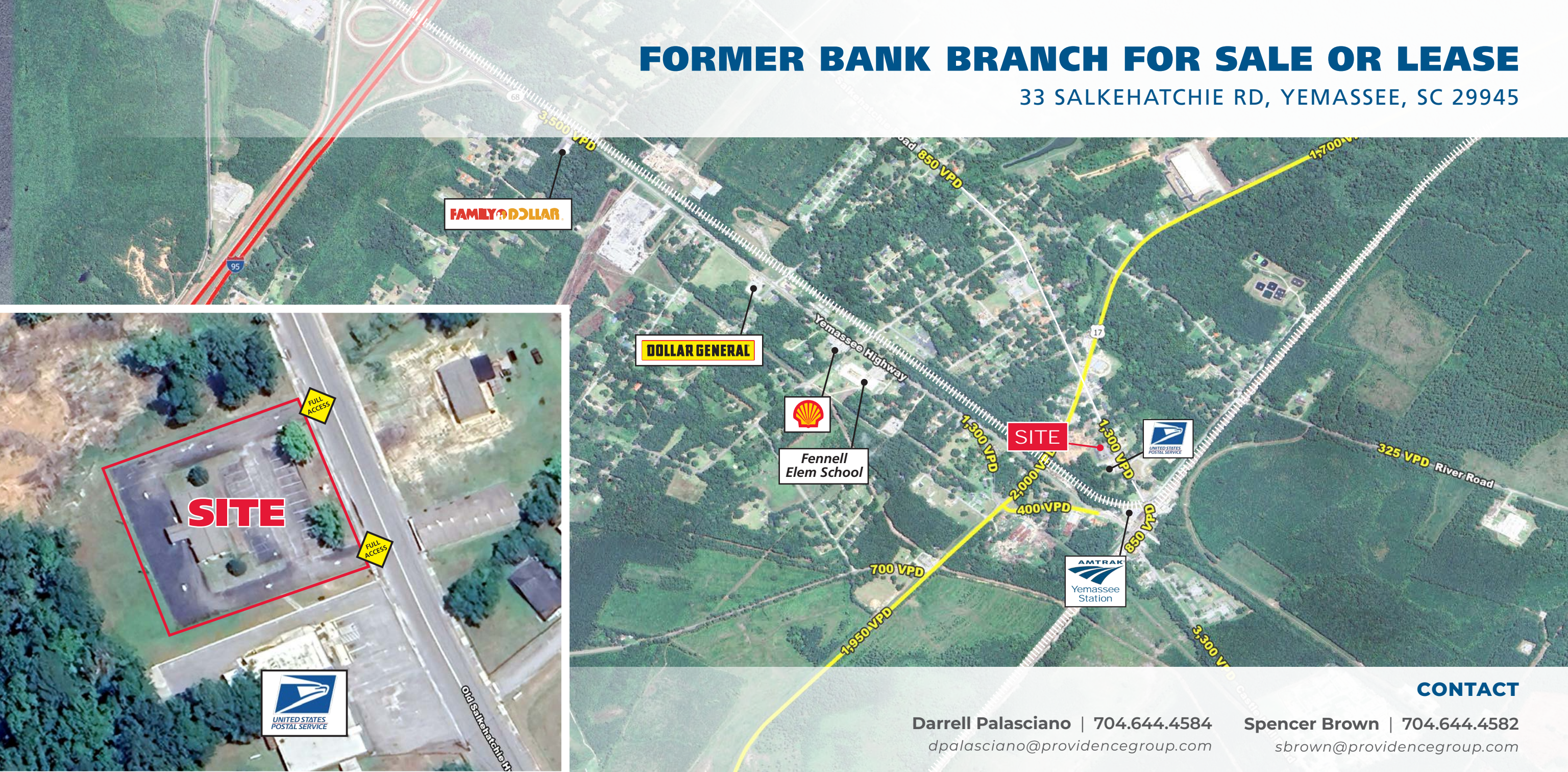


FORMER BANK BRANCH FOR SALE OR LEASE

33 SALKEHATCHIE RD, YEMASSEE, SC 29945



CONTACT

Darrell Palasciano | 704.644.4584
dpalasciano@providencegroup.com

Spencer Brown | 704.644.4582
sbrown@providencegroup.com

FORMER BANK BRANCH FOR SALE OR LEASE

33 SALKEHATCHIE RD, YEMASSEE, SC 29945

PROPERTY / LEASING INFO

Acres: +/- 3.31

Sq Ft: +/- 1,677

Drive-thru available

Dedicated pylon sign

21 parking spaces

PROPERTY HIGHLIGHTS

- Property available for sale, lease or BTS
- Large amount of excess land available for development
- 1/4 mi from the local Amtrak station



CONTACT

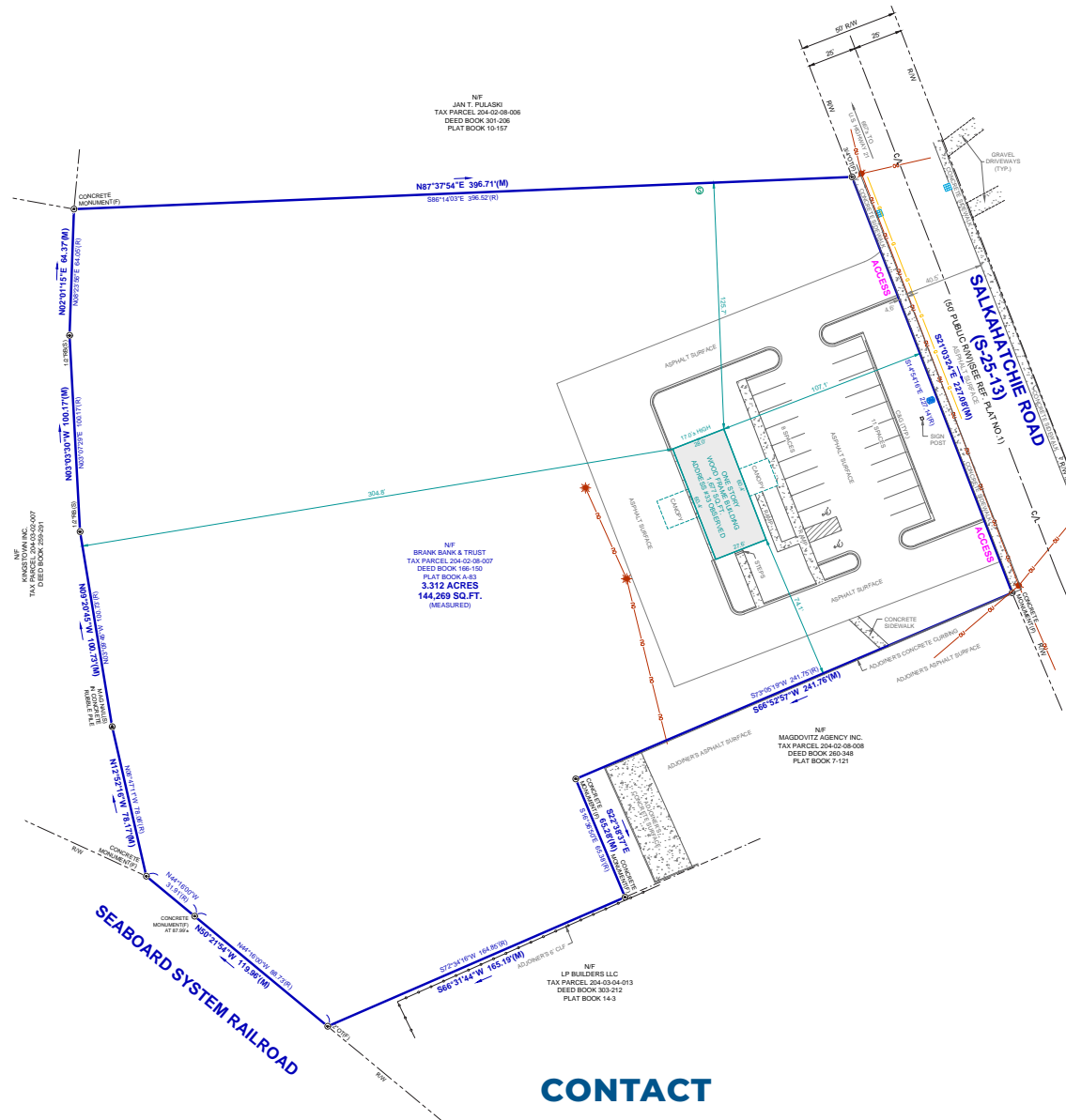
Spencer Brown | 704.644.4582
sbrown@providencegroup.com

Darrell Palasciano | 704.644.4584
dpalasciano@providencegroup.com

© 2024 The Providence Group. All rights reserved. The information above has been obtained by sources deemed reliable. While we do not doubt its accuracy, we have not verified it and make no guarantee, warranty, or representation of it. It is your responsibility to independently confirm its accuracy and completeness. You and your advisors should conduct a careful, independent investigation of the property to determine to your satisfaction the suitability of the property for your needs.

FORMER BANK BRANCH FOR SALE OR LEASE

33 SALKEHATCHIE RD, YEMASSEE, SC 29945



536
ESTIMATED #
HOUSEHOLDS*

49
TOTAL #
BUSINESSES*

43.6%
WHITE COLLAR
WORKERS*

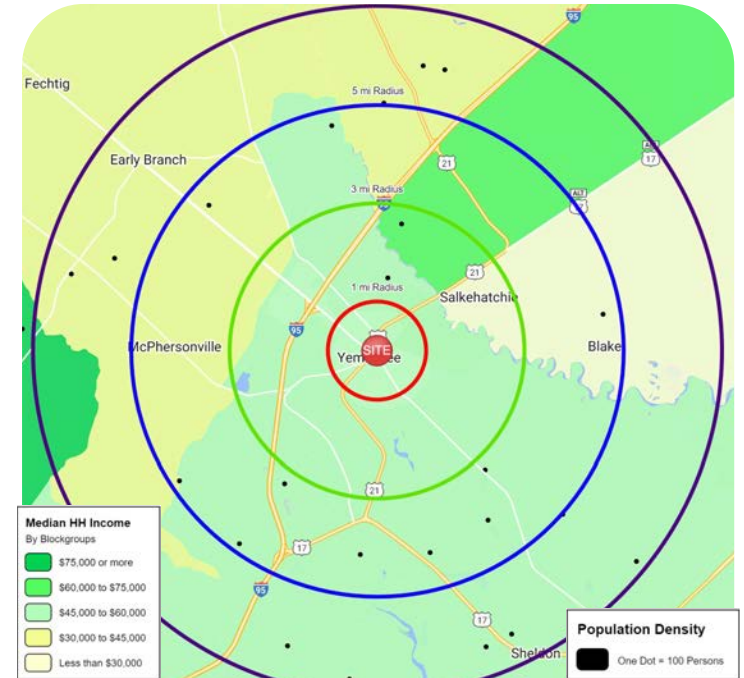
56.4%
BLUE COLLAR
WORKERS*

16.6%
BACHELOR/
GRAD DEGREE*

\$717,256
ESTIMATED AVERAGE
HH NET WORTH*

\$1,997
MONTHLY RETAIL
EXPENDITURE*

* = WITHIN A 3-MILE RADIUS



2024 DEMOGRAPHICS

	1 MILE	3 MILE	5 MILE	7 MILE
POPULATION	746	1,294	2,250	3,608
AVERAGE HH INCOME	\$71,546	\$70,887	\$66,741	\$68,429
DAYTIME EMPLOYMENT	131	272	416	631

CONTACT

Spencer Brown | 704.644.4582
sbrown@providencegroup.com

Darrell Palasciano | 704.644.4584
dpalasciano@providencegroup.com

© 2024 The Providence Group. All rights reserved. The information above has been obtained by sources deemed reliable. While we do not doubt its accuracy, we have not verified it and make no guarantee, warranty, or representation of it. It is your responsibility to independently confirm its accuracy and completeness. You and your advisors should conduct a careful, independent investigation of the property to determine to your satisfaction the suitability of the property for your needs.

