

5159

LONE TREE WAY
ANTIOCH, CALIFORNIA



FOR SALE | 1,498 RSF OFFICE/MEDICAL CONDO

Alex Peck
apeck@lee-associates.com
D 925.239.1414

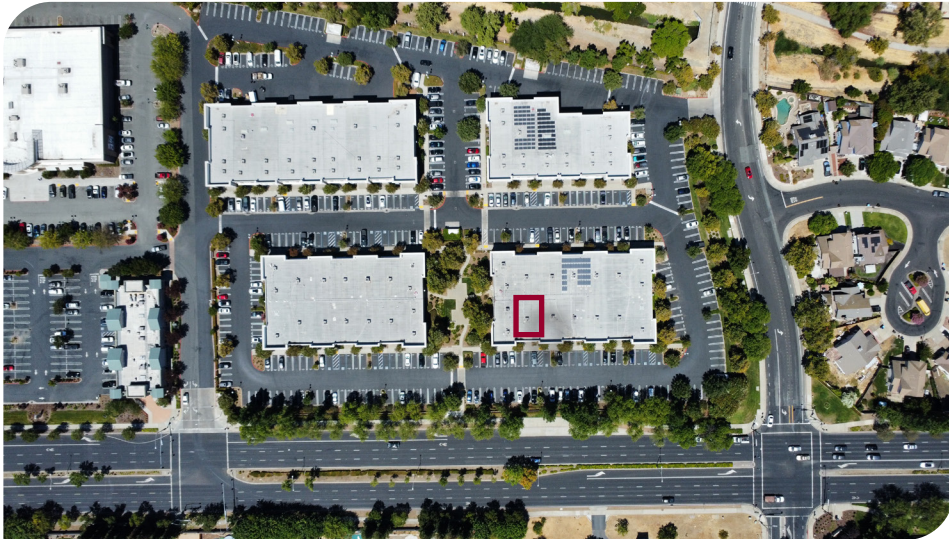
Tanner Mandelaris
tmandelaris@lee-associates.com
D 925.239.1421

LEE & ASSOCIATES
COMMERCIAL REAL ESTATE SERVICES

All information furnished regarding property for sale, rental or financing is from sources deemed reliable, but no warranty or representation is made to the accuracy thereof and same is submitted to errors, omissions, change of price, rental or other conditions prior to sale, lease or financing or withdrawal without notice. No liability of any kind is to be imposed on the broker herein.

1,498 RSF OFFICE / MEDICAL CONDO

5159 LONE TREE WAY, ANTIOCH



PROPERTY HIGHLIGHTS

- 1,498 RSF Office/Medical Condo
- Reception
- Open Area
- Four (4) Private Offices
- Breakroom
- ADA Restroom
- Sprinklered
- Four (4) Reserved Parking Stalls + Open Parking
- HOA Maintained

LOCATION HIGHLIGHTS

- Easy Access to CA-4 (3-Minute Drive / 0.7 Miles)
- Lone Tree Way Signage/Frontage (24,393 Cars/Day)
- East Antioch location caters to Antioch, Brentwood, and Oakley

ECONOMIC DATA

Asking Price: \$562,000

PRESENTED BY:

Alex Peck
apeck@lee-associates.com
D 925.239.1414

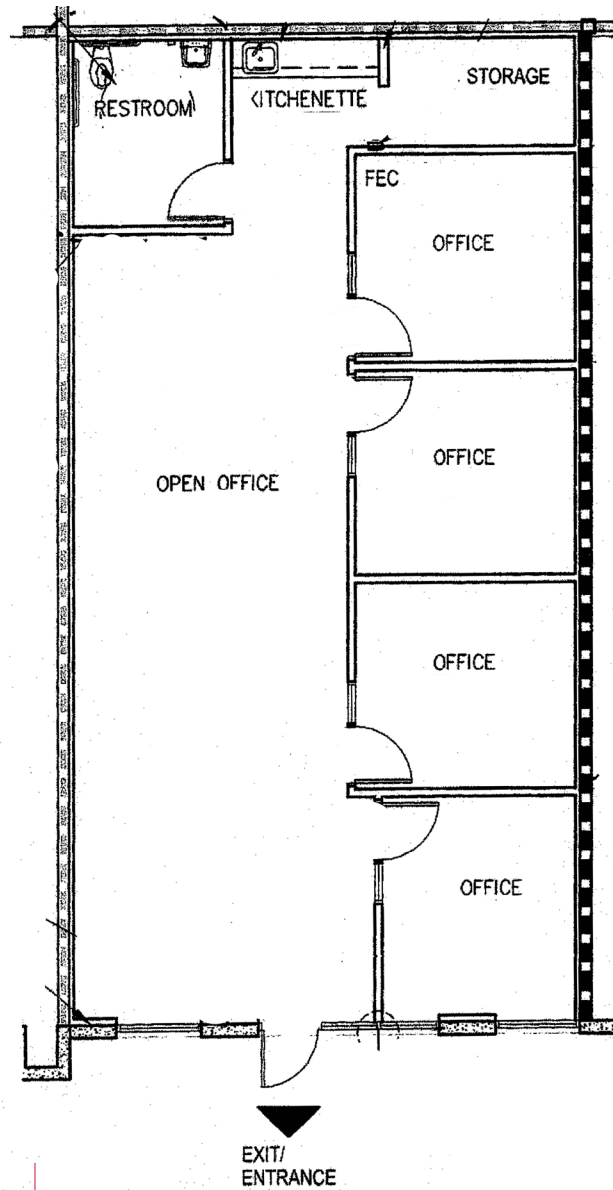
Tanner Mandelaris
tmandelaris@lee-associates.com
D 925.239.1421



1,498 RSF OFFICE / MEDICAL CONDO

5159 LONE TREE WAY, ANTIOCH

FLOOR PLAN: 1,498 RSF



PRESENTED BY:

Alex Peck
apeck@lee-associates.com
D 925.239.1414

Tanner Mandelaris
tmandelaris@lee-associates.com
D 925.239.1421

1,498 RSF OFFICE / MEDICAL CONDO

5159 LONE TREE WAY, ANTIOCH

INTERIOR PHOTOS



PRESENTED BY:

Alex Peck
apeck@lee-associates.com
D 925.239.1414

Tanner Mandelaris
tmandelaris@lee-associates.com
D 925.239.1421

1,498 RSF OFFICE / MEDICAL CONDO

5159 LONE TREE WAY, ANTIOCH

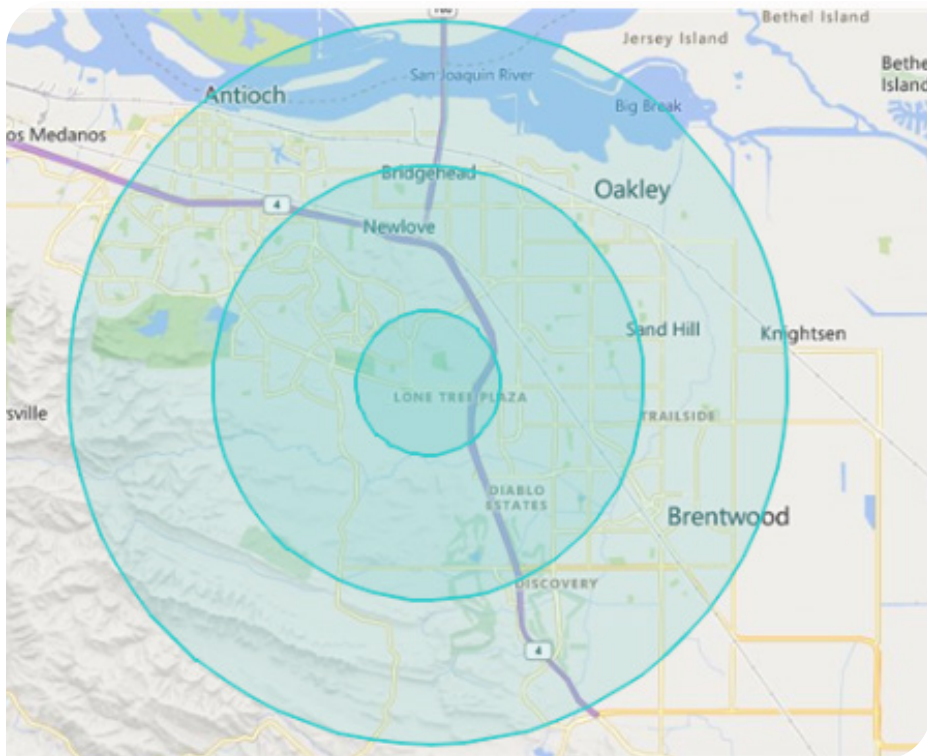
LOCATION OVERVIEW AND NEARBY AMENITIES:









1,498 RSF OFFICE / MEDICAL CONDO

5159 LONE TREE WAY, ANTIOCH

DEMOGRAPHICS:



		1 MILE	3 MILES	5 MILES
	POPULATION	17,313	98,657	210,308
	MEDIAN AGE	34	38	39
	AVERAGE HOUSEHOLD INCOME	\$151,717	\$151,096	\$136,635
	AVERAGE HOUSEHOLDS	5,197	30,892	68,861
	TOTAL ESTABLISHMENTS	73	1,186	3,139
	TOTAL CONSUMER SPENDING	\$426 M	\$2.59 B	\$5.54 B

PRESENTED BY:

Alex Peck
apeck@lee-associates.com
D 925.239.1414

Tanner Mandelaris
tmandelaris@lee-associates.com
D 925.239.1421

*Demographics source: Landvision

