

FOR SALE

4601 BALL GROUND HIGHWAY
BALL GROUND, GA 30107

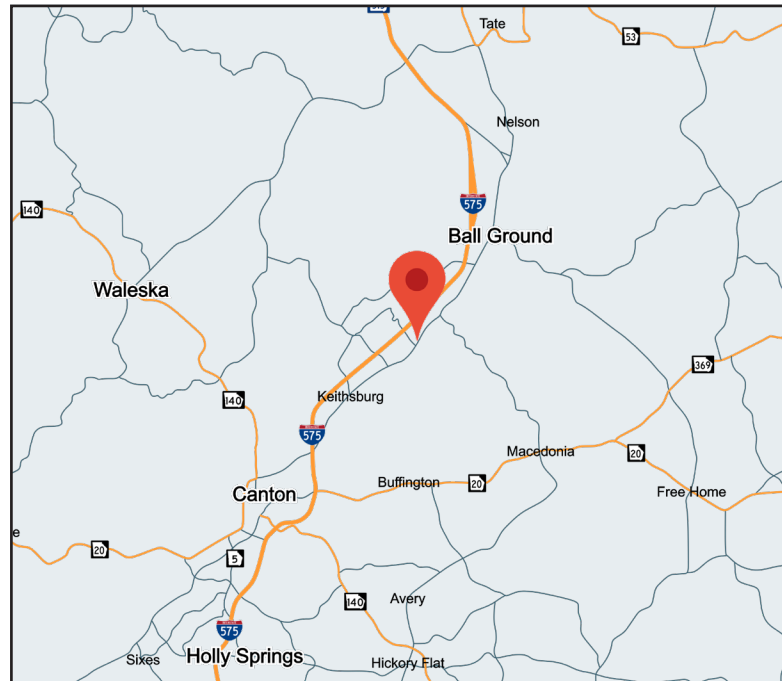
INDUSTRIAL LAND

**+/-4.6
ACRES**

BALL GROUND HWY

PROPERTY INFORMATION

- +/-4.6 Acres Industrial Land
- Cherokee County Municipality
 - Parcel # 14N26045
- Light Industrial Zoning
- Located in an established industrial pocket of I-575/Cherokee County off Exit 24 / Airport Drive
- Close proximity to many major North Georgia transportation arteries:
 - +/-0.7 miles I-575 (Exit 24/Airport Dr)
 - +/-6 miles to SR 20
 - +/-10 miles to SR 369
- Proposed +/-15,000 SF Industrial Building Plans included



Hughes Commercial Real Estate, Inc.
8215 Roswell Road, Building 700
Atlanta, GA 30350
770-559-1099 | hughes-cre.com

Cade McDonald

404-307-5166

cade@hughes-cre.com

All information contained herein is believed to be accurate but is not warranted. This offer is subject to errors, omissions, prior sale or withdrawal.

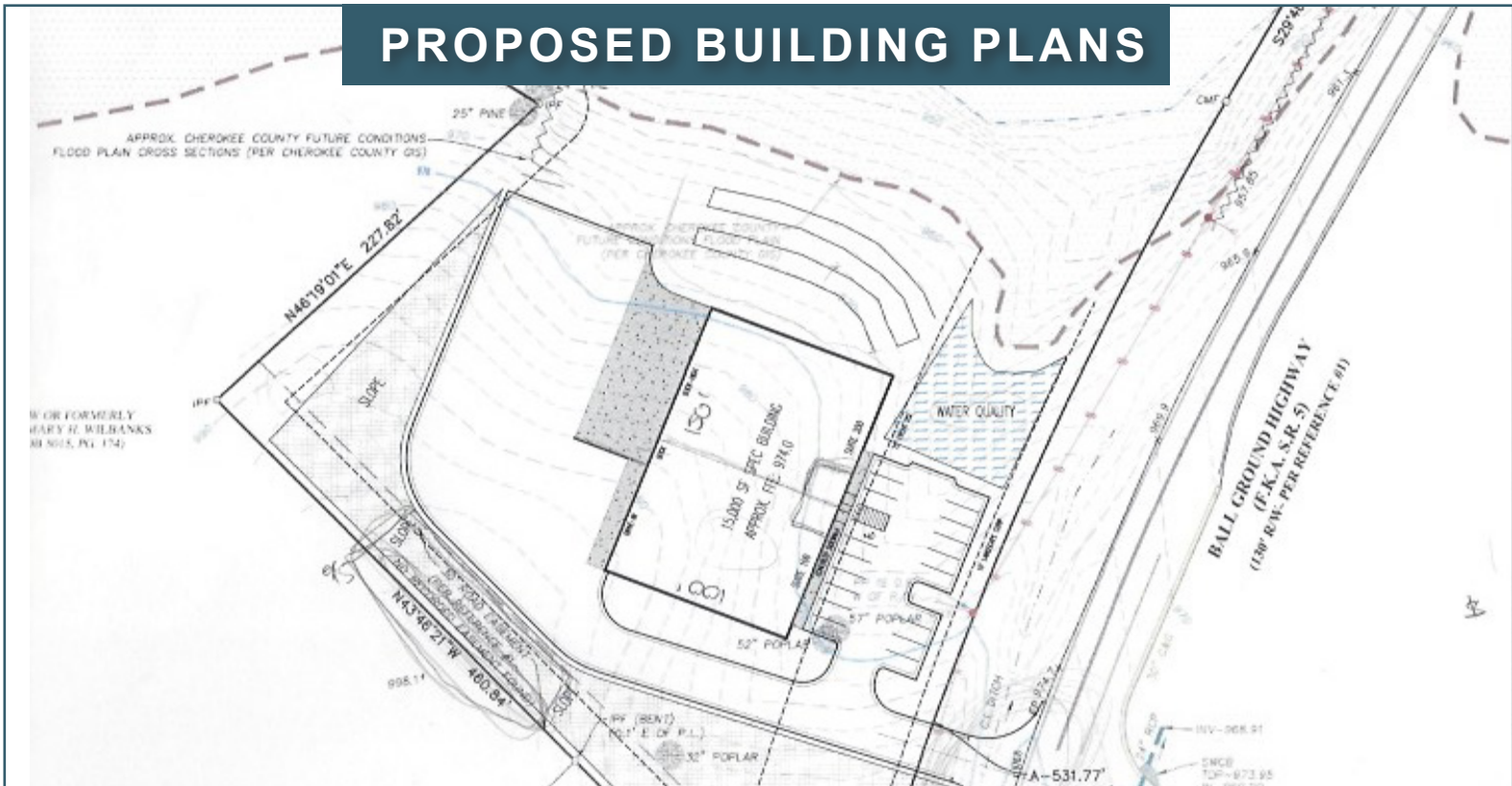
FOR SALE

4601 BALL GROUND HIGHWAY
BALL GROUND, GA 30107

LOCATION



PROPOSED BUILDING PLANS



Hughes Commercial Real Estate, Inc.
8215 Roswell Road, Building 700
Atlanta, GA 30350
770-559-1099 | hughes-cre.com

Cade McDonald

404-307-5166

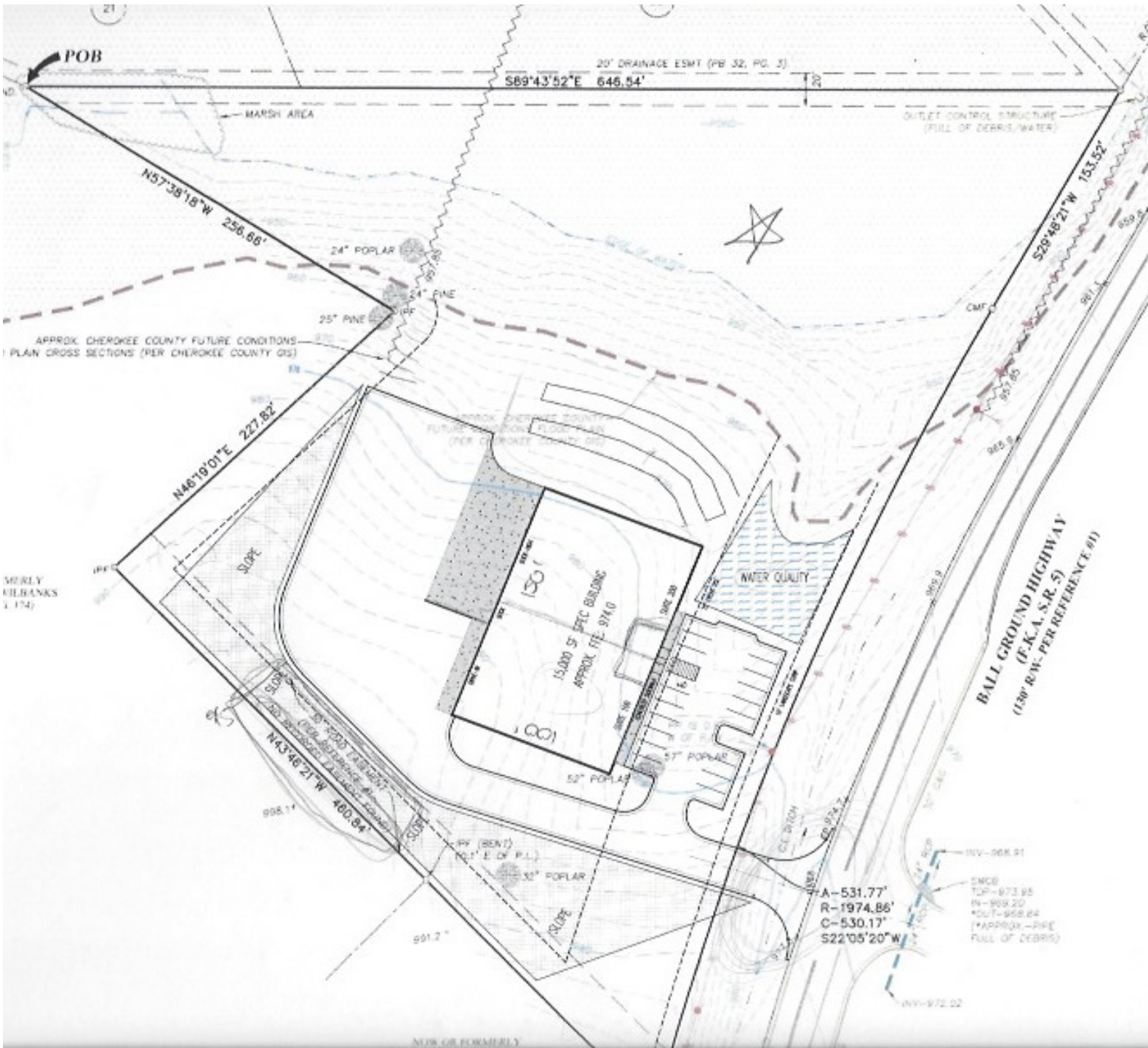
cade@hughes-cre.com

All information contained herein is believed to be accurate but is not warranted. This offer is subject to errors, omissions, prior sale or withdrawal.

FOR SALE

4601 BALL GROUND HIGHWAY
BALL GROUND, GA 30107

PROPOSED BUILDING SITE PLAN



Hughes Commercial Real Estate, Inc.
8215 Roswell Road, Building 700
Atlanta, GA 30350
770-559-1099 | hughes-cre.com

Cade McDonald
404-307-5166
cade@hughes-cre.com

All information contained herein is believed to be accurate but is not warranted. This offer is subject to errors, omissions, prior sale or withdrawal.