

FOR SALE

NOW AVAILABLE

FREESTANDING OFFICE BUILDING ON MONTCLAIR RD.

900 Montclair Rd
Birmingham, AL 35213

BUILDING SIZE 20,320 SF

SITE SIZE 1.4 AC

SALE PRICE: \$2,700,000

PRICE PER SF: \$132.00

PROPERTY HIGHLIGHTS

- Prominent road frontage with monument sign visible from Montclair Road
- Sixty-nine (69) parking spaces
 - Twenty-seven (27) covered parking spaces
 - Forty-two (42) surface level parking spaces
- Convenient access to I-20 and US-280
- Located at the signalized intersection of Montclair Road and 52nd Street South
- Situated in a dense commercial and residential area close to Mountain Brook, Downtown, and the Birmingham International Airport
- The surrounding area is one of the highest income per capita in the USA



Information deemed reliable; not guaranteed.

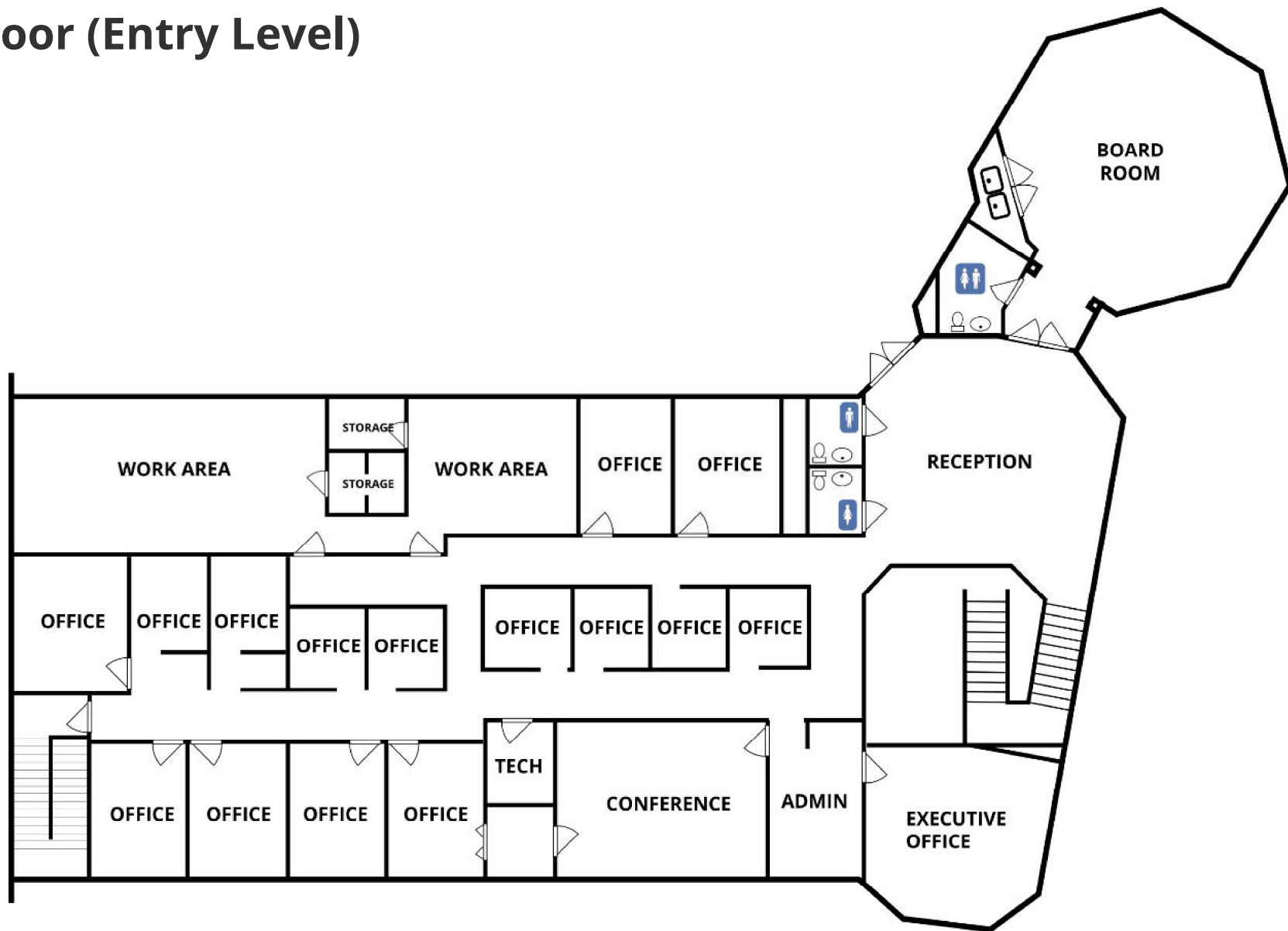
DAN LOVELL, SIOR, LEED AP
danl@grahamcompany.com
205.871.7100

MATT GILCHRIST, SIOR
mattg@grahamcompany.com
205.871.7100

205.871.7100
GrahamCompany.com



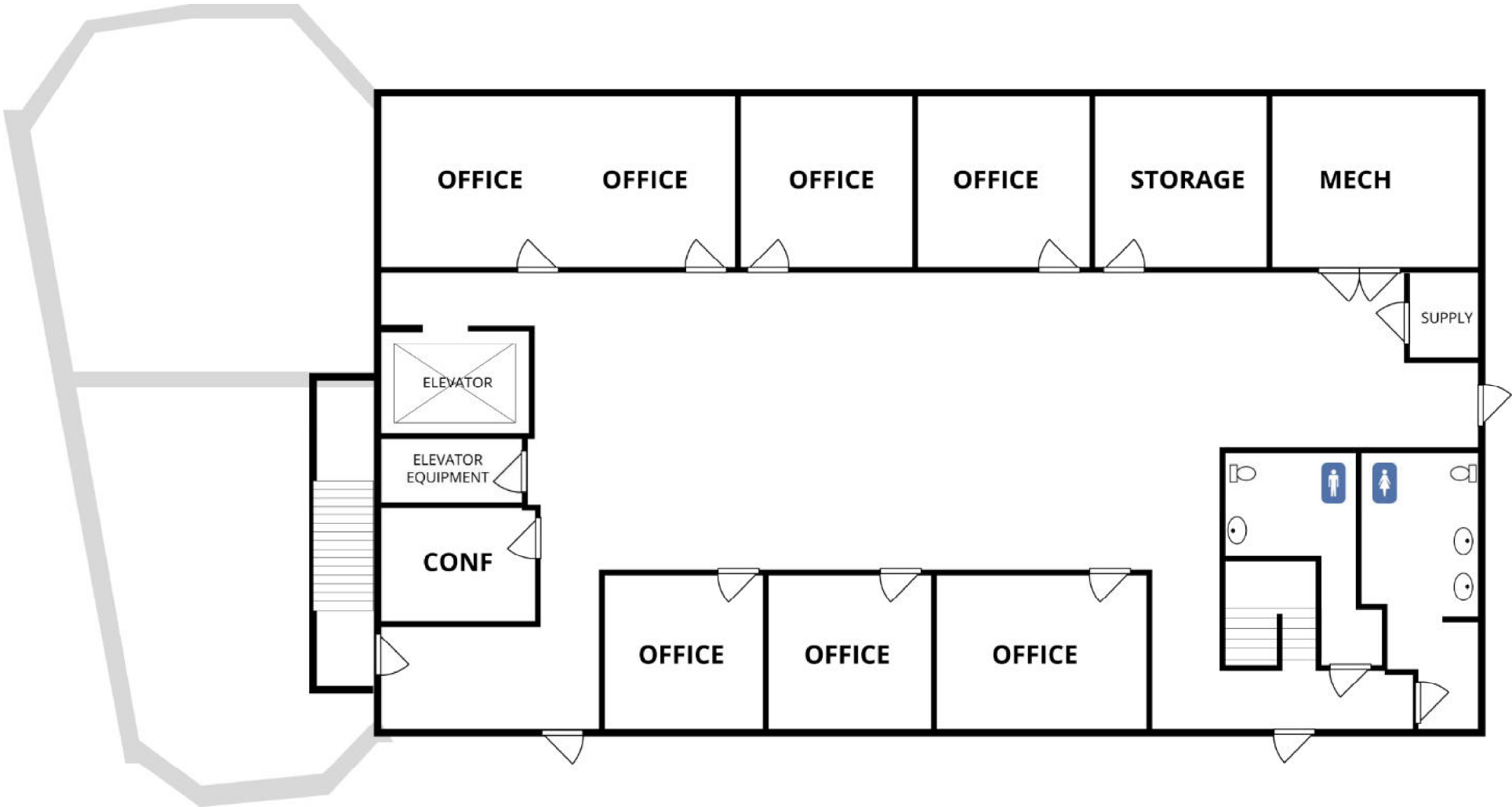
2nd Floor (Entry Level)

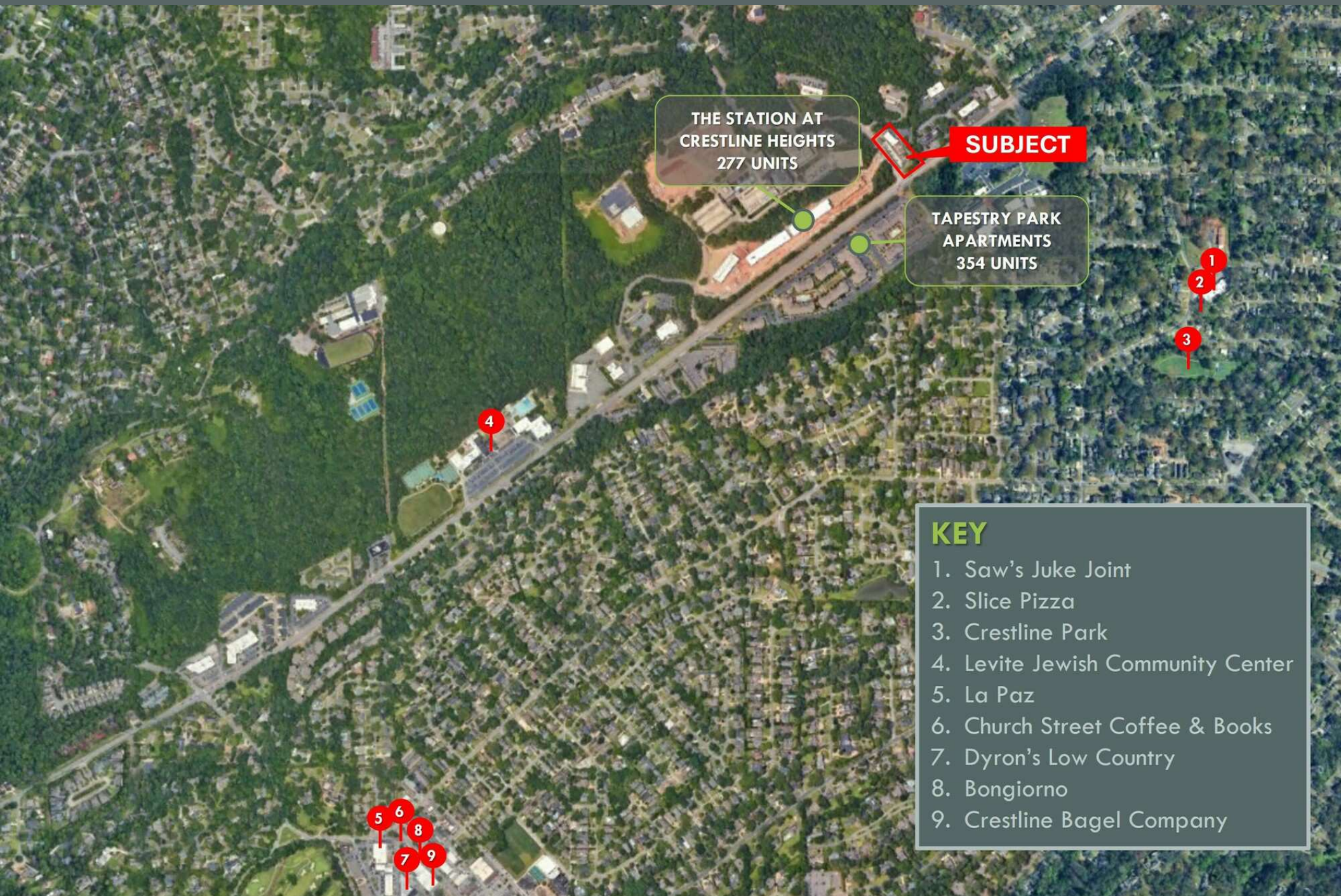


1st Floor



Ground Floor





THE STATION AT
CRESTLINE HEIGHTS
277 UNITS

SUBJECT

TAPESTRY PARK
APARTMENTS
354 UNITS

KEY

1. Saw's Juke Joint
2. Slice Pizza
3. Crestline Park
4. Levite Jewish Community Center
5. La Paz
6. Church Street Coffee & Books
7. Dyron's Low Country
8. Bongiorno
9. Crestline Bagel Company

