

# PARK CENTRE @Telecom Park



For Lease

13008 Telecom Drive | Tampa, Florida 33637

12,211 RSF Available (Will Subdivide!)

Class A Office Space | 4.8 per 1,000 SF Parking

Call for Rates



Accelerating success.

# Building Information

**Total Building Size** | 84,976 RSF

Dark fiber available for unlimited bandwidth & hackproof security

Location in Telecom Park, a Verizon Smart Park

Building and monument signage available

*Hiring base:*

- » University of South Florida (49,500 students)
- » University of Central Florida (68,000 students)
- » University of Florida (61,000 students)
- » Florida State University (44,500 students)
- » University of Tampa (8,300 students)



## Drive Times



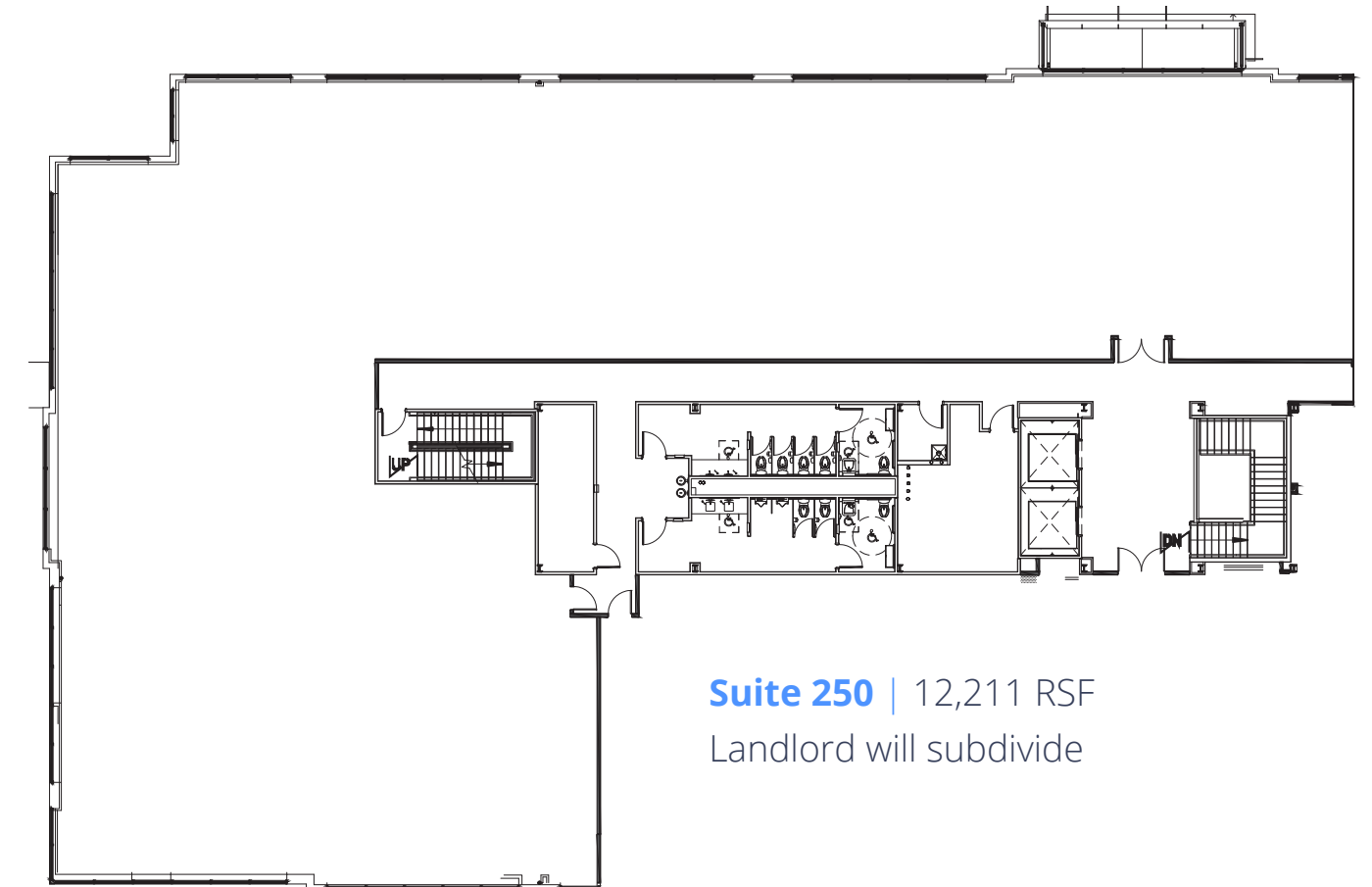
**Tampa International Airport** | 30 minutes

**New Tampa** | 10 minutes

**Downtown Tampa** | 15 minutes

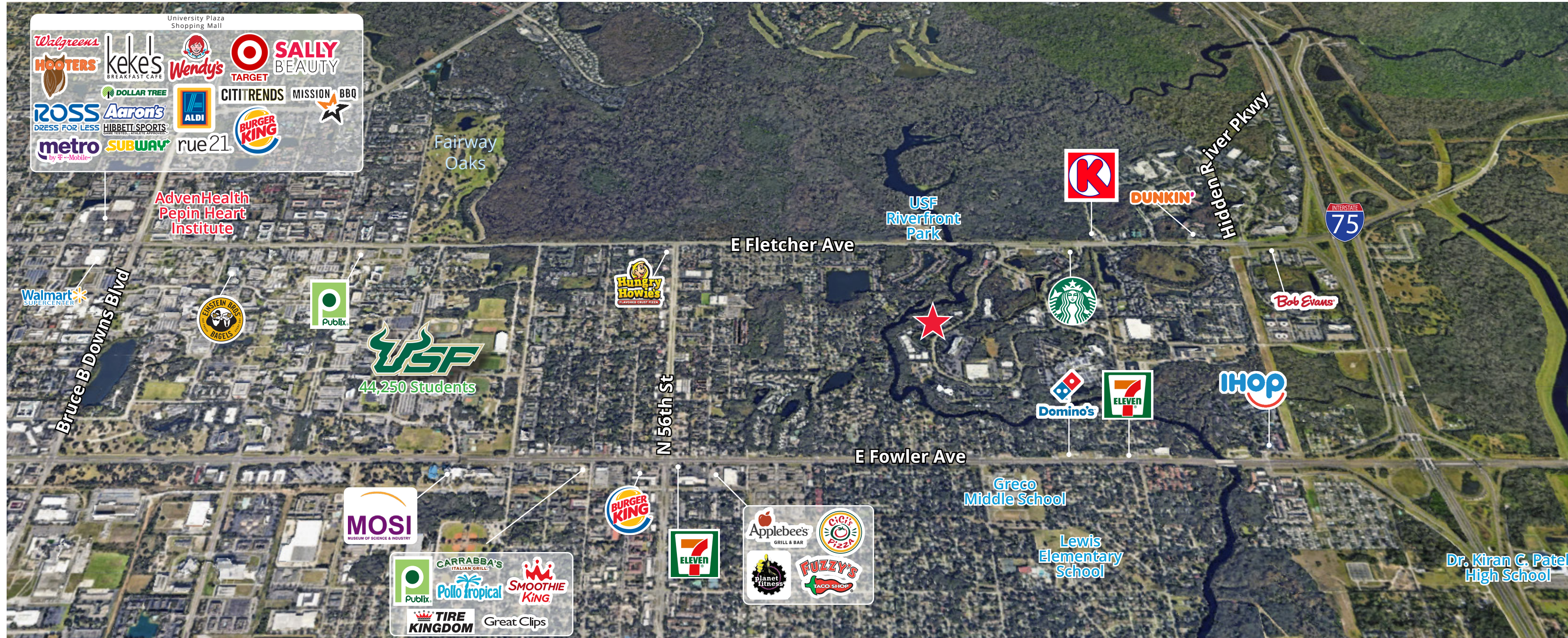
**Brandon** | 20 minutes

Join other company headquarters at Tampa Telecom Park



**Suite 250** | 12,211 RSF  
Landlord will subdivide

# Location & Amenities



207,042  
Population



31.7  
Average Age



\$74,119  
Average Income

3.175 million  
Tampa Bay  
MSA Population

1.536 million  
Hillsborough County  
Population

961,596  
Pinellas County  
Population

632,996  
Pasco County  
Population

\*2024

## Demographics



Accelerating success.

4830 W. Kennedy Blvd.  
Suite 300  
Tampa, FL 33609  
P: +1 813 221 2290

## Contact



**Claire Calzon**  
Sr. Vice President  
Office Services  
+1 813 871 8500  
[claire.calzon@colliers.com](mailto:claire.calzon@colliers.com)



**Ginger Gelsheimer**  
Vice President  
Office Services  
+1 813 871 8504  
[ginger.gelsheimer@colliers.com](mailto:ginger.gelsheimer@colliers.com)