



**FOR LEASE**  
 Retail Space at Dorset Square Mall  
 150 Dorset Street, So. Burlington, VT



Spaces Available:  
 1,300 SF - \$19.00/SF NNN  
 1,800 SF - \$19.00/SF NNN  
 1,840 SF - \$19.00/SF NNN  
 6,564 SF - \$19.00/SF NNN (subdividable)

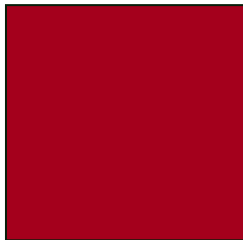
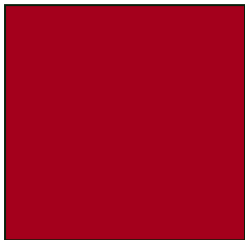
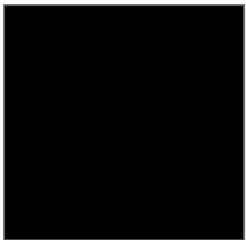
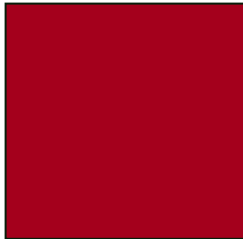
**Estimated CAM/Taxes:**  
**\$9.50/SF**

**FEATURES:**

- Popular strip center with high profile location across from the 600,000 SF University Mall
- 1/4 mile from I-89, Exit 14
- Convenient Central Location
- 200+ parking spaces
- Traffic Count—30,000 + ADT

**Tenants Include:**

Clay's                      Pure Barre  
 UPS Store                Eco Bean & Greens  
 Bueno Y Sano          Sally Beauty



**NAI J.L. Davis Realty**

Commercial Real Estate Services, Worldwide.

The information contained herein has been given to us by the owner of the property or other sources we deem reliable; we have no reason to doubt its accuracy, but we do not guarantee it. All information should be verified prior to purchase or lease.

**Contact Information**

Rick Harrison  
 NAI / J.L. Davis Realty  
 Office (802) 876-6924  
 Cell: 802-238-5326  
 rickh@jldavisrealty.com  
 www.jldavisrealty.com



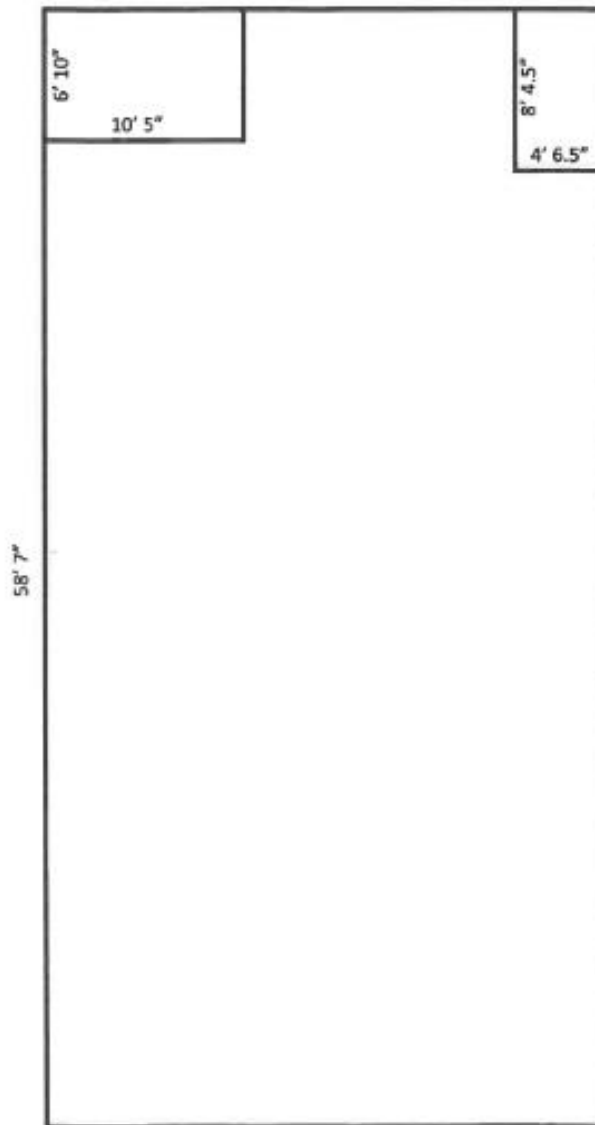


# Dorset Square Mall - 1,840 SF Floor Plan

150 Dorset Street

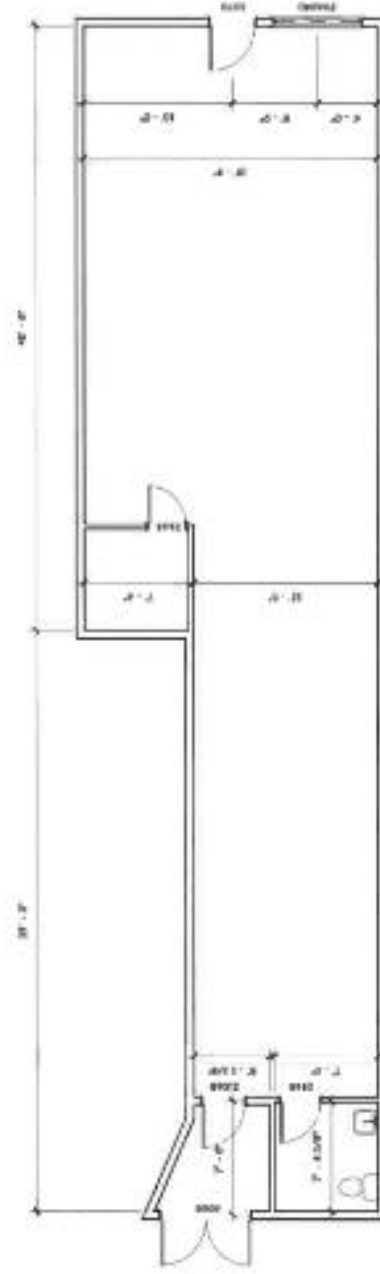
Floor Plan

1,840 SF



Interior Dimensions

# Dorset Square Mall—1,300 SF Floor Plan



① First Floor  
1/8" = 1'-0"

THIS DRAWING IS THE PROPERTY  
OF HANSON DESIGN, LLC AND  
IS NOT TO BE COPIED,  
REPRODUCED OR TRANSMITTED  
IN ANY FORM OR BY ANY  
MEANS, WITHOUT THE WRITTEN  
CONSENT OF HANSON  
DESIGN.



**Suite 253 - Blue Mail**  
South Burlington, VT  
Existing Floorplan

DATE: 10/11/14  
DRAWN BY: JH  
CHECKED BY: JH  
PROJECT: 253

**A100**

FOR REVIEW  
NOT FOR CONSTRUCTION

# Dorset Square Mall—Outback Steakhouse Floor Plan

