



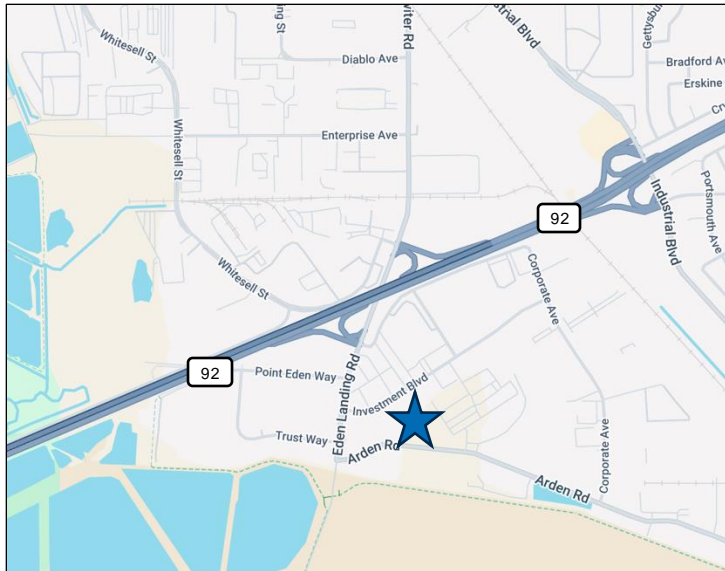
FOR LEASE

Food Processing & Cold Storage

**3524 INVESTMENT BLVD
HAYWARD, CA**

Subject Property

±41,280 SF on ±1.96 AC



Location Highlights

- Zoning: Industrial Park (IP)
- Ingress and Egress via Investment Blvd & Arden Rd
- ±1.5 miles to I-880
- ±0.5 miles to CA-92

Property Highlights

- ±3,000 SF of Office (Additional bonus mezzanine)
- ±24' Clear Height
- 2,000 Amps @ 277/480 (please verify)
- Four (4) Dock Doors
- One (1) Grade-Level Door
- Fully sprinklered (0.37/2,000sf) (please verify)
- ±6,600 SF of Freezer
- ±8,142 SF of Refrigeration
- ±972 SF of Conditioned Processing Area
- Floor Drains Throughout
- Skylights and Solar Panels Throughout

Lease Term

- Available Q1 2025
- Call Brokers for Pricing

For information, please contact:

Paul Mueller, SIOR

Senior Managing Director
CA RE Lic. #00896726
t 510-300-0216
paul.mueller@nmrk.com

Spencer Jenkins

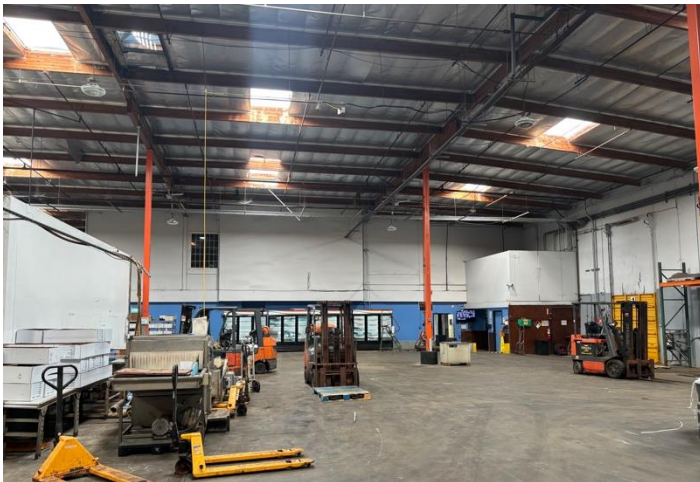
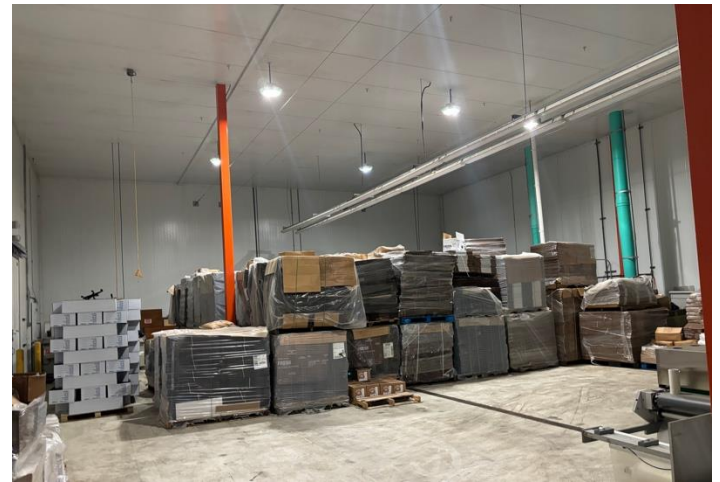
Associate Director
CA RE Lic. #02029699
t 510-300-0350
spencer.jenkins@nmrk.com

1111 Broadway, Suite 100
Oakland, CA 94607

nmrk.com

NEWMARK

The information contained herein has been obtained from sources deemed reliable but has not been verified and no guarantee, warranty or representation, either express or implied, is made with respect to such information. Terms of sale or lease and availability are subject to change or withdrawal without notice.



For information, please contact:

Paul Mueller, SIOR
Senior Managing Director
CA RE Lic. #00896726
t 510-300-0216
paul.mueller@nmrk.com

Spencer Jenkins
Associate Director
CA RE Lic. #02029699
t 510-300-0350
spencer.jenkins@nmrk.com

nmrk.com

NEWMARK

The information contained herein has been obtained from sources deemed reliable but has not been verified and no guarantee, warranty or representation, either express or implied, is made with respect to such information. Terms of sale or lease and availability are subject to change or withdrawal without notice.