

221 INDUSTRIAL DRIVE  
HILLSDALE, MICHIGAN

INDUSTRIAL FOR SALE  
97,486 Square Feet Available



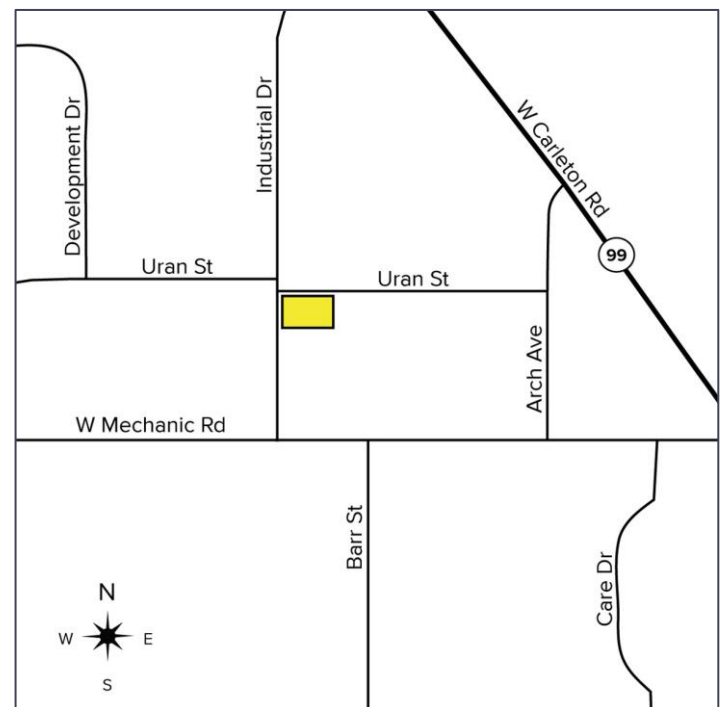
**SIGNATURE  
ASSOCIATES**  
KNOW SIGNATURE | KNOW RESULTS

**PRIMARY POWER**



## PROPERTY FEATURES

- 97,486 square feet
- 6,000 square feet office
- 16' clear height
- (5) truckwells, (2) 12' x 14' grade level doors
- 6000 amps, 480 volts, 3-phase primary power
- Located between Detroit, Chicago, Lansing, Grand Rapids, Toledo, and Fort Wayne
- New heat, and LED lights
- Updated fire suppression system
- Compressor lines throughout
- Rail spur is available within ¼ mile via bulk trailers
- 17,000 square foot short-term tenant may remain or vacate
- Located on 5.24 acres with 250 parking spaces



For more information, please contact:

**JEFF LEMANSKI**  
(248) 359 0641  
jlemanski@signatureassociates.com

**JOE PLASKEY**  
(248) 948 0110  
jplaskey@signatureassociates.com

**SIGNATURE ASSOCIATES**  
One Towne Square, Suite 1200  
Southfield, MI 48076  
www.signatureassociates.com

Information is subject to verification and no liability for errors or omissions is assumed. Price is subject to change and listing withdrawal.

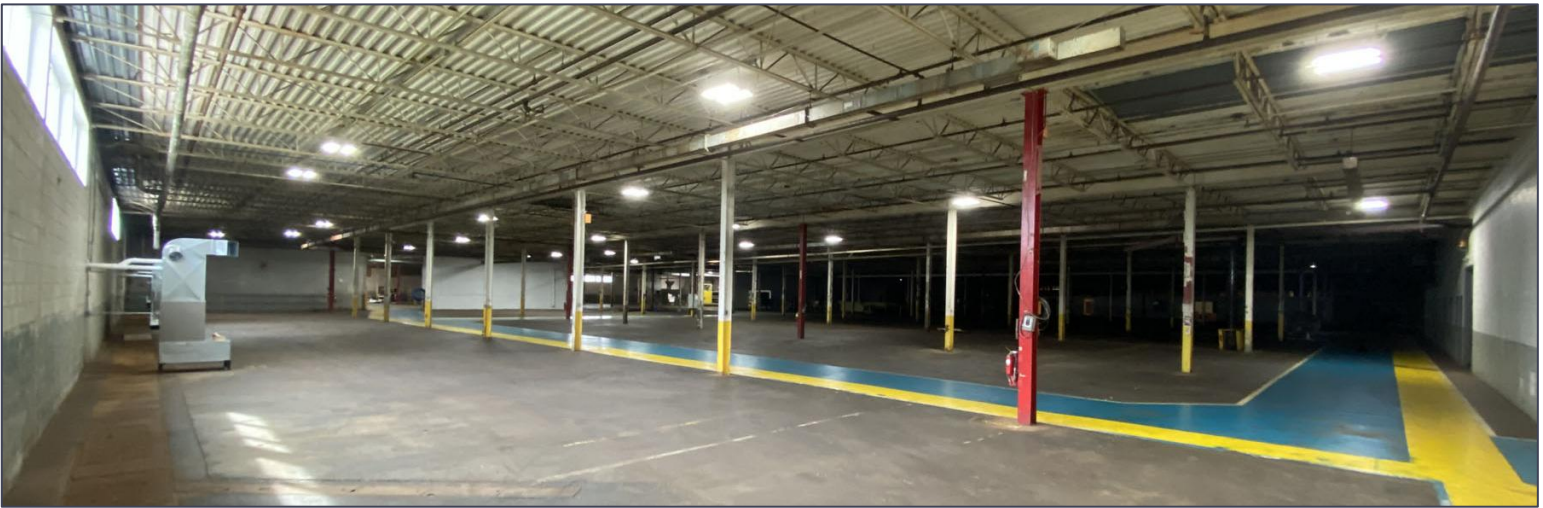
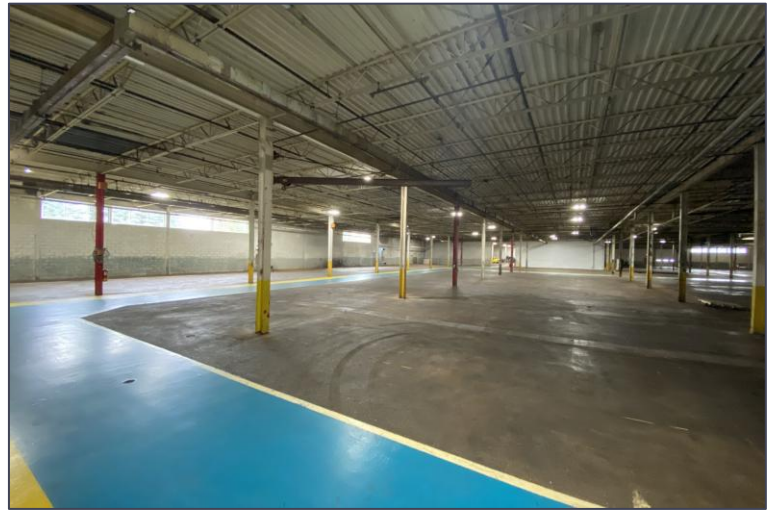
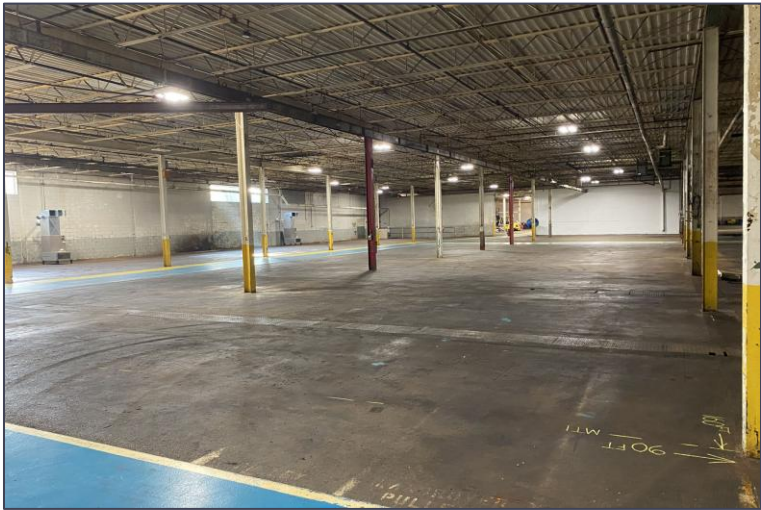
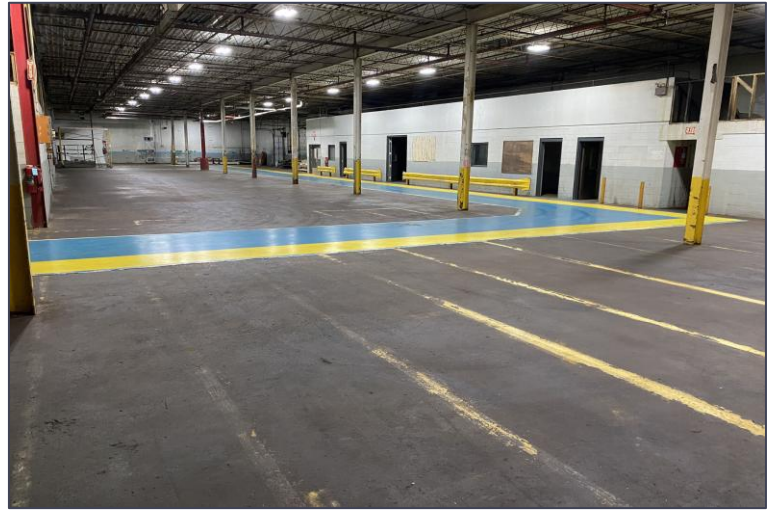
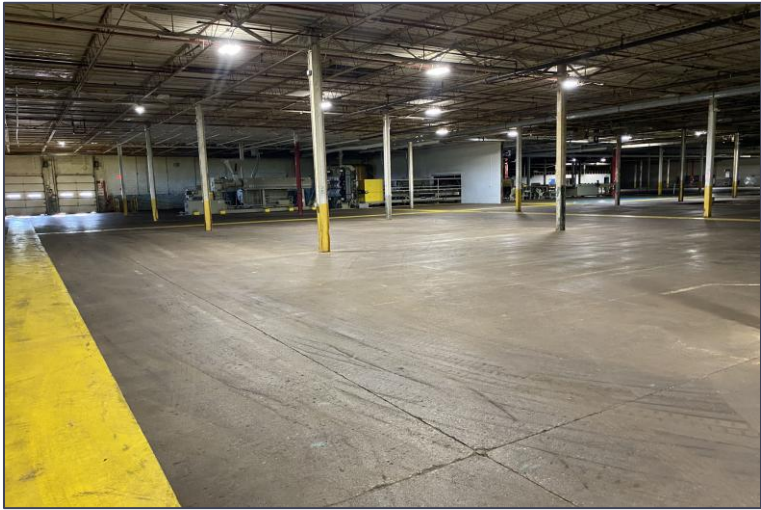


# 221 Industrial Drive – Hillsdale, Michigan

## Industrial For Sale

97,486  
Square Feet  
AVAILABLE

### Interior Photos



For more information, please contact:

**JEFF LEMANSKI**  
(248) 359 0641  
[jlemanski@signatureassociates.com](mailto:jlemanski@signatureassociates.com)

**JOE PLASKEY**  
(248) 948 0110  
[jplaskey@signatureassociates.com](mailto:jplaskey@signatureassociates.com)

**SIGNATURE ASSOCIATES**  
One Towne Square, Suite 1200  
Southfield, MI 48076  
[www.signatureassociates.com](http://www.signatureassociates.com)

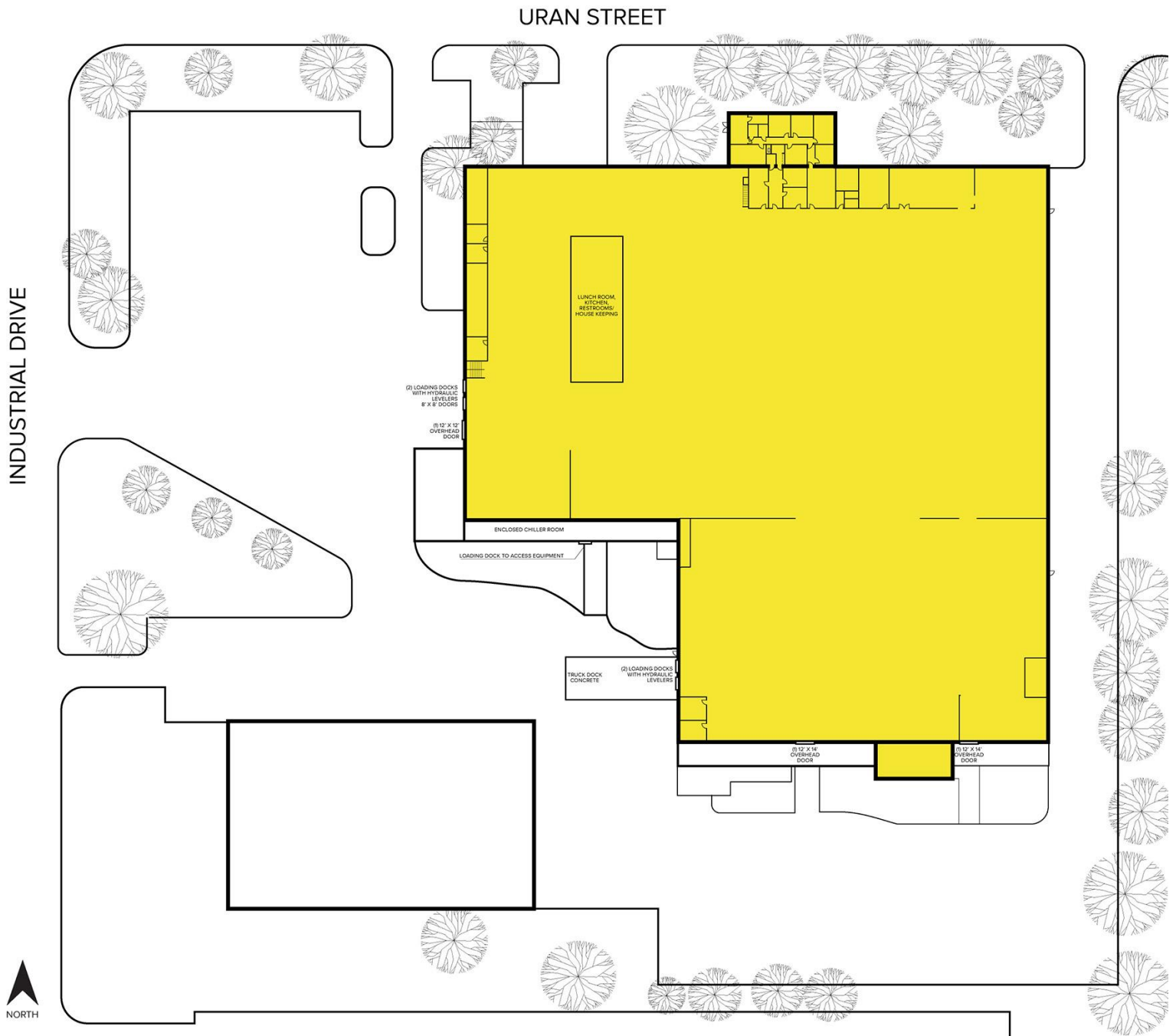
Information is subject to verification and no liability for errors or omissions is assumed. Price is subject to change and listing withdrawal.

# 221 Industrial Drive – Hillsdale, Michigan

## Industrial For Sale

97,486  
Square Feet  
AVAILABLE

### Site Plan



For more information, please contact:

**JEFF LEMANSKI**

(248) 359 0641

[jlemanski@signatureassociates.com](mailto:jlemanski@signatureassociates.com)

**JOE PLASKEY**

(248) 948 0110

[jplaskey@signatureassociates.com](mailto:jplaskey@signatureassociates.com)

**SIGNATURE ASSOCIATES**

One Towne Square, Suite 1200

Southfield, MI 48076

[www.signatureassociates.com](http://www.signatureassociates.com)

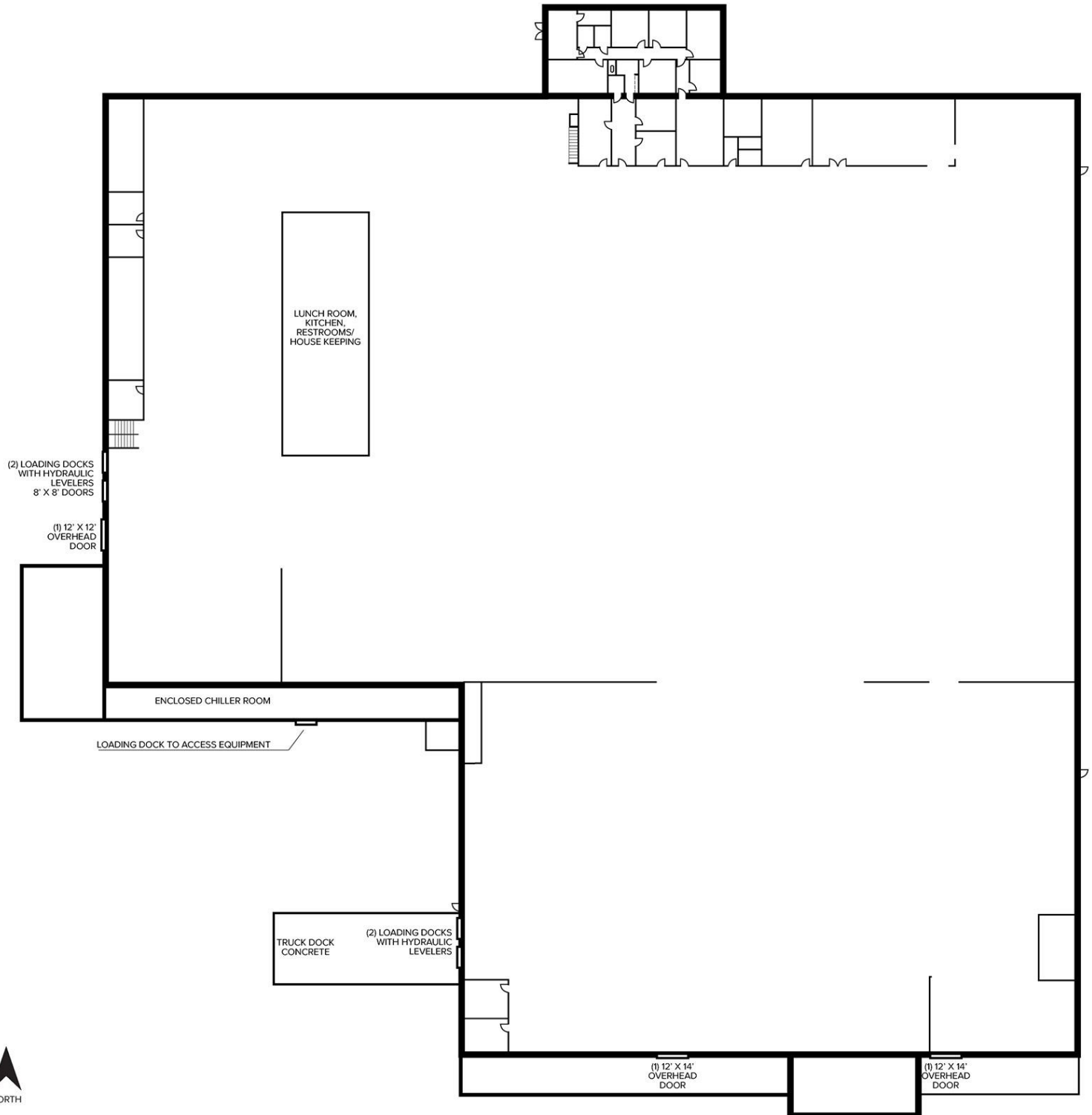
Information is subject to verification and no liability for errors or omissions is assumed. Price is subject to change and listing withdrawal.

# 221 Industrial Drive – Hillsdale, Michigan

## Industrial For Sale

97,486  
Square Feet  
AVAILABLE

### Floor Plan



For more information, please contact:

**JEFF LEMANSKI**  
(248) 359 0641  
jlemanski@signatureassociates.com

**JOE PLASKEY**  
(248) 948 0110  
jplaskey@signatureassociates.com

**SIGNATURE ASSOCIATES**  
One Towne Square, Suite 1200  
Southfield, MI 48076  
www.signatureassociates.com

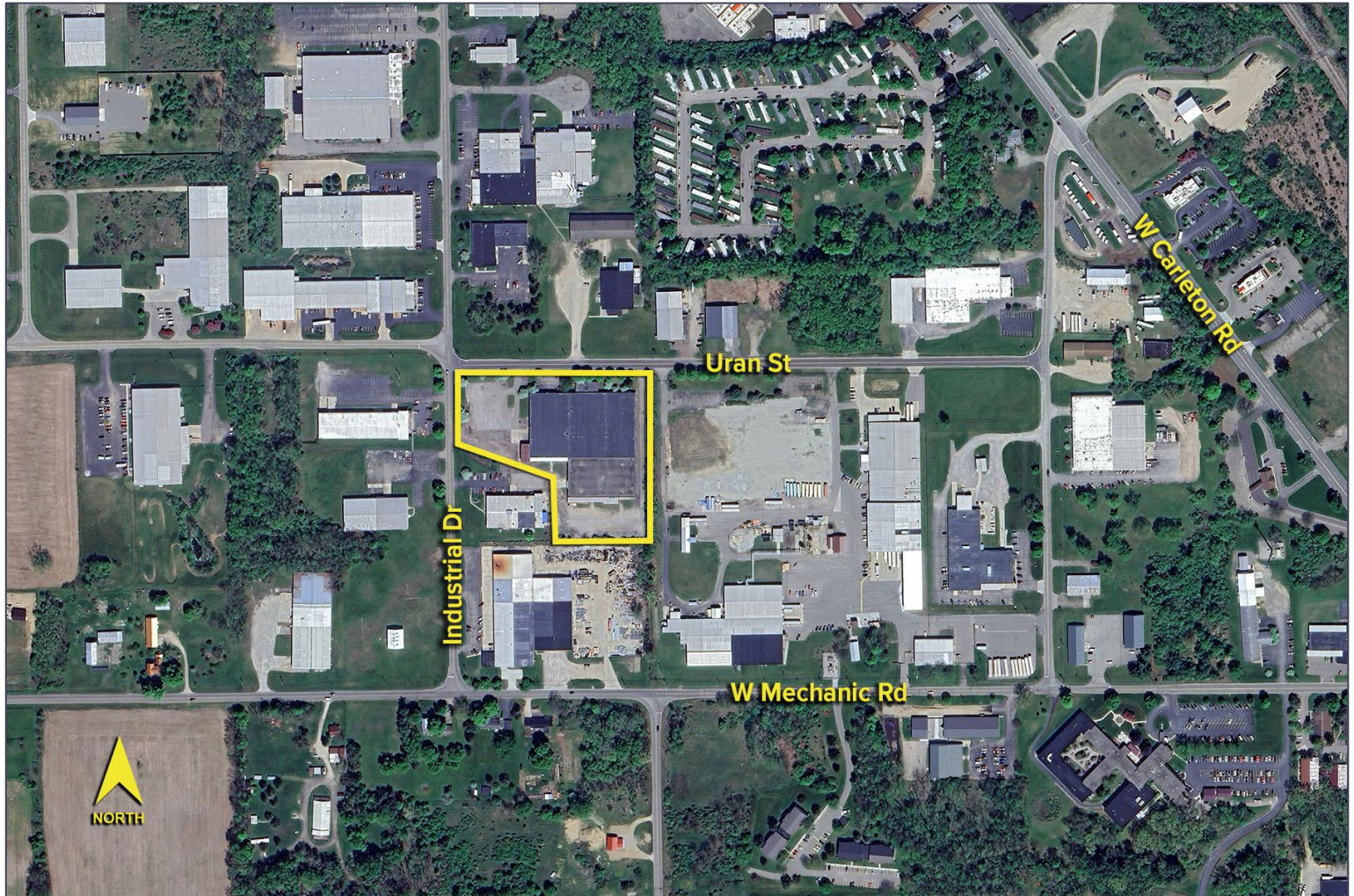


# 221 Industrial Drive – Hillsdale, Michigan

## Industrial For Sale

97,486  
Square Feet  
AVAILABLE

Aerial



For more information, please contact:

**JEFF LEMANSKI**  
(248) 359 0641  
jlemanski@signatureassociates.com

**JOE PLASKEY**  
(248) 948 0110  
jplaskey@signatureassociates.com

**SIGNATURE ASSOCIATES**  
One Towne Square, Suite 1200  
Southfield, MI 48076  
www.signatureassociates.com

Information is subject to verification and no liability for errors or omissions is assumed. Price is subject to change and listing withdrawal.