

N JOHNSON CITY OFFICE BLDG C

801 Sunset Drive, Building C
Johnson City, TN 37604

Location

Located in Sunset Professional Park in the heart of Johnson City

Available for Sale

Approx. 12,018 SF office building
\$1,982,970

Highlights

Part of the Sunset Professional Park Condo Association -
Can be used for medical or professional offices

Ample parking

Zoned MS-1

Main Level (Approx. 8,921 SF)

Lobby/waiting area
Reception area with glass pass-through window
13 private offices & 20 semi-private offices
Large board room with adjoining break room
2 small conference rooms
2 restrooms
Server room

Lower Level (Approx. 3,097 SF)

Lobby/waiting area
Reception area with glass pass-through window & copier
6 private offices
Conference room
Break room
2 restrooms
Janitorial closet with mop sink

Demographics

(2023 Est.)	3 mile	5 mile	10 mile
Population	49,892	83,104	164,213
Median HH Income	\$50,222	\$52,491	\$56,408
Median Age	39.0	39.7	42.2

Contact

John Speropulos, CCIM, SIOR
john@mitchcox.com

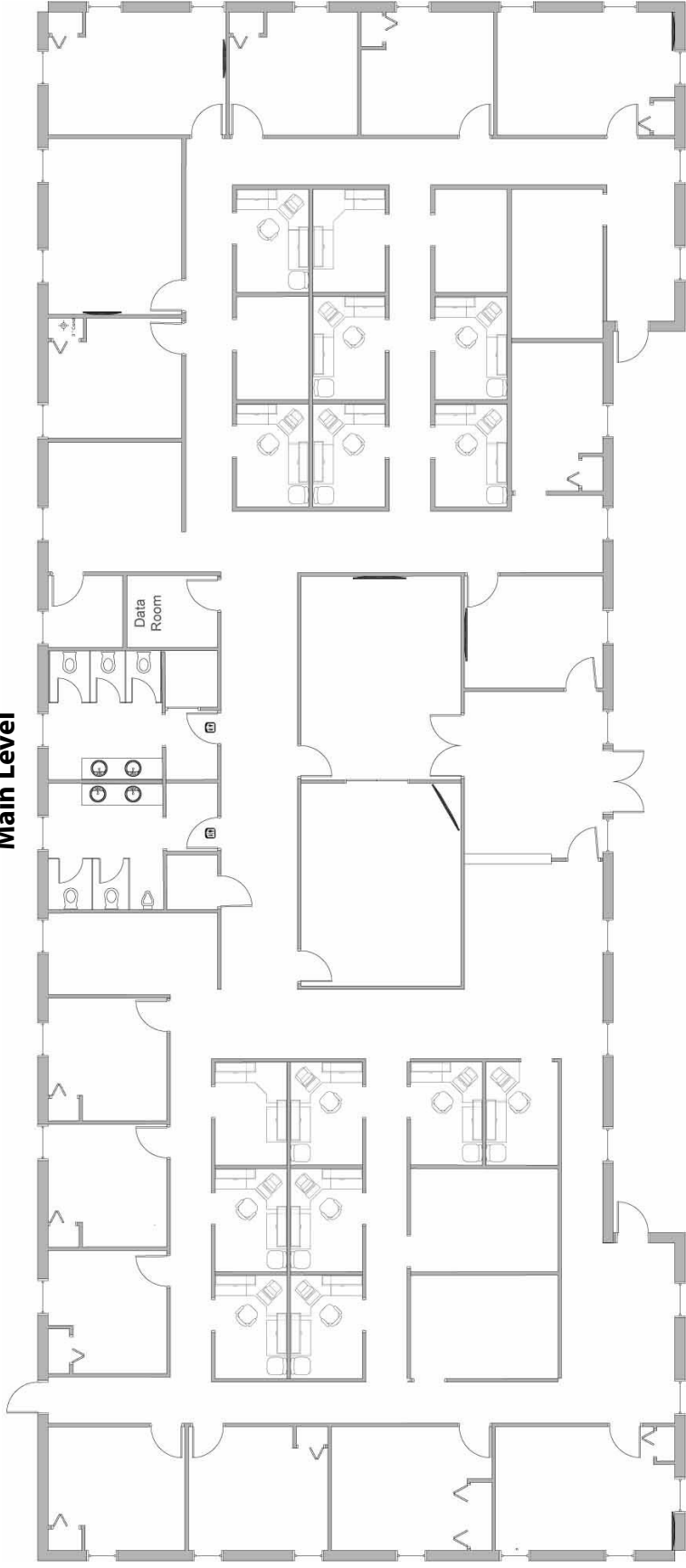
Marc Murphy, CCIM
mmurphy@mitchcox.com

📞 423-282-6582 | 📠 423-282-5903
www.mitchcox.com

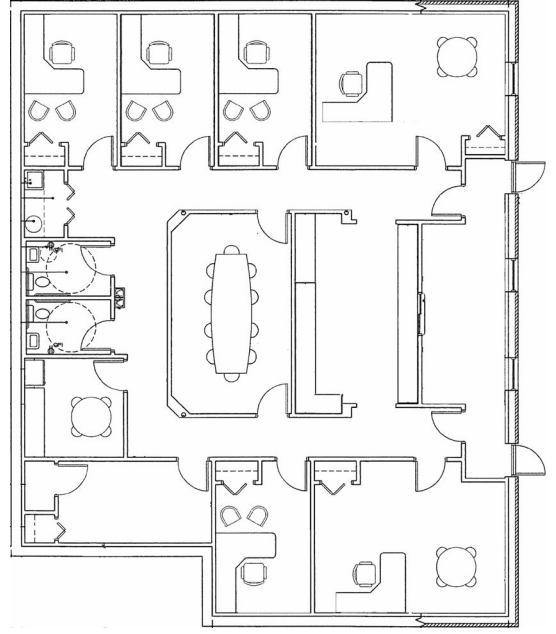


MITCH COX
REALTOR, INC.

Main Level



Lower Level





Subject

State of Franklin
HEALTHCARE ASSOCIATES,
Comprehensive Breast Center



Earl's Barber Shop
Berninalin Stitches
Grassy Valley Homes
RearView Rentals
Best Uniform Center

CRANBERRIES
God's Own
Whitby's

SUN-COUNTY MEDICAL &
STORY SUPPLIES, INC.

McDermott's

Shell
DUNKIN' DONUTS

Car Crazy
Car Wash

Sunset Dr

Knob Creek Rd



MITCH COX
REALTOR, INC.

2304 Silverdale Drive, Suite 200, Johnson City, TN 37601
423-282-6582 (o) 423-282-5903 (f) www.mitchcox.com