

FOR SUBLEASE

2701 TROY CENTER DRIVE

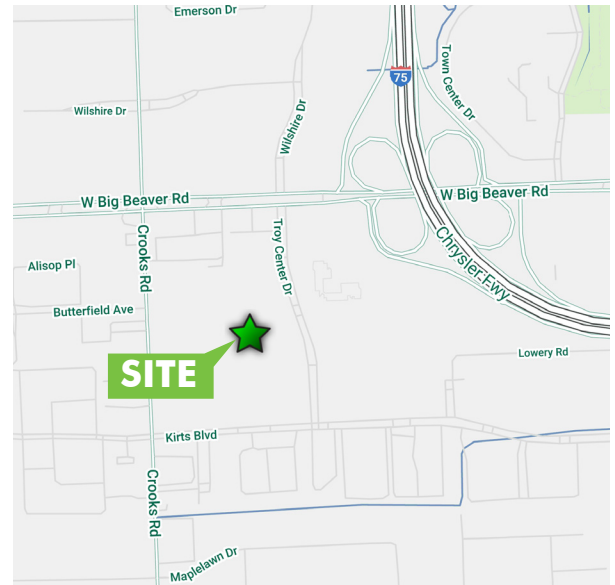
TROY, MICHIGAN

14,878 RSF AVAILABLE FOR SUBLEASE



PROPERTY FEATURES

- + Convenient location with access to surrounding suburbs and Downtown Detroit
- + Direct access to I-75 at Big Beaver
- + High quality office space at competitive rental rate
- + Furniture available
- + Ample parking (5.00/1,000)
- + January 31, 2024 expiration date
- + Lease Rate: \$18.00 per rentable square foot
- + Forthcoming common area renovations



CONTACT US

DAN MORSE

First Vice President

+1 248 936 6822

dan.morse@cbre.com

www.cbre.us/detroit

CBRE

FOR SUBLEASE OFFICE SPACE

2701 TROY CENTER DRIVE
TROY, MICHIGAN

PROPERTY PHOTOS

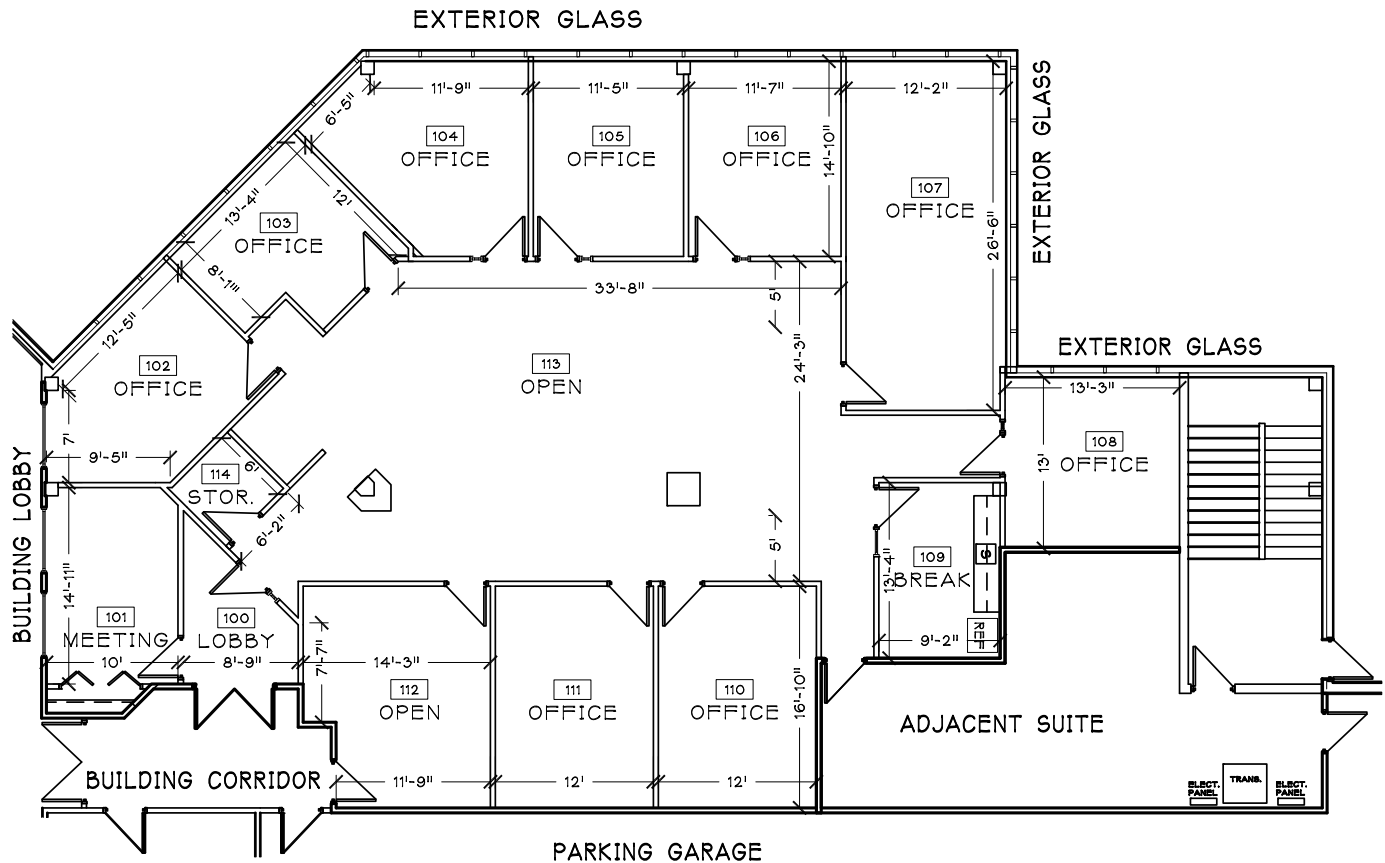


© 2020 CBRE, Inc. All rights reserved. This information has been obtained from sources believed reliable, but has not been verified for accuracy or completeness. You should conduct a careful, independent investigation of the property and verify all information. Any reliance on this information is solely at your own risk. CBRE and the CBRE logo are service marks of CBRE, Inc. All other marks displayed on this document are the property of their respective owners, and the use of such logos does not imply any affiliation with or endorsement of CBRE. Photos herein are the property of their respective owners. Use of these images without the express written consent of the owner is prohibited.

FOR SUBLEASE OFFICE SPACE

2701 CENTER DRIVE
TROY, MICHIGAN

SUITE 100 - 4,224 SF

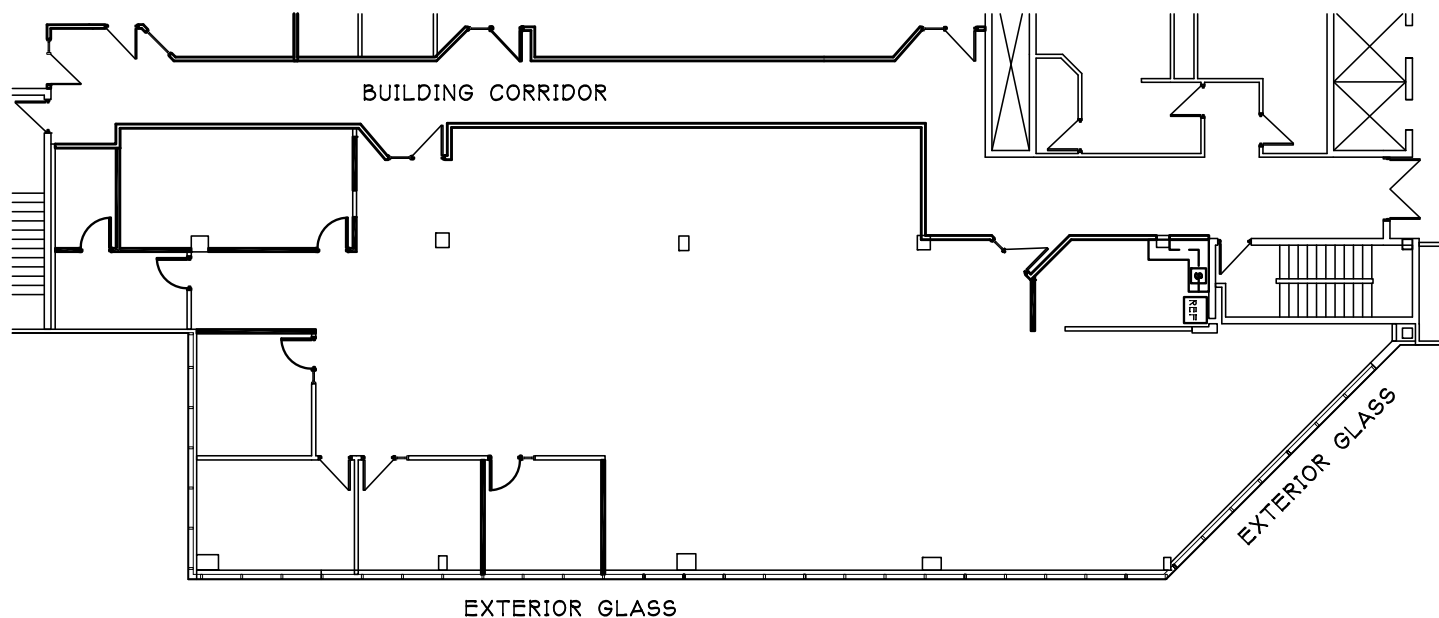


© 2018 CBRE, Inc. All rights reserved. This information has been obtained from sources believed reliable, but has not been verified for accuracy or completeness. You should conduct a careful, independent investigation of the property and verify all information. Any reliance on this information is solely at your own risk. CBRE and the CBRE logo are service marks of CBRE, Inc. All other marks displayed on this document are the property of their respective owners. Photos herein are the property of their respective owners. Use of these images without the express written consent of the owner is prohibited.

FOR SUBLEASE
OFFICE SPACE

2701 TROY CENTER DRIVE
TROY, MICHIGAN

SUITE 201 - 5,303 SF



CONTACT US

DAN MORSE

First Vice President
+1 248 936 6822
dan.morse@cbre.com

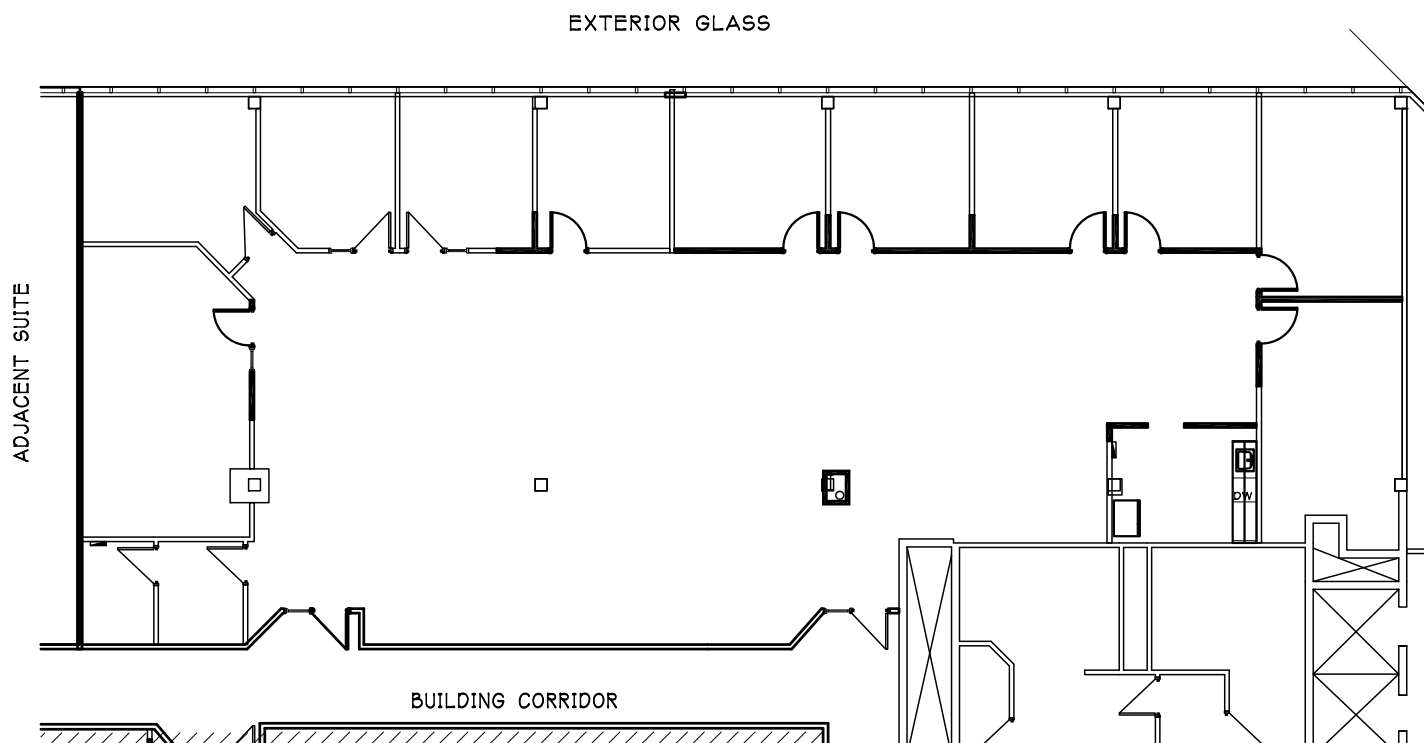
www.cbre.us/detroit

CBRE

FOR SUBLEASE **OFFICE SPACE**

2701 TROY CENTER DRIVE
TROY, MICHIGAN

SUITE 220 - 5,351 SF



CONTACT US

DAN MORSE

First Vice President
+1 248 936 6822
dan.morse@cbre.com

www.cbre.us/detroit

CBRE