



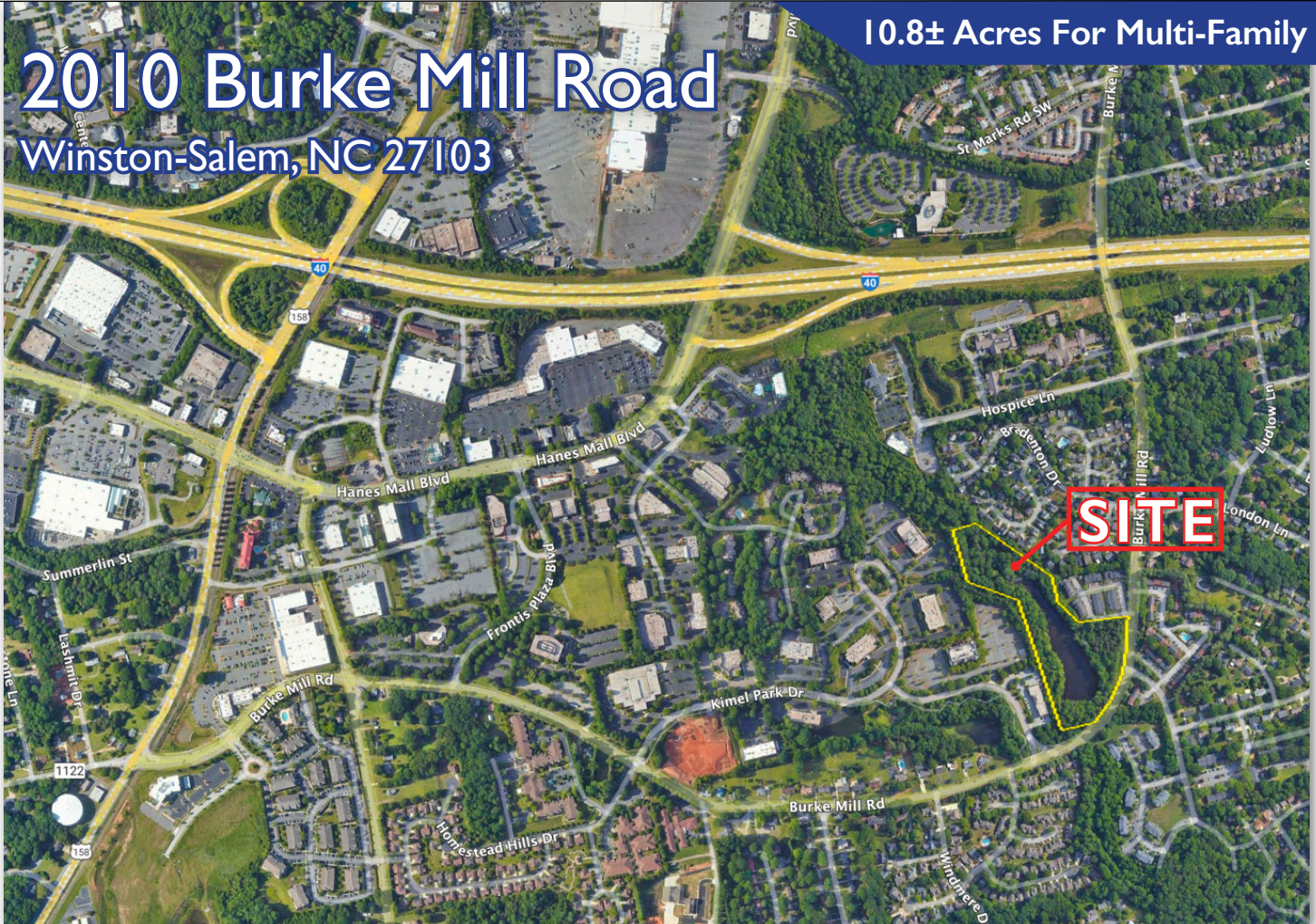
M E R I D I A N

147 S. CHERRY STREET, SUITE 200 | WINSTON-SALEM, NC 27101 | P 336.722.1986 | F 336.723.3173 | MERIDIANREALTY.COM

10.8± Acres For Multi-Family

2010 Burke Mill Road

Winston-Salem, NC 27103



- Up to 2± acre buildable site
- Site plan approved for 27 unit apartments
- Serene setting with opportunity for walking trail surrounding 3.9± acre lake
- Located in high growth area
- Visibility and frontage on Burke Mill Road

	DEMOGRAPHICS		
	1mi	3mi	5mi
POPULATION	8,917	62,492	152,844
HOUSEHOLD	4,476	28,736	66,034
HOUSEHOLD INCOME	\$73,115	\$79,417	\$90,725

For more information:

William T. Bartholomew, Jr., CCIM
William@meridianrealty.com
336.480.2335

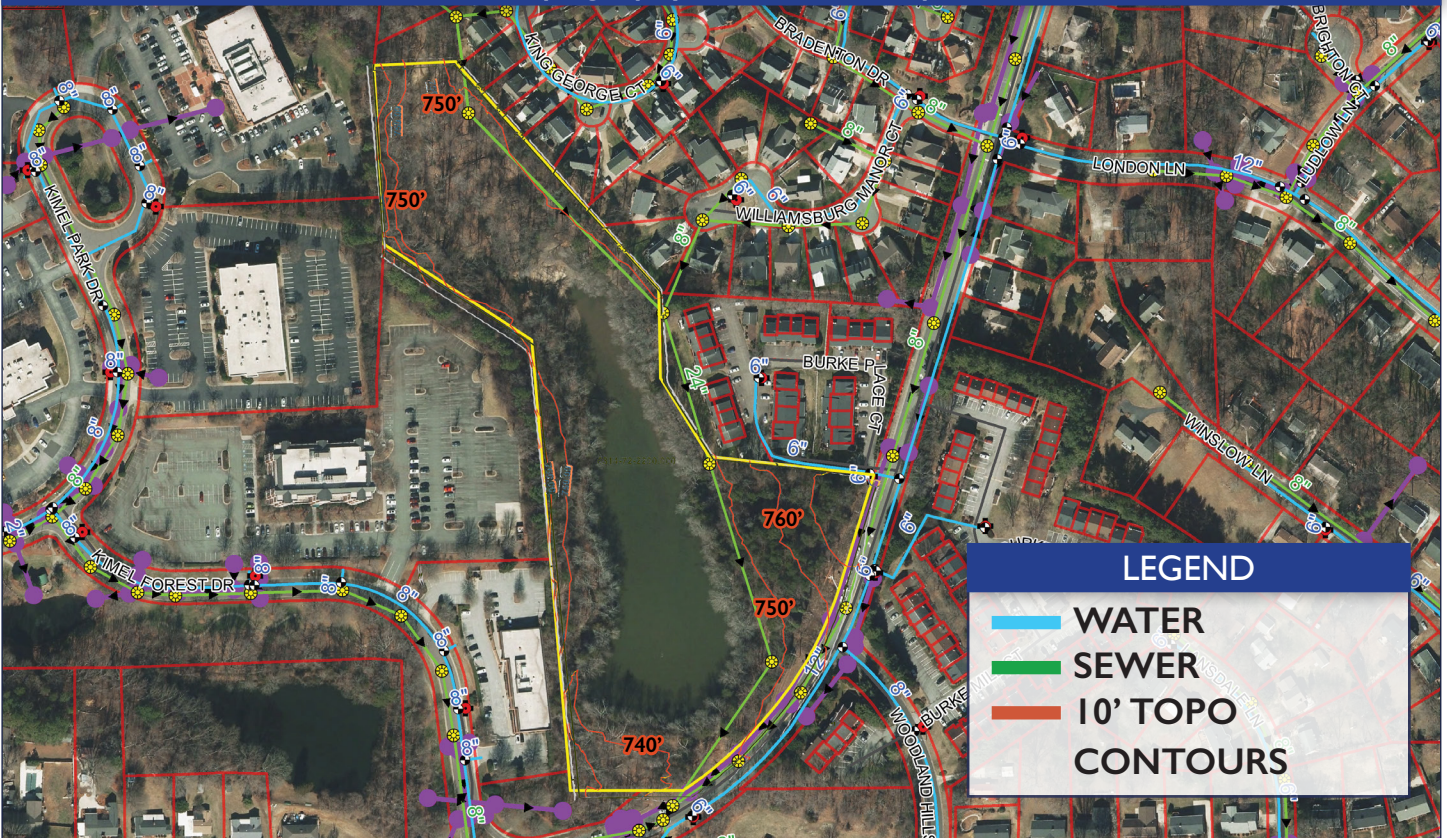
Tiffany J. Secoges, CCIM
Tiffany.s@meridianrealty.com
336.480.2094

FOR SALE: \$375,000

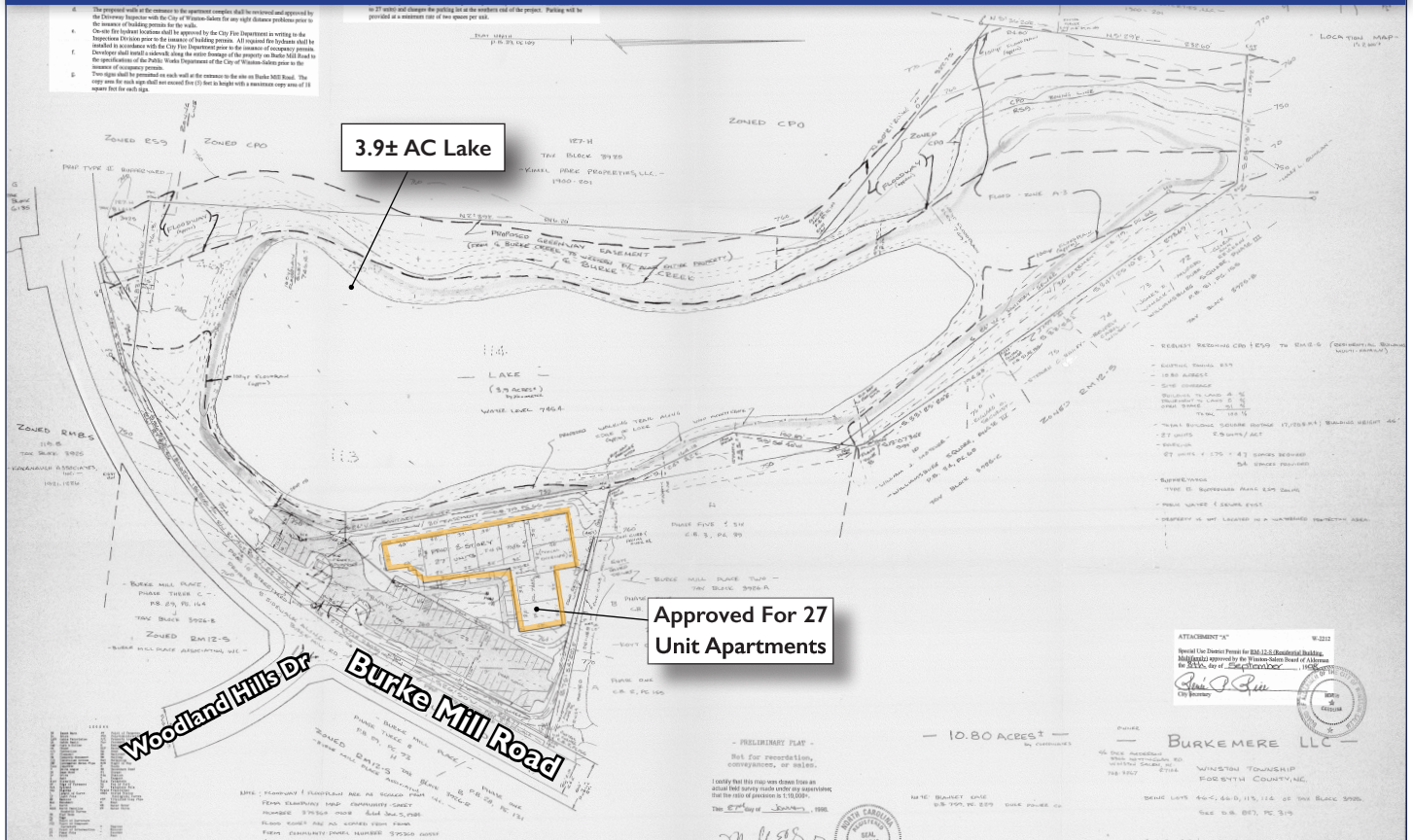
Aerial



Topography & Utilities Map



Site Plan

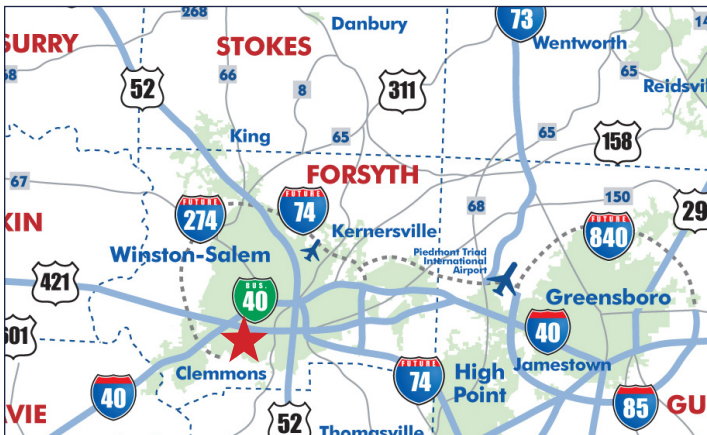


Rendering

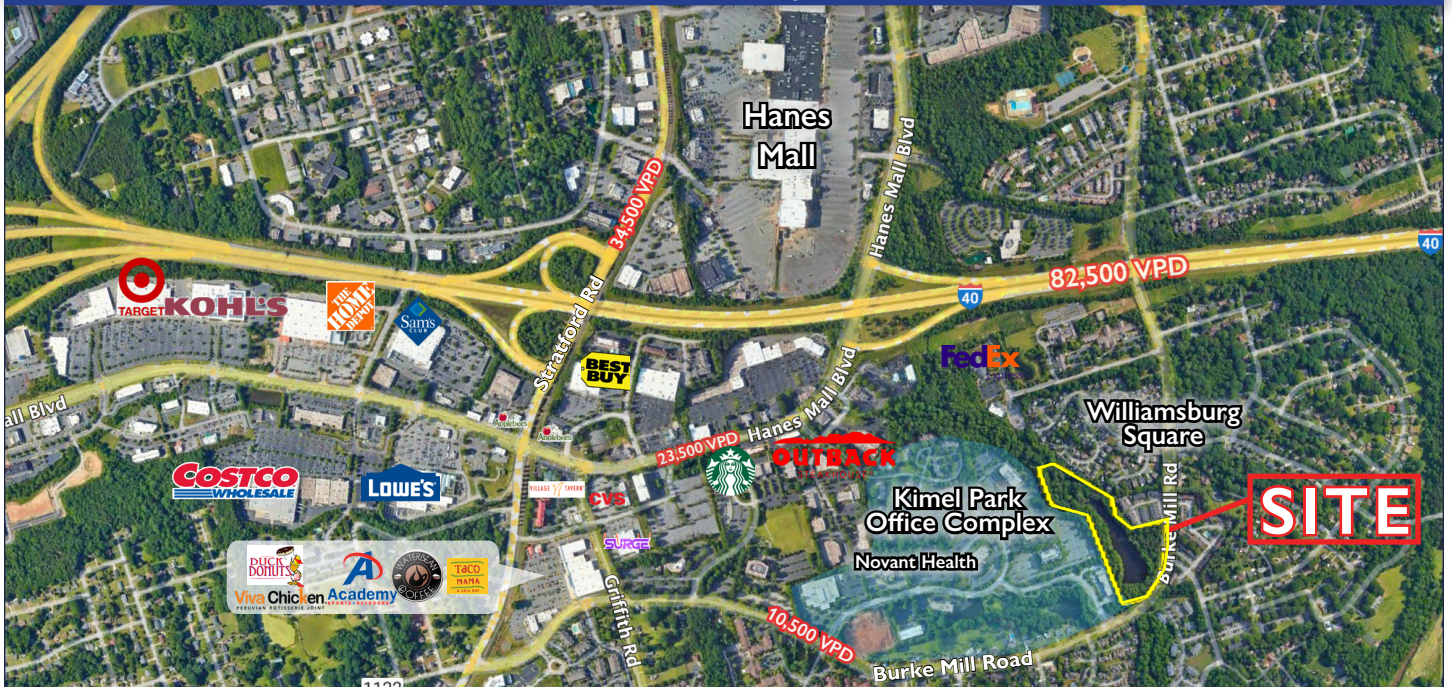


2010 Burke Mill Road | Winston-Salem, NC 27103

- 10.8± AC for sale, includes up to 2± AC buildable site
- Excellent location near Hanes Mall Blvd retail corridor
- Approximately 5 miles to downtown Winston-Salem
- RMI2-S zoning, approved for 27 unit apartments
- Potential for medical office with site plan approval
- Sale Price: \$375,000



Aerial Map



No warranty or representation (express or implied) is made as to the accuracy or completeness of the information set forth herein. All information is submitted subject to errors, omissions, change of price, prior lease or sale, and withdrawal without notice. All marketing material produced by the Meridian Realty Group is proprietary. Any reproduction is expressly prohibited.



THE MERIDIAN REALTY GROUP | 147 S. CHERRY STREET, SUITE 200 | WINSTON-SALEM, NC 27101

P 336.722.1986 | F 336.723.3173

WWW.MERIDIANREALTY.COM