

UNIQUE DOWNTOWN GRESHAM SPACE AVAILABLE FOR THE FIRST TIME IN 15 YEARS!

2,106
SQUARE FEET

\$14.00 /yr
RENT / SF

\$2,457
RENT

(503) 914-1111

<http://www.utopiamanagement.com/>



PROPERTY ADDRESS

619 NE Roberts Ave.
Gresham, OR 97030

COMMERCIAL TYPE: **Office** AVAILABLE: **Now**

DESCRIPTION

Available for the first time in nearly 20 years, this charming converted craftsman offers a rare opportunity to lease a fully built-out office space with loads of character. Ideal for salon, office, medical practice, insurance agency, co-working space, creative studio, or a flex space. Creative use ideas are welcomed!

Features include:

- *Off-street parking
- *Easy access with entry ramp
- *Large reception area
- *Four private offices
- *Large fully encded backyard

Located in the heart of downtown Gresham, this space blends history and functionality. A perfect fit for your growing business!

To schedule tour email pdxleasing@utopiamanagement.com or call 503-914-1111

THIS PROPERTY IS MANAGED BY:

Utopia Management, Inc.

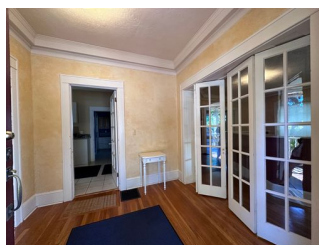
Prices can change regularly at the discretion of landlord. Please contact our office for the most up to date pricing. Information deemed reliable, but not guaranteed.

AMENITIES

- Fenced Backyard
- Close to Shopping
- Close to restaurants
- Off Street Parking
- Large Reception Area
- Close to transportation
- private offices

RENTAL TERMS

Rent	\$2,457
Security Deposit	\$2,400
Application Fee	\$60



View this listing online:

