

**FOR LEASE**

# 600 Waterfront Drive

Pittsburgh, PA 1522



**Brad Totten**

Principal, Managing Director

D 412 944 2132

[brad.totten@avisonyoung.com](mailto:brad.totten@avisonyoung.com)

Avison Young - Pittsburgh | Four PPG Place, Suite 300 | Pittsburgh, PA 15222

© 2024. Avison Young - Pittsburgh. Information contained herein was obtained from sources deemed reliable and, while thought to be correct, have not been verified. Avison Young - Pittsburgh does not guarantee the accuracy or completeness of the information presented, nor assumes any responsibility or liability for any errors or omissions therein.

**Class A Office Space Available**

**AVISON  
YOUNG**

# Office space for lease

600 Waterfront Drive



## Property Highlights

- 1st floor as-built suite comprised of 3,166 RSF
- Access to private outdoor patio and green space
- Free parking: 2.75 spaces / 1,000 SF
- Beautifully renovated and professionally managed
- Washington's Landing location:
  - Immediate access to Route 28 North/South
  - Easy access to CBD, Strip District and Lawrenceville

## Offering Summary

Lease Rate	\$22.50 SF/yr (Full Service)
Building Size	28,862
Available SF	3,166 RSF



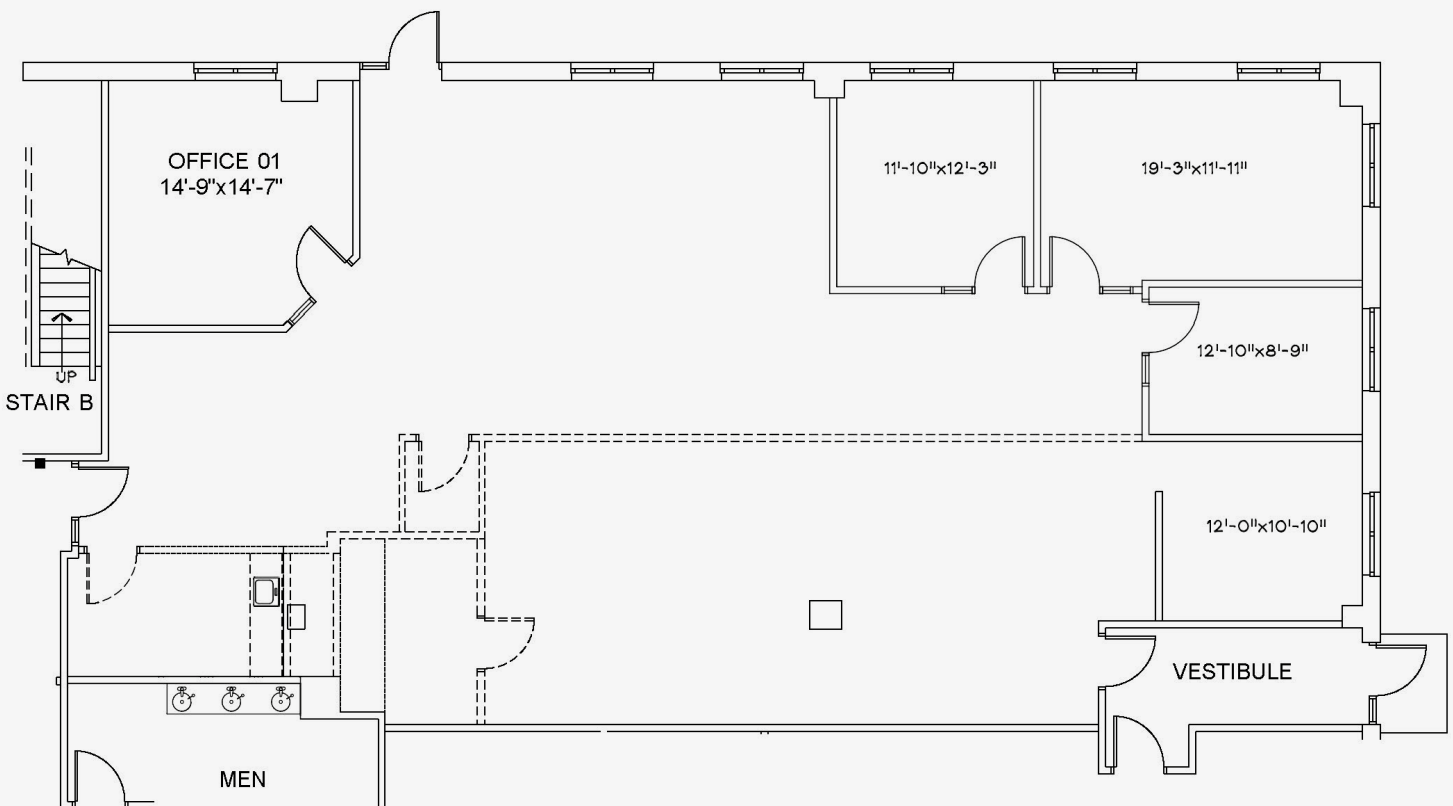
**Brad Totten**  
Principal, Managing Director  
D 412 944 2132  
brad.totten@avisonyoung.com

Avison Young · Pittsburgh | Four PPG Place, Suite 300 | Pittsburgh, PA 15222

© 2024, Avison Young - Pittsburgh. Information contained herein was obtained from sources deemed reliable and, while thought to be correct, have not been verified. Avison Young - Pittsburgh does not guarantee the accuracy or completeness of the information presented, nor assumes any responsibility or liability for any errors or omissions therein.

# ALLEGHENY RIVER

OUTDOOR  
PATIO



Suite 110 available for lease

## 3,166 RSF



**Brad Totten**  
Principal, Managing Director  
D 412 944 2132  
brad.totten@avisonyoung.com