

9440 Double R Blvd

5,621 SF Available

Reno, Nevada 89521



Property Description

For sublease: a 5,621 SF professional office building featuring a well-designed layout that includes a welcoming reception area, multiple private offices, a conference room, a spacious open area, workstations, kitchen, mailroom, storage space, and restrooms. This property is situated in a prime location within one of the fastest-growing submarkets in the area, and is conveniently close to restaurants, retail shops, office complexes, industrial parks, and

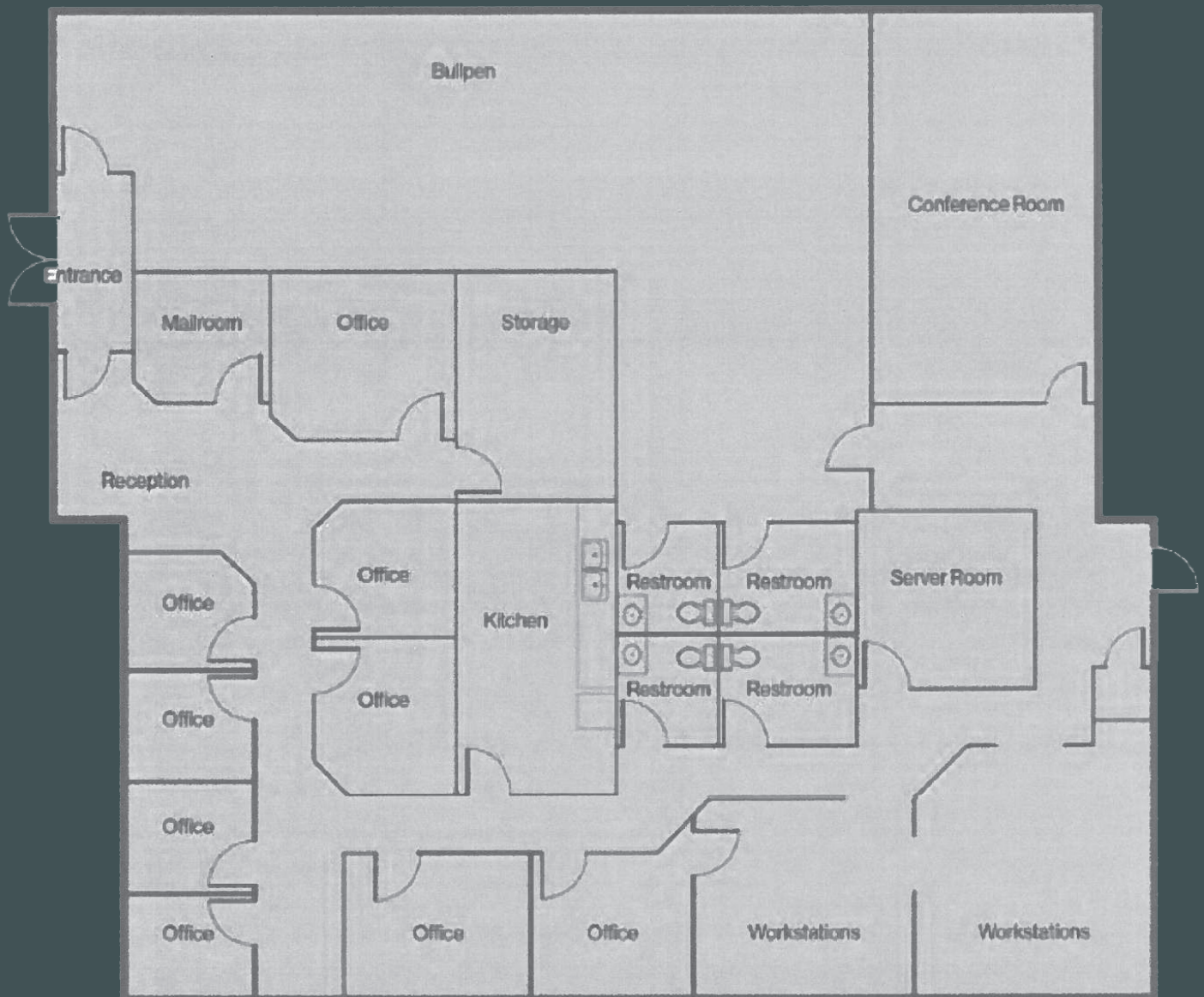
residential neighborhoods. It offers easy access to the I-580 Freeway, South Virginia Street, and South Meadows Parkway.

+ \$1.23 PSF/MO., NNN

+ Master Sublease Expires June 30, 2028

FLOOR PLAN

- + 5,621 SF Available for Sublease
- + Reception
- + Several Offices
- + Conference Room
- + Large Open Area
- + Work Stations
- + Kitchen
- + Mail Room
- + Storage
- + Restrooms
- + 2 Entrances





Contact Us

Leahna Chapman
Senior Associate
+1 775 823 6937
leahna.chapman@cbre.com
Lic. 0183267

Matt Grimes, CCIM
Senior Vice President
+1 775 356 6290
matt.grimes@cbre.com
Lic. 0072644

David Woods, CCIM
Senior Vice President
+1 775 321 4459
david.woods@cbre.com
Lic. 0072655

© 2025 CBRE, Inc. All rights reserved. This information has been obtained from sources believed reliable, but has not been verified for accuracy or completeness. You should conduct a careful, independent investigation of the property and verify all information. Any reliance on this information is solely at your own risk. CBRE and the CBRE logo are service marks of CBRE, Inc. All other marks displayed on this document are the property of their respective owners, and the use of such logos does not imply any affiliation with or endorsement of CBRE. Photos herein are the property of their respective owners. Use of these images without the express written consent of the owner is prohibited.