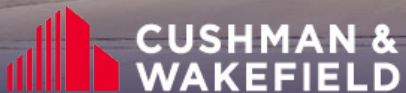


18,833 SF Sports Facility Space for Lease

7725 Victory Lane, North Ridgeville, Ohio 44039



[VIEW 360 PROPERTY TOUR](#)



7725 Victory Lane

- State of the art sports facility with flexible layout and generous square footage
- Currently zoned for recreational use
- Automatic retractable nets
- Men and women's locker rooms
- Second floor mezzanine
- Easy access to highways
- Adjacent to Victory Park fields and co-tenant with HoopTech
- Clear span building
- Climate controlled facility

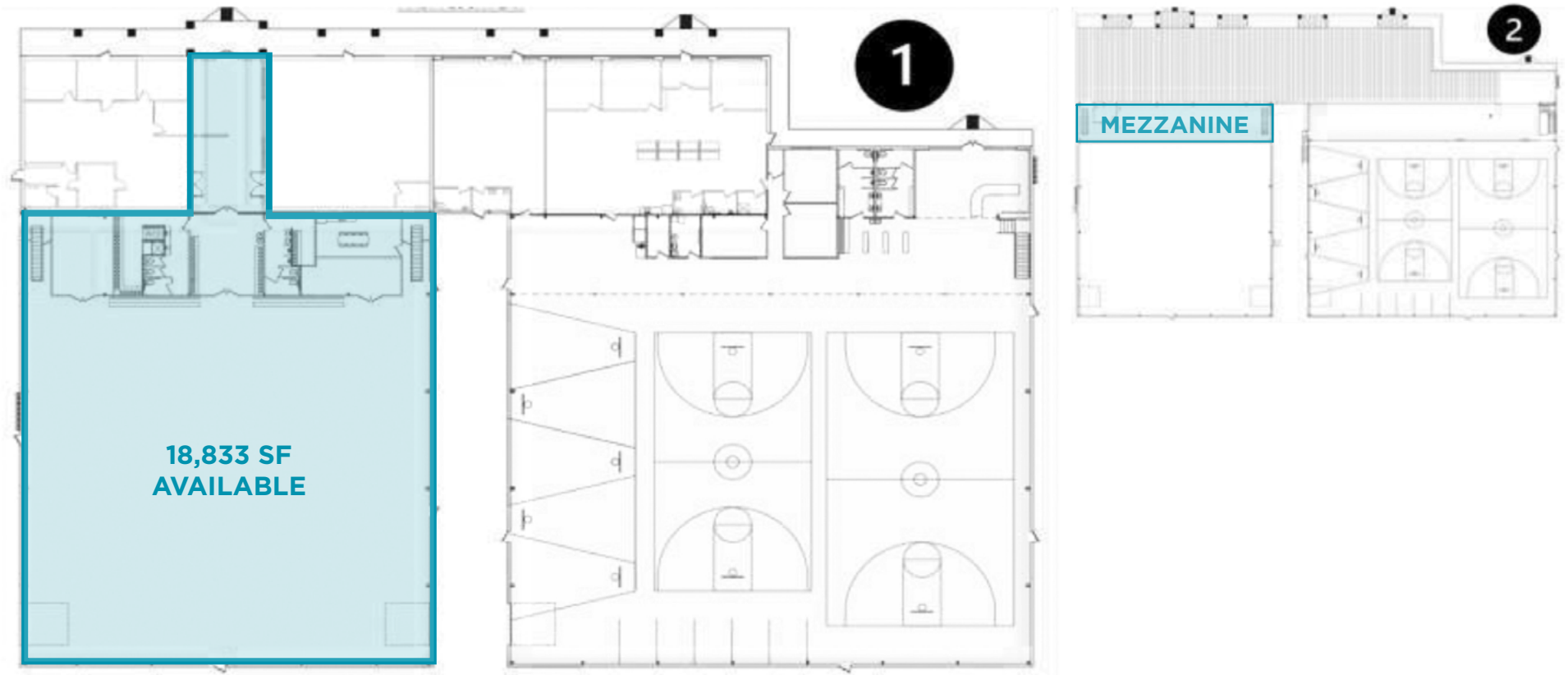
CALL FOR PRICING



Quick Stats

Total Space	48,948 SF
Available Space	18,833 SF
New Construction	2016
Parking Spaces	60 spaces
Construction Status	Existing
Deck Type	Metal
Floor Type	Concrete
Lighting	LED
A/C	HVAC
Water	City

Floor Plan | 18,833 SF



Photos



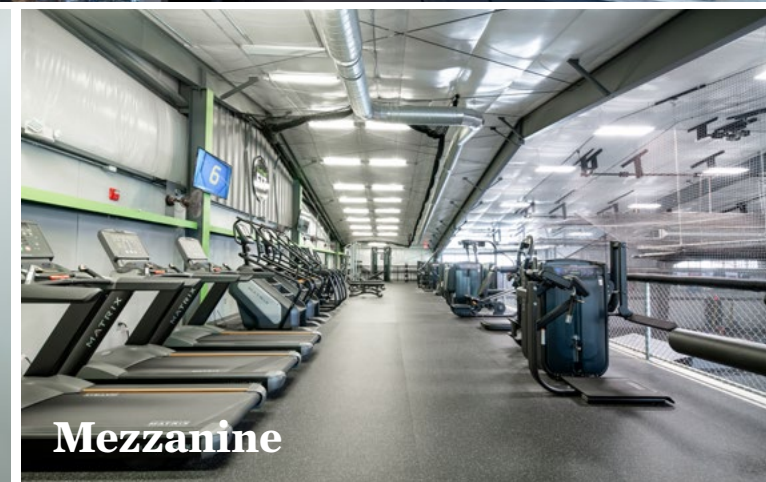
Lobby



Offices



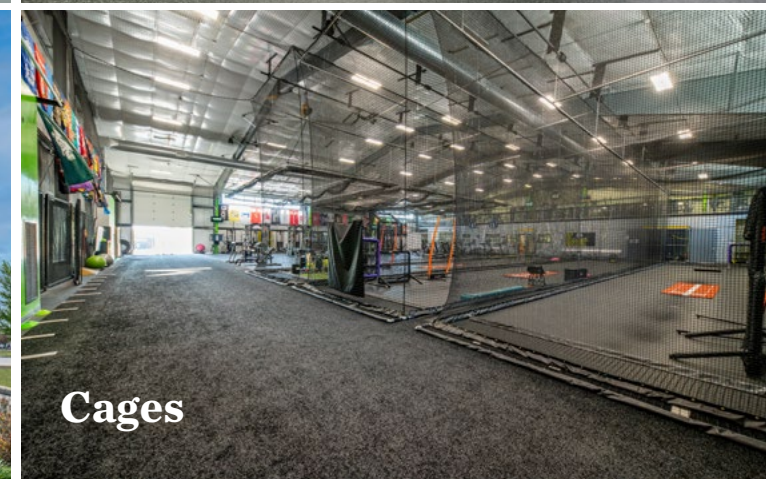
Women's Locker Room



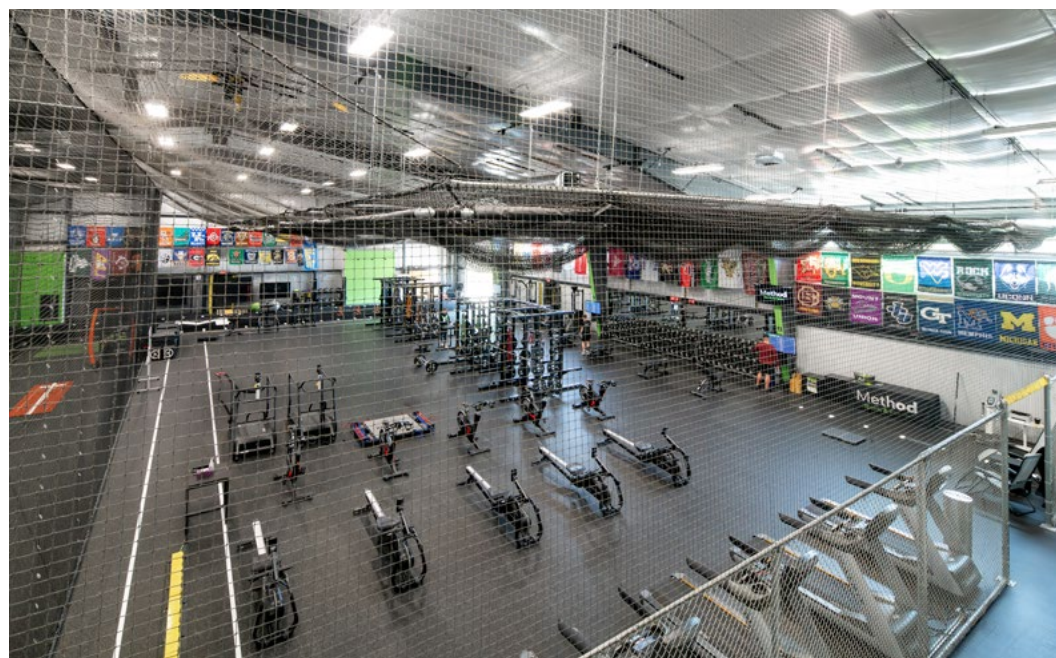
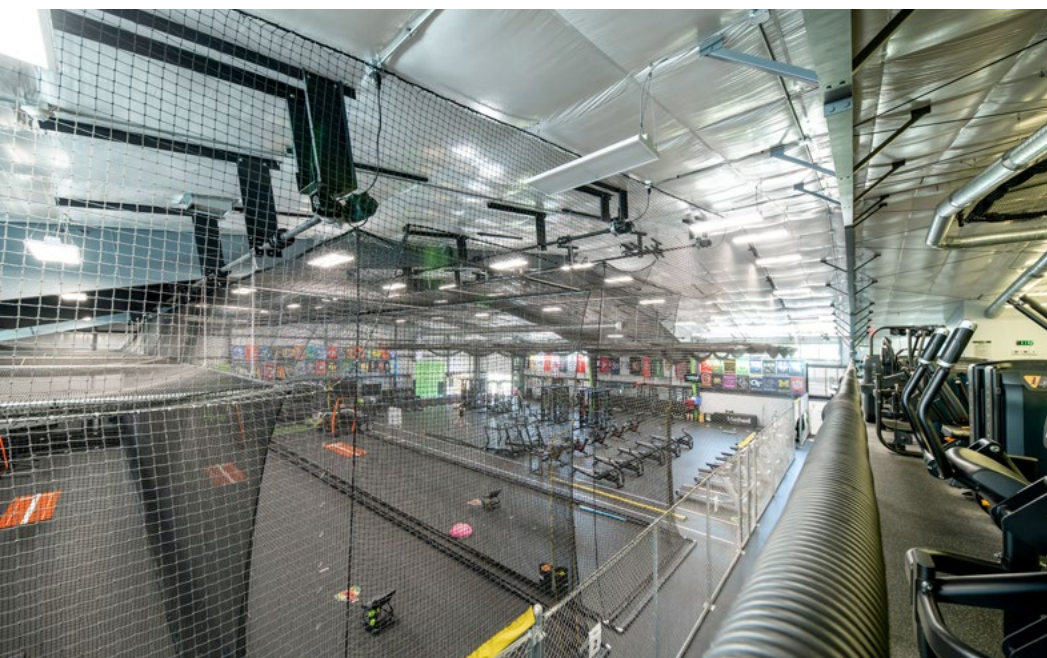
Mezzanine



Monument Signage



Cages



104,697
Population
(2024 | 5 Mile)

44.3
Median Age
(2024 | 5 Mile)

42,869
Households
(2024 | 5 Mile)

\$138,527
Household Income
(2024 | 5 Mile)

2,926
Total Businesses
(2024 | 5 Mile)

33,867
Total Employees
(2024 | 5 Mile)



North Ridgeville

Located just 18 miles west of downtown Cleveland, North Ridgeville is one of the fastest-growing cities in northern Ohio, making it a prime destination. With a thriving population, strong infrastructure, and proximity to major highways and Cleveland Hopkins International Airport, the city offers a strategic advantage for businesses. Top employers include Riddell Sports Group, University Hospitals, and Lorain County Community College. North Ridgeville also boasts a high quality of life. Community spirit runs strong with annual events that draw residents and visitors alike. With a dynamic mix of commerce, culture, and connectivity, North Ridgeville is where business and community grow together.

Main Attractions

Victory Park Ohio: 60+ acre multi-sport and entertainment facility hosting numerous athletic leagues, local and national tournaments, private parties, corporate team building and special events. Victory Park Ohio aims to improve the quality of life in Northeast Ohio by providing a place for both adults and children to relax, play, learn, compete and be entertained.

Sandy Ridge Reservation: A 310-acre nature preserve known for scenic walking trails, wetlands, and premier birdwatching. It's a peaceful escape that draws nature lovers and families year-round.

South Central Park: The city's central hub for outdoor recreation with playgrounds, sports courts, a fishing pond, and summer events like concerts and movie nights.

Aut-O-Rama Twin Drive-In: A nostalgic local favorite since 1965, this drive-in theater features double features on two screens and classic concessions, perfect for a unique night out.





**CUSHMAN &
WAKEFIELD**



7717 - 7725 VICTORY LANE, NORTH RIDGEVILLE, OHIO 44039

MAUREEN ANTER-RESSLER

Vice President

mressler@crescorealestate.com

+1 216 525 1494

ISABEL DEROBERTS

Vice President

ideroberts@crescorealestate.com

+1 216 232 4103

Cushman & Wakefield | CRESCO
6100 Rockside Woods Blvd, Suite 200
Cleveland, Ohio 44131
crescorealestate.com

©2025 Cushman & Wakefield. All rights reserved. The information contained in this communication is strictly confidential. This information has been obtained from sources believed to be reliable but has not been verified. NO WARRANTY OR REPRESENTATION, EXPRESS OR IMPLIED, IS MADE AS TO THE CONDITION OF THE PROPERTY (OR PROPERTIES) REFERENCED HEREIN OR AS TO THE ACCURACY OR COMPLETENESS OF THE INFORMATION CONTAINED HEREIN, AND SAME IS SUBMITTED SUBJECT TO ERRORS, OMISSIONS, CHANGE OF PRICE, RENTAL OR OTHER CONDITIONS, WITHDRAWAL WITHOUT NOTICE, AND TO ANY SPECIAL LISTING CONDITIONS IMPOSED BY THE PROPERTY OWNER(S). ANY PROJECTIONS, OPINIONS OR ESTIMATES ARE SUBJECT TO UNCERTAINTY AND DO NOT SIGNIFY CURRENT OR FUTURE PROPERTY PERFORMANCE.