



FOR SALE

**54 W BARBER AVE
WOODBURY, NJ**

**INDUSTRIAL
WAREHOUSE
+/- 6,720SQFT**

EXCLUSIVELY LISTED BY:

MIKE SCANZANO
SALES ASSOC. / COMMERCIAL ADV.
WARNER REAL ESTATE & AUCTION
856.465.6637
MICHAEL@WARNERREALTORS.COM

JOHN GAVURA
SALES ASSOC. / COMMERCIAL ADV.
WARNER REAL ESTATE & AUCTION
856.745.3138
JOHN@WARNERREALTORS.COM



WWW.WARNERREALTORS.COM

PROPERTY DETAILS

Industrial Warehouse (C-1)

PROPERTY
ADDRESS

54 W Barber Ave Woodbury, NJ

SQUARE FEET

+/- 6,720sqft

LOT SIZE

+/- 0.20 acres

ASKING PRICE

Call for Pricing

EXISTING USE

Auto Repair Shop

ZONING

C-1

PARKING SPACES

+/- 10



PROPERTY OVERVIEW

PROPERTY SUMMARY

Exceptional Opportunity in Woodbury

54 W Barber Ave in Woodbury, NJ is a versatile +/- 6,720 SF warehouse with four drive in doors, 14' clear, and secured access—ideal for distribution, service, or light industrial users. Zoned C-1 Commercial with strong frontage and visibility, this well-located asset offers an accessible investment or owner-user opportunity in a South Jersey market where demand for small-bay industrial space is on the rise.

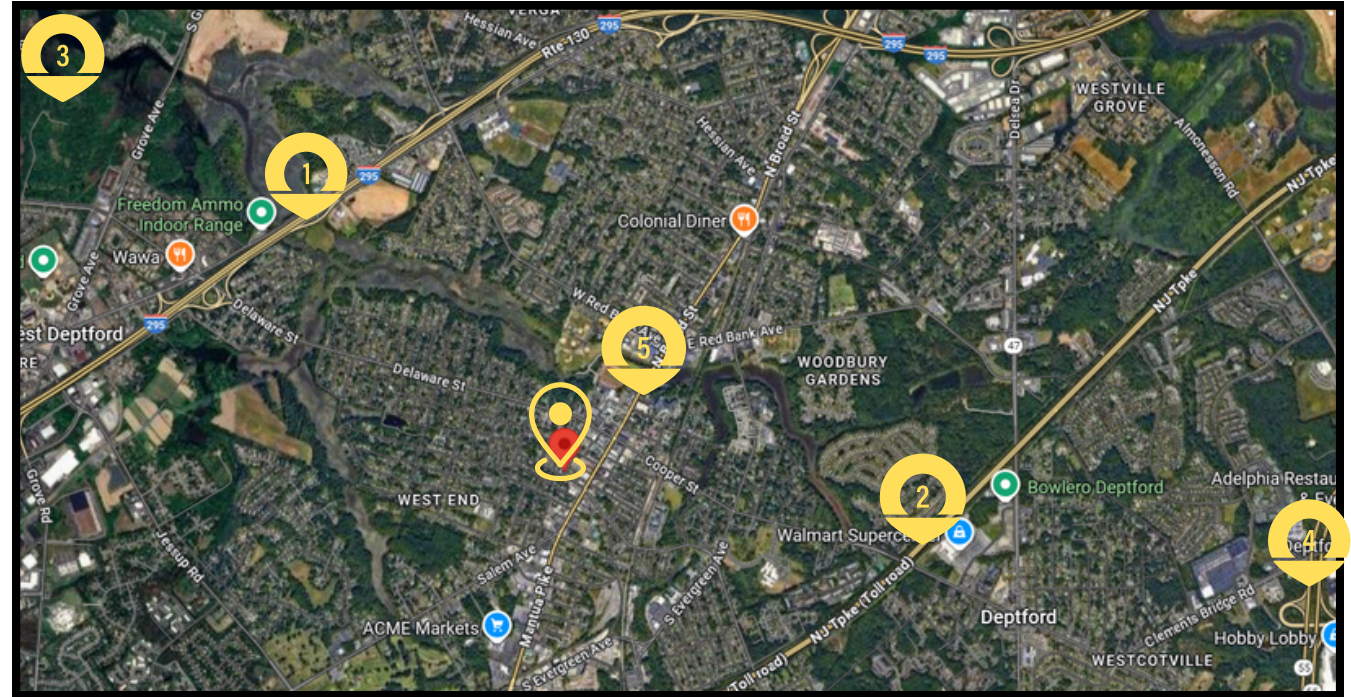
BUILDING HIGHLIGHTS

- Building Size: +/- 6,720 SF
- Lot Size: +/- 0.20 Acres
- Year Built: 1979
- Ceiling Height: 14' clear
- Loading: 4 dock-high doors
- Zoning: C-1 Commercial
- Security: Secured access with system in place
- Quick access to I-295, Route 45, and major South Jersey highways.



NEARBY AMENITIES

- 1 I-295
- 2 New Jersey Turnpike
- 3 RiverWinds Golf & Tennis Club
- 4 Deptford Mall
- 5 Rt.45



DEMOGRAPHICS

Population

	2 miles	5 miles	10 miles
2020 Population	37,324	145,303	1,289,722
2024 Population	38,037	147,354	1,293,505