



Vacant Land

# HWY 130

For Sale | Ash, NC





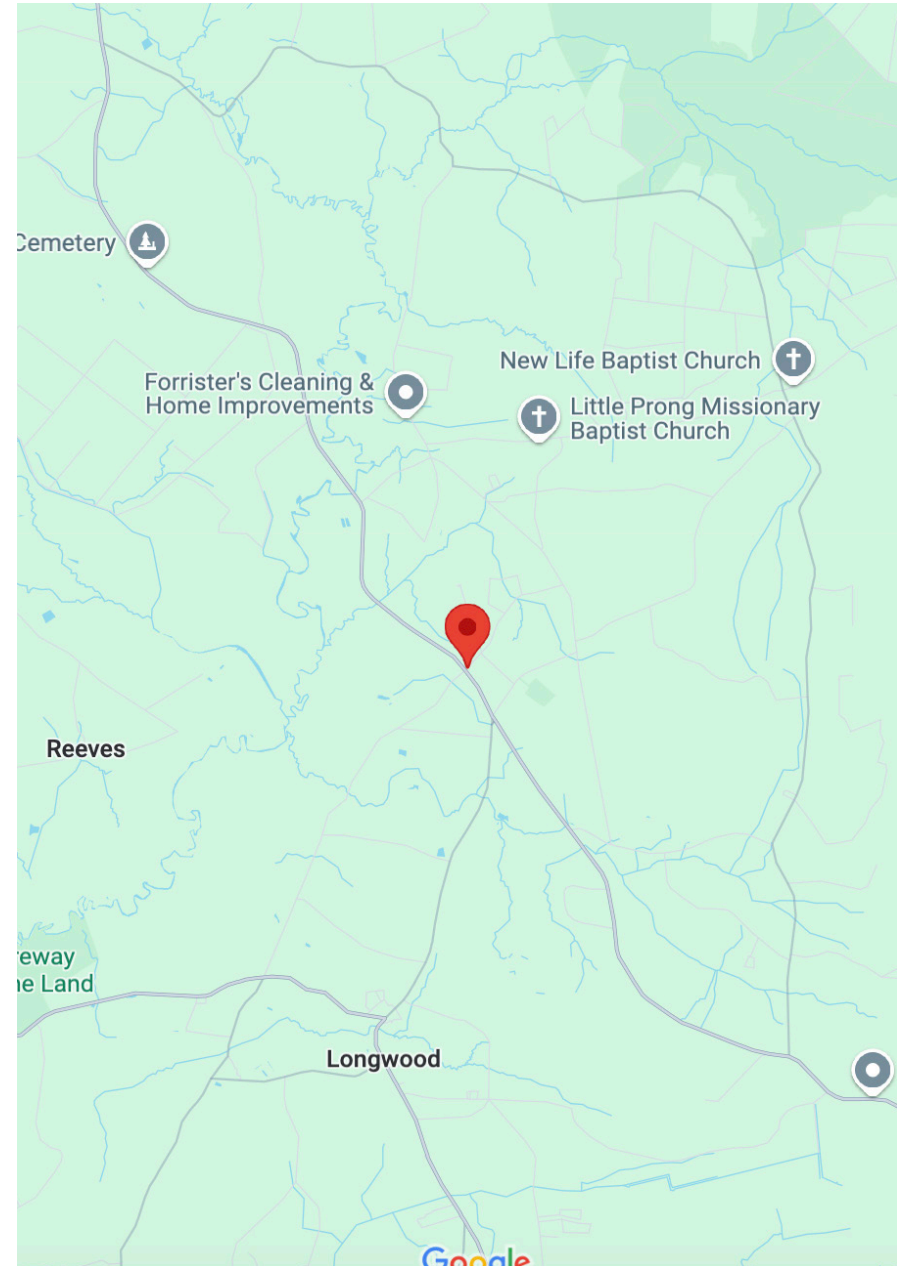
# Overview

<b>Status:</b>	For Sale
<b>Property Type:</b>	Vacant Land
<b>Size:</b>	33.59 Acres
<b>Zoning:</b>	RR
<b>County:</b>	Brunswick

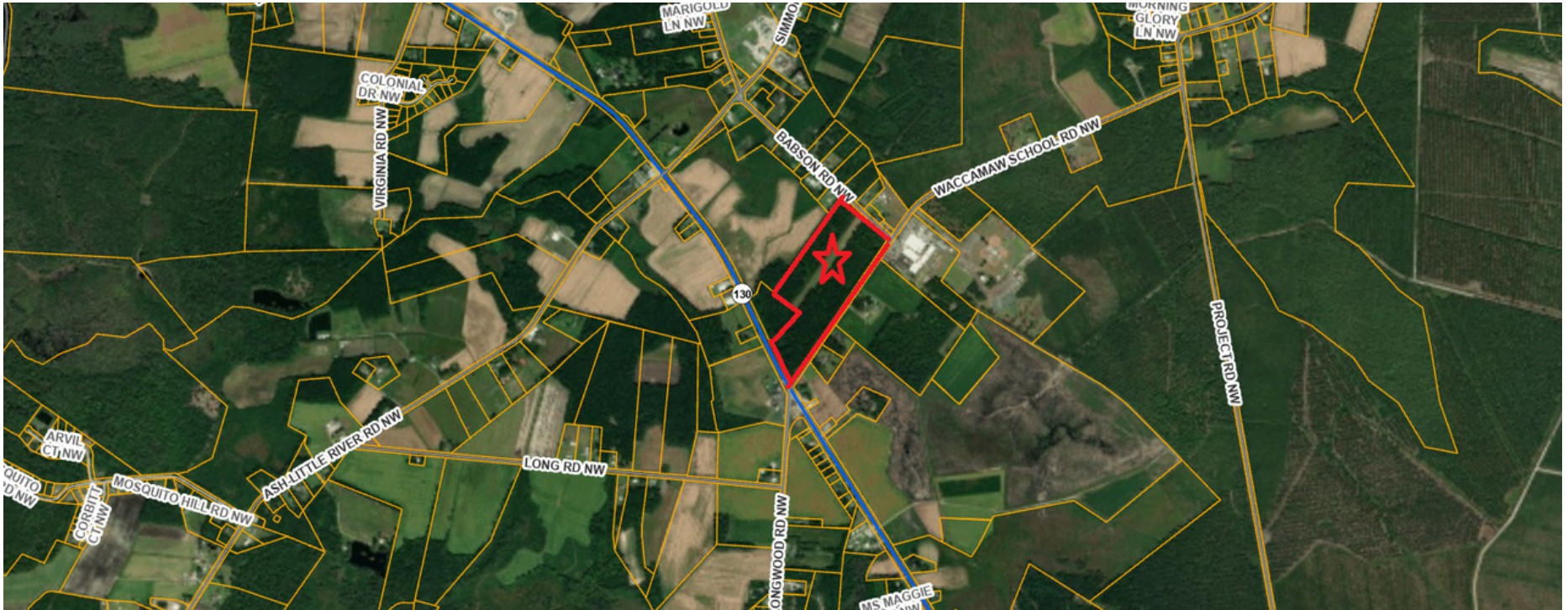
First time on the market.

This mostly-wooded tract near Ash features a dirt landing strip which is currently leased on a month-to-month basis for a nominal rent. The long-term tenant is willing to extend the lease term, but the owners do not want to encumber the property with a lease for a new owner.

The nearby areas are beginning to see some residential development, but sewer lines are not currently near this property. The property is currently zoned CLD along the Highway 130 frontage and Rural Residential on the rear. Potential uses include light commercial (frontage), recreational, residential or a buy & hold strategy.



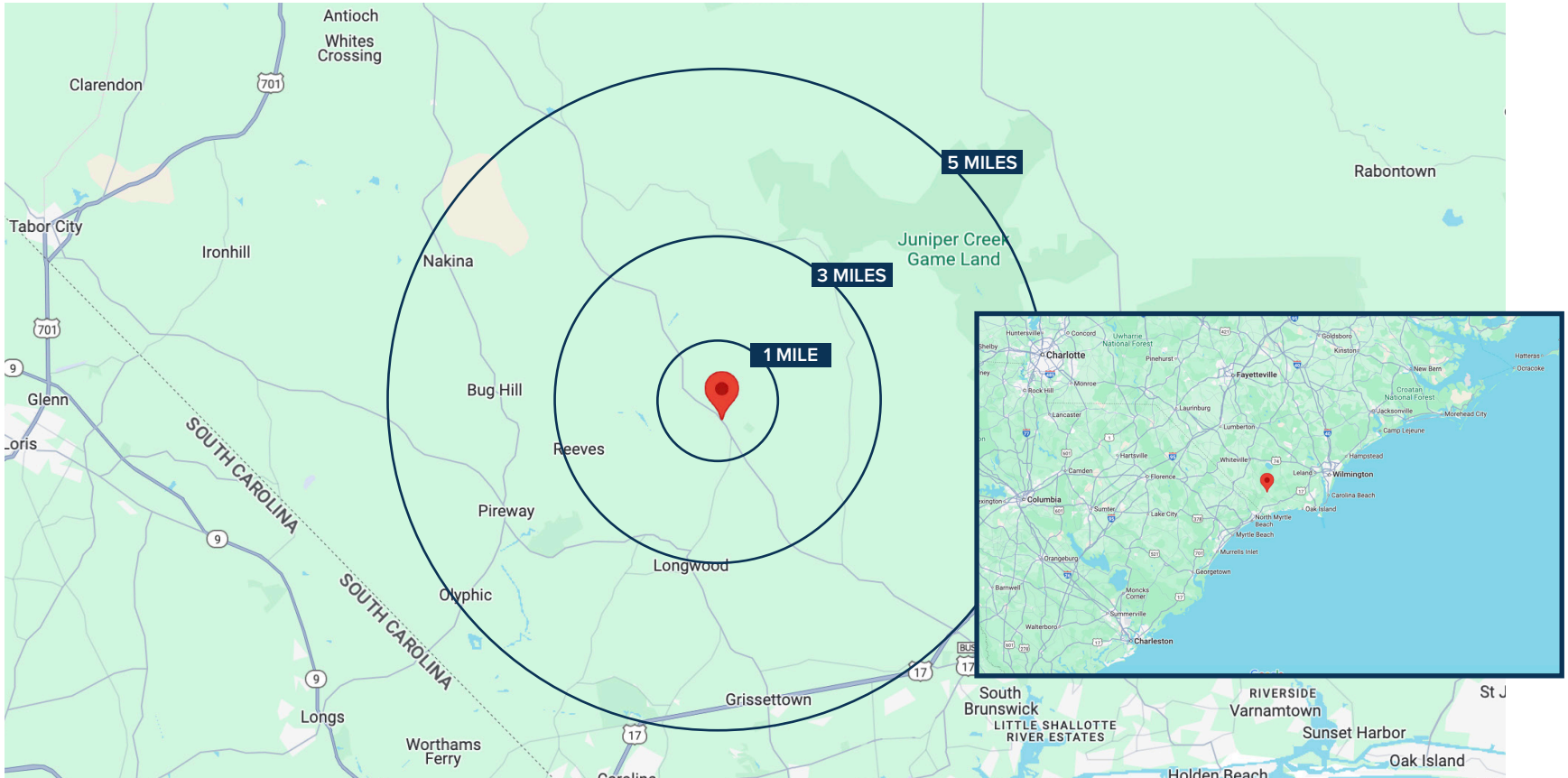
# Property Information



<b>Listing ID:</b>	41346788	<b>Zoning:</b>	RR
<b>Status:</b>	For Sale	<b>County:</b>	Brunswick
<b>Property Type:</b>	Vacant Land	<b>Parcels:</b>	13200007
<b>Total Available Space:</b>	33.59 Acres	<b>Cross Street:</b>	Waccamaw School Rd
<b>Asking Price:</b>	\$495,000	<b>Space Use:</b>	Airstrip
<b>List Price/Acre:</b>	\$14,737	<b>Available:</b>	Now
<b>Free &amp; Clear:</b>	Yes		

# Demographics

	POPULATION	HOUSEHOLDS	AVG. HH INCOME	EMPLOYMENT
<b>1 MILE</b>	192	1,702	\$40K	77
<b>3 MILES</b>	1,468	1,967	\$42K	590
<b>5 MILES</b>	2,997	3,542	\$54K	1202





# Aerial



# Local Information



## Ash, NC

Ash, NC, is a peaceful, welcoming community nestled in the scenic landscapes of Brunswick County, known for its natural beauty and proximity to some of North Carolina’s most popular coastal destinations. This area offers a blend of rural charm and easy access to nearby beach towns, including Ocean Isle Beach and Holden Beach, both about a 30-40 minute drive away. Residents in Ash enjoy a relaxed pace of life with convenient connections to outdoor activities, local markets, and community events.

Brunswick County also boasts scenic spots like the Green Swamp Preserve, where you can explore unique wildlife and rare plant species. For those who appreciate a slower pace but want easy access to beaches, fishing, and other coastal activities, Ash is well-positioned. Only about an hour’s drive from Wilmington and Myrtle Beach, Ash offers the best of both worlds: the serenity of rural life with the attractions of larger cities within reach.

# Contact Info

---

## Office

2524 Independence Blvd.  
Wilmington NC 28412

910-791-0400

[www.mwmrealestate.com](http://www.mwmrealestate.com)

---

## Listing Agent

Hansen Matthews

910-538-5959

[hansen@mwmrealestate.com](mailto:hansen@mwmrealestate.com)

All information furnished is from sources deemed reliable, but no warranty or representation is made as to the accuracy thereof and same is submitted subject to errors omissions, change of price, rental or other conditions, without notice. No liability of any kind is to imposed on the broker herein.