

Retail Space For Lease

702 Mall Blvd, Savannah, Georgia 31406

±410 SF+ MULTIPLE UNITS AVAILABLE

PROPERTY DESCRIPTION

410+ SF retail/office space for lease at 702 Mall Blvd in Savannah, GA. Easily expandable depending on use. This multi-tenant brick building is conveniently located in the Greater Savannah market in between Waters Avenue and Abercorn Street. The configuration includes showrooms, storage rooms, workshop/warehouse area, private offices, break areas with kitchenettes and several restrooms. Second floor offers small office space up to 4,800 SF, accessed via stairwell. The space is available as of January 1, 2026, possibly sooner. Estimated NNN/CAM \$6.00/SF. Shown by appointment only.

PROPERTY OVERVIEW

Lease Rate	\$17.00 - \$25.00/PSF NNN
Building Size	15,000 SF
Lot Size	.81 Acres
Building Class	A
Year Built	2001
Zoning	B-C
Market	Savannah
Sub Market	Greater Savannah
Cross Streets	Waters Ave & Hodgeson Memorial Dr

Tony Lembeck

m: 914 393 0041

e: tlembeck@naisavannah.com



1650 E Victory Dr, Suite D,
Savannah, GA 31404



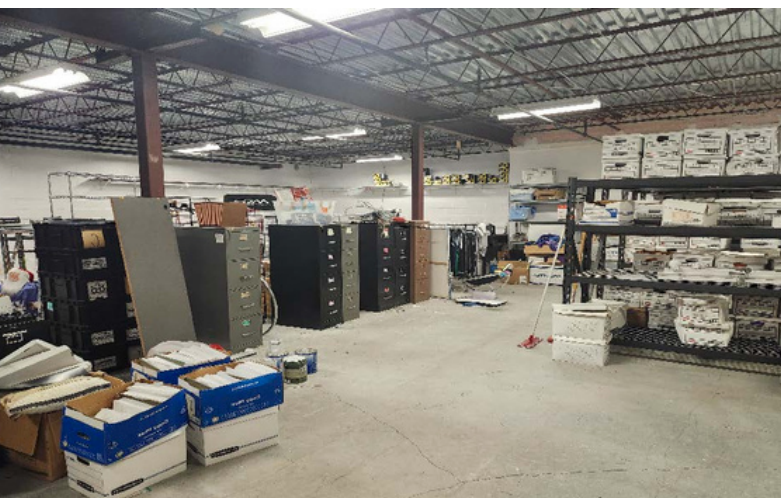
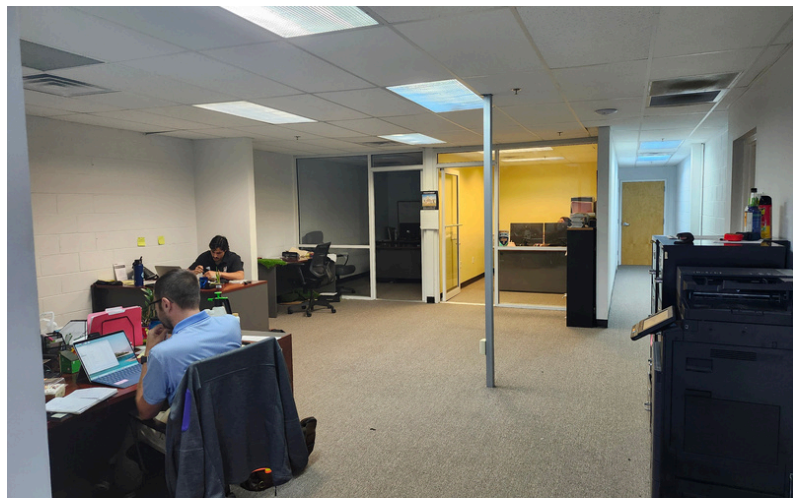
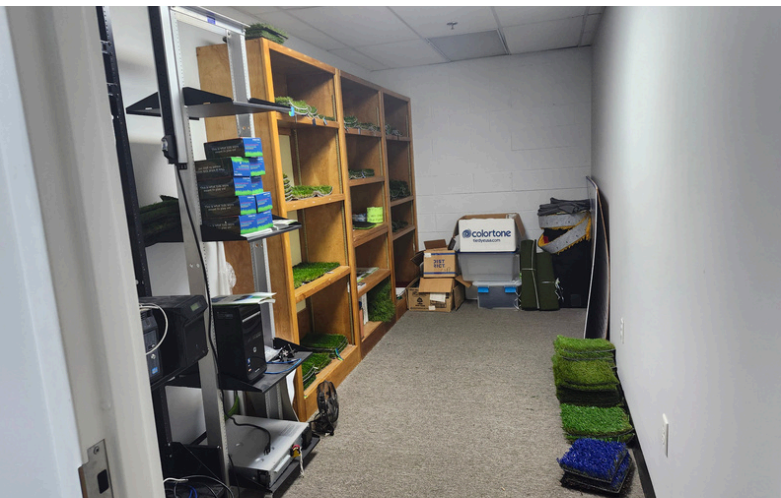
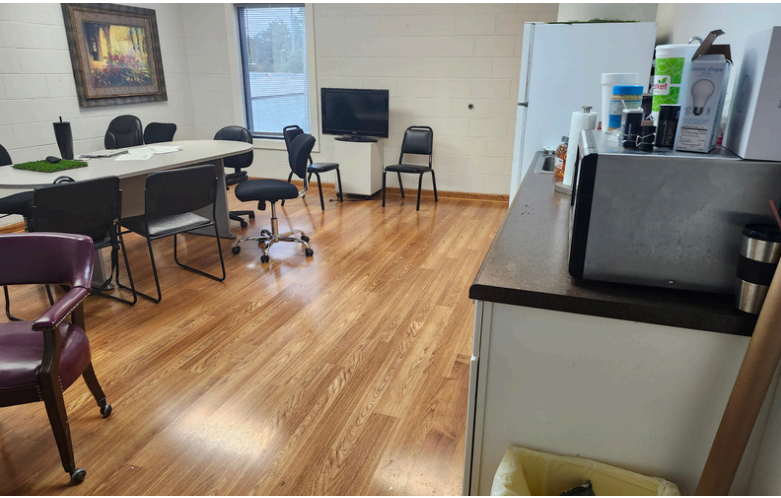
+1 912 358 5600



naisavannah.com

NAI Mopper | Benton

Photos



**For more information,
please contact:**

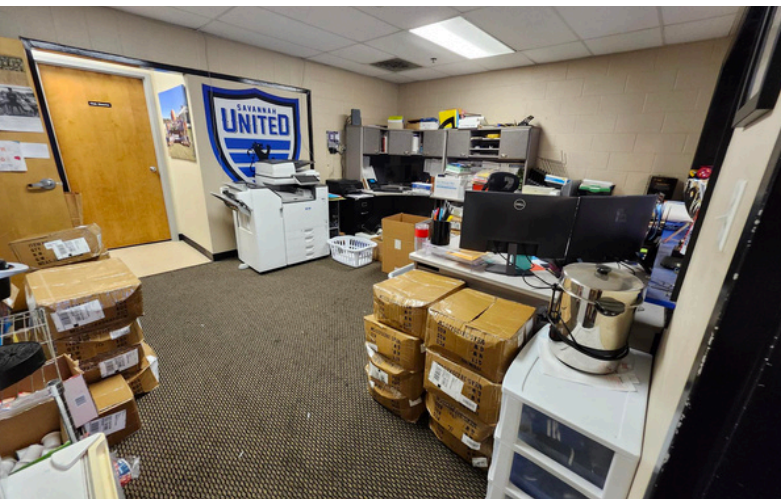
Tony Lembeck

m: 914 393 0041

o: 912 250 6700

e: tlembeck@naisavannah.com

Photos



**For more information,
please contact:**

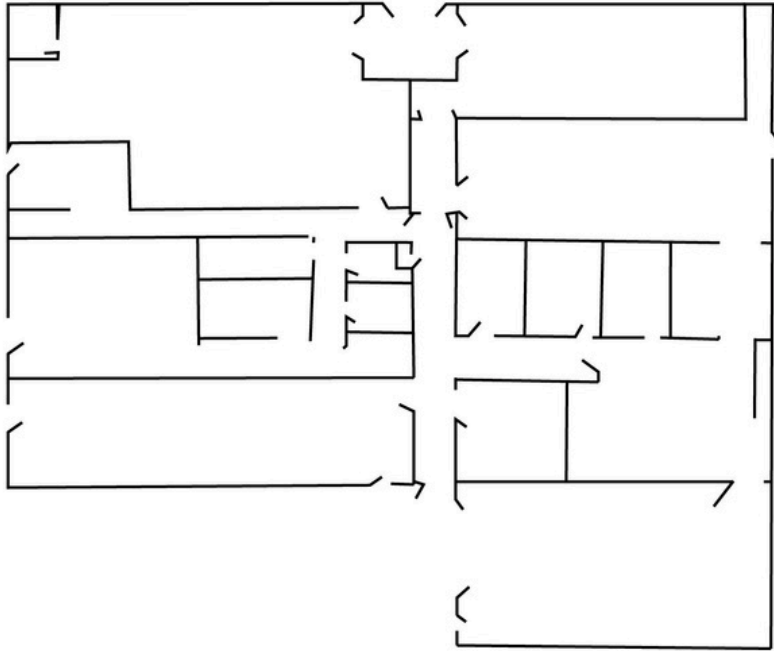
Tony Lembeck

m: 914 393 0041

o: 912 250 6700

e: tlembeck@naisavannah.com

Building Floor Plan



First Floor Plan with Key



For more information,
please contact:

Tony Lembeck
m: 914 393 0041

o: 912 250 6700
e: tlembeck@naisavannah.com

Aerial



For more information,
please contact:

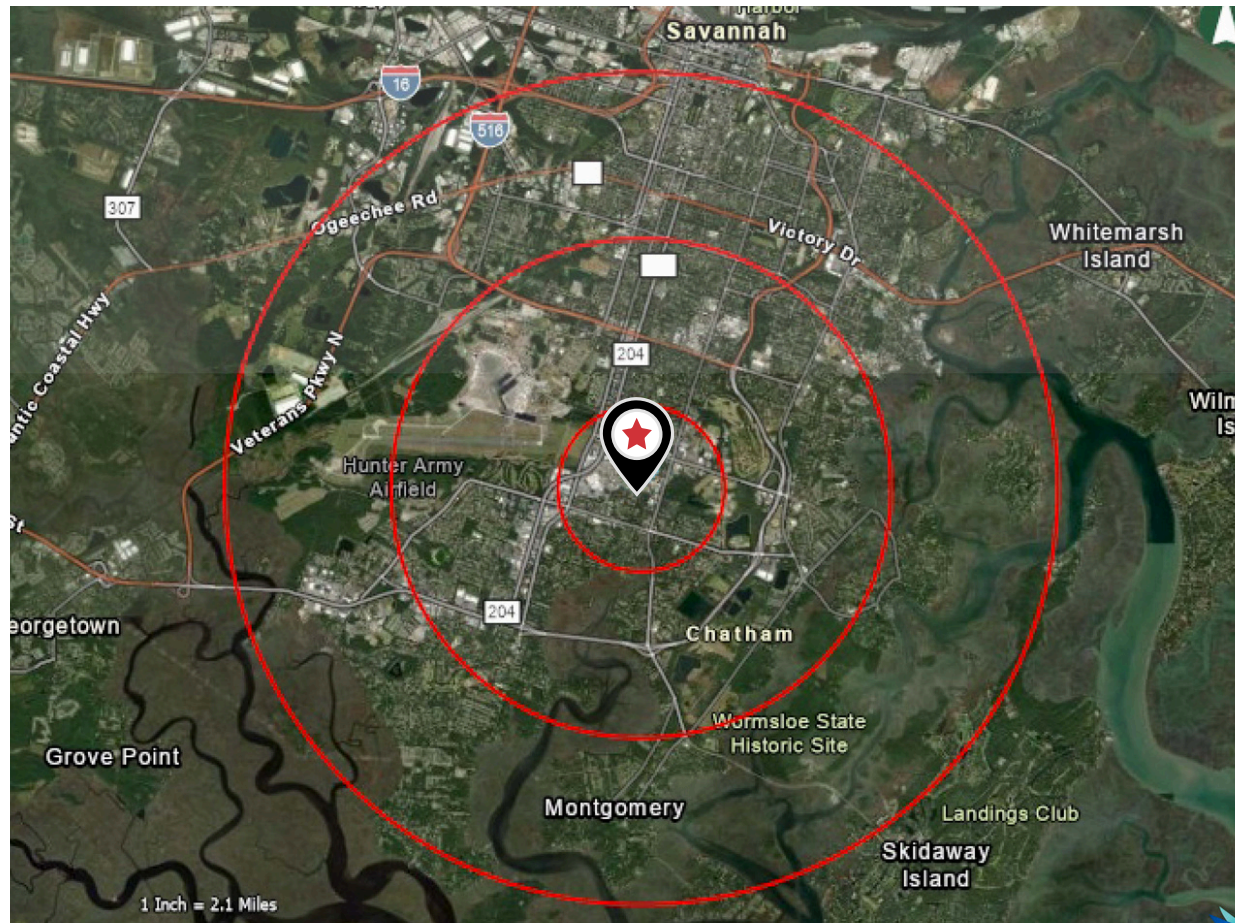
Tony Lembeck

m: 914 393 0041

o: 912 250 6700

e: tlembeck@naisavannah.com

Demographics



Population	1 Mile	3 Miles	5 Miles
2020 Population	7,036	58,777	136,827
Median Age	33	37	37
Total Workers	3,732	29,390	65,474

Households & Income	1 Mile	3 Miles	5 Miles
Total Households	3,238	23,906	56,144
Median HH Income	\$52,350	\$63,322	\$63,687

For more information,
please contact:

Tony Lembeck
m: 914 393 0041
 o: 912 250 6700
 e: tlembeck@naisavannah.com