

3701 NW Cary Prkwy, Ste 209B

Cary, NC 27513

SUBLEASE



Apprx. 219sf Private Office

Includes Shared Waiting Area, Kitchen & Restroom

Fully Furnished Private Office - Utilities & Internet Incl.

- Rent: \$1300/mo - Apprx. 219sf private office w/ shared common area
- Use Types: Professional Office, Medical Office, Behavioral Therapy
- Total Size: Apprx. 1122sf with shared waiting area, kitchen and bathroom
- Zoning: General Commercial – Conditional Use (GC-CU)
- Delivery: Immediate
- Visibility: Preston Plaza | Prestigious and convenient location
- Term: Original lease ends January 6, 2027. Flexible term length considered
- Access: Off Cary Parkway

Drew Ludlow
919-818-8998
drew@espcr.com



ESPCRE
ESP COMMERCIAL REALTY

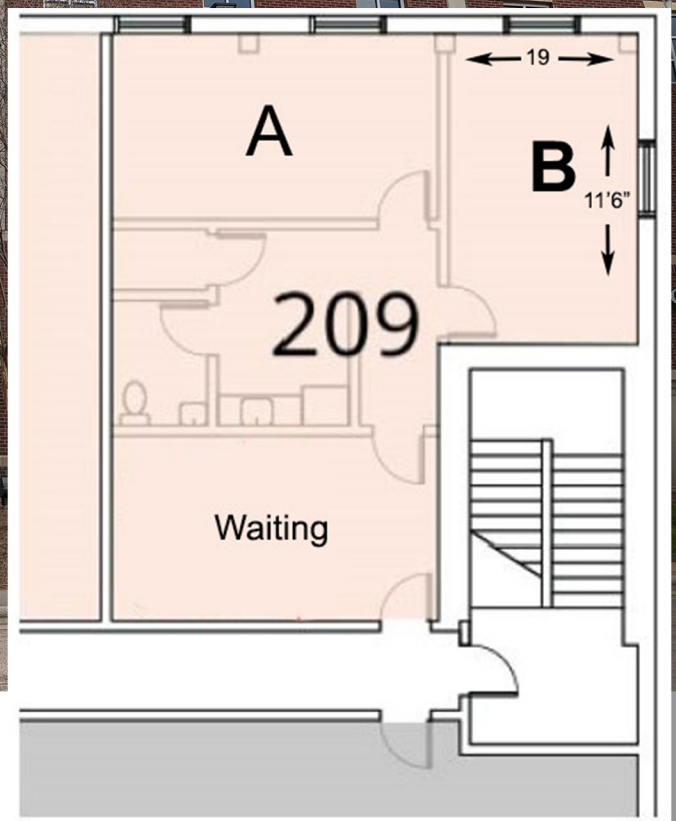
3701 NW Cary Prkwy, Ste 209B

Cary, NC 27513

SUBLEASE

PROPERTY INFORMATION

\$1300/mo - approx. 219sf fully furnished private office (Office B) available for sublease within a shared two-office professional suite (approx. 1,122 SF total). Full-service, all-inclusive rent includes electric, water, high-speed internet, shared waiting area, kitchenette, restroom, coffee, and fridge. Turnkey, move-in ready. Sublease term. through January 2027; flexible term lengths considered.



Drew Ludlow
919-818-8998
drew@espcr.com



ESPCRE
ESP COMMERCIAL REALTY