

**FOR SUBLEASE
NEGOTIABLE**



275 WANEKA PKWY

Lafayette, CO 80026

PROPERTY HIGHLIGHTS

- - Spacious 3,400 SF retail strip center
- - Open floor plan for versatile use
- - Convenient roll-up door for easy access
- - Great central location in Lafayette



AVAILABLE SF
3,400 SF



PARKING
8 SPACES



YEAR BUILT
1997



ZONING
C1

PROPERTY DESCRIPTION

Located at 275 Waneke Parkway in Lafayette, CO, this 3,400 SF retail strip center offers a prime sublease opportunity. Boasting a well-located position, the property features an open floor plan and a convenient roll-up door, making it an ideal space for retail or commercial use. With ample space and a versatile layout, this property presents an excellent opportunity for businesses looking to establish a presence in this thriving area. Don't miss the chance to position your business in this sought-after location and take advantage of all that this property has to offer.

All information contained herein has been obtained from sources we believe to be reliable and is subject to errors, omissions, change of price, rental, prior sale, and withdrawal without notice. Any projections, opinions or estimates are subject to uncertainty and do not signify current or future property performance. No warranty or representation, express or implied, is made as to the accuracy of the information contained herein. We encourage verification of all information prior to making financial decisions.



ADDITIONAL PHOTOS



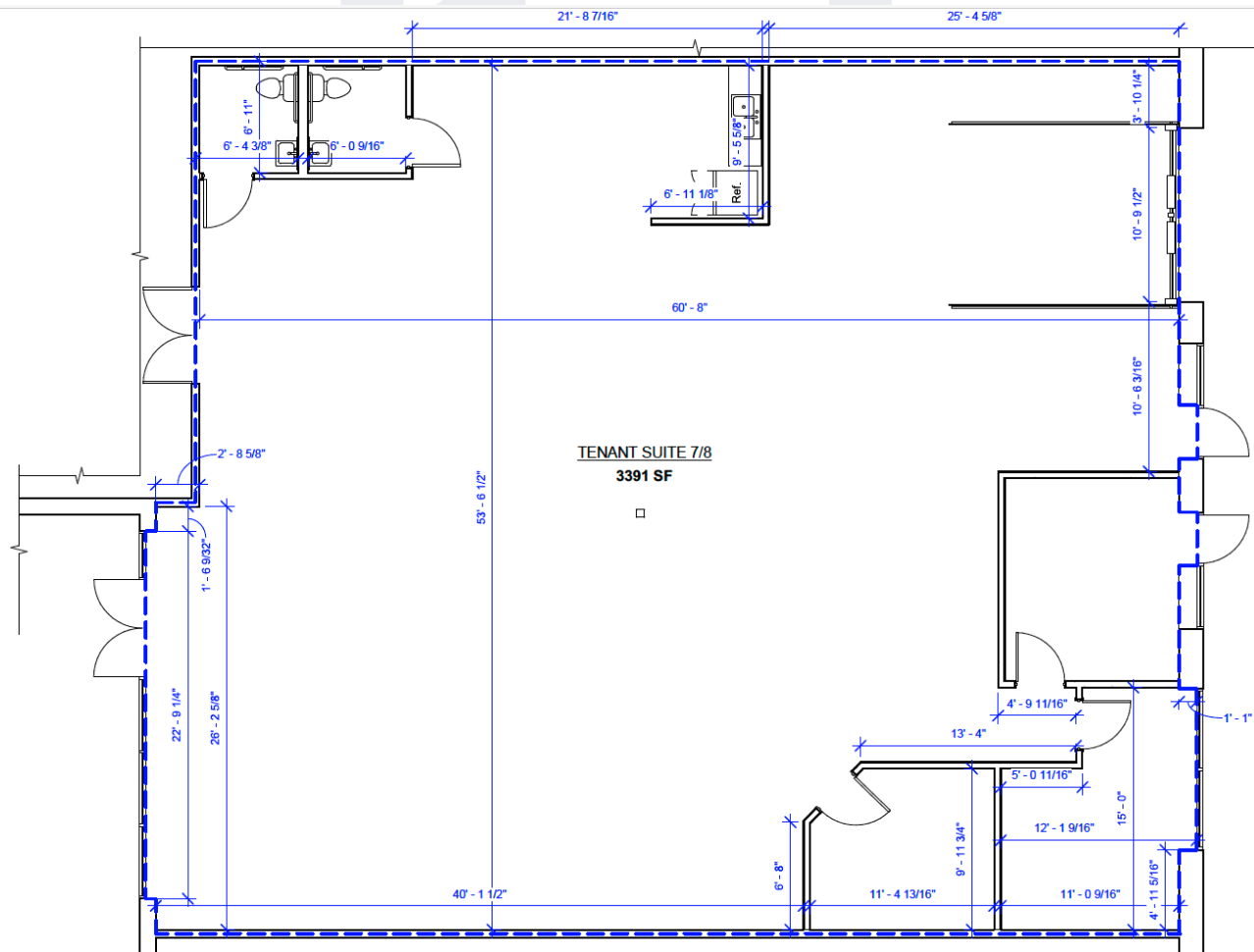
STEVE MASZTALER

303.229.3871

smasztaler@madisoncommercial.com

**MADISON
COMMERCIAL
PROPERTIES**

FLOOR PLANS



STEVE MASZTALER

303.229.3871

smasztaler@madisoncommercial.com



LOCATION MAP

