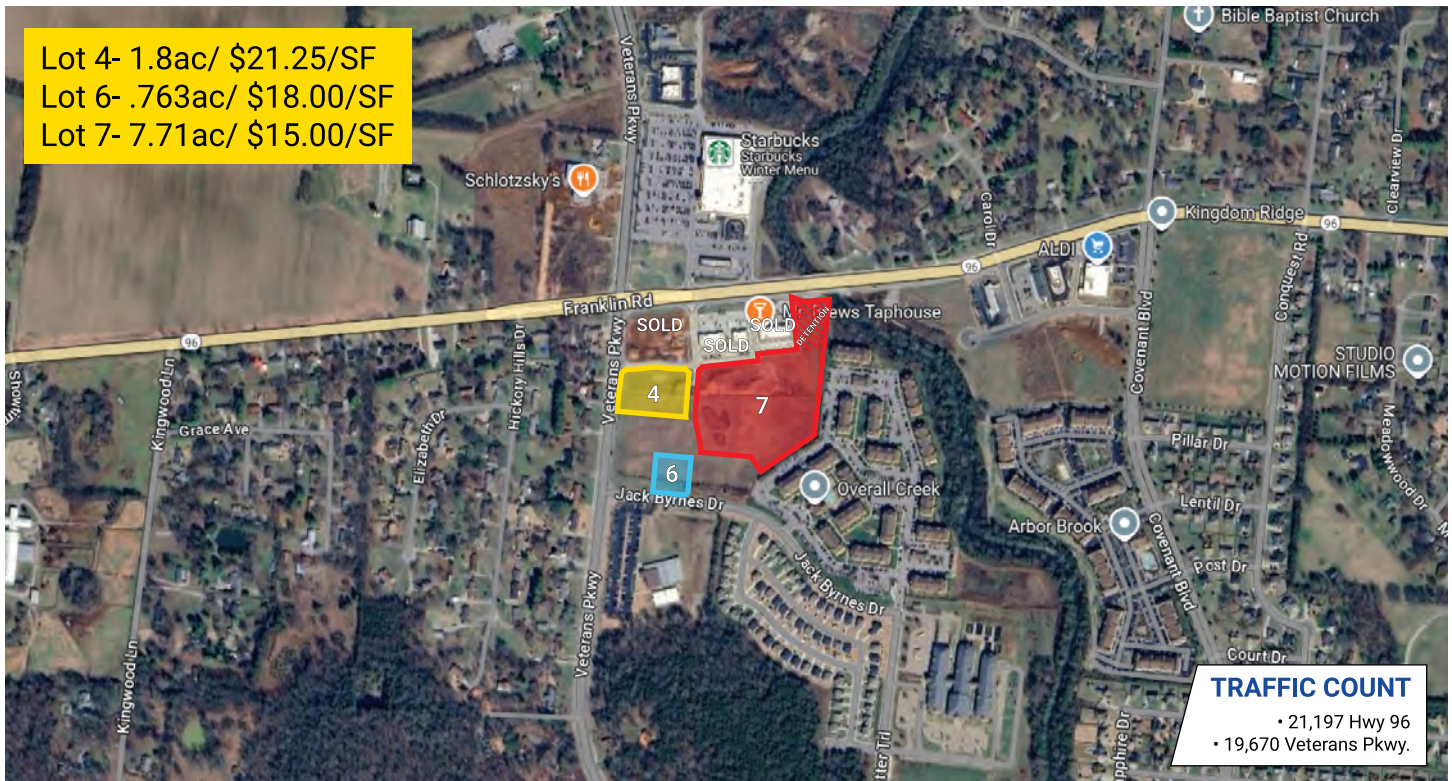


Kingdom Crest Commercial

MURFREESBORO, TENNESSEE 37128



developments | real estate | construction
615-896-0000



Lot 4- 1.8ac/ \$21.25/SF
Lot 6- .763ac/ \$18.00/SF
Lot 7- 7.71ac/ \$15.00/SF

TRAFFIC COUNT

• 21,197 Hwy 96
• 19,670 Veterans Pkwy.

Acres: 10.273 +/-
Structures: N/A
Amenities: N/A
Road Frontage: 455 ft. +/-
Property Type: Land
Zoning: Commercial Hwy.

PROPERTY HIGHLIGHTS

- Near Circle K and Dunkin' Donuts
- Easy Access to I-840, I-24, and Hwy 96
- Approx. 30 minutes to Nashville Airport



DEMOGRAPHIC SNAPSHOT

RUTHERFORD COUNTY

2024 Population Estimate	373,520
2024 Median HH Income	\$78,291
2024 Number of Households	122,510



615-896-0000

www.swansondevelopments.com

The information herein has been obtained from sources believed to be reliable. There is no guarantee, warranty or representation that the information herein is accurate. Any projections, opinions, assumptions, or estimates used are for example only and do not represent the current or future performance or value of the property. Property location imagery provided by Google Maps.