



Office

Fairway Corporate Center III

14645 NW 77th Avenue | Miami Lakes, FL 33014

For More Information

Richard Bamonte

+1 305 205 8569

rbamonte@naimiami.com

Robert Eckstein

+1 786 367 3569

reckstein@naimiami.com

OFFICE SPACE FOR SUBLEASE

Space Available: \pm 5,129 to \pm 13,863 RSF on the 2nd Floor

Lease Rate & Type: **Negotiable**

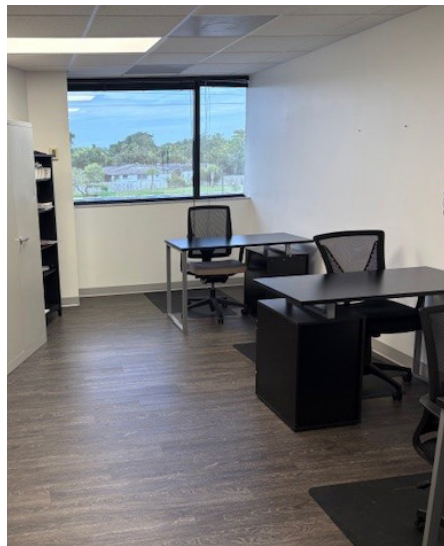
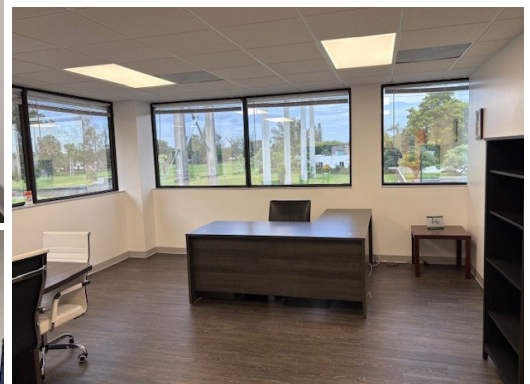
Sublease Term: Up to lease the termination date on
December 31st, 2032

For more listings visit: naimia-ftl.com/properties

NAI Miami
Fort Lauderdale

Fairway Corporate Center III

14645 NW 77th Avenue | Miami Lakes, FL 33014



Property Features

- Two-story suburban office building
- Professional office in the heart of Miami Lakes
- Abundant parking
- Furniture may be included

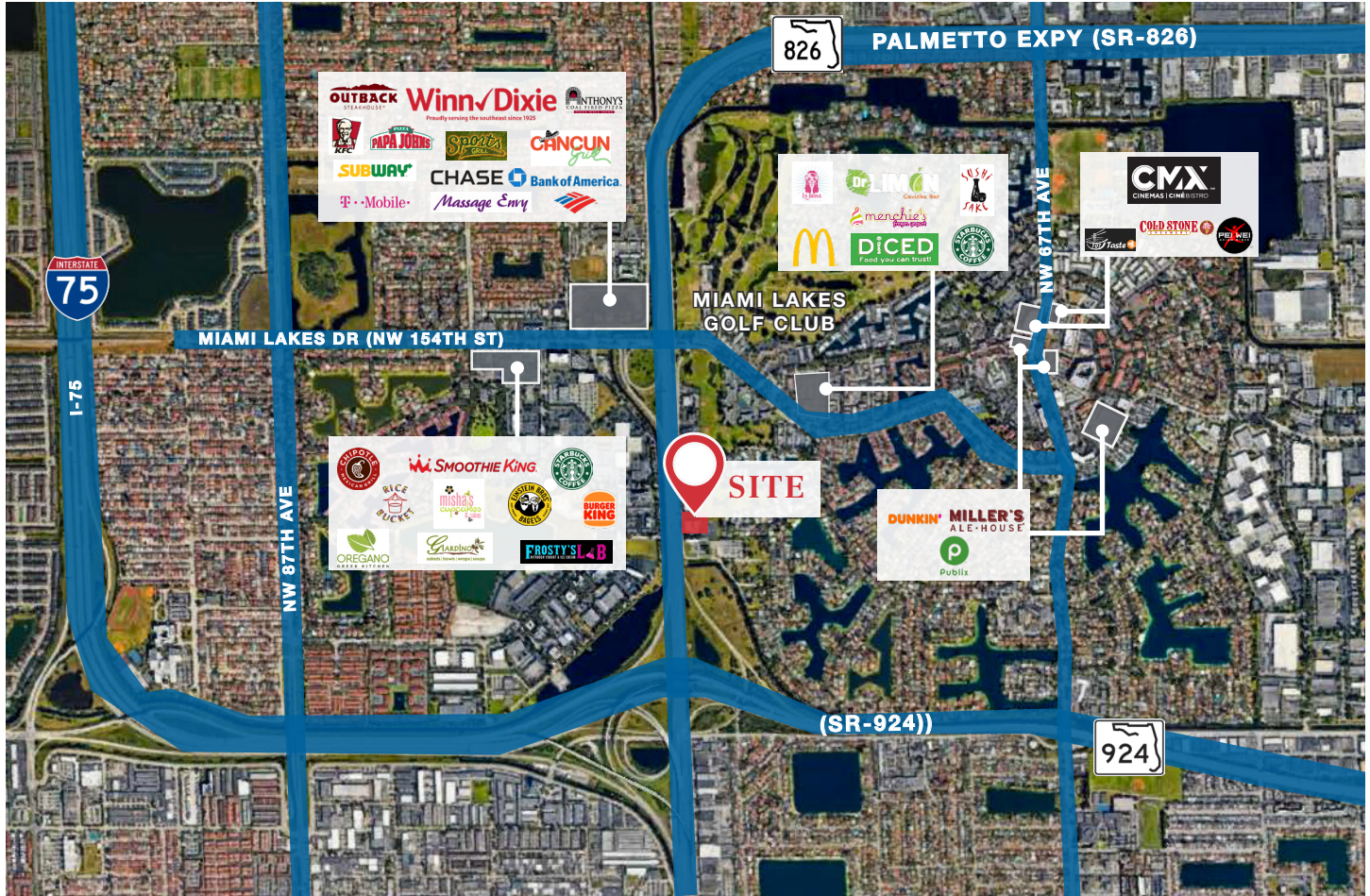
Availability

Suite 202 & 203	± 8,734 RSF	Available Immediately
Suite 204	± 5,129 RSF	Available Immediately

Fairway Corporate Center III

14645 NW 77th Avenue | Miami Lakes, FL 33014

Convenient to Shops, Restaurant & Services



Location Features

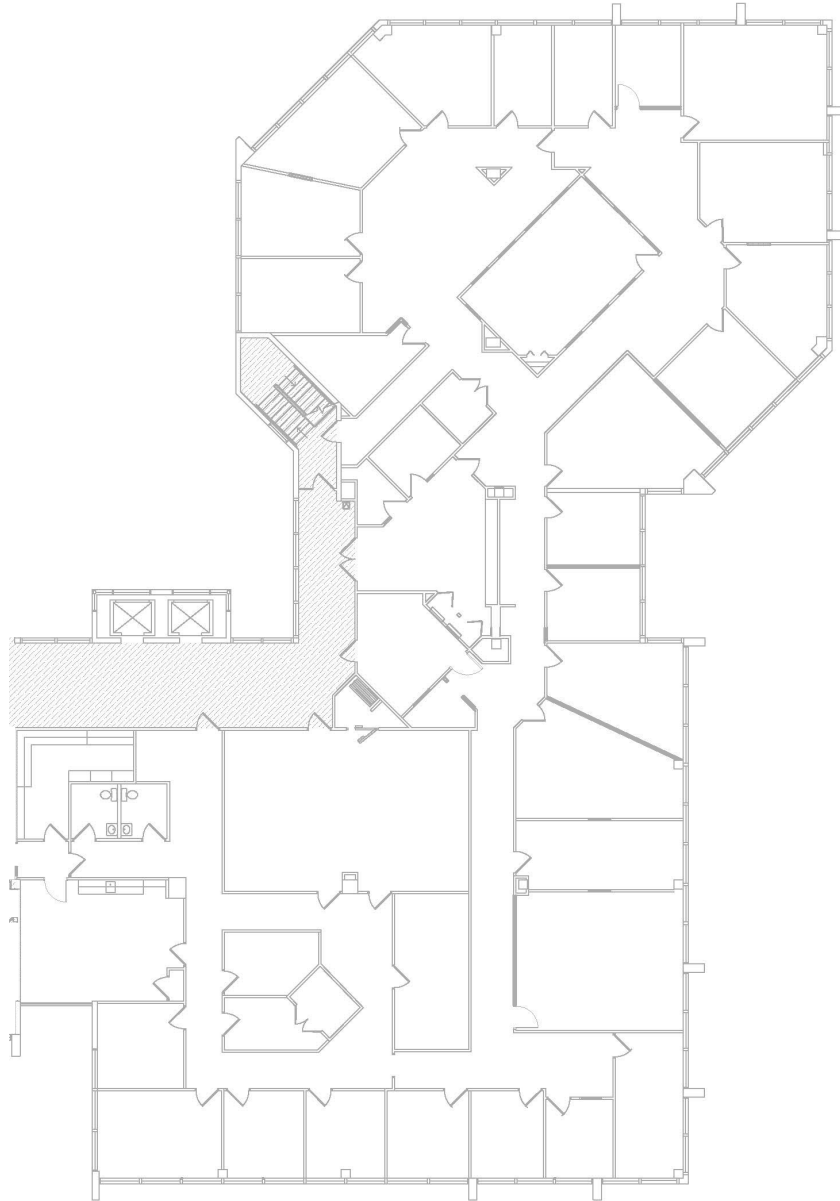
- Easy access to major highways like the Palmetto Expressway (SR-826) and I-75
- Minutes away from restaurants, shops, and entertainment
- Strong residential density
- Near Opa Locka Executive Airport (OPF) and Miami International Airport (MIA)



Fairway Corporate Center III

14645 NW 77th Avenue | Miami Lakes, FL 33014

Suite 202 & 203 ± 8,734 RSF | Suite 204 ± 5,129 RSF



For More Information

Richard Bamonte

+1 305 205 8569

rbamonte@naimiami.com

Robert Eckstein

+1 786 367 3569

reckstein@naimiami.com



📍 9655 South Dixie Highway, Suite 300, Miami, FL 33156

📞 +1 305 938 4000

🌐 naimia-ftl.com

NO WARRANTY OR REPRESENTATION, EXPRESS OR IMPLIED, IS MADE AS TO THE ACCURACY OF THE INFORMATION CONTAINED HEREIN, AND THE SAME IS SUBMITTED SUBJECT TO ERRORS, OMISSIONS, CHANGE OF PRICE, RENTAL OR OTHER CONDITIONS, PRIOR SALE, LEASE OR FINANCING, OR WITHDRAWAL WITHOUT NOTICE, AND OF ANY SPECIAL LISTING CONDITIONS IMPOSED BY OUR PRINCIPALS NO WARRANTIES OR REPRESENTATIONS ARE MADE AS TO THE CONDITION OF THE PROPERTY OR ANY HAZARDS CONTAINED THEREIN ARE ANY TO BE IMPLIED.