

5.74 ACRES OF LAND AVAILABLE

511 MARTIN LUTHER KING BLVD NW, WINTER HAVEN, FL 33881



Andrew Rosenberg
(305) 968 8932
andrew@upsidecre.com
www.upsidecre.com

5.74 ACRES OF LAND AVAILABLE

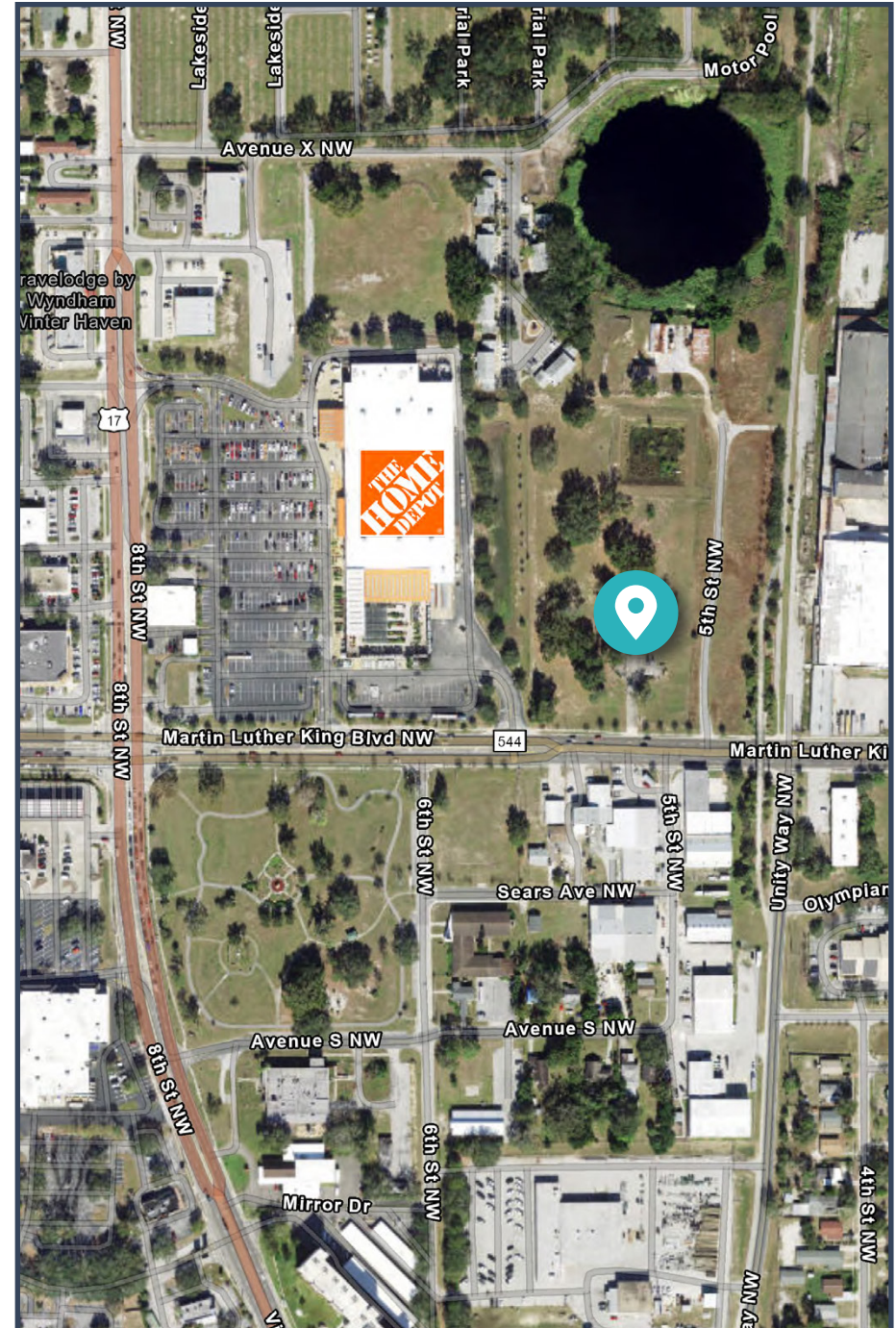
511 MLK BLVD NW, WINTER HAVEN, FL 33881

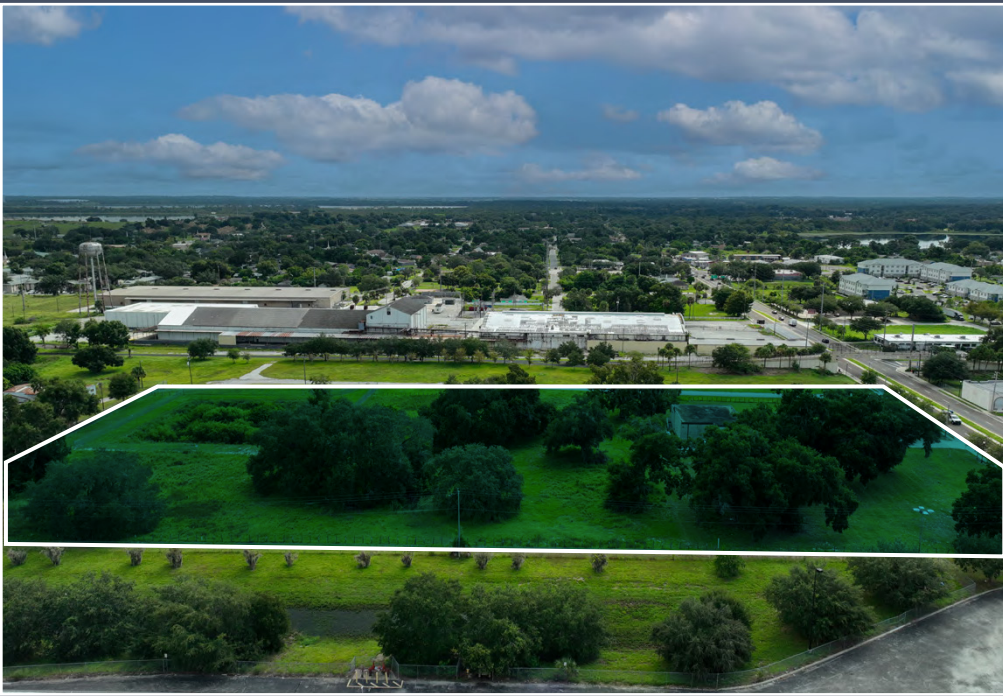
- SIZE:** 250,000 SF / 5.74 Acres
- ZONING:** I-1 (Light Industrial/Office/Warehouse)
- AADT:** 30,000 VPD - MLK Blvd NW
- PRICING:** Upon request
- AVAILABILITY:** Immediate
- HIGHLIGHTS:**
 - Located between Lakeland and Kissimmee with direct access to one of the city's main thoroughfares
 - Adjacent to Home Depot and nearby other national retailers
 - Permitted uses include:

• Industrial Outdoor Storage (IOS)	• Office
• Parking & vehicle storage	• Hotel
• Equipment storage/sales	• Retail
	• Auto Repair/Sales
	• Educational facility
	• Storage

DEMOGRAPHICS (1, 3, 5 MILES)

Population	Daytime Population	Average HH Income
6,855	16,857	\$64,913
48,693	79,487	\$71,567
101,314	171,718	\$78,759










FOR INQUIRIES, CONTACT:

Andrew Rosenberg
President

 (305) 968 8932

 andrew@upsidecre.com

 www.upsidecre.com