

## REFRESHED OFFICE SPACE



700-790 Ken Mar Industrial Pkwy.  
Broadview Hts., OH

### Property Features

- Two Suites Available:
  - Suite 710: 450 SF - Two Private Offices
  - Suite 712: 450 SF - One Private Office
- Ample Parking
- Within a Well Established Business Park
- Located 1/2 Mile from Rt.82 / I-77
- \$11 psf NNN



For more information:

**Noah Broadbent, CCIM**  
+1 440 708 8578  
noah.broadbent@naipvc.com

**Joe Hauman, CCIM**  
+1 440 591 3723  
joe.hauman@naipvc.com

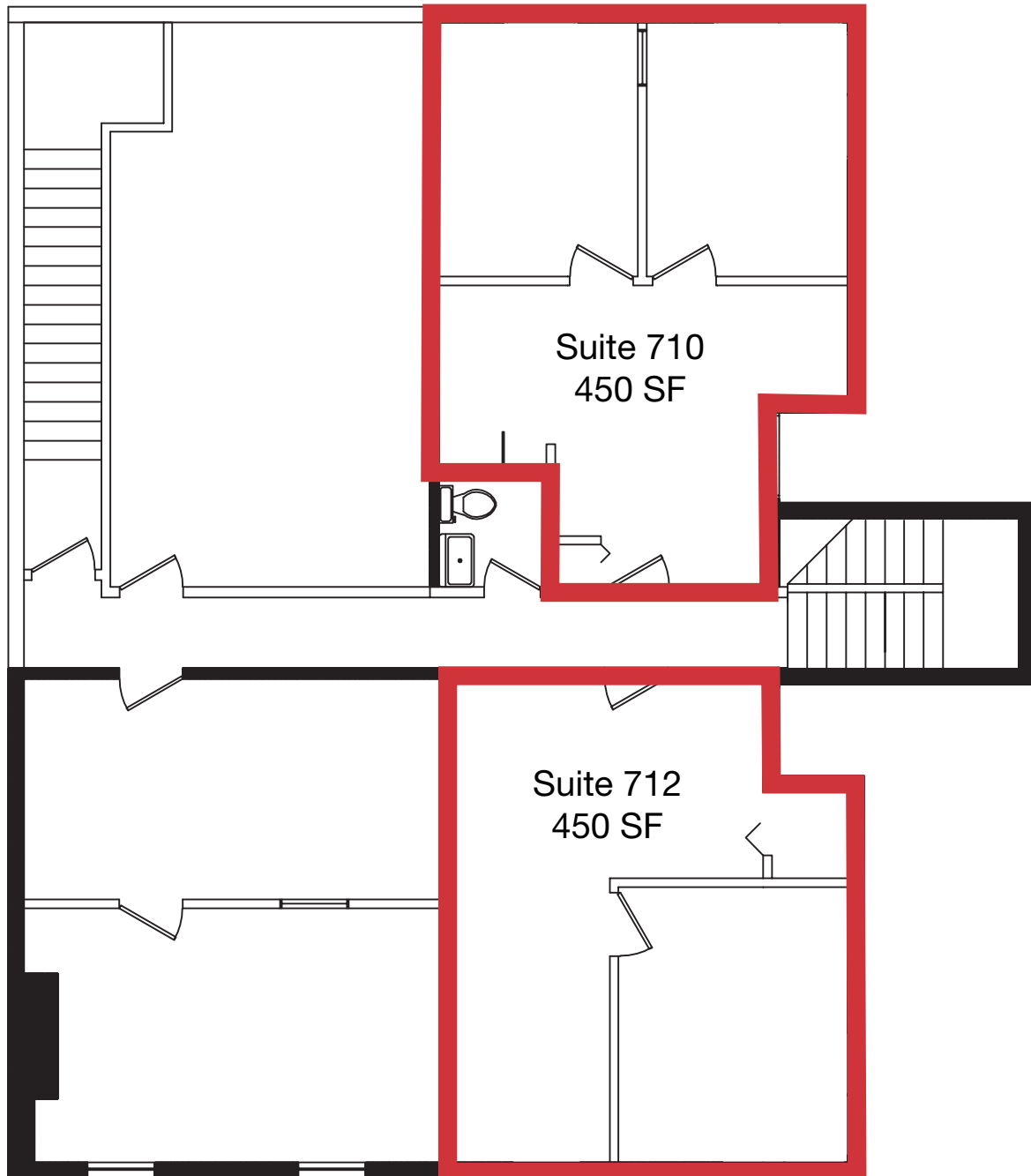
**Jeffrey Calig, CCIM**  
+1 216 455 0910  
jcalig@naipvc.com

NO WARRANTY OR REPRESENTATION, EXPRESS OR IMPLIED, IS MADE AS TO THE ACCURACY OF THE INFORMATION CONTAINED HEREIN, AND THE SAME IS SUBMITTED SUBJECT TO ERRORS, OMISSIONS, CHANGE OF PRICE, RENTAL OR OTHER CONDITIONS, PRIOR SALE, LEASE OR FINANCING, OR WITHDRAWAL WITHOUT NOTICE, AND OF ANY SPECIAL LISTING CONDITIONS IMPOSED BY OUR PRINCIPALS NO WARRANTIES OR REPRESENTATIONS ARE MADE AS TO THE CONDITION OF THE PROPERTY OR ANY HAZARDS CONTAINED THEREIN ARE ANY TO BE IMPLIED.

6060 Rockside Woods Blvd., Suite 402  
Independence, Ohio 44131  
+1 216 831 3310  
naipvc.com

# FOR LEASE

## Floor Plan



Noah Broadbent, CCIM\

+1 440 708 8578

noah.broadbent@naipvc.com

Joe Hauman, CCIM

+1 440 591 3723

joe.hauman@naipvc.com

Jeffrey Calig, CCIM

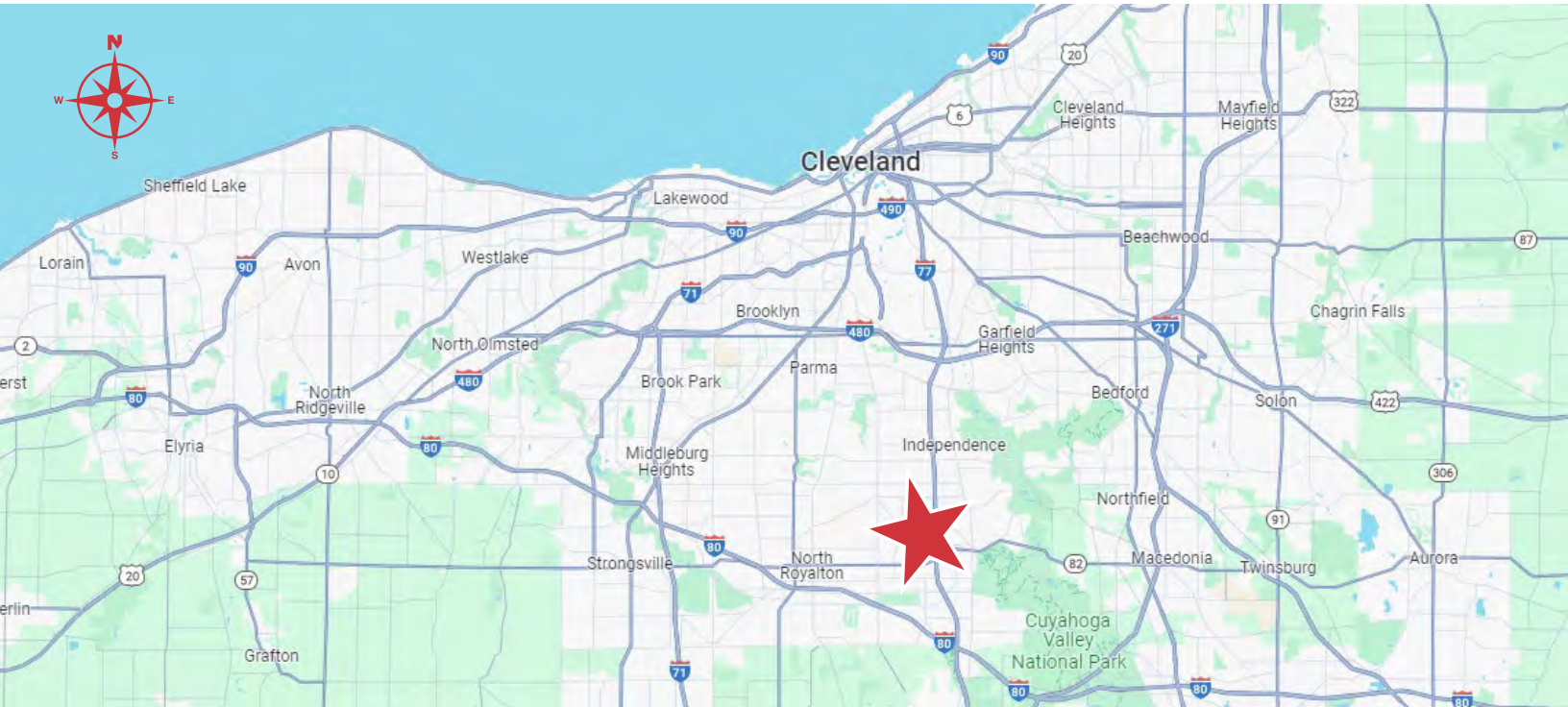
+1 216 455 0910

jcalig@naipvc.com



# FOR LEASE

## Property Location



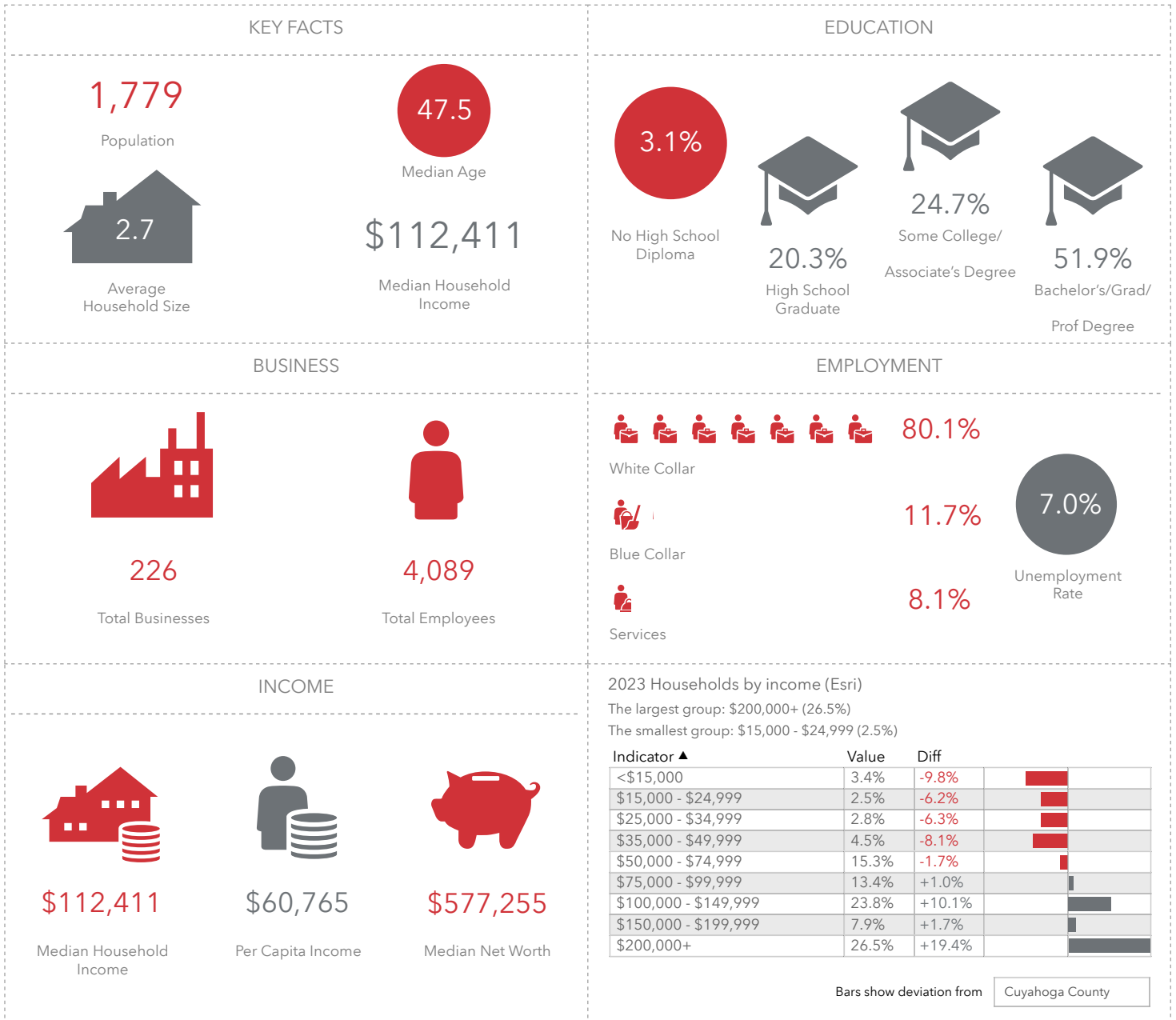
Noah Broadbent, CCIM  
+1 440 708 8578  
noah.broadbent@naipvc.com

Joe Hauman, CCIM  
+1 440 591 3723  
joe.hauman@naipvc.com

Jeffrey Calig, CCIM  
+1 216 455 0910  
jcalig@naipvc.com

# DEMOGRAPHICS

## 1 Mile Radius



**Source:** This infographic contains data provided by Esri (2023, 2028), Esri-Data Axle (2023). © 2024 Esri

Noah Broadbent, CCIM  
+1 440 708 8578  
noah.broadbent@naipvc.com

Joe Hauman, CCIM  
+1 440 591 3723  
joe.hauman@naipvc.com

Jeffrey Calig, CCIM  
+1 216 455 0910  
jcalig@naipvc.com



# DEMOGRAPHICS

## 5 Mile Radius

### KEY FACTS

83,627

Population



2.4

Average Household Size

48.7

Median Age

\$93,395

Median Household Income

### EDUCATION

3.3%

No High School Diploma



24.2%  
High School Graduate



26.3%  
Some College/  
Associate's Degree



46.2%  
Bachelor's/Grad/  
Prof Degree

### BUSINESS



2,709

Total Businesses



35,599

Total Employees

### EMPLOYMENT



72.1%

White Collar



17.0%

Blue Collar



10.9%

Services



3.2%

Unemployment Rate

### INCOME



\$93,395

Median Household Income



\$54,286

Per Capita Income



\$367,793

Median Net Worth

### 2023 Households by income (Esri)

The largest group: \$100,000 - \$149,999 (21.4%)

The smallest group: <\$15,000 (4.2%)

Indicator ▲	Value	Diff	
<\$15,000	4.2%	-9.0%	
\$15,000 - \$24,999	4.2%	-4.5%	
\$25,000 - \$34,999	5.0%	-4.1%	
\$35,000 - \$49,999	8.7%	-3.9%	
\$50,000 - \$74,999	16.5%	-0.5%	
\$75,000 - \$99,999	14.6%	+2.2%	
\$100,000 - \$149,999	21.4%	+7.7%	
\$150,000 - \$199,999	9.9%	+3.7%	
\$200,000+	15.6%	+8.5%	

Bars show deviation from

Cuyahoga County

**Source:** This infographic contains data provided by Esri (2023, 2028), Esri-Data Axle (2023). © 2024 Esri

Noah Broadbent, CCIM  
+1 440 708 8578  
noah.broadbent@naipvc.com

Joe Hauman, CCIM  
+1 440 591 3723  
joe.hauman@naipvc.com

Jeffrey Calig, CCIM  
+1 216 455 0910  
jcalig@naipvc.com