



**EQT | EXETER**



# 555 Flinthill Road | King of Prussia, PA

Building Size: 112,500 SF | Available Size: 112,500 SF

VISIT [EQTEXETER.COM](http://EQTEXETER.COM)

# 555 Flinthill Road

King of Prussia, PA

Building Size: 112,500 SF | Building Availability: 112,500 SF

## PROPERTY SPECIFICATIONS

- » 112,500 SF Warehouse
- » ±2,850 SF Office Space
- » 36' Clear Height
- » 7" Thick Unreinforced Warehouse Floor Slab
- » Solar Ready Roof
- » 16 Dock Positions Equipped with 40,000 lb Levelers
- » 2 (12'x14') Drive-in Doors
- » TPO Roofing System

- » 4,000 Amp Electrical Service
- » LED Lighting to Maintain 30 Average Footcandles
- » ESFR Sprinkler System
- » 81 Auto Spaces

## ZONING

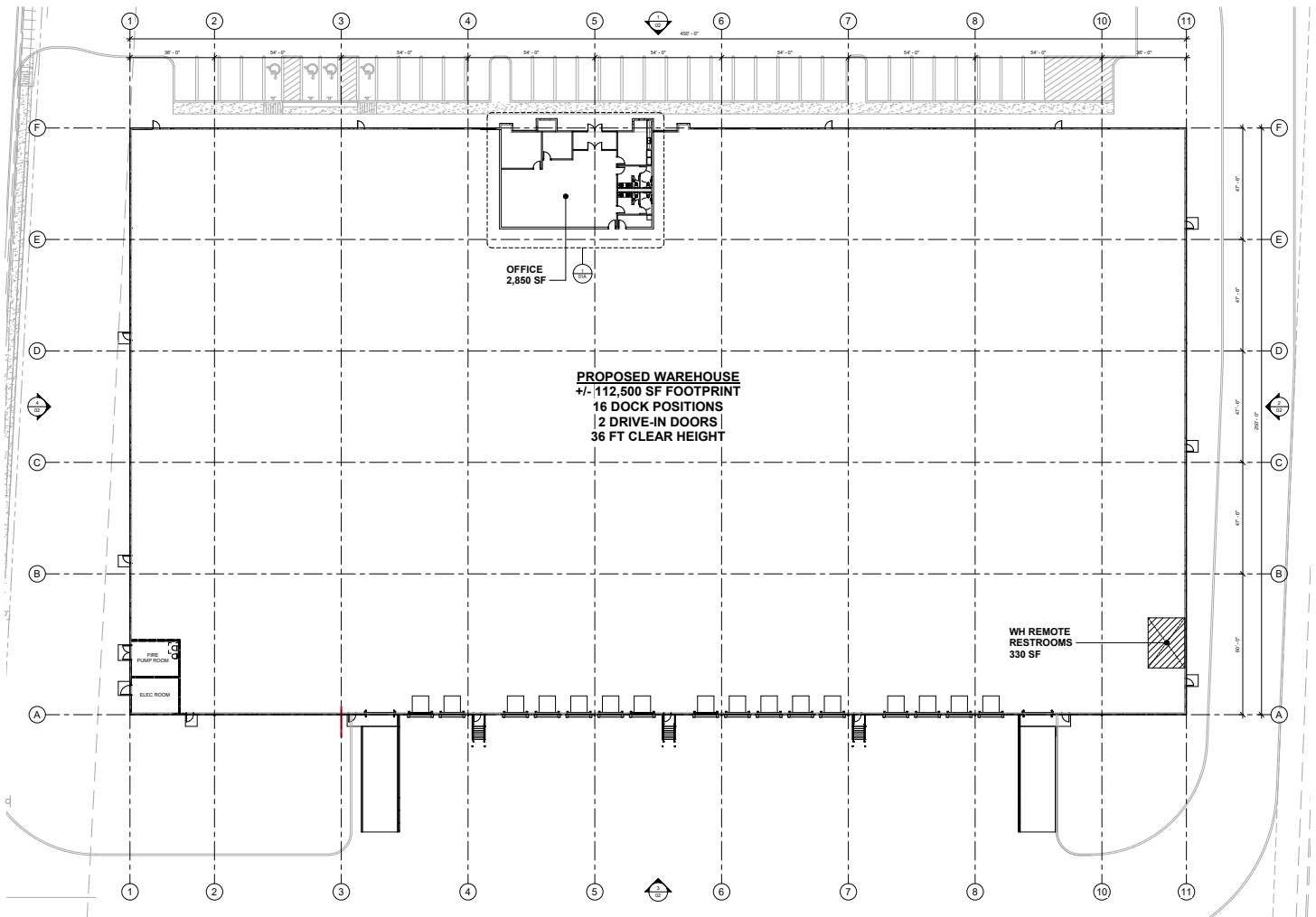
- » Current Zoning: Limited Industrial (Light Industrial Permitted Uses: Warehousing, Distribution, Manufacturing, Processing, Cold Storage)



# 555 Flinthill Road

King of Prussia, PA

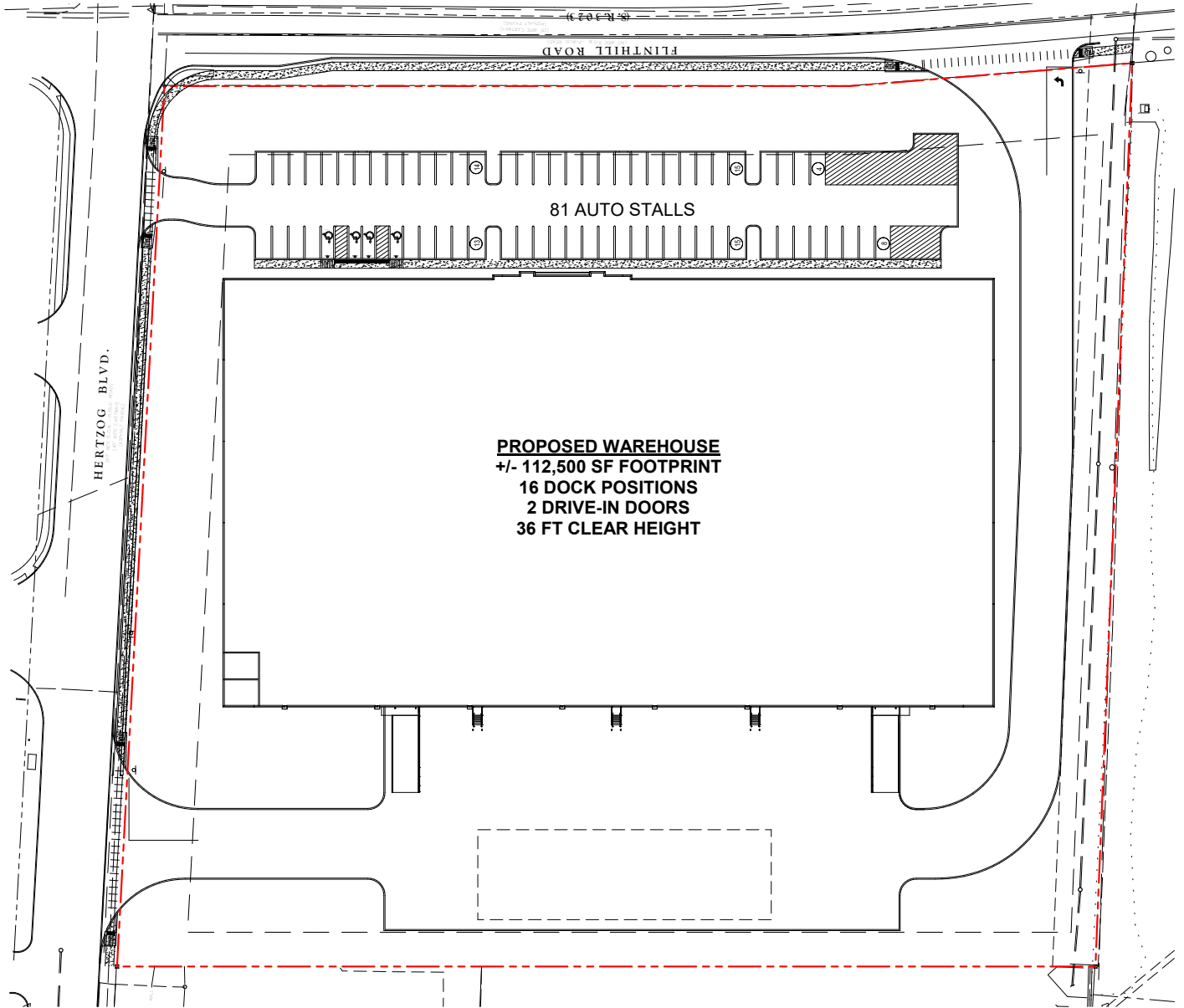
Building Size: 112,500 SF | Building Availability: 112,500 SF



# 555 Flinthill Road

King of Prussia, PA

Building Size: 112,500 SF | Building Availability: 112,500 SF

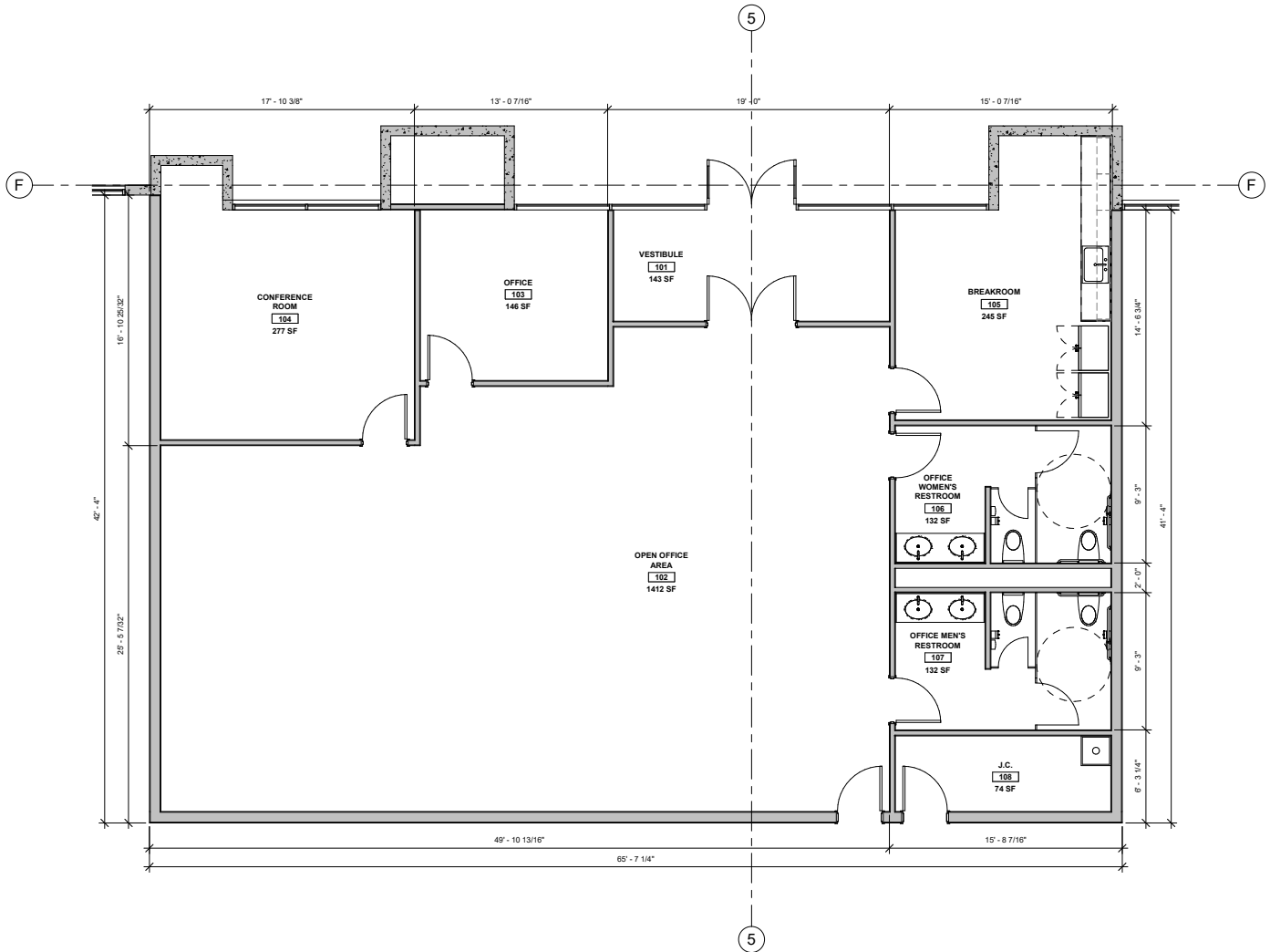


# 555 Flinthill Road

King of Prussia, PA

Building Size: 112,500 SF | Building Availability: 112,500 SF

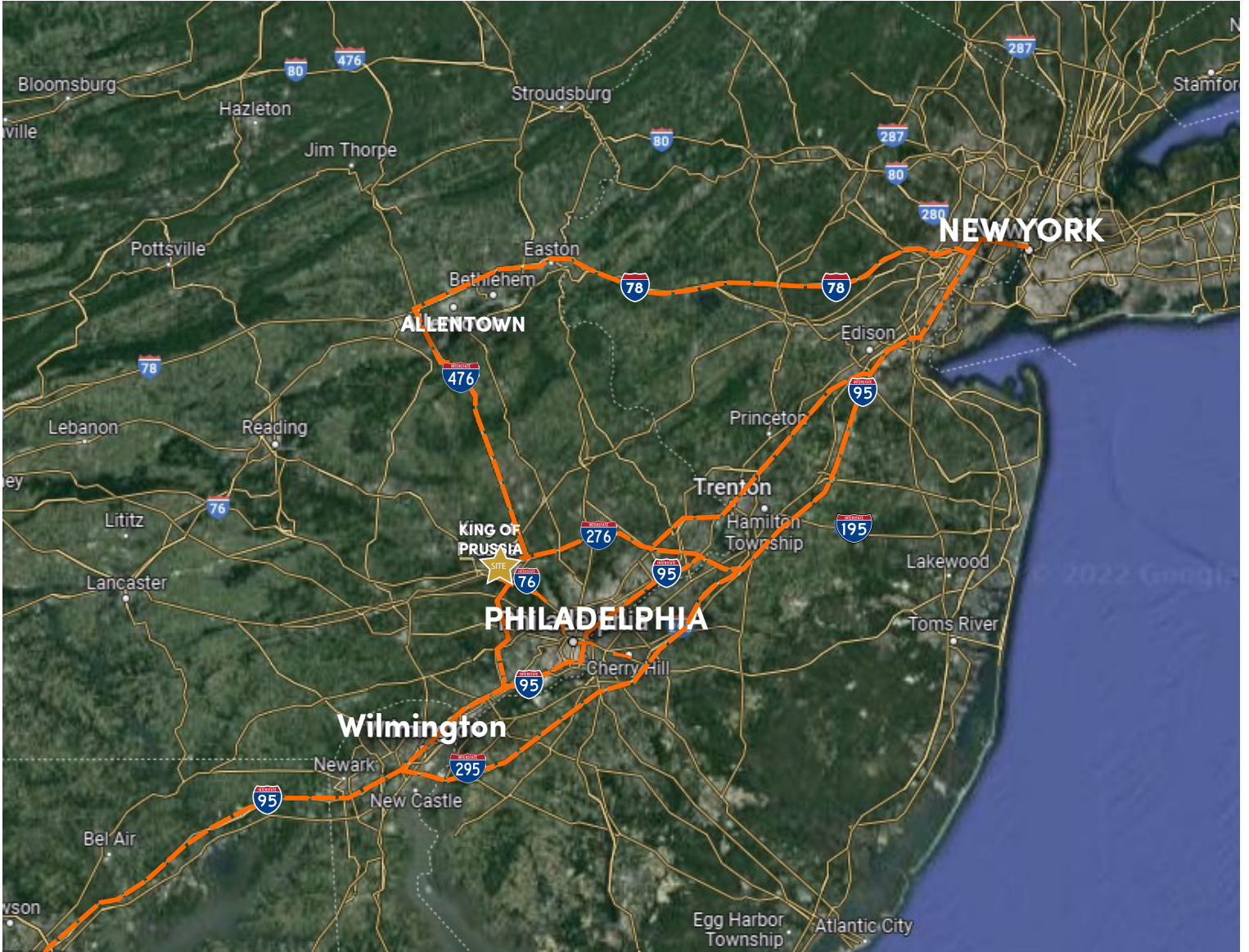
## ±2,850 SF OFFICE SPACE



# 555 Flinthill Road

King of Prussia, PA

**Building Size:** 112,500 SF | **Building Availability:** 112,500 SF



## KEY DISTANCES:

- » Philadelphia, PA: 16 miles
- » Port of Philadelphia: 20.3 miles
- » Philadelphia International Airport: 24 miles
- » Lehigh Valley, PA: 49.2 miles
- » New York, NY: 104 miles
- » Port of Elizabeth: 96.1 miles
- » Boston, MA: 316 miles
- » Washington D.C.: 145 miles