

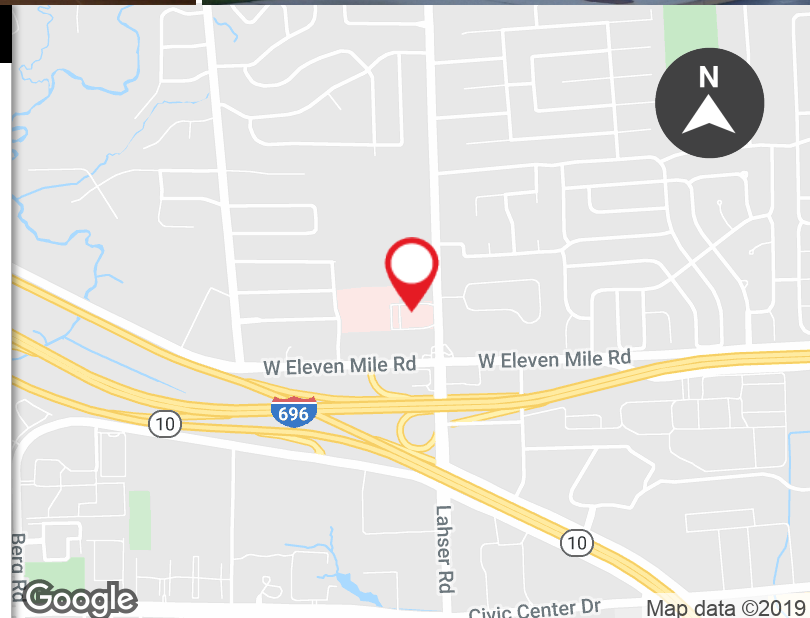
FOR LEASE

LAHSER MEDICAL CAMPUS
27177-27211 LAHSER RD
SOUTHFIELD, MI 48034



PROPERTY FEATURES:

- Exceptional medical campus in central Southfield location
- Suites available from 903 SF to 12,178 SF
- Great location with direct access to I-696 and Northwestern Highway
- New ownership and management
- Immediate occupancy
- Leasehold improvements available
- Lobby renovations recently completed



FOR MORE INFORMATION PLEASE CONTACT:

ROBERT MOON
robert.moon@freg.com

248.324.2000

eCODE 104

FOR LEASE

LAHSER MEDICAL CAMPUS
27177-27211 LAHSER RD
SOUTHFIELD, MI 48034



AVAILABLE SUITES

SPACE	SPACE USE	LEASE RATE	LEASE TYPE	SIZE (SF)	TERM
SUITE I-201	Medical	\$18.00 - 21.00 SF/yr	Gross	903 SF	Negotiable
SUITE II-250 A	Medical	\$18.00 - 21.00 SF/yr	Gross	2,671 SF	Negotiable
SUITE III-200	Medical	\$18.00 - 21.00 SF/yr	Gross	5,473 SF	Negotiable
SUITE IV-220	Medical	\$18.00 - 21.00 SF/yr	Gross	2,444 SF	Negotiable
SUITE IV-221	Medical	\$18.00 - 21.00 SF/yr	Gross	1,684 SF	Negotiable
SUITE IV-225	Medical	\$18.00 - 21.00 SF/yr	Gross	1,266 SF	Negotiable

FOR MORE INFORMATION PLEASE CONTACT:

ROBERT MOON robert.moon@freg.com

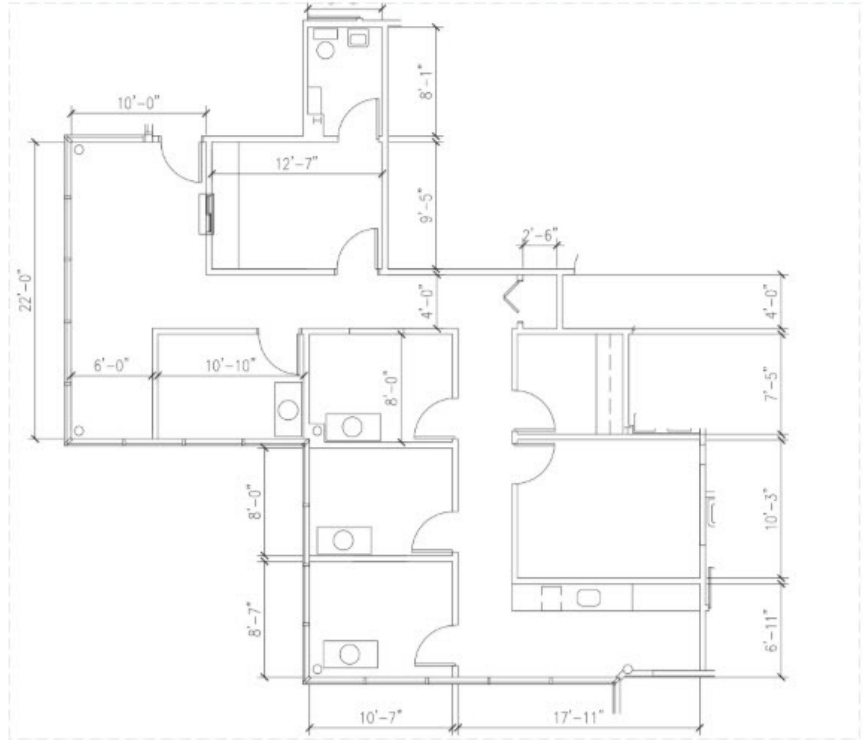
248.324.2000
eCODE 104

FOR LEASE

LAHSER MEDICAL CAMPUS
27177-27211 LAHSER RD
SOUTHFIELD, MI 48034



First Floor



LAHSER MEDICAL IV SUITE 220 — 2,444 SF AVAILABLE

Second Floor



FOR MORE INFORMATION PLEASE CONTACT:

ROBERT MOON robert.moon@freg.com

248.324.2000

eCODE 104