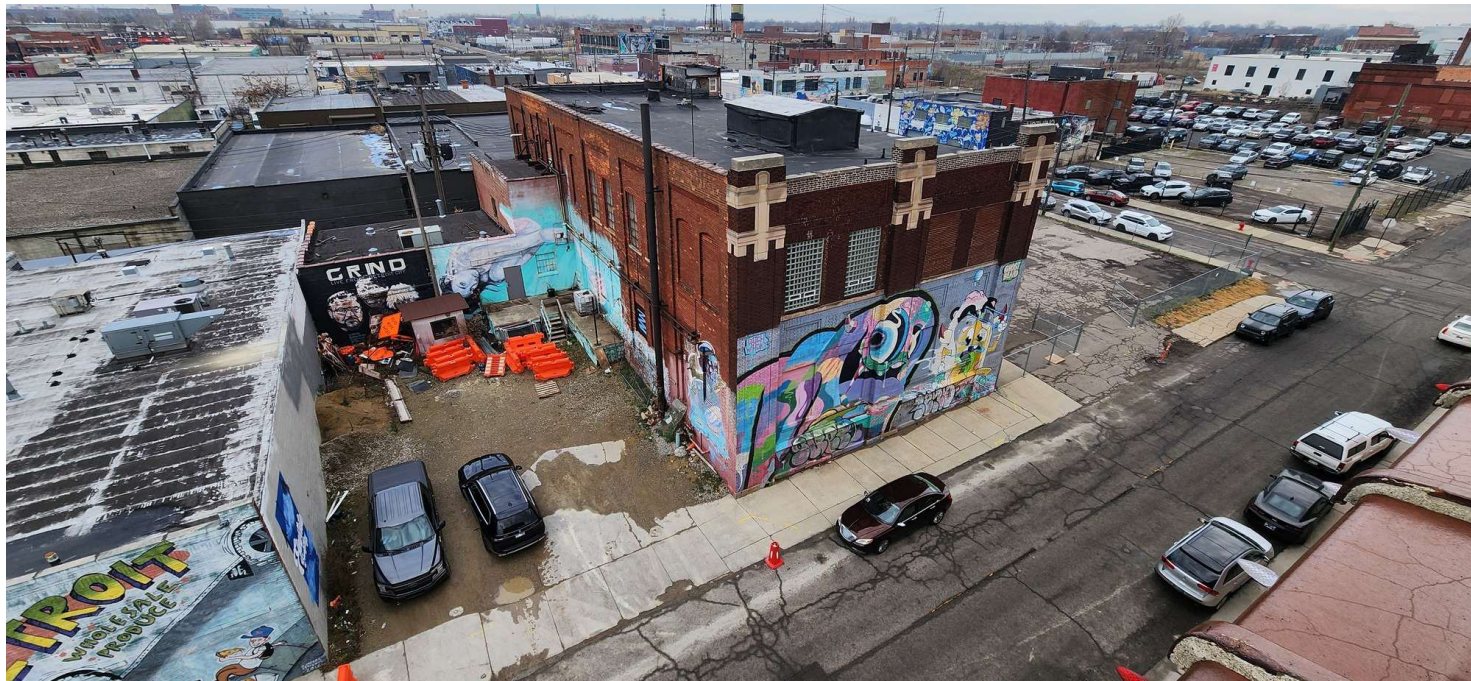


1561 ADELAIDE

1561 ADELAIDE ST., DETROIT, MI 48207



OFFERING SUMMARY

Sale Price:	\$2,325,000
Lease Rate:	\$25.00 SF/yr (NNN)
Available SF:	15,760 SF
Lot Size:	0.46 Acres
Building Size:	15,760 SF

PROPERTY DESCRIPTION

1561 Adelaide Street features two expansive floors of approximately 5,666 square feet each within the main structure, along with a full-height basement offering tall ceilings and flexible potential. The building also includes a 2,640-square-foot right-side wing and a 1,768-square-foot left-side wing, with opportunities to introduce a private courtyard and accommodate ample off-street parking.

LOCATION DESCRIPTION

Eastern Market is a perfect blend of Urban Renaissance and historic grit—where refurbished Victorian brick sheds and vibrant murals fuse within cutting-edge culinary, food and beverage, media, and creative enterprises. The district pulses with energy as long-established produce halls and flower sheds now neighbor tenants like Detroit City Distillery, iHeart Media Detroit, Marrow Detroit Provisions, Sy Ginsberg Deli, Grobbel Meats, Collected Detroit and dozens of others, including galleries, creative offices, makerspaces, breweries, event and performance venues—all injecting fresh momentum into this special district. That fusion of preserved heritage and bold reinvestment makes Eastern Market one of Detroit's most dynamic, opportunity-rich neighborhoods—catching the eye of investors and

1561 ADELAIDE

1561 ADELAIDE ST., DETROIT, MI 48207

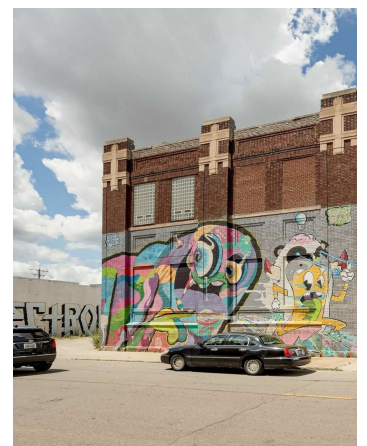
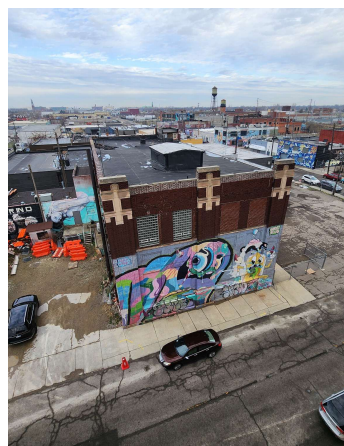
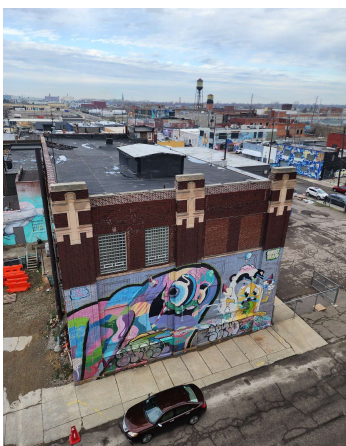
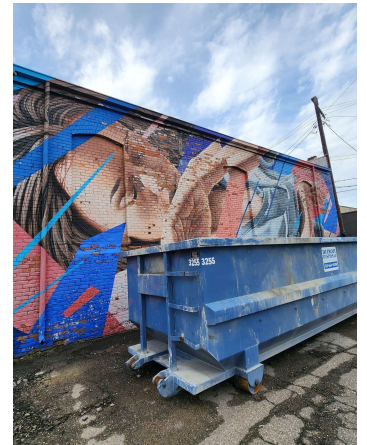
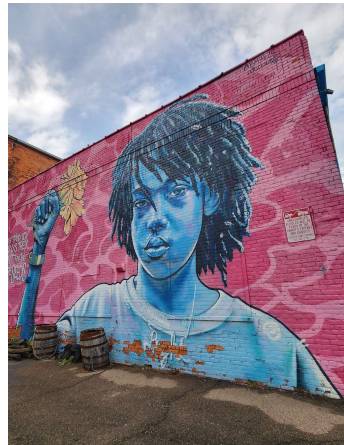
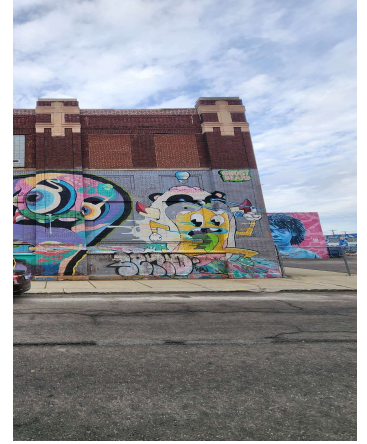
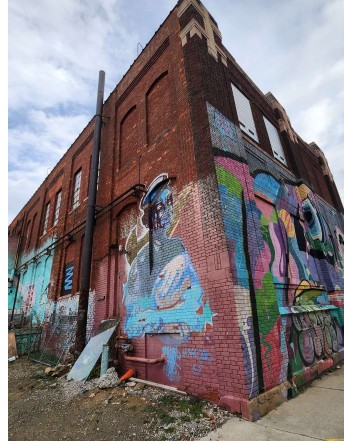
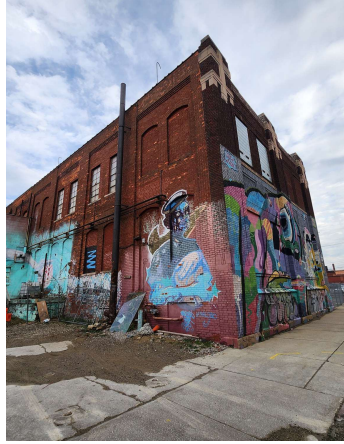
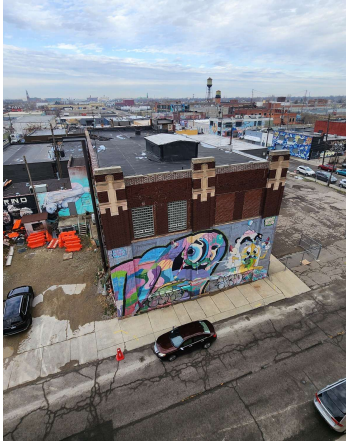


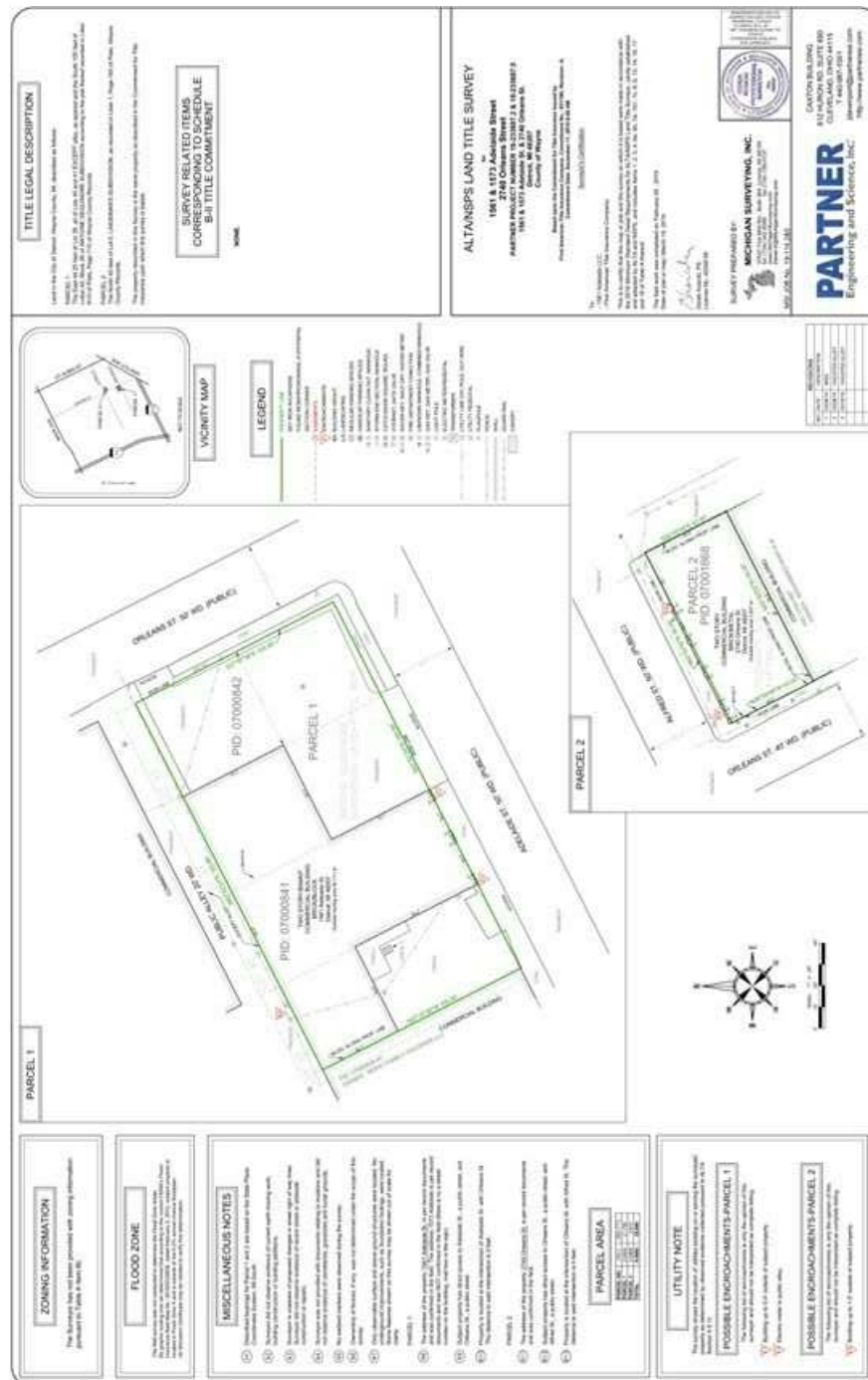
PROPERTY HIGHLIGHTS

- Prime Eastern Market Development Location ~
- Solid Footprint & Square Footage ~ 15,760 SF Total.
- Two floors, full-height basement, and two sizable wings
- Ideal for multi-use Adaptation ~ Entertainment, Creative Office / Studios / F&B
- Historic & Culturally Rich Detroit District ~
- Outdoor & Parking Potential ~ Private courtyard and secure ample off-street parking, a rare asset in the district.
- Development Appeal: Walkable, positioned at the intersection of authenticity and momentum—Eastern Market is one of Detroit's most compelling districts for growth

1561 ADELAIDE

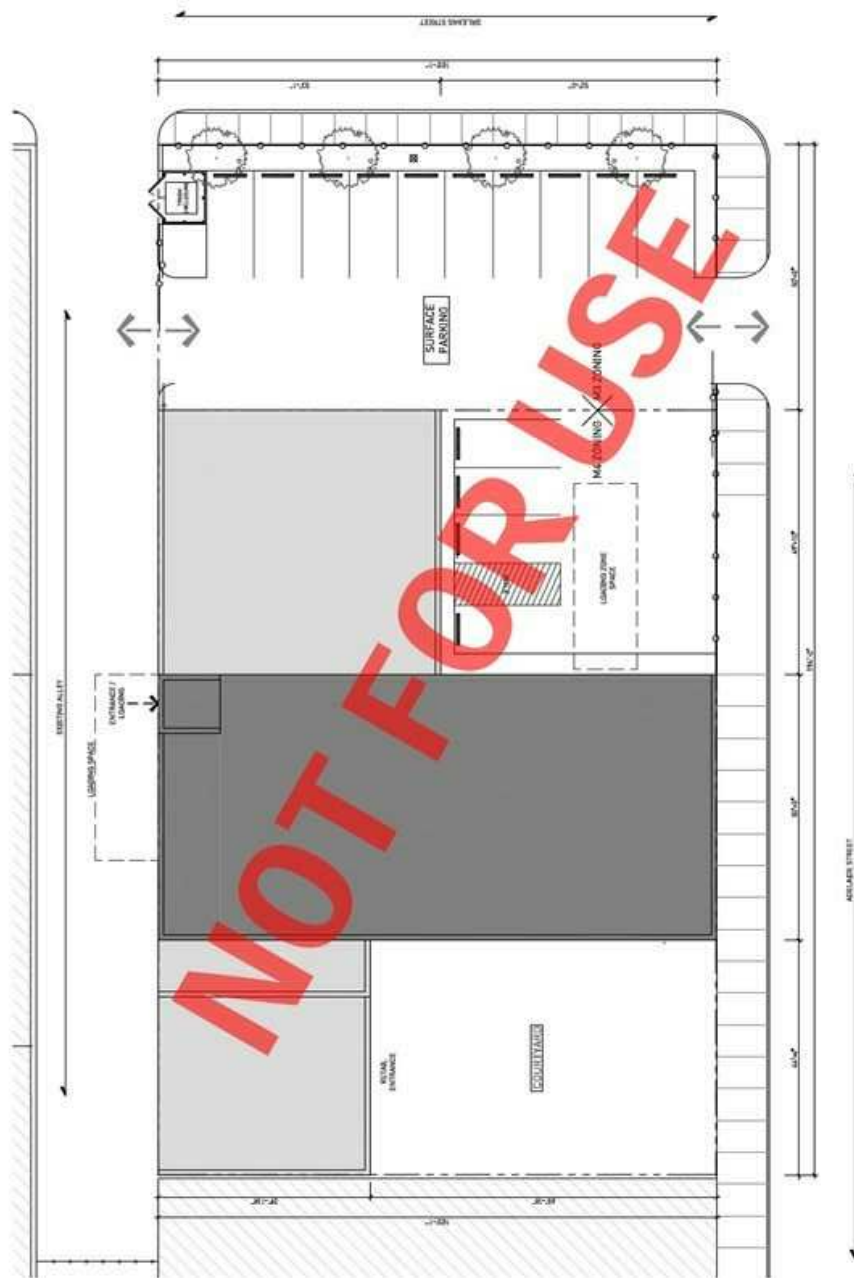
1561 ADELAIDE ST., DETROIT, MI 48207





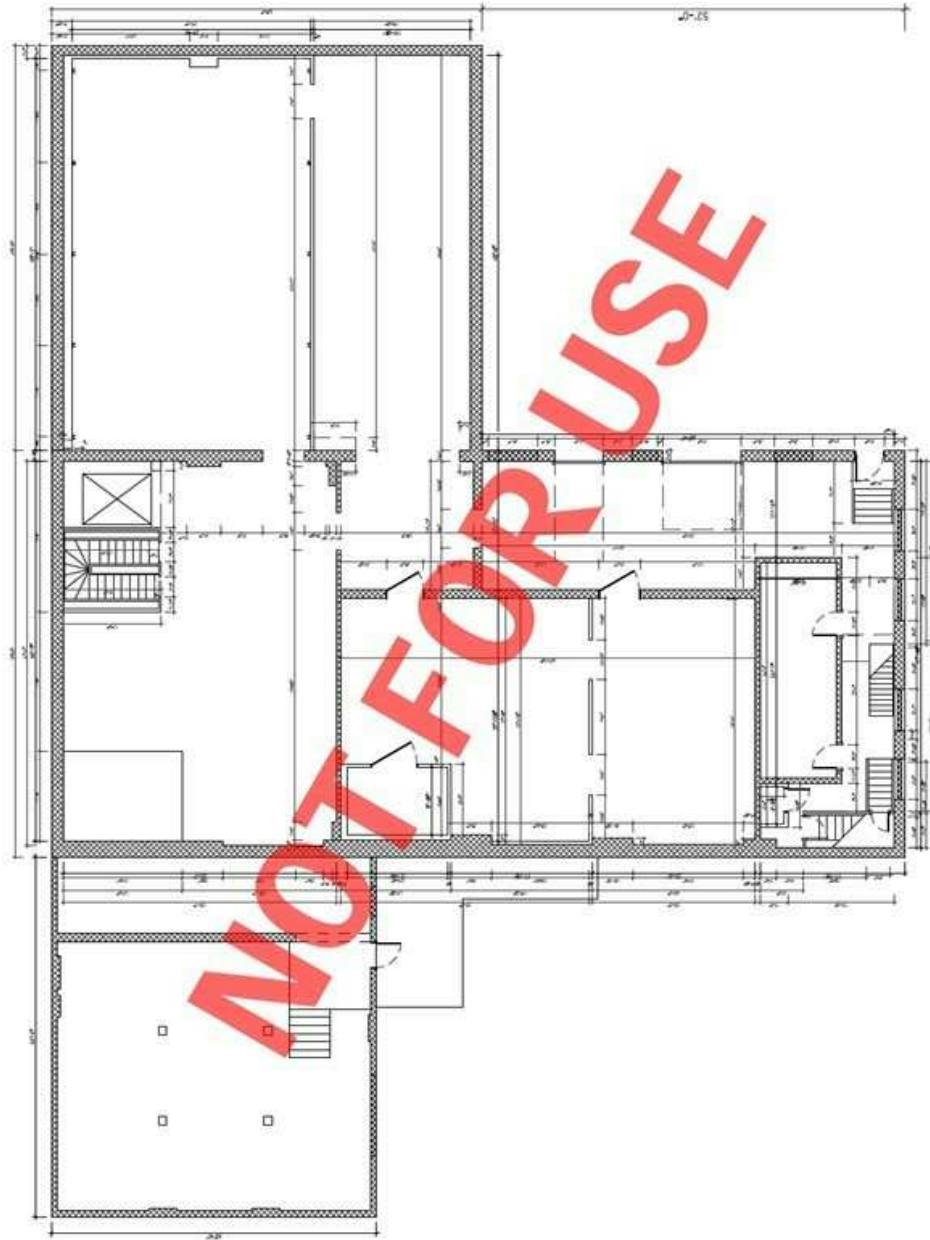
1561 ADELAIDE

1561 ADELAIDE ST., DETROIT, MI 48207



1561 ADELAIDE

1561 ADELAIDE ST., DETROIT, MI 48207



1561 ADELAIDE

1561 ADELAIDE ST., DETROIT, MI 48207

