



3,022 SF - 44,183 SF
TROPHY OFFICE SPACE AVAILABLE



Lincoln

99MSTREET.COM





ROOF TERRACE

A **PREMIER PROPERTY** offering a world-class customer experience and a commitment to the industry's highest sustainability standards.

THE BUILDING

- 220,000 SF / 11 stories of trophy office space
- 11,000+ SF of prime retail space
- Typical floor plate: 22,143 RSF
- 8'11" finished ceiling height: 30' x 45' column bays
- Four levels of below-grade parking
- Parking ratio of 1/1,500 PSF
- EV charging stations
- Green roof

THE AMENITIES

- Circa, Wells Fargo & El Bebe restaurants on the ground floor
- 4,750 SF rooftop terrace equipped with event lobby, restrooms and collaborative meeting spaces
- 4,300 SF club-like fitness facility
- Locker rooms and towel service
- Secured bike storage
- Close proximity to five parks and the Riverwalk Trail

THE ACCESS

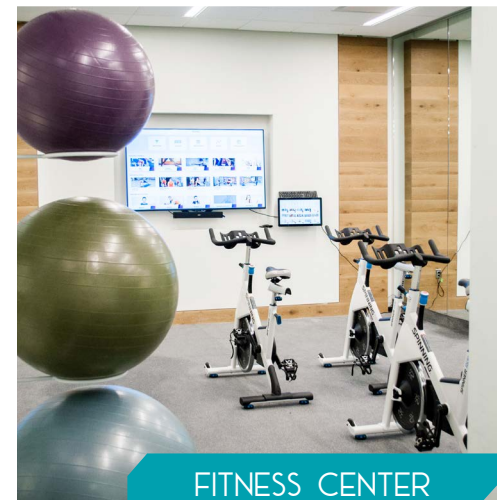
- Immediate access to the Navy Yard & Ballpark
- Metro station
- Five blocks from Capitol Hill
- Easy access to I-395 and I-295
- Two miles from National Reagan Airport
- One block from Washington Nationals Stadium
- Dozens of walkable restaurants and retail outlets



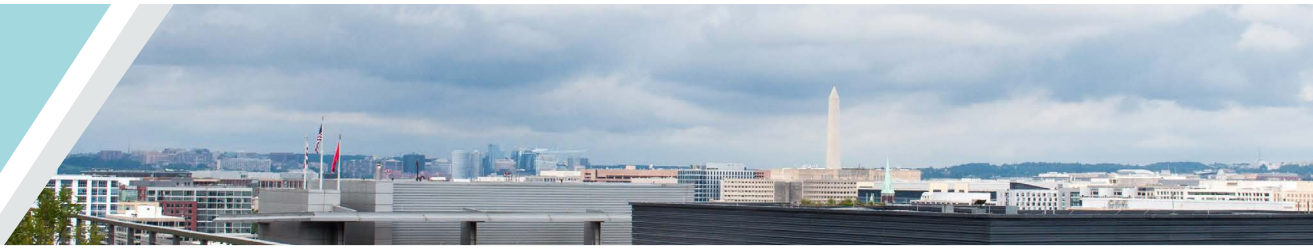
1ST STREET RETAIL



LOBBY

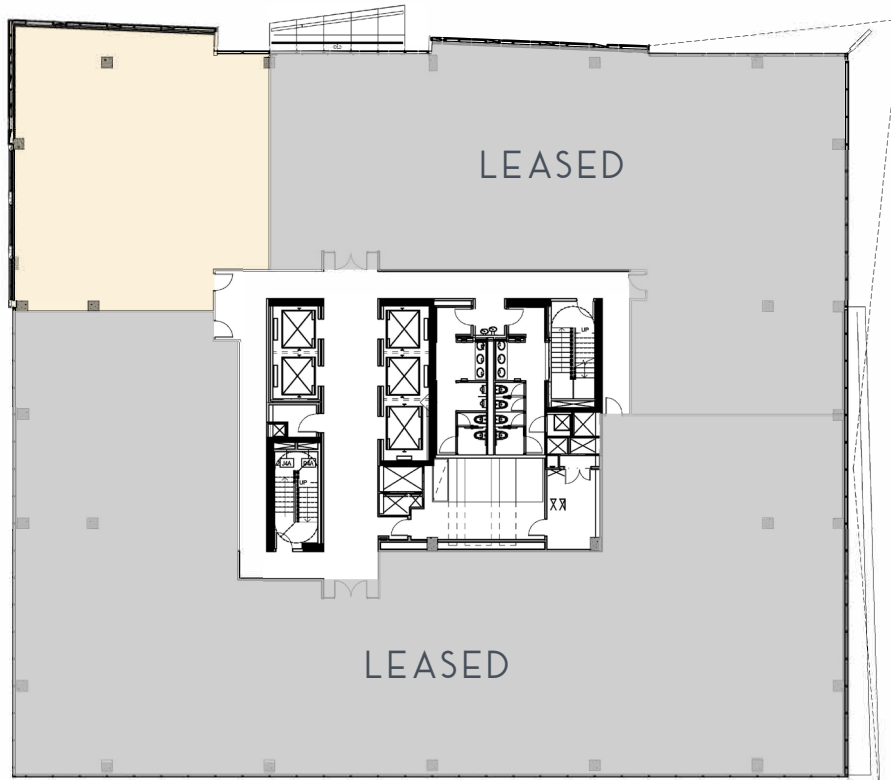


FITNESS CENTER

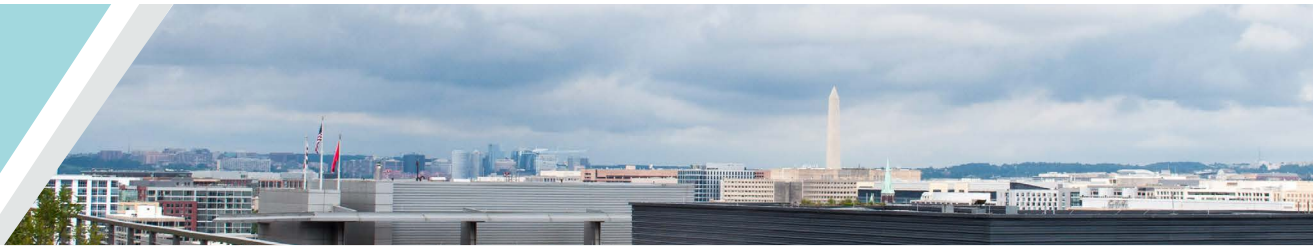


M STREET

SUITE 225 - 3,022 SF
AVAILABLE OCT. 2025



1ST STREET



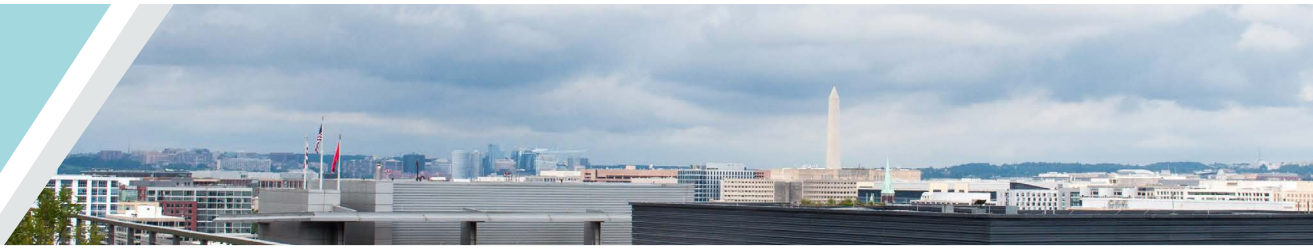
M STREET

SUITE 425
3,549 SF



1ST STREET

4TH FLOOR NEWLY DELIVERED HIGH END SPEC SUITE
VIEW MATTERPORT



M STREET

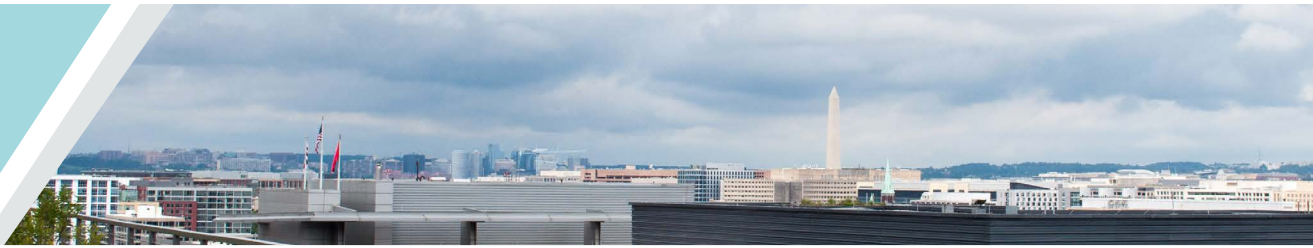
1ST STREET

- Private desks (6)
- Private phone booths (7)
- Conference rooms (7)
- Communal seating
- Shared kitchen & pantry
- Reception & mail room
- Print & scan station
- Restrooms

- SMALL OFFICE
1-3 DESKS
- MEDIUM OFFICE
4-6 DESKS
- LARGE OFFICE
7-10 DESKS
- PRIVATE DESKS
6 DESKS



8TH FLOOR - 22,091 SF
VIEW MATTERPORT



M STREET



1ST STREET

9TH FLOOR - 22,092 SF

