
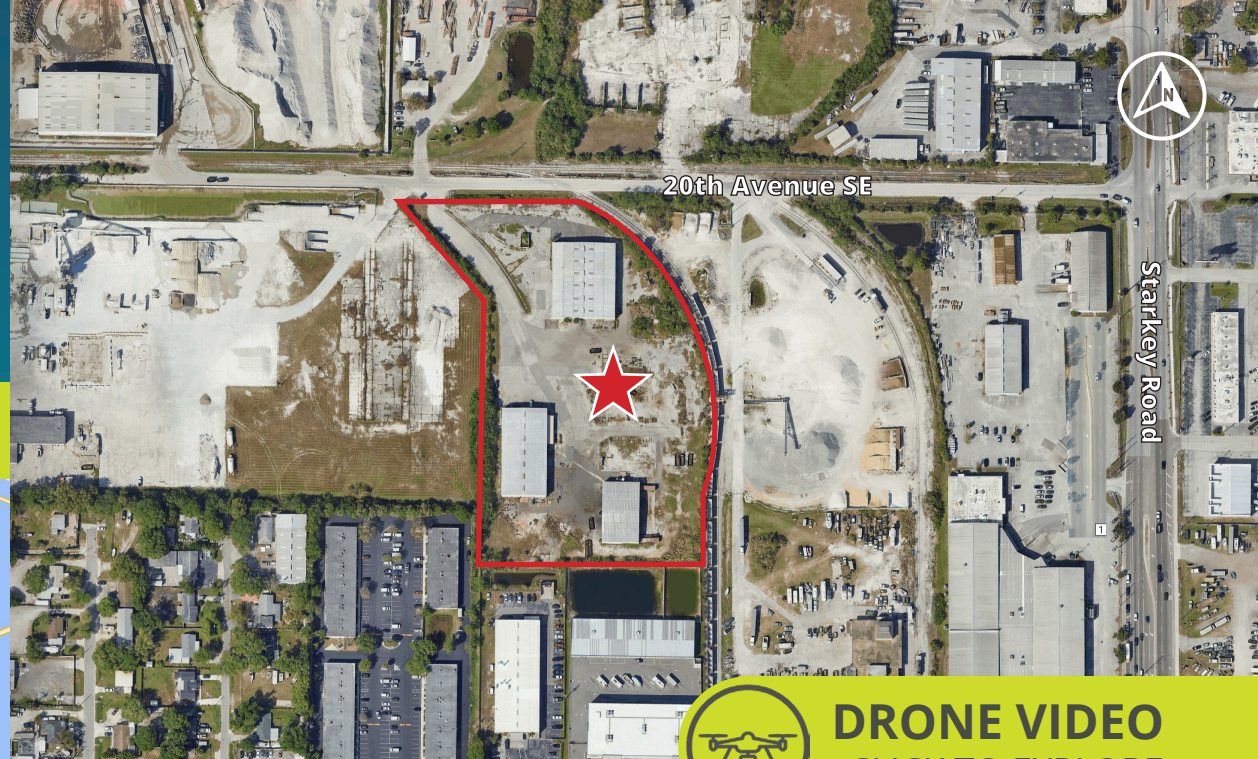
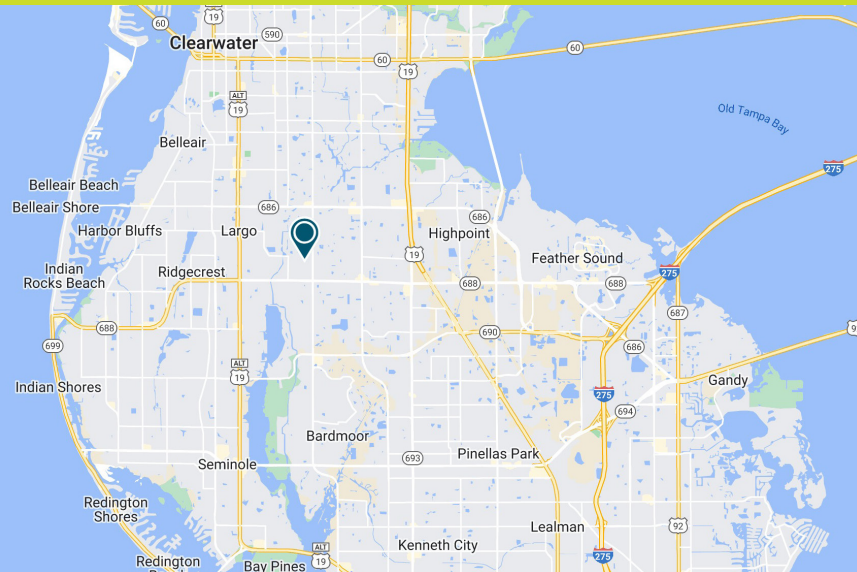


# 2062 20<sup>TH</sup> AVENUE

 2062 20th Ave SE  
Largo, FL 33771

## Warehouse For Lease



**DRONE VIDEO**  
CLICK TO EXPLORE

## PROPERTY HIGHLIGHTS

- **OUTDOOR STORAGE, HEAVY POWER & RAIL SERVED**
- **15,00 - 44,936 SF on +/-7.1 Acres**
- Multiple oversize drive-in doors, covered storage area and heavy power on site (multiple 2000amp 480volt 3 phase service on site)
- Clear Heights range from 16'-22' throughout the buildings
- Located in a well-established industrial submarket (Mid-Pinellas)
- I-G Heavy Industrial Zoning designation affords the widest variety of land uses, highest intensities and outside storage
- Excellent access to nearby and regional locations, including Ulmerton Road, Starkey Road, Gulf Beaches, Howard Franklin Bridge Courtney Campbell Causeway, Gandy Bridge, Downtown Clearwater, and Downtown St. Petersburg
- 9 miles to St. Pete-Clearwater International Airport

**BRAD HUTTON** | Director  
813.793.8492 | Brad.Hutton@FranklinSt.com

**DAVID HOVIS** | Associate  
813.345.5895 | David.Hovis@FranklinSt.com

**PATRICK KELLY** | Regional Managing Director  
813.682.6210 | Pat.Kelly@FranklinSt.com



LICENSED REAL ESTATE BROKER | FranklinSt.com



SITE PLAN RENDERING:  
15,000 - 44,936 SF on +/-7.1 AC



PROPERTY SURVEY

Building #	Square Footage
1	19,283
2	16,524
4	9,124
<b>Total</b>	<b>44,936</b>

