

# 225 PROMENADE PARKWAY

Fayetteville, GA 30214



**FOR SALE**

**11,000 SF**

**5,000 SF**  
MEZZANINE SPACE

## PROPERTY HIGHLIGHTS

- Delivered vacant
- 22'-26' clear throughout the building
- Fully fenced, gated, and secure
- 6'-8' slabs throughout the building
- Six (6) Oversized Drive-In Doors
- 3-Phase 480 volt power
- 2,500 SF office, climate controlled
- One (1) Dock-High Door
- LED Lighting







**NAI**BrannenGoddard

225 PROMENADE PARKWAY



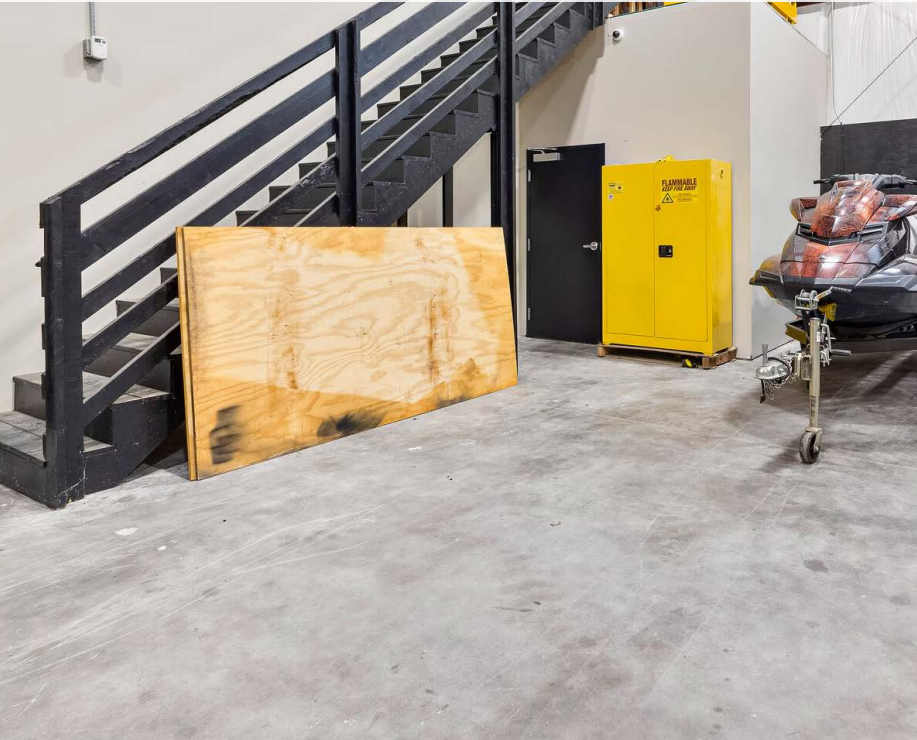
**Griffin Price** 404 812 4094 | [gprice@naibg.com](mailto:gprice@naibg.com)  
**Garrison Price** 404 812 4039 | [gprice@naibg.com](mailto:gprice@naibg.com)  
**Matt Bentley** 404 812 4079 | [mbentley@naibg.com](mailto:mbentley@naibg.com)

**KING Building**, 6 Concourse Parkway, Suite 1900, Atlanta, GA 30328, 404 812 4000, [NAIBG.COM](http://NAIBG.COM)  
©NAI Brannen Goddard. Information is deemed from reliable sources. No warranty is made as to its accuracy.



**NAI**BrannenGoddard

225 PROMENADE PARKWAY

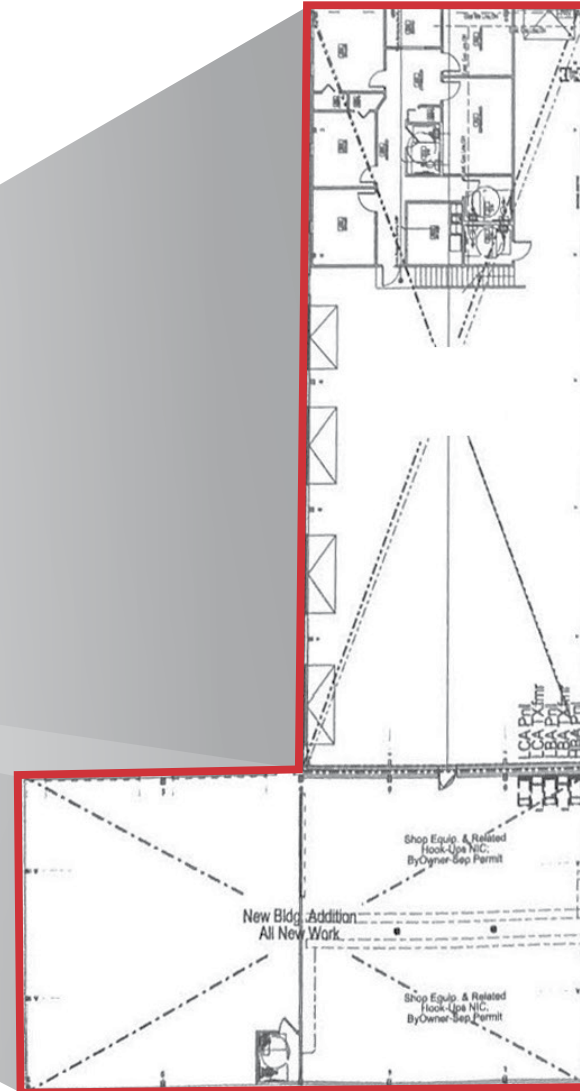
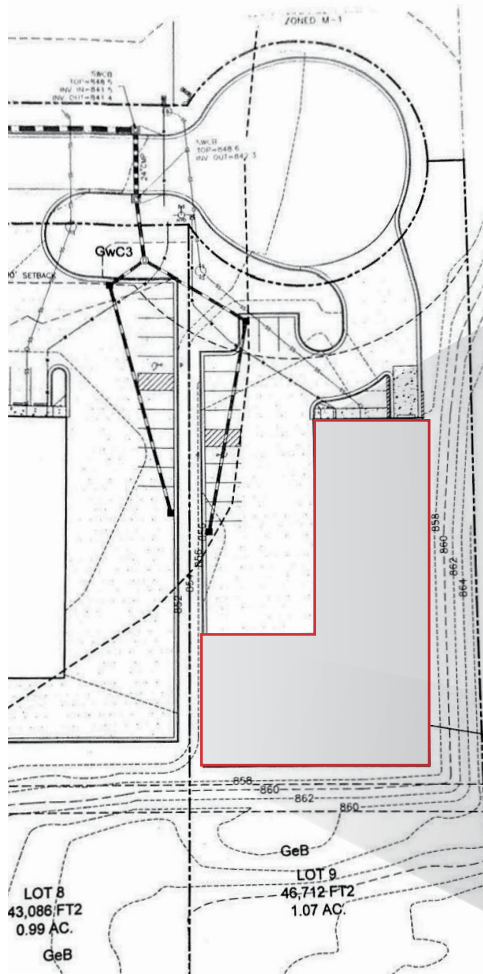


**Griffin Price** 404 812 4094 | [gprice@naibg.com](mailto:gprice@naibg.com)  
**Garrison Price** 404 812 4039 | [gprice@naibg.com](mailto:gprice@naibg.com)  
**Matt Bentley** 404 812 4079 | [mbentley@naibg.com](mailto:mbentley@naibg.com)

**KING Building, 6 Concourse Parkway, Suite 1900, Atlanta, GA 30328, 404 812 4000, NAIBG.COM**  
©NAI Brannen Goddard. Information is deemed from reliable sources. No warranty is made as to its accuracy.



# 225 PROMENADE PARKWAY





## 225 PROMENADE PARKWAY

