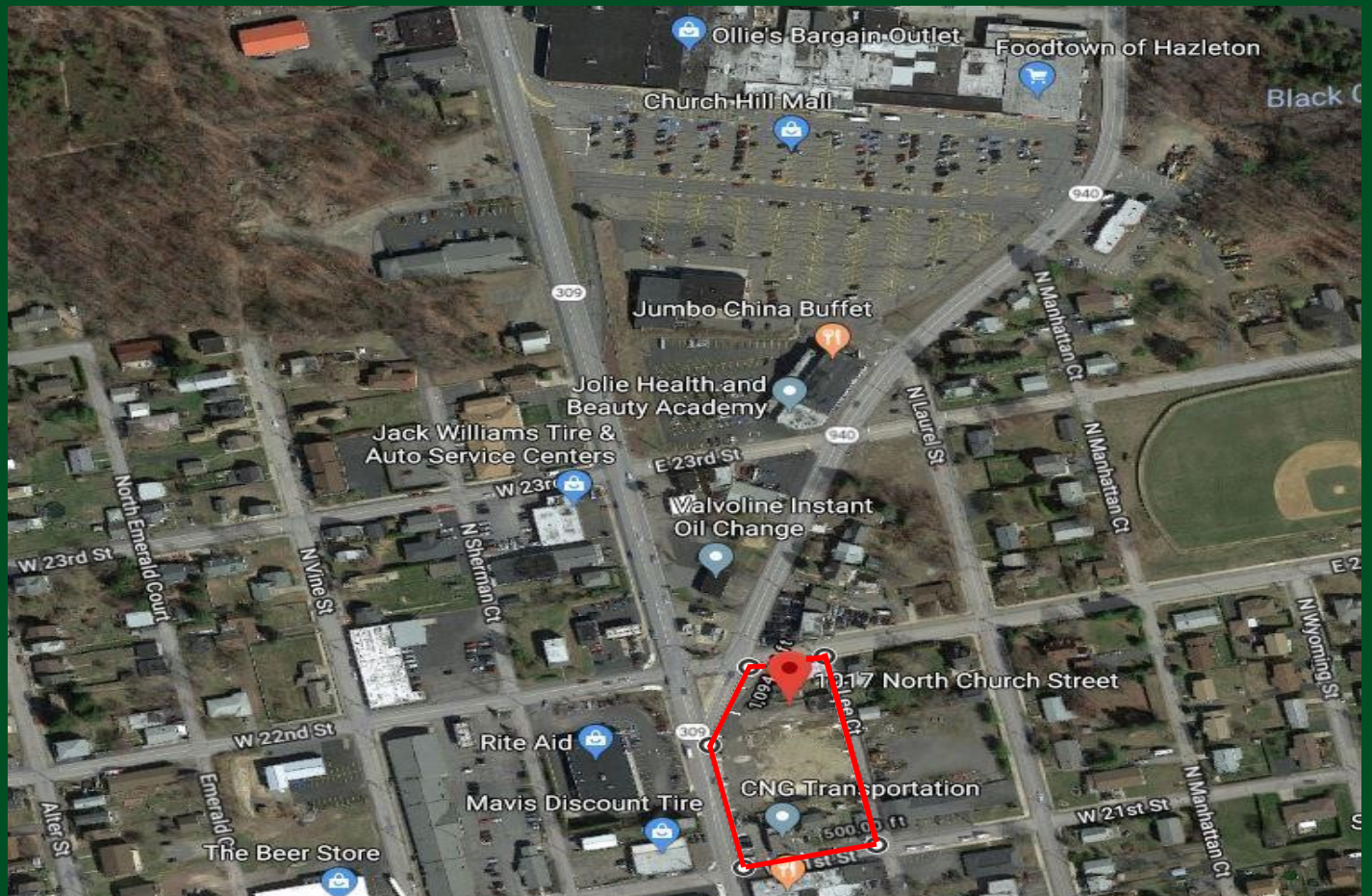




# HANNA

## FREDERICK COMMERCIAL

**1017 -1019 N Church Street, Luzerne County PA, 18202**



**Great location** - 5 point lighted intersection and a high traffic count. National business neighbors. Route 309 is a State Highway.

**MLS#: 708941**

**Asking: \$700,000**

**Commercial Land**

**For More Information Contact:**

**Bob Nemeth**

**570-578-4358**

**RobertNemethSr@HowardHanna.com**

**-or-**

**Joanne Scalleat**

**570-956-8655**

**graceme3@aol.com**

NO WARRANTY OR REPRESENTATION, express or implied, is made as to the accuracy of the information contained herein, and same is submitted subject to errors, omissions, change of price, rental or other conditions, withdrawal without notice, and to any special listing conditions, imposed by our principals.