

APEX BUSINESS CENTER

4141/4201/4225 38TH ST. S., FARGO, ND 58104



Contact
Agent for
Incentives!

FOR LEASE



GREAT SOUTH FARGO OFFICE & WAREHOUSE FOR LEASE

Space Available: 810 - 13,453 SF

Base Rent: \$10.00 - \$13.50 PSF

CAM: \$2.05 PSF

Tenant Expenses: Utilities, Janitorial, Phone/Internet

Paul Campbell | 701.893.2826

paul.campbell@goldmark.com

Goldmark Commercial Real Estate

www.goldmarkcommercial.com

APEX BUSINESS CENTER

4141/4201/4225 38TH ST. S., FARGO, ND 58104

GOLDMARKTM
COMMERCIAL REAL ESTATE INC

SPACE AVAILABLE

810 - 13,453 SF

BASE RENT

\$12.00 - 13.50 PSF = Office

\$9.50 -10.00 PSF = Warehouse

CAM

\$2.05 PSF

TENANT EXPENSES

Utilities
Phone/Internet
Janitorial

PROPERTY DESCRIPTION:

Fantastic office and warehouse spaces are available at the Apex Business Center! At great rental rates, these office and warehouse spaces are unique to the South Fargo area. Conveniently located near the corner of I-29 and 40th Avenue S, Apex Business Center boasts front door parking, visible monument signage from I-29, and other amenities. Call today to move into your new business headquarters!

OFFICE SPACE AVAILABLE:

4141 - 2A 1,500 SF
4141 - 2D 810 SF
4141 - E 2,712 SF

4151 - A 1,337 SF

4201 - 201 3,301 SF

4201 - 204 1,085 SF

4225 - 107 1,322 SF

4225 -109 2,980 SF

4225 -110 1,218 SF

4225 -202 13,453 SF

WAREHOUSE AVAILABLE:

4201 - H 1,800 SF

WAREHOUSE w/ OFFICE:

4141 - 1A 5,000 SF
(3,500 SF warehouse/1,500 SF office)

This information has been secured from sources we believe to be reliable, but we make no representation or warranties, expressed or implied, as to the accuracy of the information. Interested parties should conduct their own independent investigations and rely only on those results.



APEX BUSINESS CENTER

4141/4201/4225 38TH ST. S., FARGO, ND 58104

GOLDMARK[™]
COMMERCIAL REAL ESTATE INC

SITE PLAN



APEX BUSINESSES:

- Dietrich Homes
- Ironclad Marketing
- ReNew Medical Clinic
- Sammons Financial
- BioGirls
- Farmers Union Insurance
- Coaches Choice

AREA BUSINESSES:

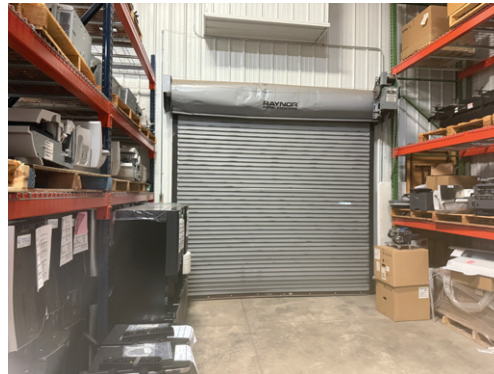
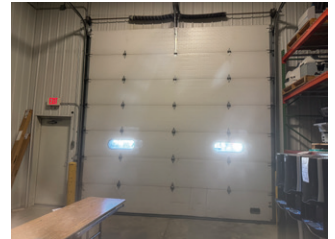
- Microsoft
- Aldevron
- Titan Machinery
- PAM Rehab
- Vaaler Insurance
- Balance Accounting
- Shotwell Floral
- Aldi
- Essentia Health

APEX BUSINESS CENTER

4141/4201/4225 38TH ST. S., FARGO, ND 58104



- 5,000 SF Total
- 3,500 SF Warehouse - \$9.50 PSF
- 1,500 SF Office - \$13.50 PSF
- Overhead Door
- Mezzanine

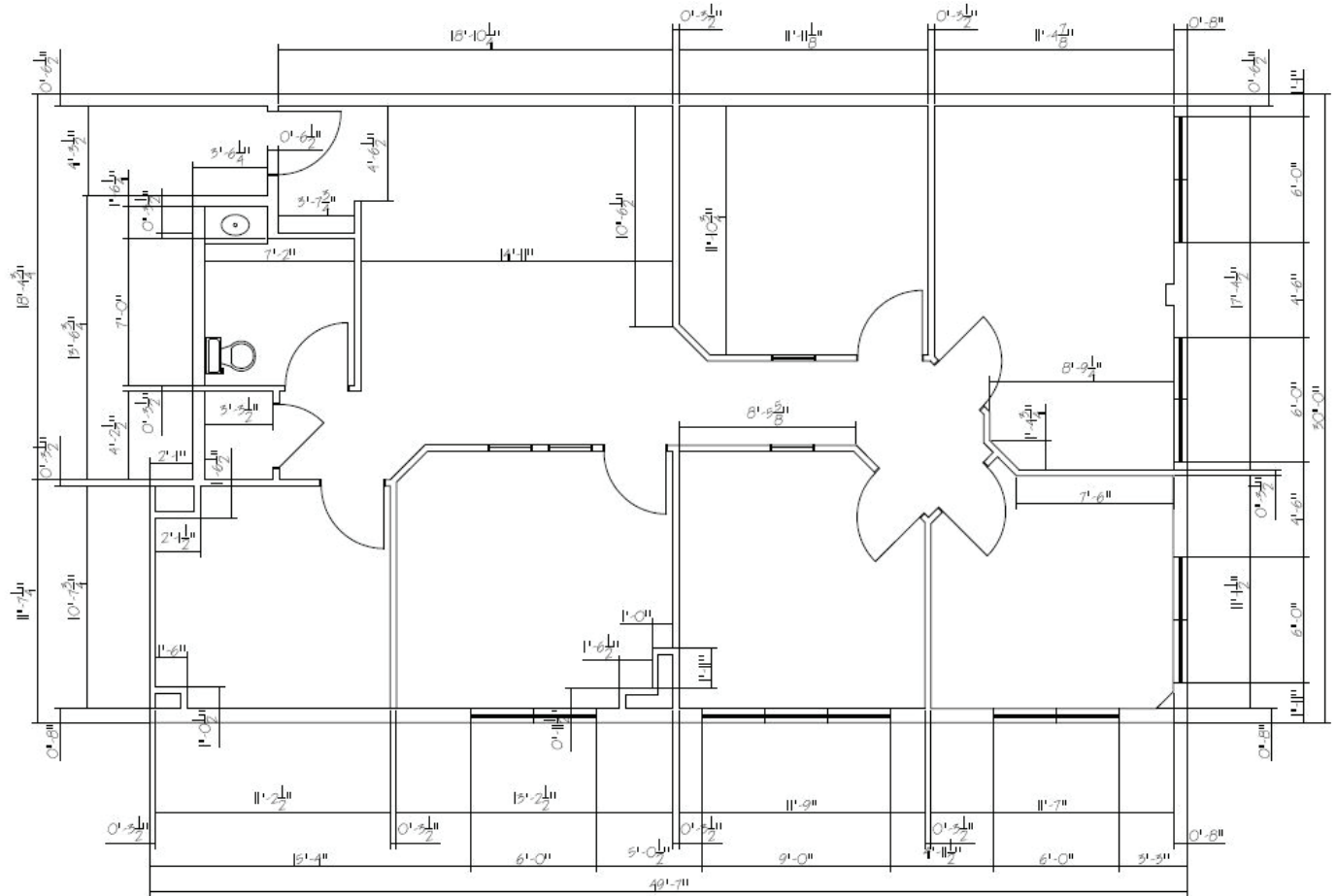


APEX BUSINESS CENTER

4141/4201/4225 38TH ST. S., FARGO, ND 58104

GOLDMARK™
COMMERCIAL REAL ESTATE INC

4141 - 2A



- 1,500 SF
- 5 offices
- Lounge area
- Private restroom
- Lots of natural light
- Large reception area

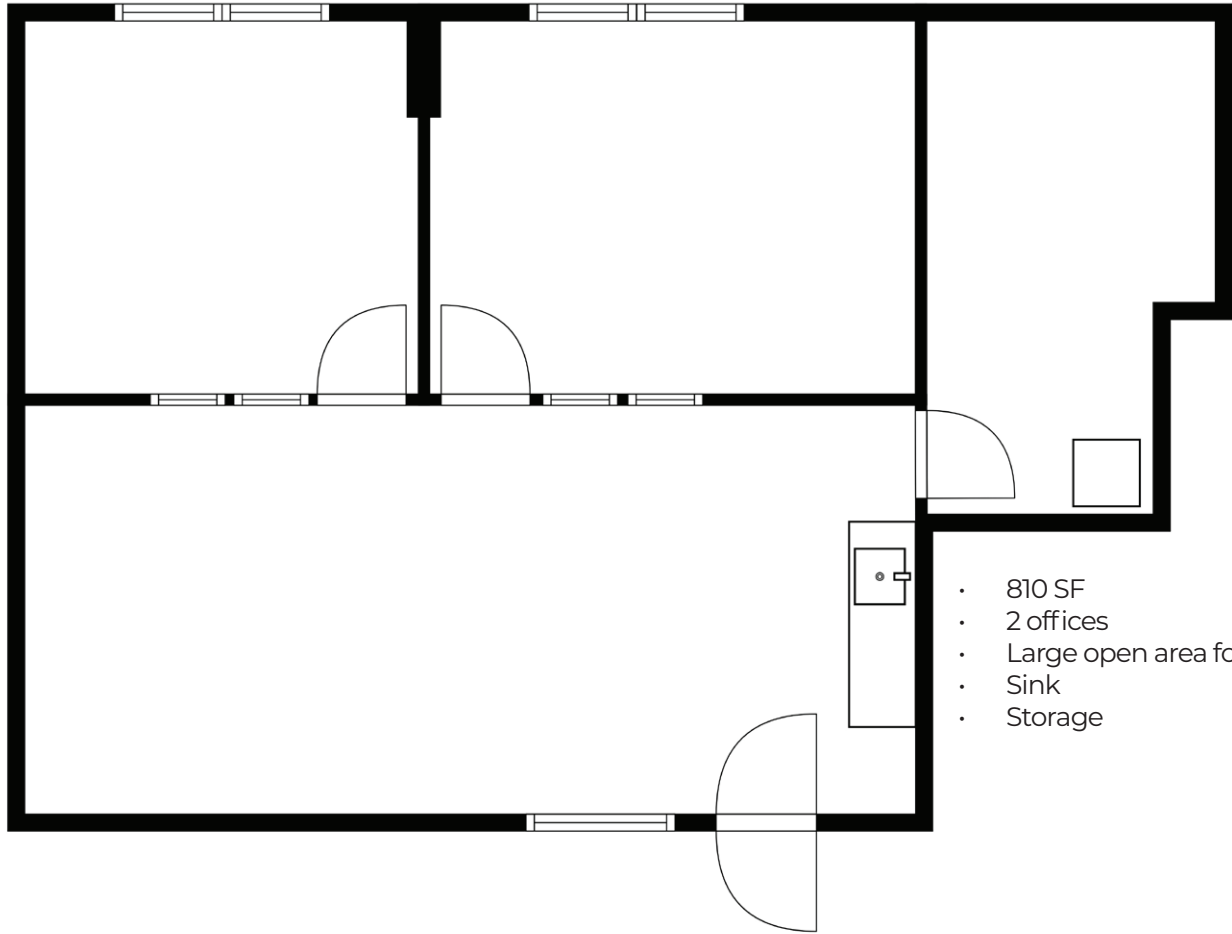


APEX BUSINESS CENTER

4141/4201/4225 38TH ST. S., FARGO, ND 58104

GOLDMARK[™]
COMMERCIAL REAL ESTATE INC

4141 - 2D



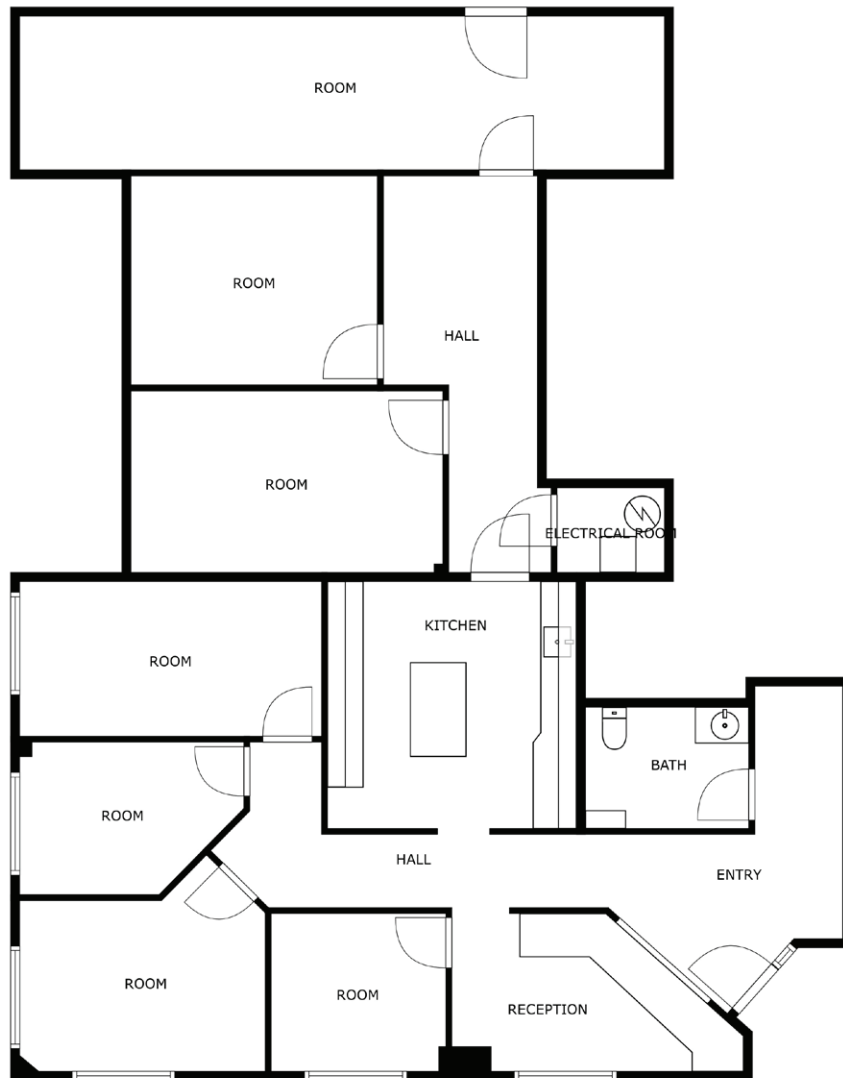
- 810 SF
- 2 offices
- Large open area for reception
- Sink
- Storage



APEX BUSINESS CENTER

4141/4201/4225 38TH ST. S., FARGO, ND 58104

GOLDMARK™
COMMERCIAL REAL ESTATE INC



- 2,712 SF
- 1st floor with front door parking
- 5 offices
- Conference room
- Private restroom
- Production and lounge area

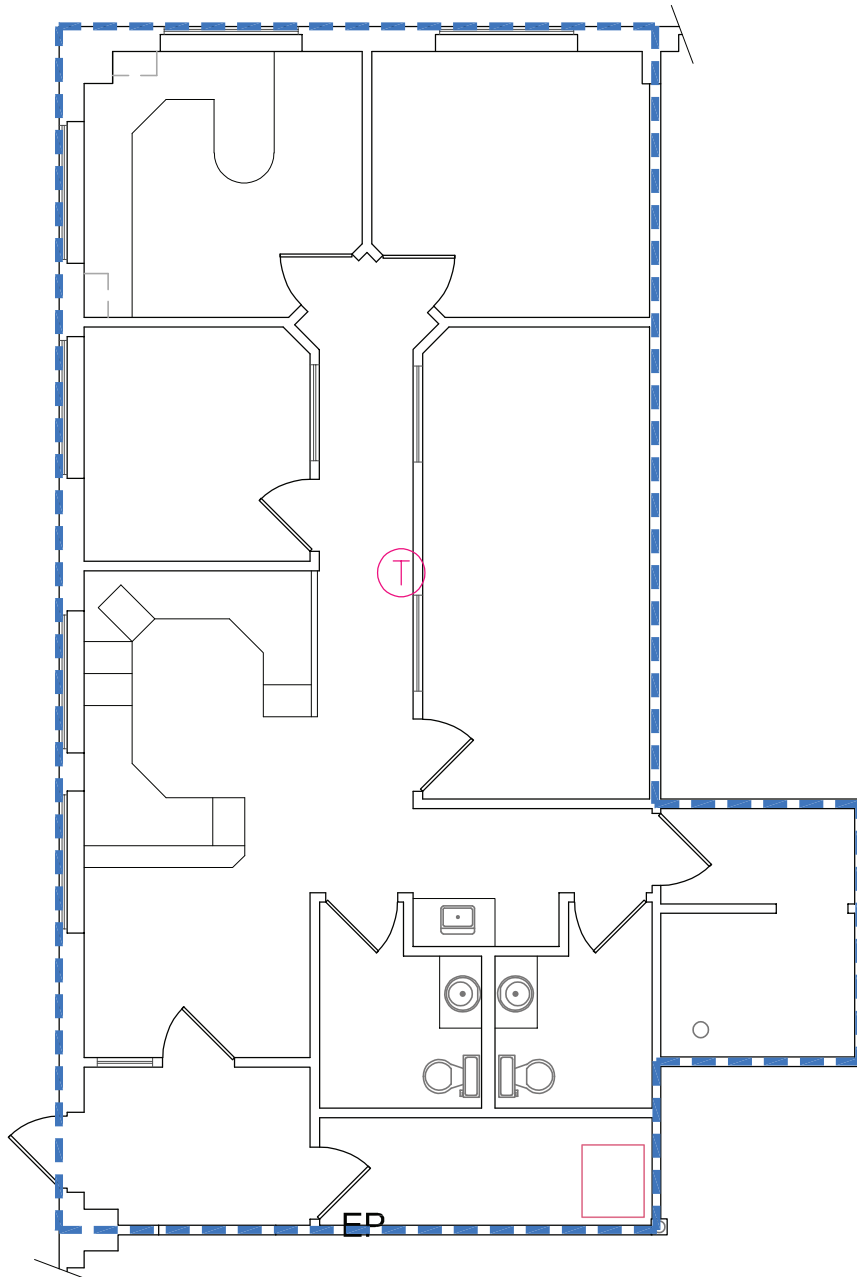


APEX BUSINESS CENTER

4141/4201/4225 38TH ST. S., FARGO, ND 58104

GOLDMARKTM
COMMERCIAL REAL ESTATE INC

4151 - A



- 1,337 SF
- Restrooms
- 4 offices
- Open work area



APEX BUSINESS CENTER

4141/4201/4225 38TH ST. S., FARGO, ND 58104

GOLDMARK™
COMMERCIAL REAL ESTATE INC



- 2,585 SF
- 1st floor with front door parking
- Nice foyer area
- Large open area with large windows
- 6 rooms for offices or storage
- Private restroom
- Sink and lounge area

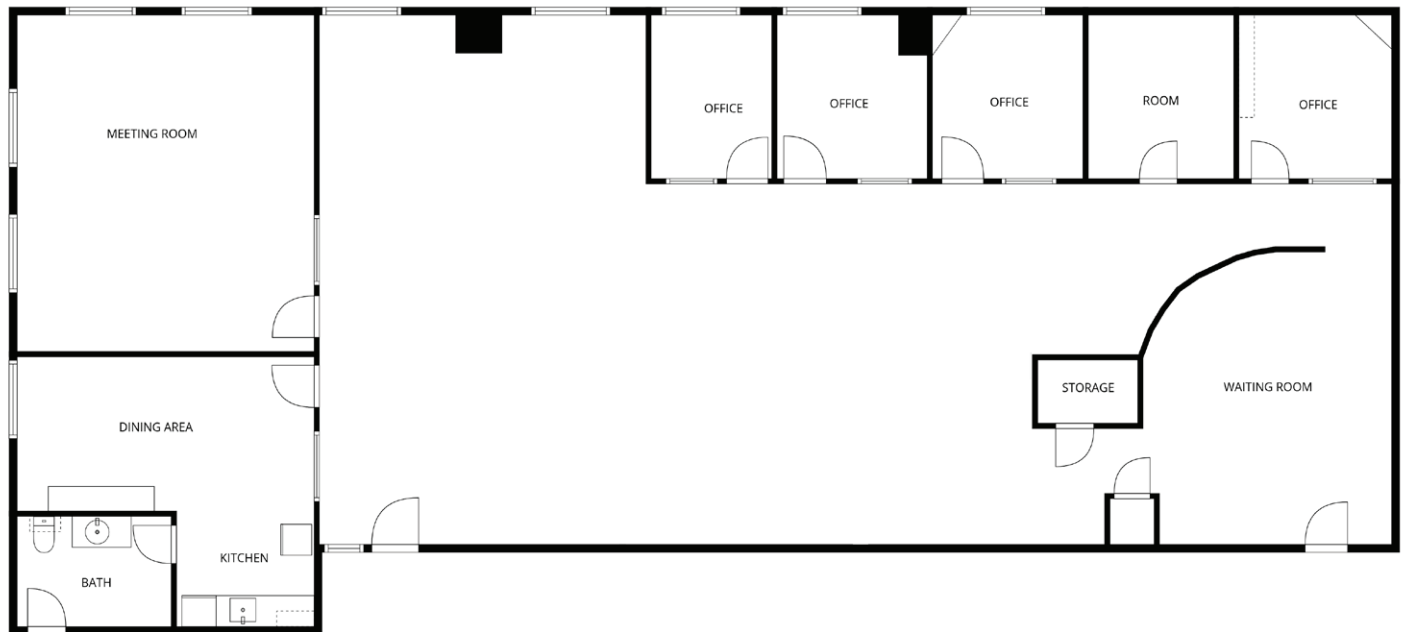


APEX BUSINESS CENTER

4141/4201/4225 38TH ST. S., FARGO, ND 58104

GOLDMARKTM
COMMERCIAL REAL ESTATE INC

4201 - 201



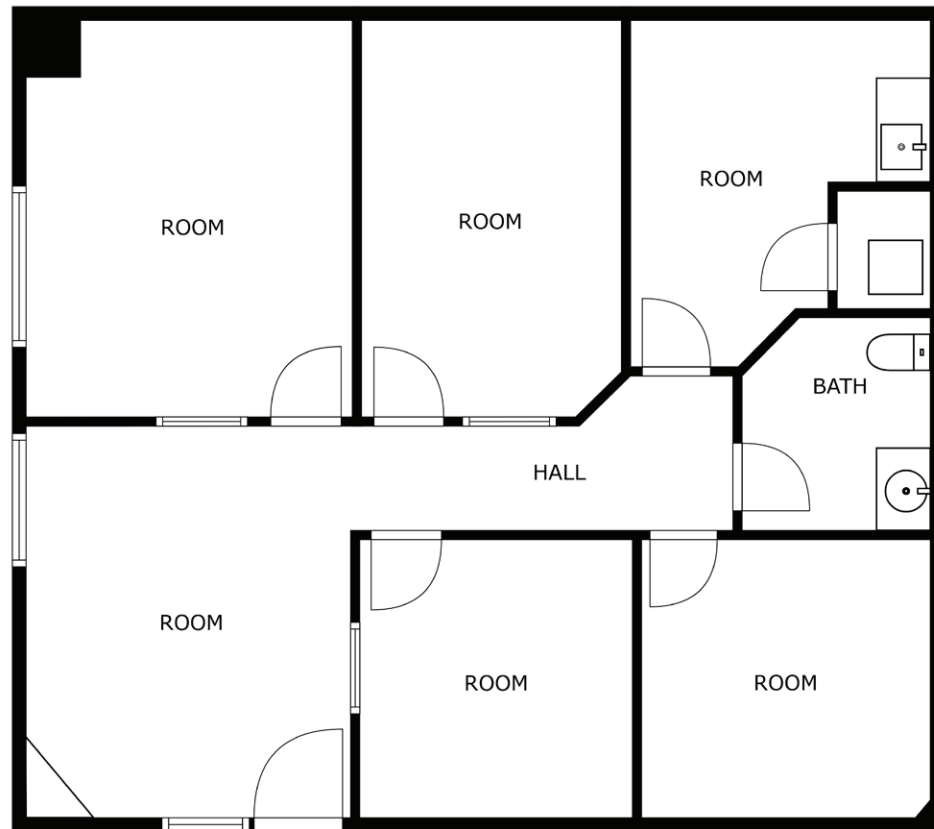
- 3,301 SF
- 5 offices
- Large open area for work stations
- Reception area
- Large conference room
- Lounge and kitchenette
- Private restroom
- Lots of natural light

APEX BUSINESS CENTER

4141/4201/4225 38TH ST. S., FARGO, ND 58104

GOLDMARK[™]
COMMERCIAL REAL ESTATE INC

4201 - 204

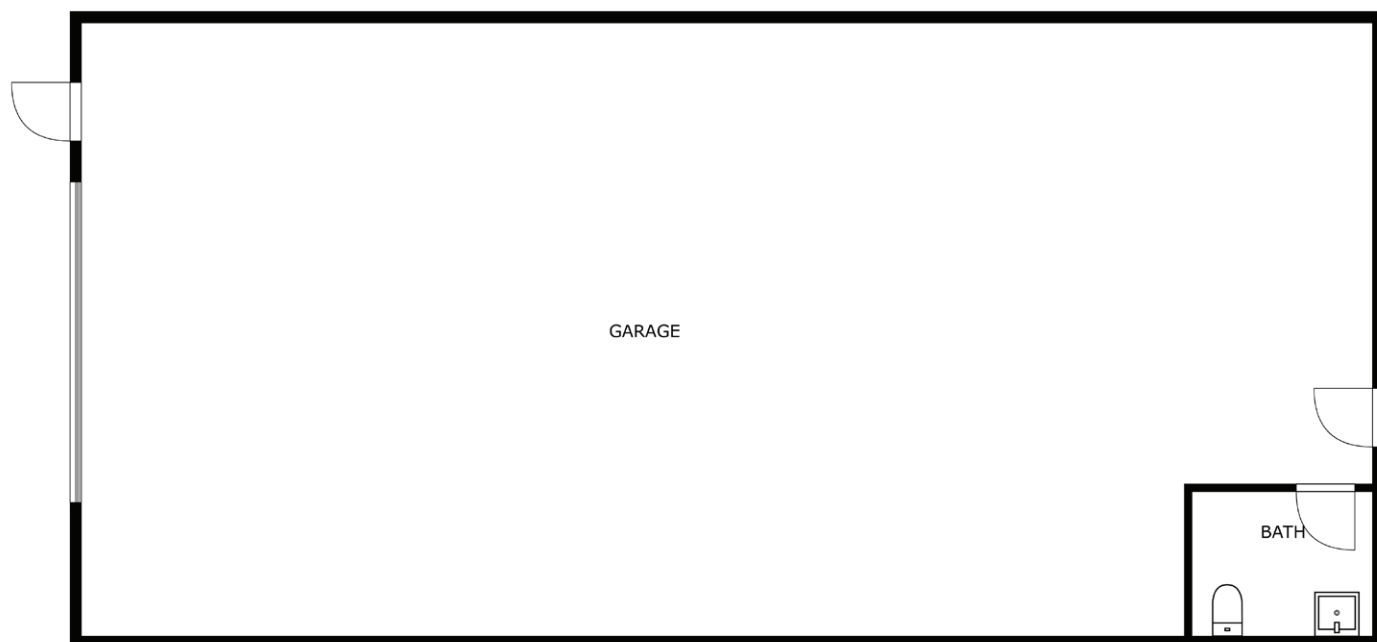


- 1,085 SF
- Reception area
- 4 offices
- Lounge with sink
- Private restroom

APEX BUSINESS CENTER

4141/4201/4225 38TH ST. S., FARGO, ND 58104

GOLDMARK™
COMMERCIAL REAL ESTATE INC



- 1,800 SF
- \$10.00 PSF
- Open warehouse
- Private restroom

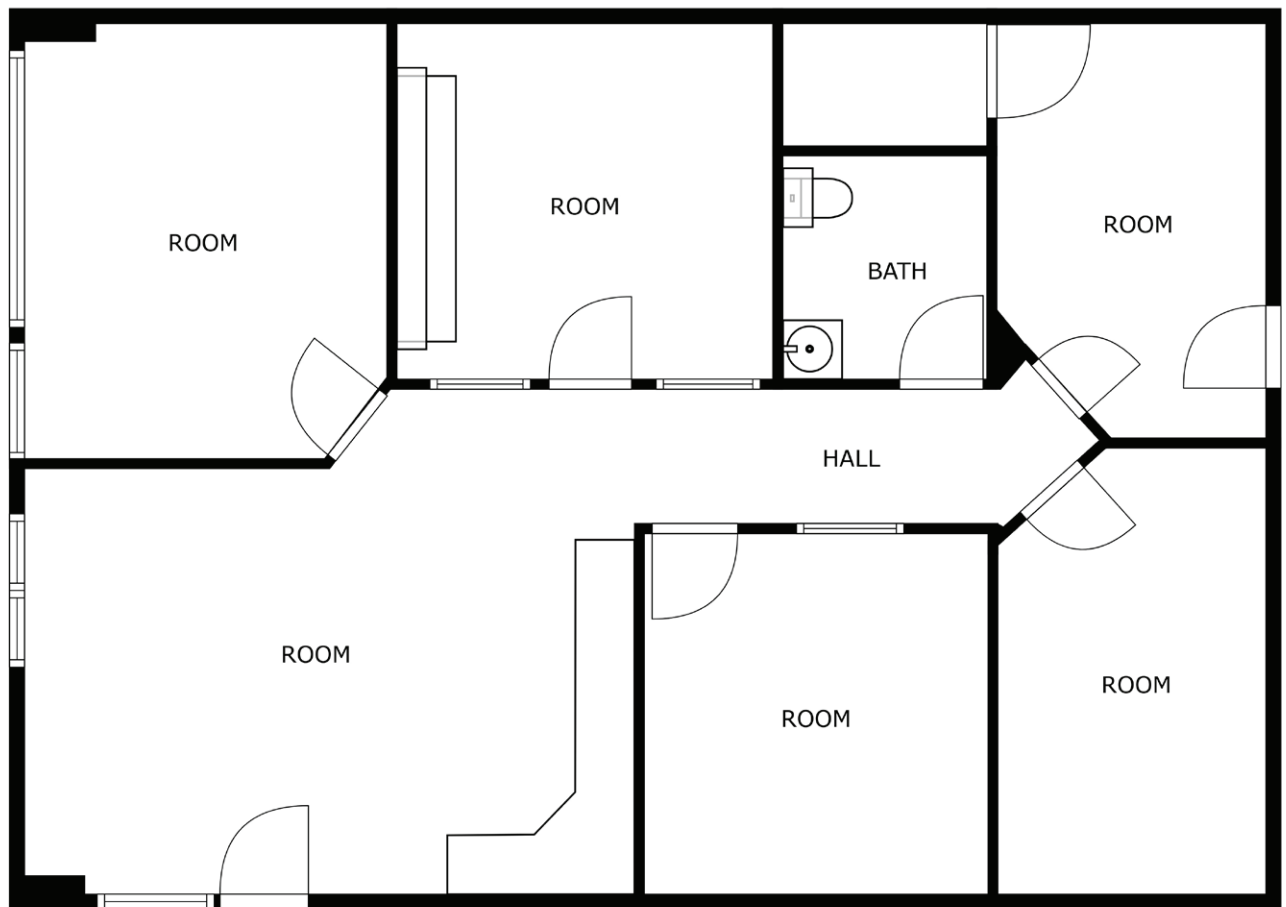


APEX BUSINESS CENTER

4141/4201/4225 38TH ST. S., FARGO, ND 58104

GOLDMARKTM
COMMERCIAL REAL ESTATE INC

4225 - 107



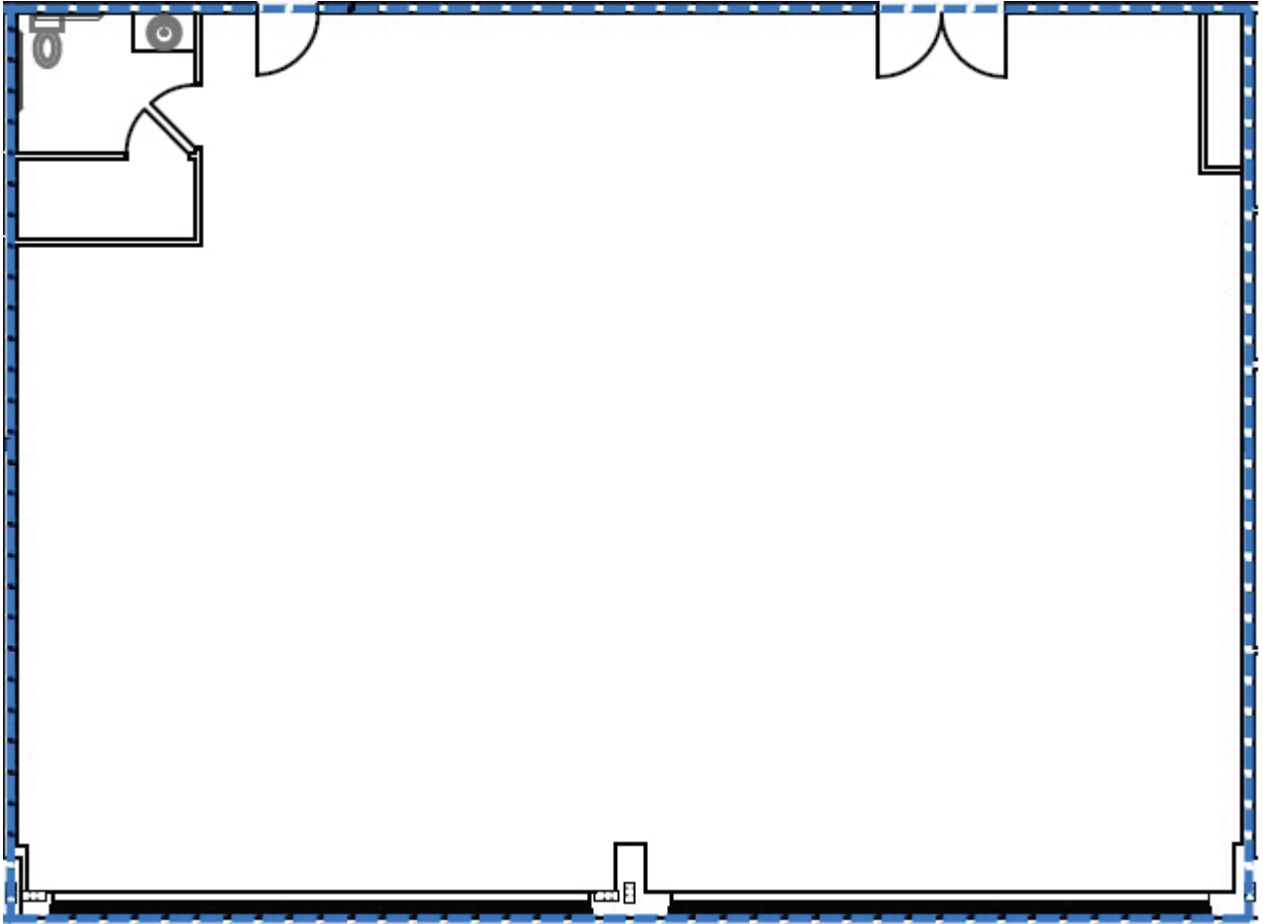
- 1,322 SF
- Reception area
- 5 offices/storage
- Private restroom
- Washer/dryer hook-ups



APEX BUSINESS CENTER

4141/4201/4225 38TH ST. S., FARGO, ND 58104

GOLDMARKTM
COMMERCIAL REAL ESTATE INC



- 2,980 SF
- \$13.50 PSF

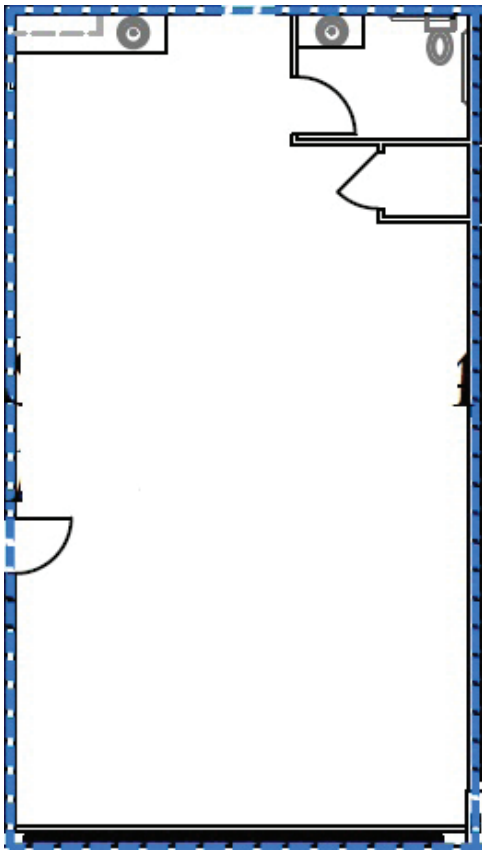


APEX BUSINESS CENTER

4141/4201/4225 38TH ST. S., FARGO, ND 58104

GOLDMARK[™]
COMMERCIAL REAL ESTATE INC

4225 - 110



- 1,218 SF
- \$13.50 PSF
- Reception area
- 3 offices
- Private restroom



APEX BUSINESS CENTER

4141/4201/4225 38TH ST. S., FARGO, ND 58104

