

FOR SALE

Village Drive
Fayetteville, NC 28304



1.5 +/- AC COMMERCIAL LOT ON VILLAGE DRIVE

Offering Summary

- Sale Price: \$695,000
- Size: 1.5 +/- Acres
- Zoned: OI— Office & Institutional
- Frontage: 160 +/- Feet on Village Dr.
300 +/- Feet on Marlborough Rd

Property Description

Great corner commercial lot located at the corner of Village Dr. & Marlborough Rd. Zoned Office & Institutional with 160 +/- road frontage on Village Dr. & 300 +/- road frontage on Marlborough Rd. Close proximity to Raeford Rd and Cape Fear Valley Hospital. 16,500 VPD (NCDOT 2022).



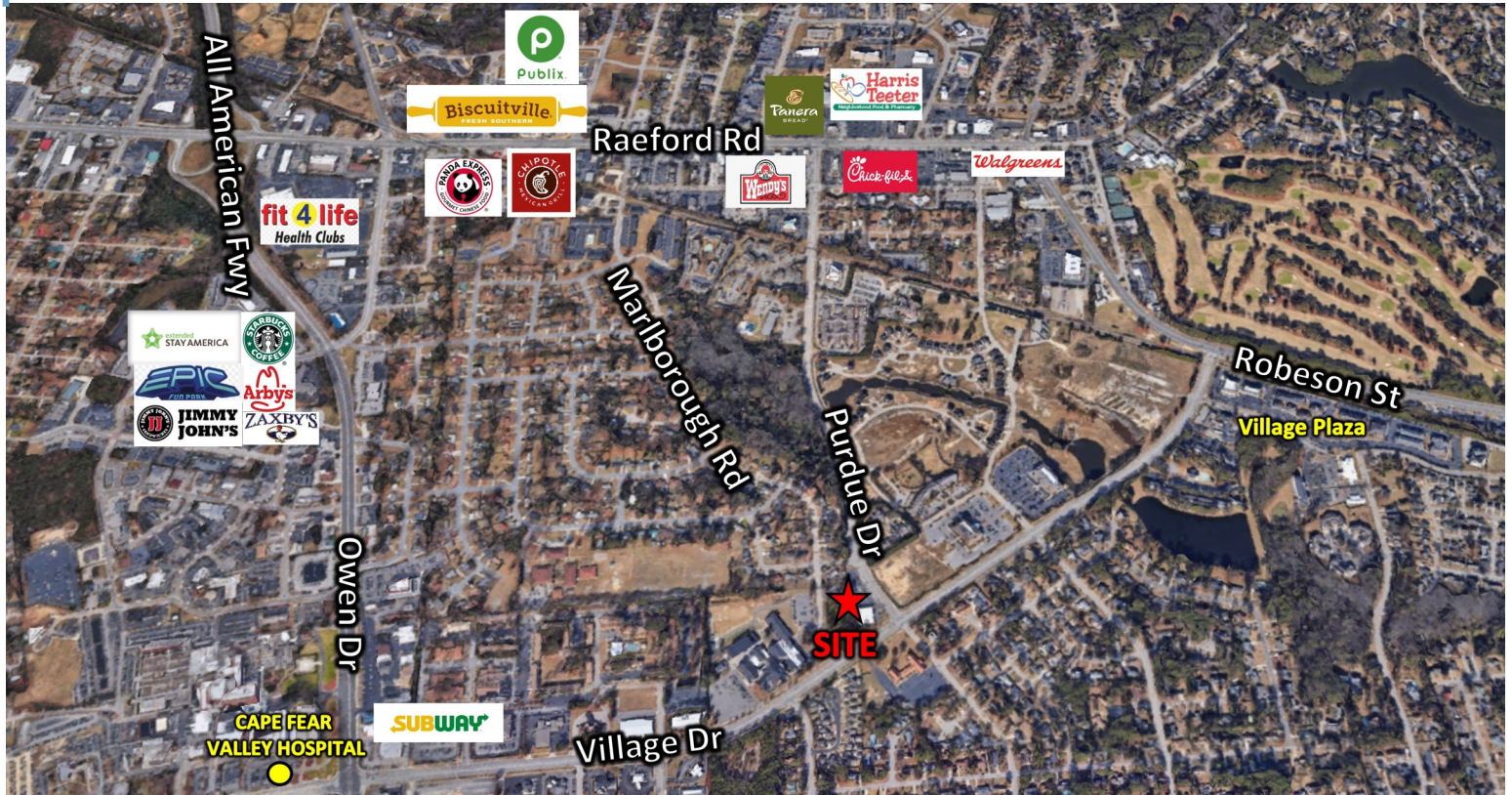
**Franklin Johnson &
Holly Pendergraft**

910.818.8400 | 919.610.1396

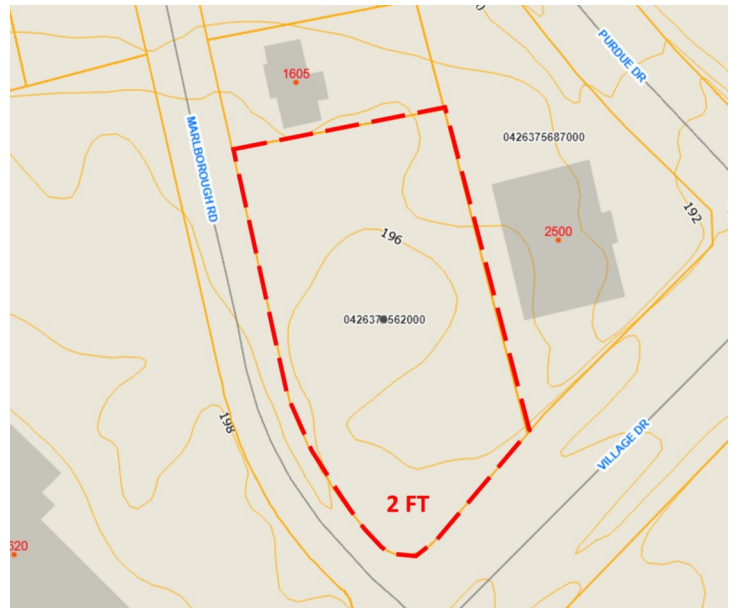
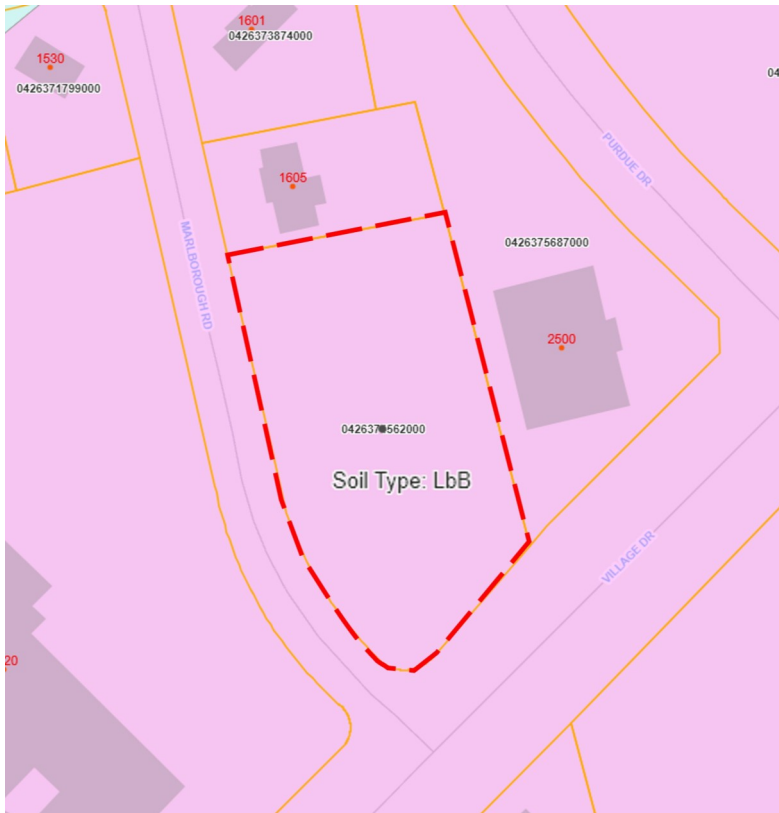
Franklin@Franklinjohnsoncommercial.com

FOR SALE

**Village Drive
Fayetteville, NC 28304**



1.5 +/- AC COMMERCIAL LOT ON VILLAGE DRIVE



**Franklin Johnson &
Holly Pendergraft**
910.818.8400 | 919.610.1396
Franklin@Franklinjohnsoncommercial.com