

# FOR LEASE

## KOLL SAVI BUSINESS CENTER

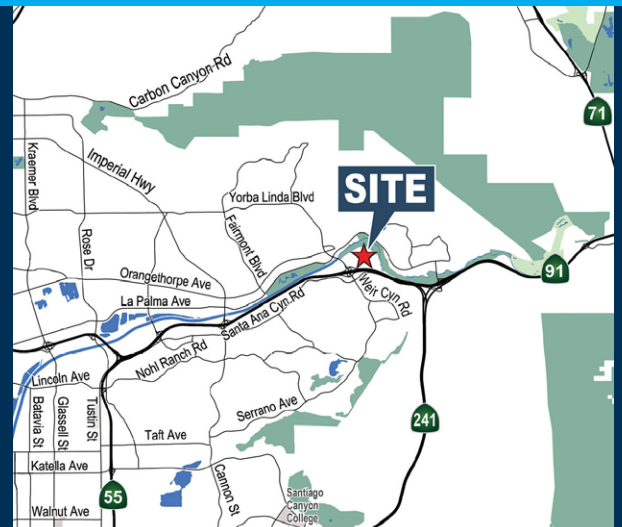


**22800 SAVI RANCH PARKWAY**

**YORBA LINDA, CALIFORNIA**

### PROPERTY FEATURES

- Corporate Image Office Property
- Suites Available From  $\pm 1,200$  to  $\pm 15,000$  SF
- Approximately 3 Acre Property Providing Ample No Cost Parking
- Elevator Served High Image Building
- Direct Access to the Riverside (91) Freeway at Weir Canyon Road & Immediate access to South Orange County (241)
- Adjacent to many amenities including retail services, restaurants and hotels



# Voit

REAL ESTATE SERVICES

**Barry Walshe**  
Vice President | Partner  
(714) 935-2309  
bwalshe@voitco.com  
Lic. #01991785

# FOR LEASE

## KOLL SAVI BUSINESS CENTER

22800 SAVI RANCH PARKWAY, YORBA LINDA, CA

**2-STORY HIGH IMAGE OFFICE BUILDING | ±48,794 TOTAL RENTABLE SQUARE FEET**  
**RECENT HIGH IMAGE LOBBY REMODEL**

FLOOR	SUITE	TOTAL SF	LEASE RATE PSF	COMMENTS
2	216	± 1,344 SF	\$2.49 FSG	4 offices, open area, corner location, extensive glass line
2	210	± 1,420 SF	\$2.49 FSG	3 offices, open area
1	110	2,933 SF	\$2.49 FSG	Glass entry off lobby, extensive glass line, offices, open area, reception area

\*Rental rates include utilities and interior janitorial services

***Voit***  
REAL ESTATE SERVICES

**Barry Walshe**  
Vice President | Partner  
(714) 935-2309  
bwalshe@voitco.com  
Lic. #01991785

2400 E. Katella Avenue, Suite 750 | Anaheim, California 92806 | (714) 978-7880 | (714) 978-9431 FAX | Lic #01991785 | [www.VoitCo.com](http://www.VoitCo.com)

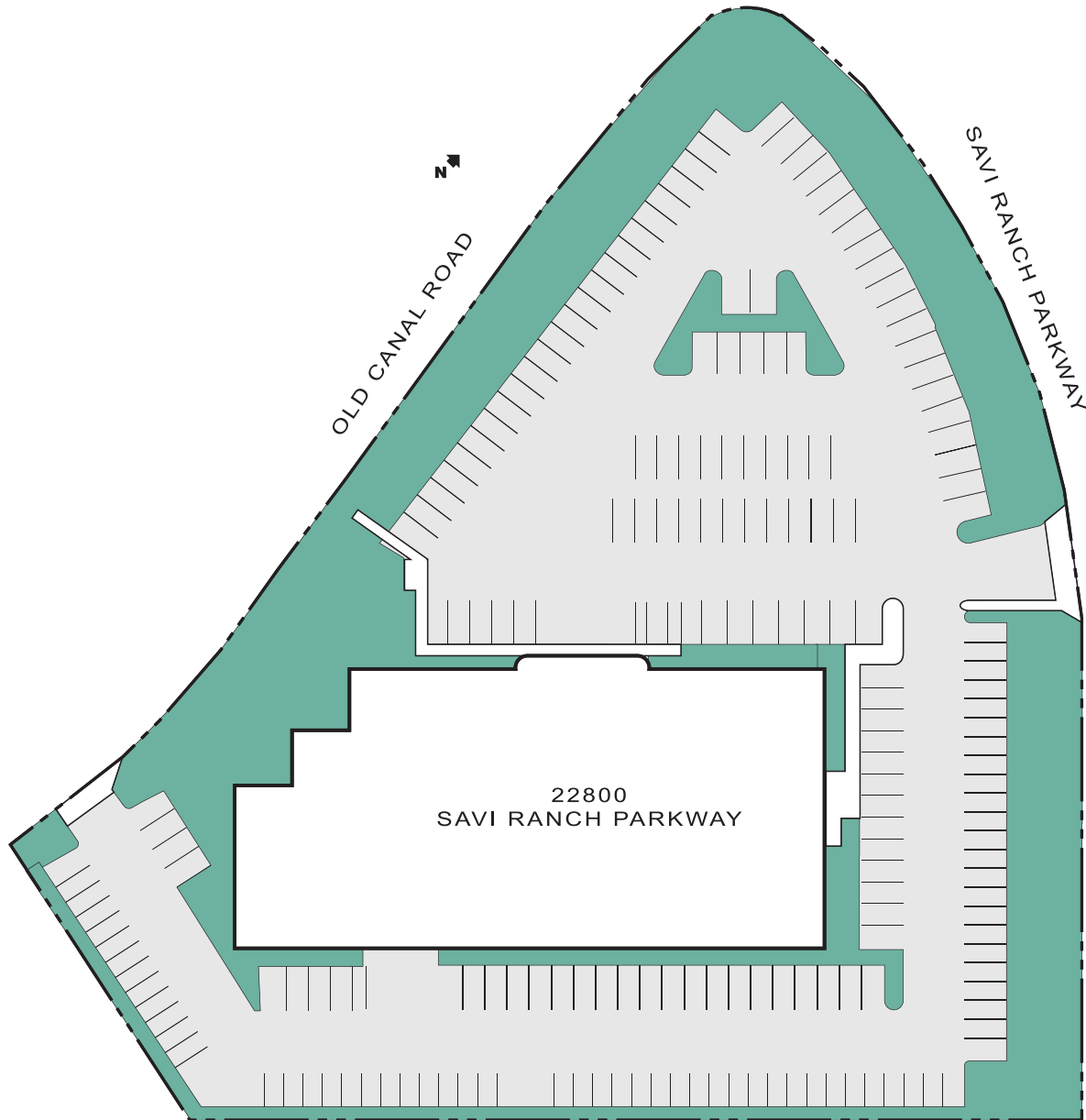
Licensed as Real Estate Salespersons by the DRE. The information contained herein has been obtained from sources we deem reliable. While we have no reason to doubt its accuracy, we do not guarantee it. ©2025 Voit Real Estate Services, Inc. All Rights Reserved. Lic #01991785.

# FOR LEASE

## KOLL SAVI BUSINESS CENTER

22800 SAVI RANCH PARKWAY, YORBA LINDA, CA

### SITE PLAN



# ***Voit***

REAL ESTATE SERVICES

**Barry Walshe**  
Vice President | Partner

(714) 935-2309  
bwalshe@voitco.com  
Lic. #01991785

2400 E. Katella Avenue, Suite 750 | Anaheim, California 92806 | (714) 978-7880 | (714) 978-9431 FAX | Lic #01991785 | [www.VoitCo.com](http://www.VoitCo.com)

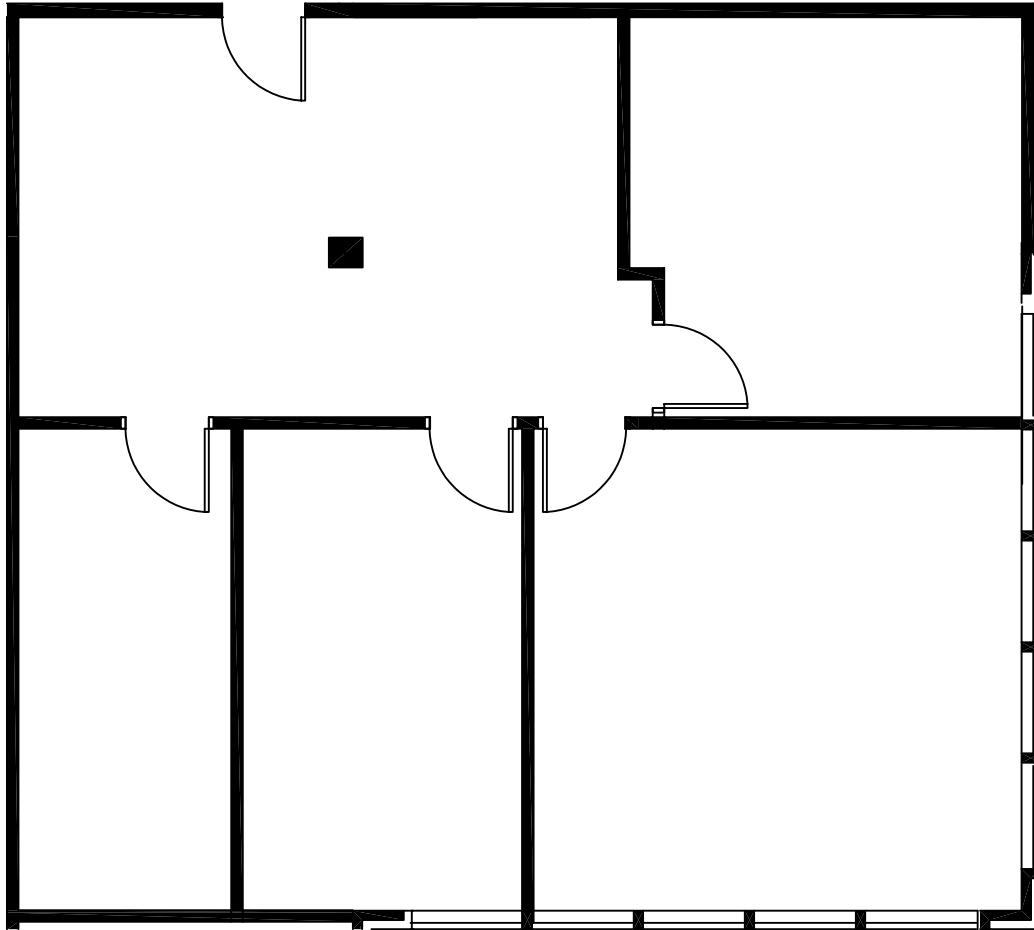
Licensed as Real Estate Salespersons by the DRE. The information contained herein has been obtained from sources we deem reliable. While we have no reason to doubt its accuracy, we do not guarantee it. ©2025 Voit Real Estate Services, Inc. All Rights Reserved. Lic #01991785.

# FOR LEASE

## KOLL SAVI BUSINESS CENTER

22800 SAVI RANCH PARKWAY, YORBA LINDA, CA

**SUITE 216 | ±1,344 SF**



***Voit***  
REAL ESTATE SERVICES

**Barry Walshe**  
Vice President | Partner  
(714) 935-2309  
bwalshe@voitco.com  
Lic. #01991785

2400 E. Katella Avenue, Suite 750 | Anaheim, California 92806 | (714) 978-7880 | (714) 978-9431 FAX | Lic #01991785 | [www.VoitCo.com](http://www.VoitCo.com)

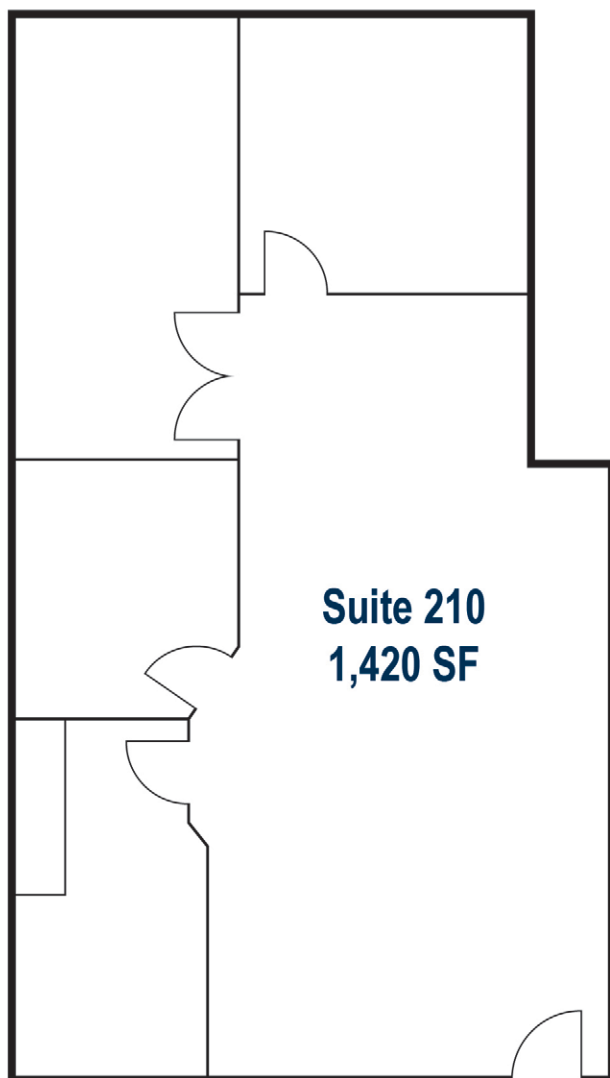
Licensed as Real Estate Salespersons by the DRE. The information contained herein has been obtained from sources we deem reliable. While we have no reason to doubt its accuracy, we do not guarantee it. ©2025 Voit Real Estate Services, Inc. All Rights Reserved. Lic #01991785.

# FOR LEASE

## KOLL SAVI BUSINESS CENTER

22800 SAVI RANCH PARKWAY, YORBA LINDA, CA

**SUITE 210 | ±1,420 SF**



# ***Voit***

REAL ESTATE SERVICES

**Barry Walshe**  
Vice President | Partner  
(714) 935-2309  
bwalshe@voitco.com  
Lic. #01991785

2400 E. Katella Avenue, Suite 750 | Anaheim, California 92806 | (714) 978-7880 | (714) 978-9431 FAX | Lic #01991785 | [www.VoitCo.com](http://www.VoitCo.com)

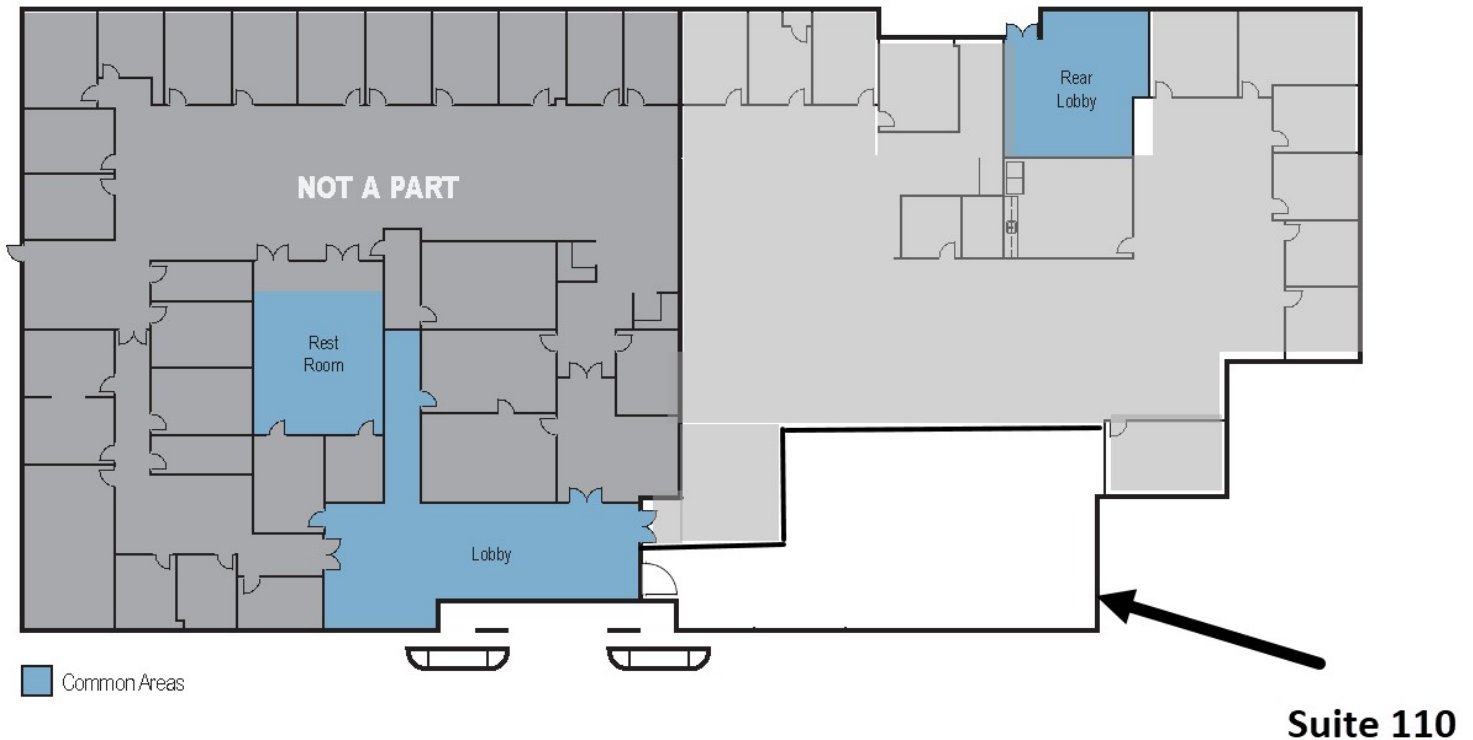
Licensed as Real Estate Salespersons by the DRE. The information contained herein has been obtained from sources we deem reliable. While we have no reason to doubt its accuracy, we do not guarantee it. ©2025 Voit Real Estate Services, Inc. All Rights Reserved. Lic #01991785.

# FOR LEASE

## KOLL SAVI BUSINESS CENTER

22800 SAVI RANCH PARKWAY, YORBA LINDA, CA

**SUITE 110 | ±12,724 SF**



***Voit***  
REAL ESTATE SERVICES

**Barry Walshe**  
Vice President | Partner  
(714) 935-2309  
bwalshe@voitco.com  
Lic. #01991785

2400 E. Katella Avenue, Suite 750 | Anaheim, California 92806 | (714) 978-7880 | (714) 978-9431 FAX | Lic #01991785 | [www.VoitCo.com](http://www.VoitCo.com)

Licensed as Real Estate Salespersons by the DRE. The information contained herein has been obtained from sources we deem reliable. While we have no reason to doubt its accuracy, we do not guarantee it. ©2025 Voit Real Estate Services, Inc. All Rights Reserved. Lic #01991785.



# FOR LEASE

## KOLL SAVI BUSINESS CENTER

22800 SAVI RANCH PARKWAY, YORBA LINDA, CA



# ***Voit***

REAL ESTATE SERVICES

**Barry Walshe**  
Vice President | Partner  
(714) 935-2309  
bwalshe@voitco.com  
Lic. #01991785

2400 E. Katella Avenue, Suite 750 | Anaheim, California 92806 | (714) 978-7880 | (714) 978-9431 FAX | Lic #01991785 | [www.VoitCo.com](http://www.VoitCo.com)

Licensed as Real Estate Salespersons by the DRE. The information contained herein has been obtained from sources we deem reliable. While we have no reason to doubt its accuracy, we do not guarantee it. ©2025 Voit Real Estate Services, Inc. All Rights Reserved. Lic #01991785.