

THE MEADOWS

ATLANTA
NORTH CENTRAL SUBMARKET

6225 Shiloh Road
Alpharetta, GA 30005



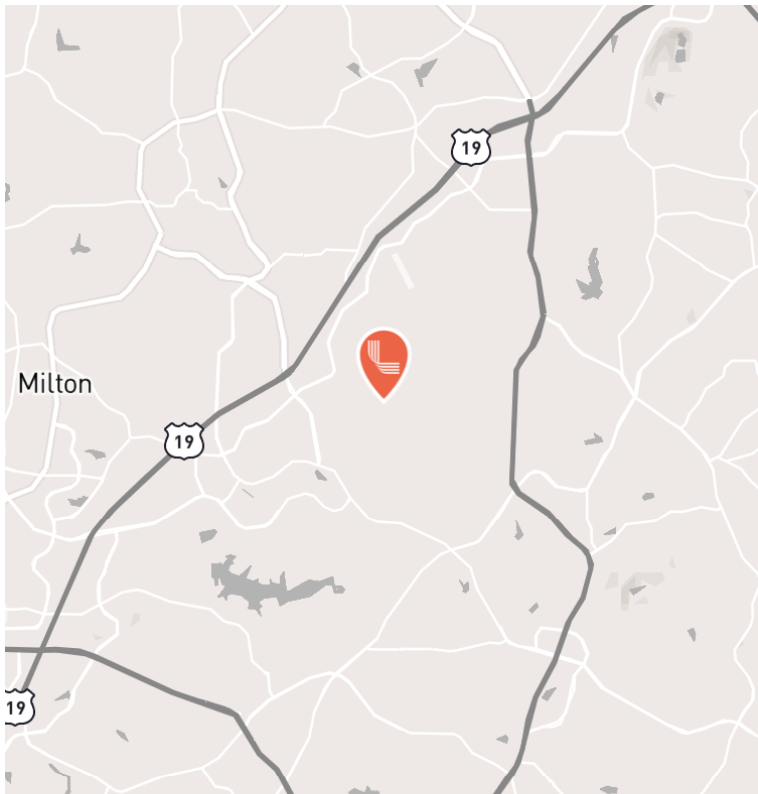
FOR LEASE

Up to 92,160 SF



LEASED BY





PROPERTY SPECIFICATIONS

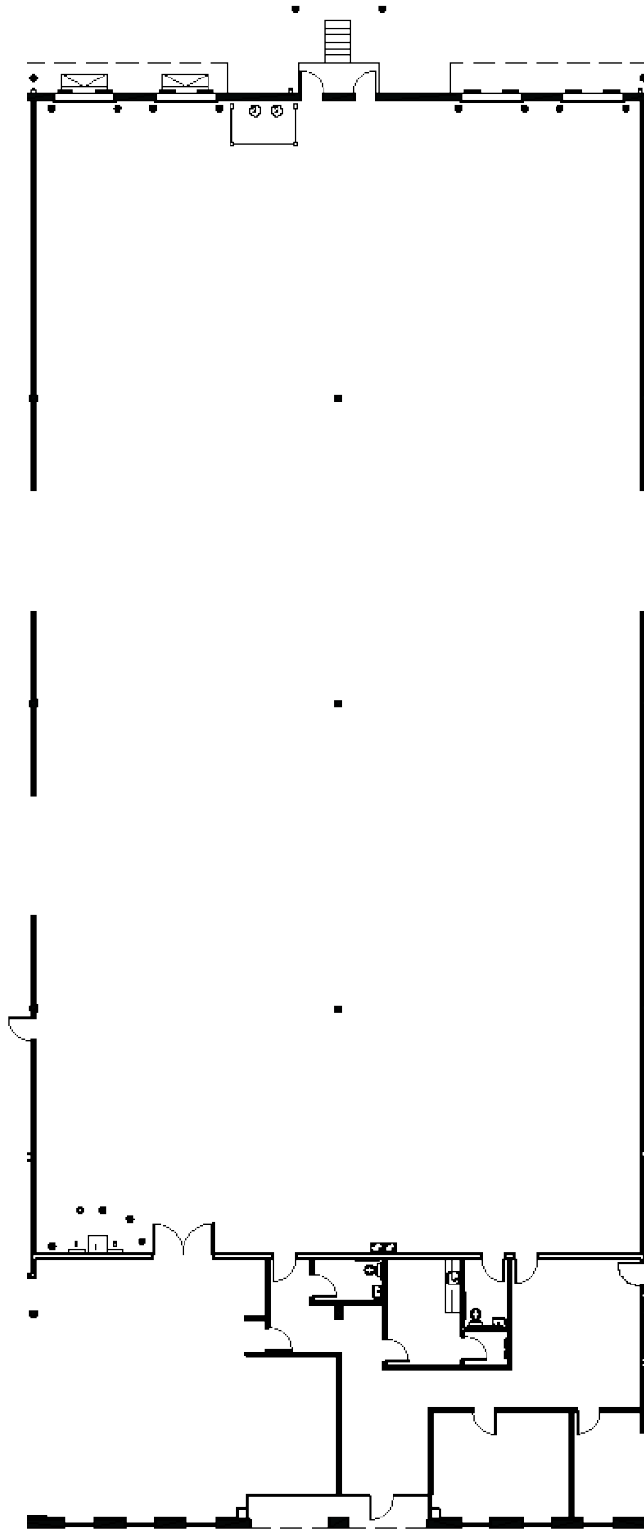
Available SF	±8,000 - 92,160 SF
Office SF	±1,600 - 23,515 SF
Ceiling Height	24'
Dock High Doors	Up to 22 DH
Drive In Doors	Up to 2 DI
Sprinkler	Non-ESFR
Availability	October 1, 2026



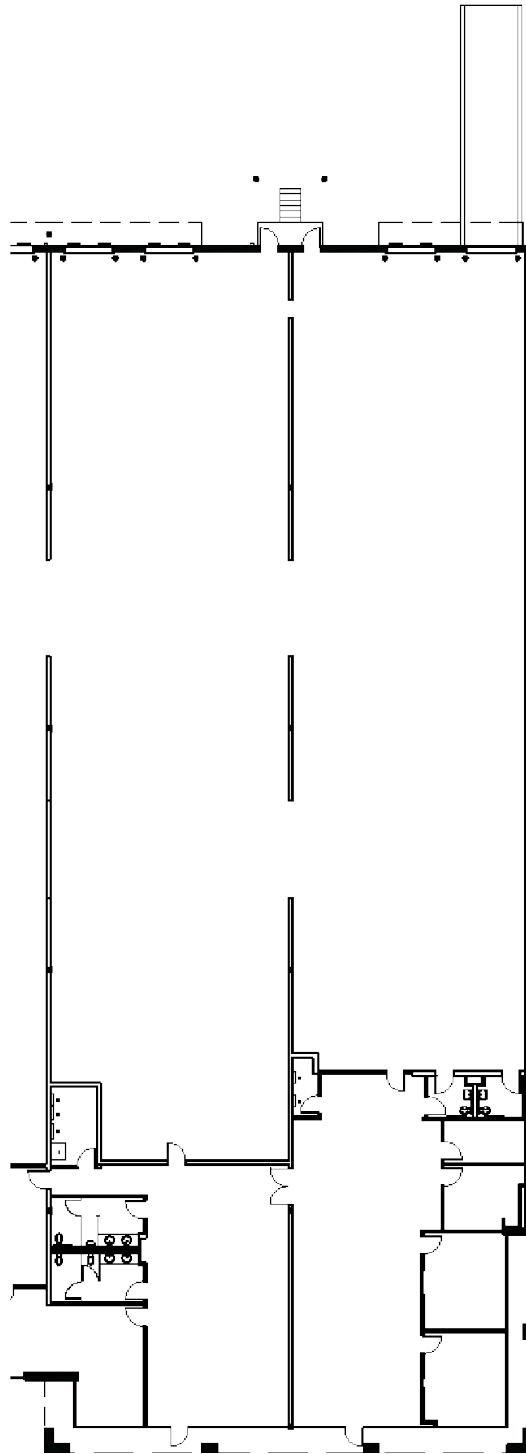
Full Building
 92,160 SF
 23,515 SF Office
 22 DH (11 EOD, 1 pit)
 2 DI



Suite A
61,118 SF
16,297 SF Office
15 DH (9 EOD, 1 pit)
1 DI
800 amps @ 277-480V



Suite B
15,006 SF
2,774 SF Office
4 DH (2 EOD)
200 amps @ 277-480V



Suite C-D
±8,000 - 16,036 SF
4,123 SF Office
3 DH
1 DI
1 @ 200 amps @ 277-480V
1 @ 100 amps @ 277-480V

CONTACT INFORMATION

6225 Shiloh Road
Alpharetta, GA 30005

Craig Viergever, SIOR

cviergever@lee-associates.com

O: (404) 442 2843 C: (404) 281 4481

Tyler Flemming

tflemming@lee-associates.com

O: (404) 442 2855 C: (404) 694 5661

Chance Taylor

ctaylor@lee-associates.com

O: (404) 442 2805 C: (404) 662 6847

This document is for informational purposes only and does not constitute an offer or acceptance of a lease. Any lease agreement must be in writing and signed by the landlord. No representations or warranties are made except as expressly stated in a signed lease. Information is provided "as is" and may be subject to errors or change without notice.



LEASED BY

