

For Lease

Owned & Managed by



Office on the water, featuring:

- Excellent waterfront views overlooking the Delaware River
- Abundant, free parking
- Scenic courtyard
- On-site property management
- Private entrances to Suites 104 & 102
- Located right next to Mercer County Waterfront Park
- Immediate accessibility to Rt. 29, I-195 and I-295
- Easy access to Trenton
- Short walk from Light Rail Station

**YOUR
LOGO
HERE**



30,394 RSF

400 Riverview Plz
Trenton, NJ

First Floor: 1,563 RSF available
Second Floor: 7,316 - 8,100 RSF available

Thomas Romano
+1 609 658 1589

thomas.romano@am.jll.com





Waterfront views over the Delaware River



Ample conference space



You **don't** have to be on the Hudson for waterfront views



Interior Offices

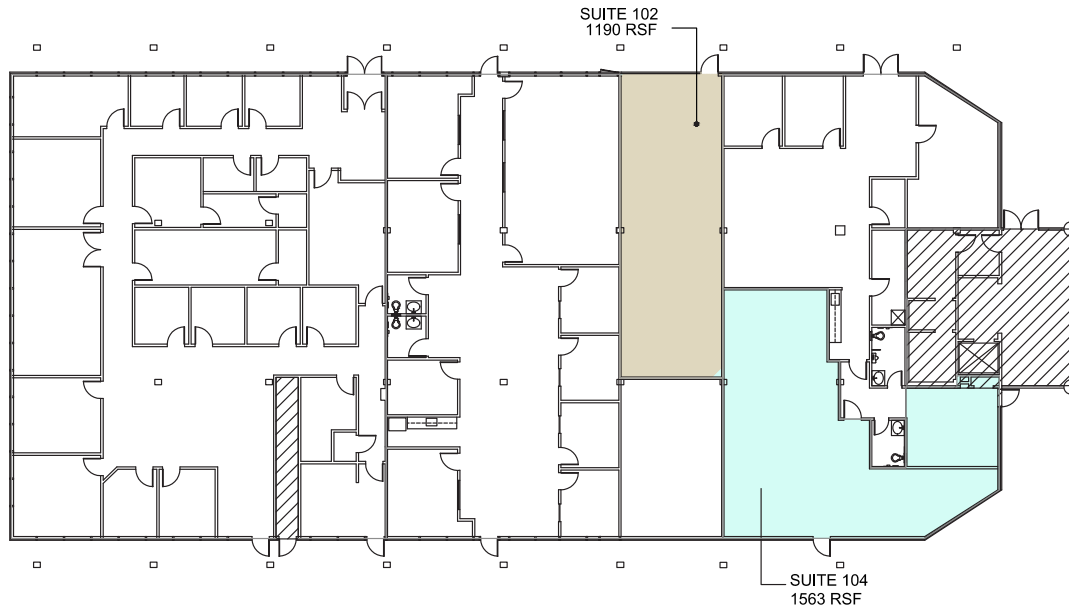


Reception Area

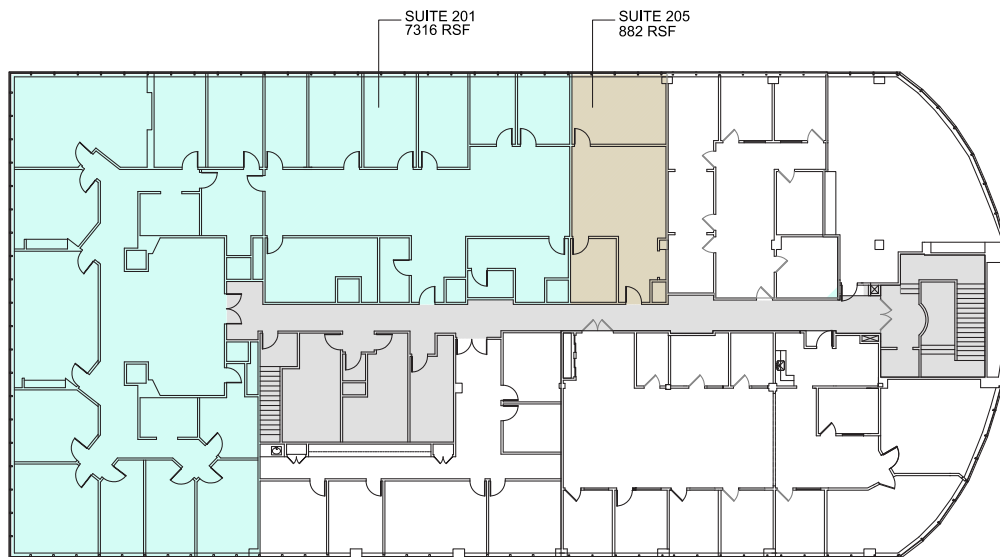


Corner office views

FIRST FLOOR - Suite 102 (1,190 SF) and Suite 104 (1,563 RSF)



SECOND FLOOR - Suite 201 (7,316 -8,100 RSF)



EXCLUSIVE LEASING AGENTS:

Thomas Romano
+1 609 658 1589
thomas.romano@am.jll.com

TJ Romano
+1 609 658 7266
tj.romano@am.jll.com



©2020 Jones Lang LaSalle IP, Inc. All rights reserved. All information contained herein is from sources deemed reliable; however, no representation is made as to the accuracy of the information furnished herein and same is submitted subject to errors, omissions, change of prices, rental or other conditions, prior sale, lease, sublease, and/or withdrawal without notice.