

Cathedral District Business Center

823 South Detroit Avenue
Tulsa, OK 74120
www.cbre.com

Cathedral District Office Portfolio



Property Features

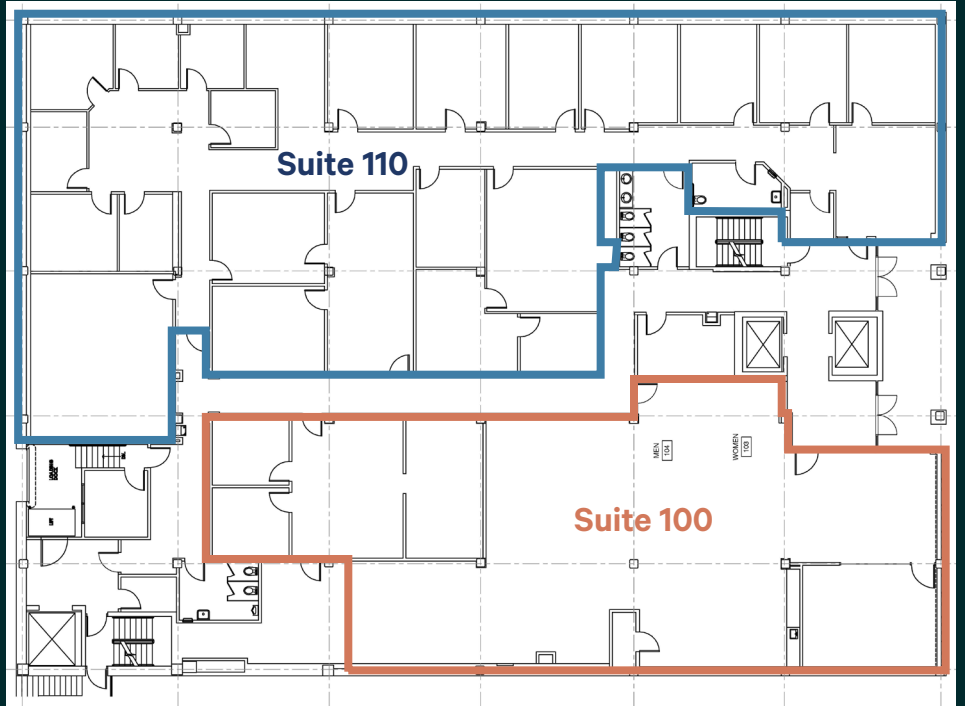
- + ±53,217 RSF Available*
 - Suite 100 - ±3,968 RSF
 - Suite 110 - ±7,307 RSF
 - Suite 200 - ±13,980 RSF
 - Suite 300 - ±13,980 RSF
 - Suite 400 - ±13,982 RSF has creative open plan with concrete ceiling
- + Local Ownership
- + Building Signage
- + New Exterior and Lobby Renovation
- + Systems Furniture in Place
- + Covered and Surface Parking
- + Basement Storage and Meeting Areas
- + Fiber Available: COX, AT&T, VERIZON

*Source: Owner

1st Floor



Lobby



Suite 110

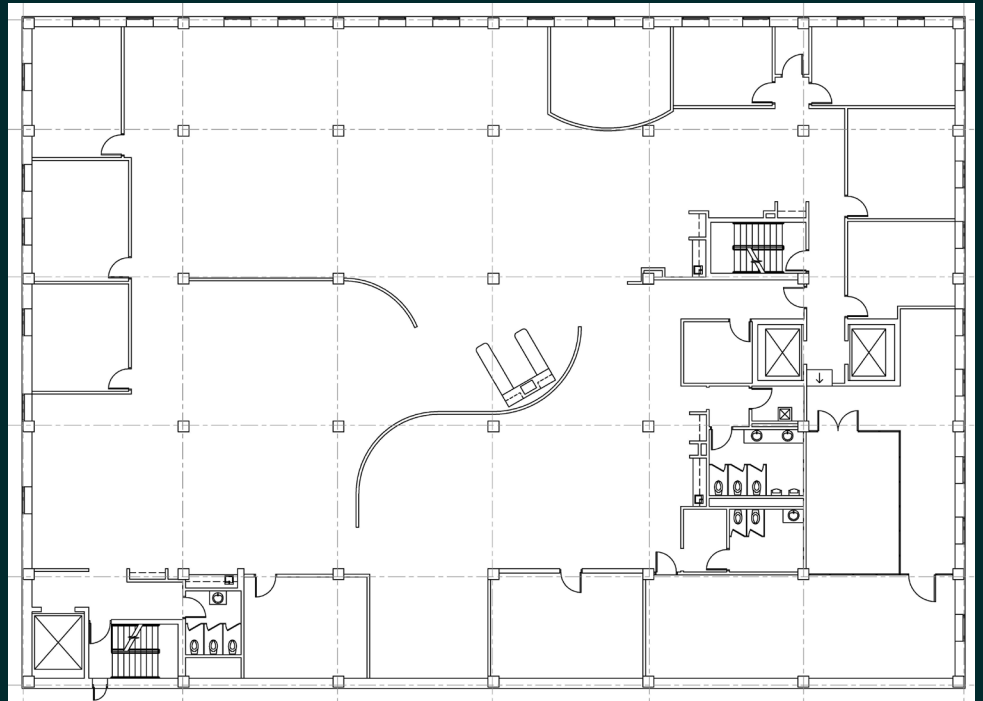


Suite 200



Suite 200

2nd Floor



For Lease

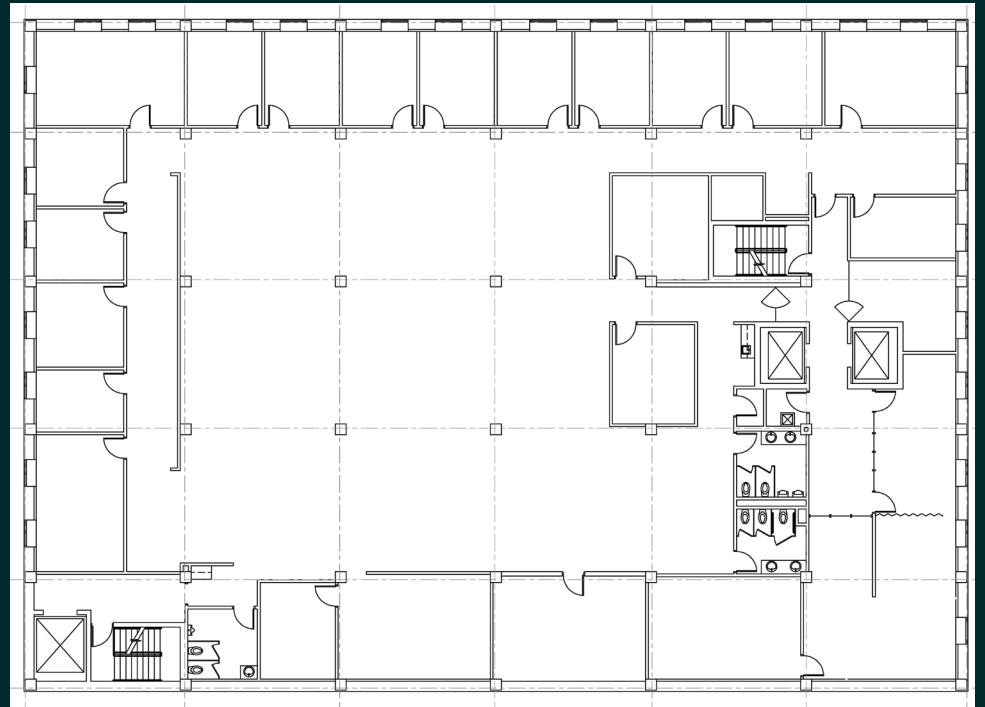
3rd Floor



Suite 300



Suite 300



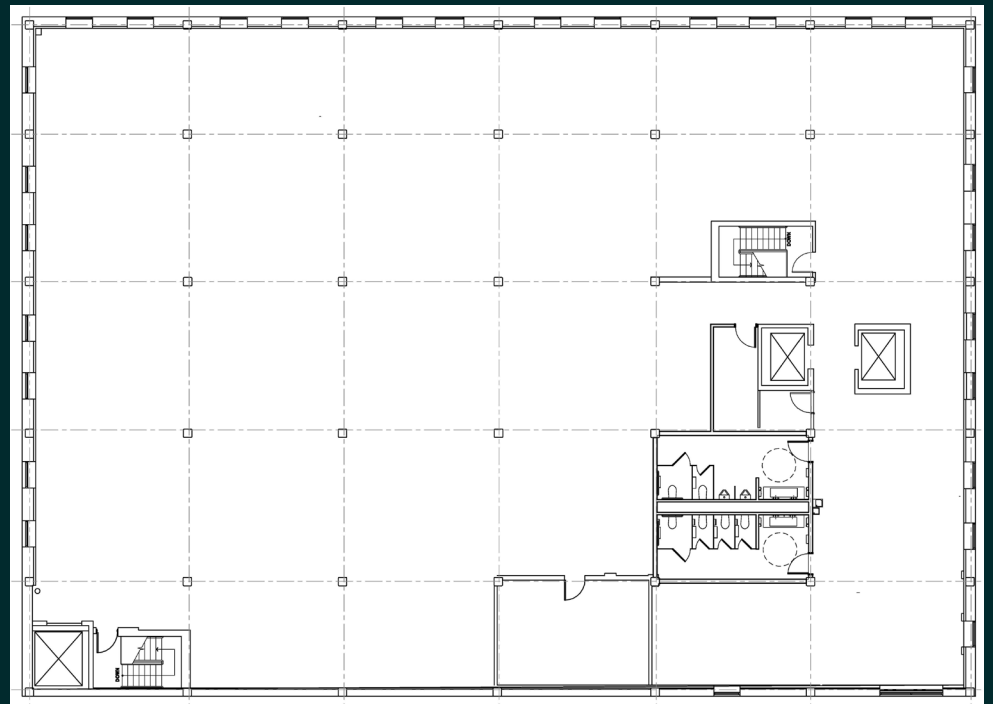
4th Floor



Suite 400



Restroom - Suite 400



DOWNTOWN
TULSA
AMENITIES



Contact Us

Dylan Seibert, SIOR, CCIM
Senior Associate
+1 918 392 7253
dylan.seibert@cbre.com



© 2026 CBRE, Inc. All rights reserved. This information has been obtained from sources believed reliable, but has not been verified for accuracy or completeness. You should conduct a careful, independent investigation of the property and verify all information. Any reliance on this information is solely at your own risk. CBRE and the CBRE logo are service marks of CBRE, Inc. All other marks displayed on this document are the property of their respective owners, and the use of such logos does not imply any affiliation with or endorsement of CBRE. Photos herein are the property of their respective owners. Use of these images without the express written consent of the owner is prohibited. Licensees of CBRE are participants in the ownership of this property.

