

RENAISSANCE PLAZA

RETAIL & OFFICE SPACE AVAILABLE



Property Overview

New 20,000 +/- SF retail/office building in the heart of Morrisville Borough, with 50+ Parking Spaces. First floor has 1,700-3,800 +/- SF of retail space, 2nd floor has 2,200 - 9,000 +/- SF of Office space, formerly occupied by an engineering firm. Close proximity to all major thoroughfares.

Property Features

- Beautiful Building
- Plenty of Parking
- Great Downtown Location
- High Traffic Counts (~15,000 VPD)
- Walking distance to shops & restaurants

Base Rent: \$12/SF

Address: 54-60 E Bridge St, Morrisville, PA 19067

Building: 20,000 +/- SF

Built: 2008

Municipality: Morrisville Borough

County: Bucks

Private Parking Spaces: 50+

ERA CONTINENTAL REALTY

700 W Germantown Pk
East Norriton, PA 19403

610-630-3700

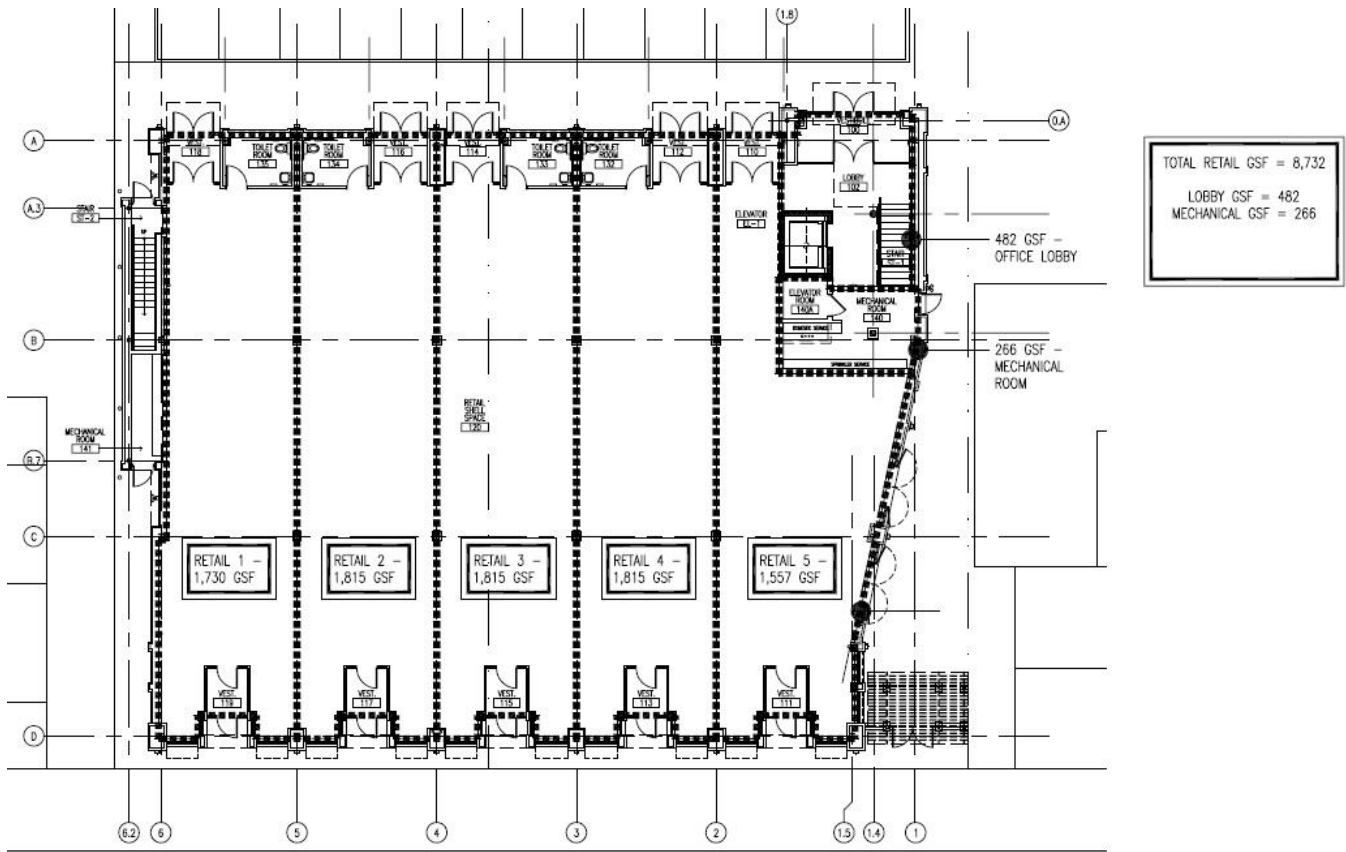
www.continentalcommerical.info



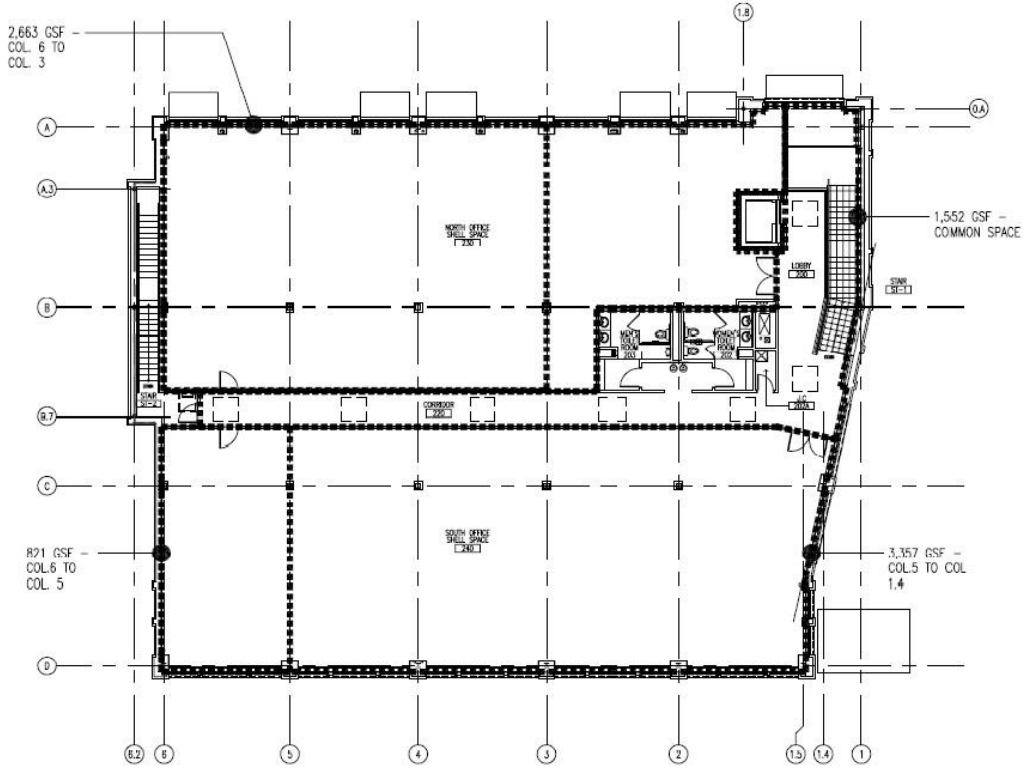




1st Floor



2nd Floor



TOTAL OFFICE GSF = 8,023
NORTH SIDE GSF = 3,845
SOUTH SIDE GSF = 4,178
COMMON SPACE GSF = 1,552